

SENTRON, 3LD switch disconnecter, EMERGENCY-STOP switch, 3-pole, Iu:16 A, Operational power / at AC-23 A at 400 V: 7,5 kW, front- mounted, knob-operated mechanism, red/yellow, 4-hole mounting of the handle



Model	
product brandname	SENTRON
Product designation	3LD switch disconnecter
Design of the product	EMERGENCY-STOP switch
Design of the operating mechanism	selector switch
Type of the driving mechanism / motor drive	No
General technical data	
Number of poles	3
Type of device	fixed mounting
Operating frequency / maximum	50 1/h
Voltage	
Insulation voltage / rated value	690 V
Surge voltage resistance / rated value	6 kV
Protection class	
Protection class IP	IP65
Protection class IP / on the front	IP65
Dissipation	

Power loss [W]	
<ul style="list-style-type: none"> for rated value of the current / at AC / in hot operating state / per pole 	0.5 W

Electricity

Continuous current / rated value	16 A
Short-time current resistance (I _{cw}) / at 690 V / limited to 1 s / rated value	340 A

Main circuit

Operating frequency	
<ul style="list-style-type: none"> initial value 	50 Hz
<ul style="list-style-type: none"> Full-scale value 	60 Hz
Operating power	
<ul style="list-style-type: none"> at AC-23 A / at 400 V / rated value 	7.5 kW
<ul style="list-style-type: none"> at AC-23 A / at 690 V / rated value 	7.5 kW
<ul style="list-style-type: none"> at AC-3 / at 400 V / rated value 	5.5 kW
<ul style="list-style-type: none"> at AC-3 / at 690 V / rated value 	5.5 kW
Operating voltage	
<ul style="list-style-type: none"> at AC / at 50/60 Hz / rated value 	690 V

Auxiliary circuit

Operating voltage / of auxiliary contacts / at AC / maximum	500 V
Continuous current / of the auxiliary contact / rated value	10 A
Insulation voltage / of the auxiliary switch / rated value	500 V

Suitability

Suitability for use	
<ul style="list-style-type: none"> Main switch 	Yes
<ul style="list-style-type: none"> switch disconnecter 	Yes
<ul style="list-style-type: none"> EMERGENCY OFF switch 	Yes
<ul style="list-style-type: none"> safety switch 	Yes
<ul style="list-style-type: none"> maintenance/repair switch 	Yes

Product details

Product feature / interlock	Yes
Product extension / optional	
<ul style="list-style-type: none"> motor drive 	No
<ul style="list-style-type: none"> Voltage trigger 	No

Connections

Type of electrical connection	
<ul style="list-style-type: none"> for main current circuit 	Box terminal
<ul style="list-style-type: none"> for auxiliary contacts 	connection terminals

Requirements

Design of the fuse link

- | | |
|---|------------------|
| <ul style="list-style-type: none"> • for short-circuit protection of the main circuit / required | fuse gL/gG: 20 A |
| <ul style="list-style-type: none"> • for short-circuit protection of the auxiliary switch / required | fuse gL/gG: 10 A |

Mechanical Design

Height	66 mm
Width	49 mm
Depth	89.5 mm
Mounting type	Built-in unit fixed-mounted version
Mounting type	
<ul style="list-style-type: none"> • front mounting with 4-hole attachment 	Yes
<ul style="list-style-type: none"> • front mounting with central attachment 	No
<ul style="list-style-type: none"> • rail mounting 	No
Net weight	187 g

Environmental conditions

Ambient temperature	
<ul style="list-style-type: none"> • during operation / minimum 	-25 °C
<ul style="list-style-type: none"> • during operation / maximum 	55 °C

Certificates

Equipment marking	
<ul style="list-style-type: none"> • acc. to DIN EN 61346-2 	S
<ul style="list-style-type: none"> • acc. to DIN EN 81346-2 	SF

General Product Approval	Declaration of Conformity
--------------------------	---------------------------



[sonstig](#)



Test Certificates	Shipping Approval	other
-------------------	-------------------	-------

[spezielle Prüfbescheinigungen](#)



[Umweltbestätigung](#)

[sonstig](#)

Further information

Information- and Downloadcenter (Catalogs, Brochures,...)
<http://www.siemens.com/lowvoltage/catalogs>

Industry Mall (Online ordering system)

<https://mall.industry.siemens.com/mall/en/en/Catalog/product?mlfb=3LD2022-0TK13>

Service&Support (Manuals, Certificates, Characteristics, FAQs,...)

<http://support.automation.siemens.com/WW/view/en/3LD2022-0TK13/all>

Image database (product images, 2D dimension drawings, 3D models, device circuit diagrams, ...)

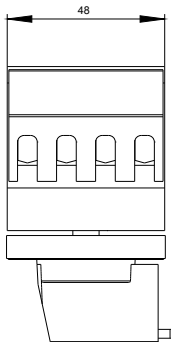
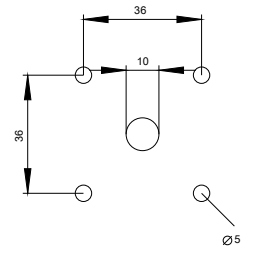
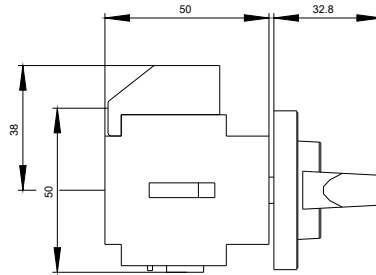
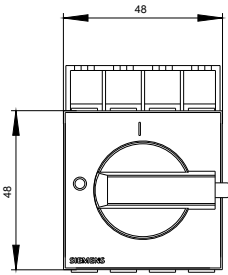
http://www.automation.siemens.com/bilddb/cax_en.aspx?mlfb=3LD2022-0TK13

CAX-Online-Generator

<http://www.siemens.com/cax>

Tender specifications

<http://www.siemens.com/specifications>



-Q1

