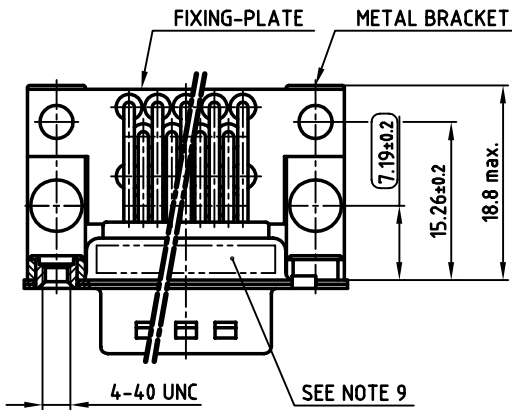
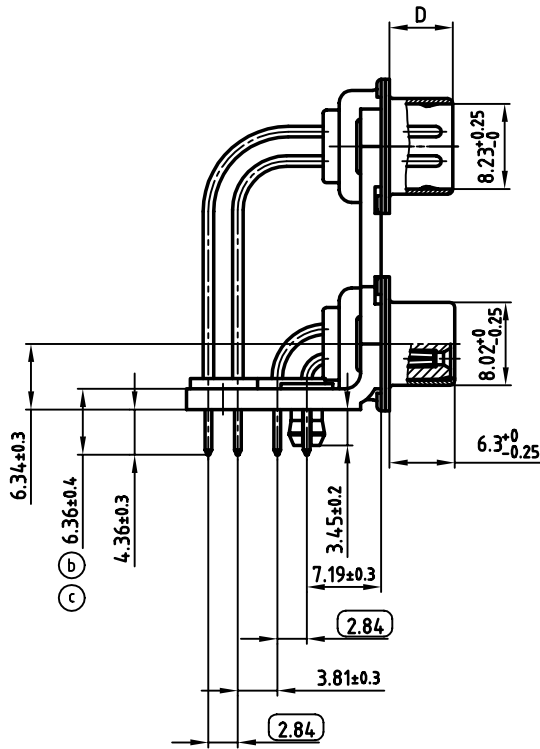
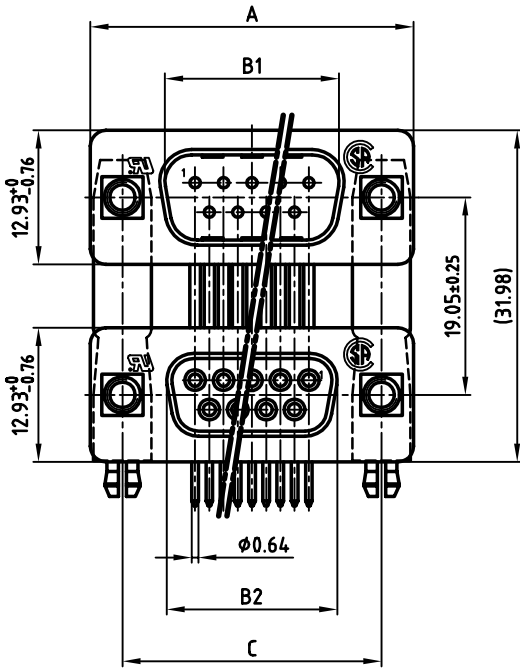


used for: D-SUB Dual Port

| POS. | A _{-0.76} | B1 ^{+0.25} | B2 _{-0.25} | C | D _{-0.3} |
|------|--------------------|---------------------|---------------------|---|-------------------|
| 2x 9 | 31.19 | 16.79 | 16.46 | 25.00 ^{+0.12} _{-0.13} | 6.12 |
| 2x15 | 39.52 | 25.12 | 24.79 | 33.30 ^{+0.15} _{-0.1} | 6.12 |
| 2x25 | 53.42 | 38.84 | 38.50 | 47.04 ^{+0.13} | 5.99 |
| 2x37 | 69.70 | 55.30 | 54.96 | 63.50 ^{+0.13} | 5.99 |

| PLATING | 2 x 9pos. | 2 x 15pos. | 2 x 25pos. | 2 x 37pos. |
|---|------------|------------|------------|------------|
| 8µ" HARD GOLD OVER min. 50µ" NICKEL | 163A19529X | 163A19539X | 163A19549X | 163A19559X |
| 30µ" HARD GOLD OVER min. 50µ" NICKEL | 163C19529X | 163C19539X | 163C19549X | 163C19559X |

(b)



NOTES:

- METALSHELLS: STEEL; min. 320µ" TIN
- INSULATORS: PBT GF UL 94 V-0, BLACK
- CONTACTS: COPPER ALLOY
- PLATING: SEE TABLE
- METAL BRACKET: STEEL; min. 320µ" TIN over 80µ" NICKEL
- THREADED INSERT: COPPER ALLOY; min. 200µ" TIN over 80µ" NICKEL
- FIXING-PLATE: PBT GF UL 94 V-0, BLACK
- P.C.B. HOLE DRILLINGS ON SHEET 2 + 3
- MAXIMUM TORQUE VALUE FOR THREAD: 6" LBS
- CONNECTOR IS PART MARKED: PART-NO. CONEC Y/WW
- = CRITICAL DIMENSION

Directive 2002/95/EC
"RoHS"
Compliant

APPROVAL # FREIGABE # DEBLOCAGE # AUTORIZACION # APPROVAL

CUSTOMER APPROVAL DATE:

NAME: TITLE:

COMPANY NAME:

APPROVAL # FREIGABE # DEBLOCAGE # AUTORIZACION # APPROVAL

THIS DRAWING MAY NOT BE COPIED OR REPRODUCED IN ANY WAY, AND MAY NOT BE PASSED ON TO A THIRD PARTY, WITHOUT WRITTEN PERMISSION. OWNERSHIP AND COPYRIGHT OF CONEC Gmbh DO NOT ALTER CAD DRAWING BY HAND

| rev. | description | date | name |
|-------|-------------|------------|--------|
| 1 x c | Ä 1919 | 09.01.2004 | Lehmen |
| 3 x b | Ä 1905 | 19.12.2003 | Lehmen |

| tolerance | dim. in mm |
|-----------|---------------------|
| 2000 | date |
| drawn | 31.01. Barcinski |
| appd. | 31.01. Mickenbecker |
| norm | DIN 41652 |
| d-old | |

CONEC

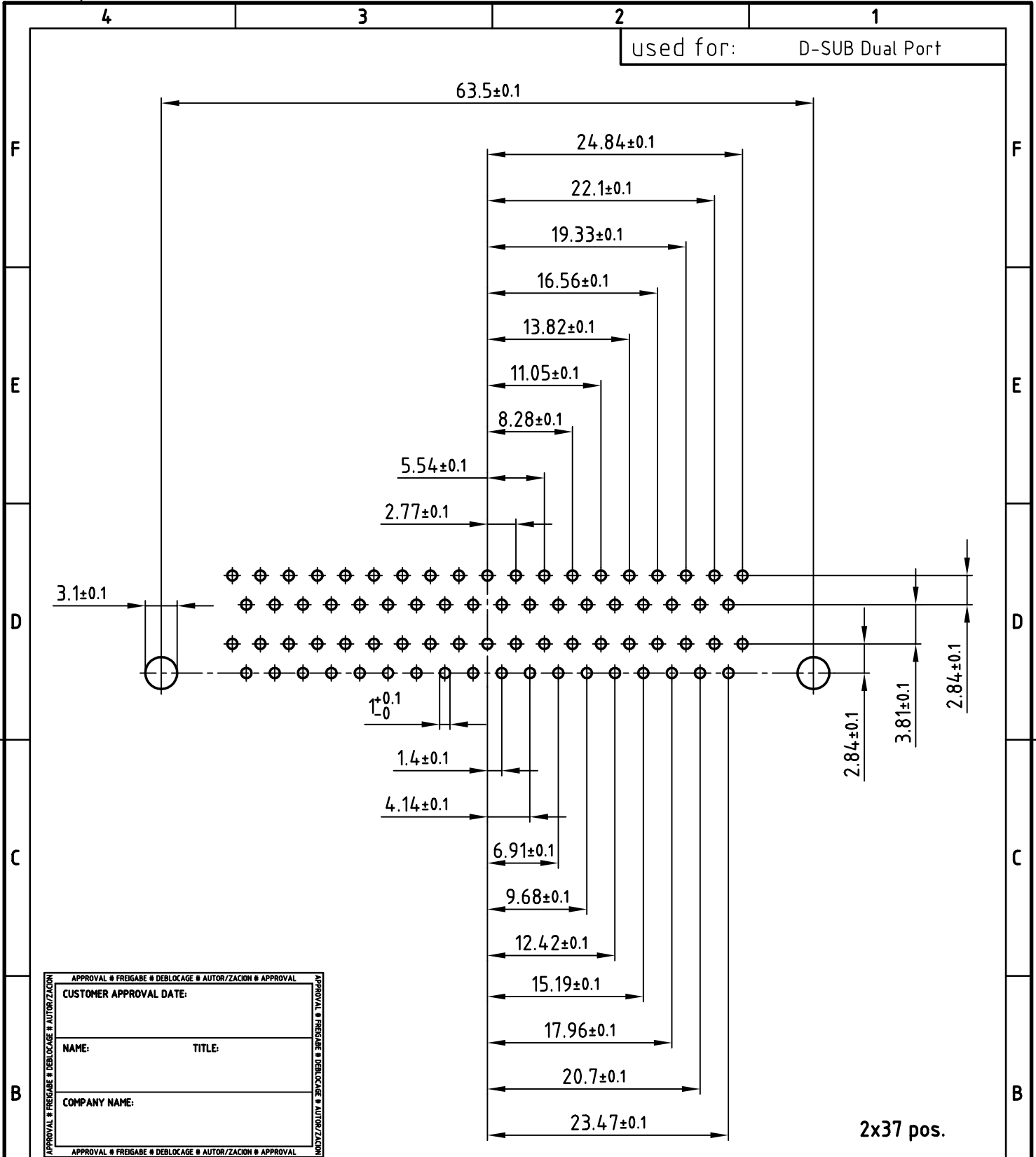
scale: 2:1

material: SEE NOTES

title: **DUAL PORT 19.05mm**
MALE / FEMALE 2x9pos. - 2x37pos.
with threaded insert and clip

dwg no: AutoCAD 2000 DIN-A
3 sh:1/3

part no: SEE TABLE



| | |
|---|--------|
| APPROVAL # FREIGABE # DEBLOCAGE # AUTORIZACION # APPROVAL | |
| CUSTOMER APPROVAL DATE: | |
| NAME: | TITLE: |
| COMPANY NAME: | |
| APPROVAL # FREIGABE # DEBLOCAGE # AUTORIZACION # APPROVAL | |

THIS DRAWING MAY NOT BE COPIED OR REPRODUCED IN ANY WAY, AND MAY NOT BE PASSED ON TO A THIRD PARTY WITHOUT WRITTEN PERMISSION.
 OWNERSHIP AND COPYRIGHT OF CONEC GmbH
 DO NOT ALTER CAD DRAWING BY HAND

| | | |
|-----------|-------------|-------------------|
| tolerance | dim. in mm | |
| 2000 | date | name |
| drawn | 31.01. | Barcinski |
| appd. | 31.01. | Mickenbecker |
| norm | DIN 41652 | |
| d-old | | |
| 1 x b | Ä 1905 | 19.12.2003 Lehmen |
| rev. | description | date name |



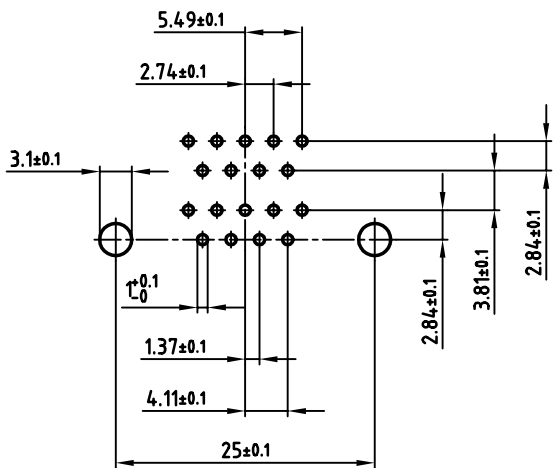
| | | |
|-----------|--|--------|
| scale: | 2:1 | |
| material: | SEE SHEET 1 | |
| title: | ⓑ P.C.B. HOLE DRILLINGS DUAL PORT 19.05mm MALE / FEMALE with threaded insert and clip | |
| dwg no: | AutoCAD 2000 | DIN-A |
| | 16K11MFA | 4 |
| | | sh:3/3 |
| part no: | SEE SHEET 1 | |

A
B
C
D
E
F

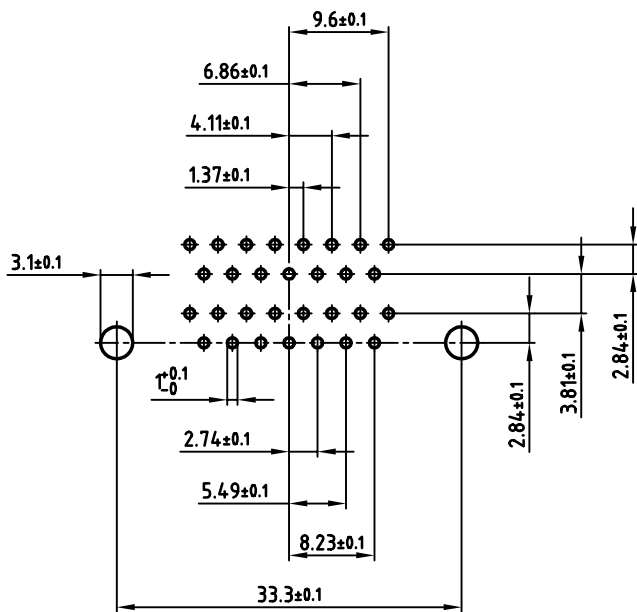
A
B
C
D
E
F

4 3 2 1

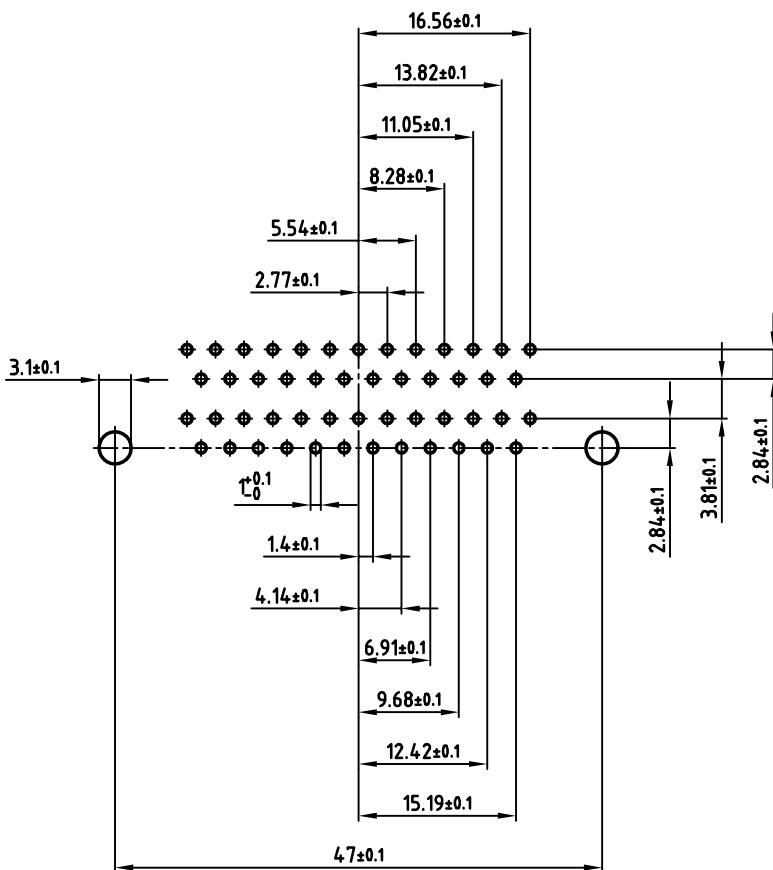
used for: D-SUB Dual Port



2x9 pos.



2x15 pos.



2x25 pos.

APPROVAL # FREIGABE # DEBLOCAGE # AUTOR/ZACON # APPROVAL

CUSTOMER APPROVAL DATE:

NAME: TITLE:

COMPANY NAME:

APPROVAL # FREIGABE # DEBLOCAGE # AUTOR/ZACON # APPROVAL

THIS DRAWING MAY NOT BE COPIED OR REPRODUCED IN ANY WAY, AND MAY NOT BE PASSED ON TO A THIRD PARTY, WITHOUT WRITTEN PERMISSION. OWNERSHIP AND COPYRIGHT OF CONEC GmbH DO NOT ALTER CAD DRAWING BY HAND

| rev. | description | date | name |
|-------|-------------|------------|--------|
| 1 x b | Ä 1905 | 19.12.2003 | Lehmen |

| | |
|-----------|---------------------|
| tolerance | dim. in mm |
| 2000 | date |
| drawn | 31.01. Barcinski |
| appd. | 31.01. Mickenbecker |
| norm | DIN 41652 |
| d-old | |

scale: 2:1

material: SEE SHEET 1

title: **P.C.B. HOLE DRILLINGS**
DUAL PORT 19.05mm MALE / FEMALE
with threaded insert and clip

dwg no: AutoCAD 2000 DIN-A
3 sh:2/3

part no: SEE SHEET 1

