



PRODUKTINFORMATION

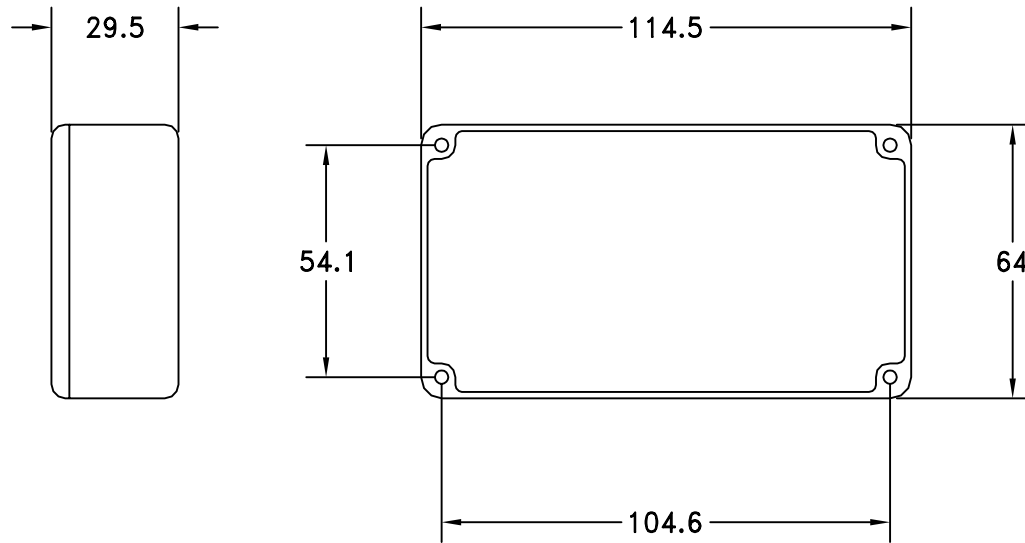
Vi reserverar oss mot fel samt förbehåller oss rätten till ändringar utan föregående meddelande

ELFA artikelnr

50-024-15 Skärmbox 114x64x30 mm 461-0020

50-025-22 Skärmbox 114x64x30 mm 459-0020

Dimensions



TAPER 1.5° PER SIDE
BASE TO LID

Description

A range of diecast boxes in various sizes, manufactured in a robust aluminium alloy. These lightweight enclosures provide excellent screening against EMI and RFI and are therefore ideal housings for electronic components and circuits. The close fitting lid is secured using four countersunk screws. The box comes in a plain finish.

Features

MATERIAL

BOX & LID : Aluminium Alloy LM24

SCREWS : Mild Steel M3.5x9

WALL THICKNESS : 1.5mm

CONVERTED FROM COREL. PS0255 ISS3

ALL DIMENSIONS IN MM / ANGLES IN DECIMAL DEGREES

DrgNo 459-0020-GS

TITLE DIECAST BOX - 'B' SIZE



ISSUE 4

GENERAL SPECIFICATION FOR 459-0020

CUSTOMER
FILTER REF

Sheet 1 of 1 | Aprvd Date 04/04/02 | Aprvd By MC | Drwn by BS | SCALE NTS | CNN--- | Location N: \LONDON\GS\LGS00020

©DELTRON EMCON LTD, ROXBURGH HOUSE, FOXHILLS INDUSTRIAL PARK, SCUNTHORPE, NORTH LINCOLNSHIRE, DN15 8QJ TEL +44 1724 281770 F +44 1724 270230