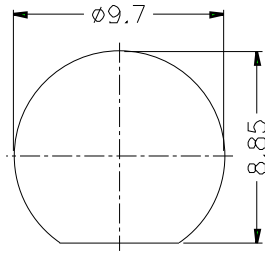
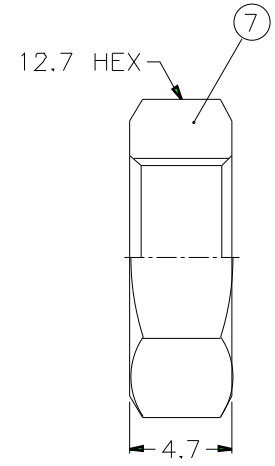
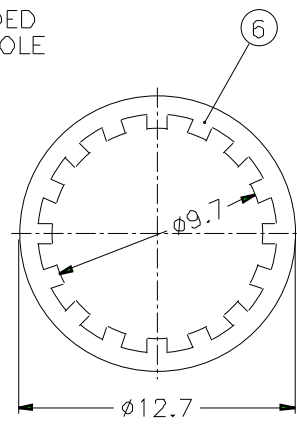
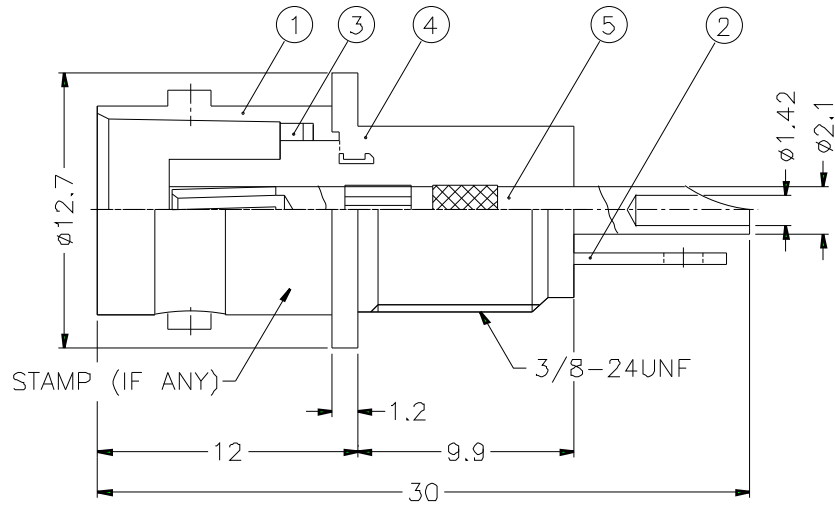


REVISIONS		
ISS	ZONE	DESCRIPTION\PER REQUEST\DATE



RECOMMENDED MOUNTING HOLE



1. MAX. PANEL THICKNESS=3.2mm

- NOTES: FINISH (PLATING THICKNESS IN MICRO-INCHES)
- BRASS PER QQ-B-626
 - BRASS PER QQ-B-613
 - NICKEL PL. 100 MIN. THICK OVER COPPER STRIKE
 - PHOSPHOR BRONZE PER QQ-B-750
 - GOLD PL. 3 MIN. THICK OVER NICKEL PL. 100 MIN. THICK OVER COPPER STRIKE
 - BRIGHT TIN PL. 200 MIN. THICK OVER NICKEL PL. 50 MIN. THICK OVER COPPER PL. 100 MIN. THICK

RECOMMENDED TORQUE: A MAXIMUM TORQUE OF 12 INCH-LBS MAY BE APPLIED ON HEX NUT WHEN MOUNTING CONNECTOR IN PANEL.

NO.	DESCRIPTION	MATERIAL	FINISH	Q'TY	DRAWING NO.
7	HEX NUT	NOTE 1	NOTE 3	1	HN127-3/8-24X47
6	LOCK WASHER	NOTE 2	NOTE 3	1	LW-127/97X05
5	CONTACT PIN	NOTE 4	NOTE 5	1	B7300-5
4	INSULADR	NYLON	WHITE	1	B6651B1-1-50-E
3	LOCK RING	NOTE 2	NOTE 3	1	
2	BRAID GROUNDING	NOTE 2	NOTE 6	1	
1	BODY	NOTE 1	NOTE 3	1	

DIMENSIONS ARE IN MILLIMETERS				PART NO.	
UNLESS OTHERWISE SPECIFIED TOLERANCES 0.5-6 = ±0.2 6-30 = ±0.4 30-120 = ±0.6 120-315 = ±1 315-1000 = ±1.6 1000-2000 = ±2.4				B6651B1-NNYL3G-50	
				APPROVED	DATE
				10-11-01'	
				CHECKED	DATE
10-11-01'					
DRAWN	DATE				
10-11-01'					
SCALE	3/1	ISSUE	A	FILE NO	

Amphenol		TITLE	BNC BULKHEAD RECEPT. ISOLATED JACK
		DRAWING NO.	KJ-B6651B1-NNYL3G-50
ITEM NO.			