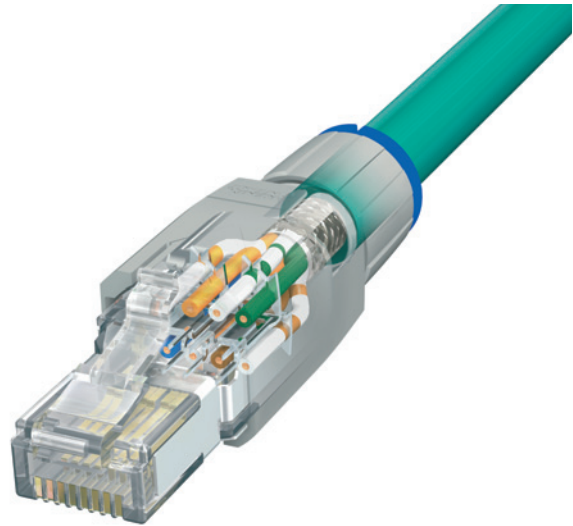


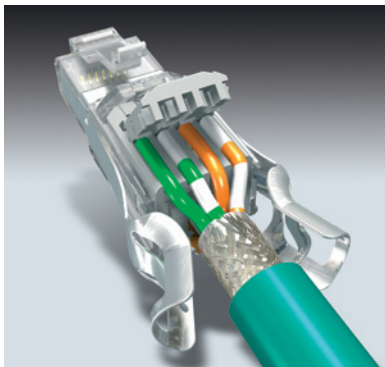
VARIOSUB RJ45 QUICKON IP20 CAT5e connector, with fast connection system

Description

The VARIOSUB RJ45 QUICKON in IP20 protection is the first industrial 8-pos. RJ45 connector that utilizes the fast connection technology. It fulfills the requirements of IAONA for use in light duty areas and is suitable as a CAT5e component for Fast Ethernet transmission at 100 mbps. The connection system can be operated without additional tools and can accommodate solid and stranded wires of AWG 26-22.



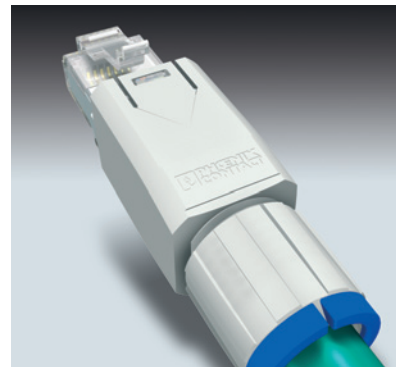
Easy assembly:



Insert the conductor



Close the locking mechanism



Mount the housing – Finished

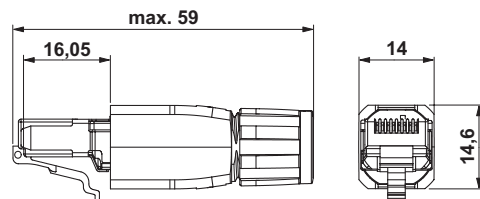
RJ45 connector

Technical data (CAT5e)

Basic standard IEC 60603-7 RJ45, Category 5;
 CD ISO/IEC 11801:2002, EN 50173:2002,
 EIA/TIA 568B:2001



Description	Type	Order No.	Pcs./Pkt.
RJ45 connector, IP20, with QUICKON fast connection system, CAT5e, 8-pos., for 1 to 7-wire cores AWG 26-22, for cable diameters of 4.5 - 8.0 mm	VS-08-RJ45-5-Q/IP20	1656725	1
Coding set, for color coding of the RJ45 QUICKON connector, consisting of 80 color rings, 10 rings in each color: white, blue, red, green, yellow, violet, brown, gray	VS-08-RJ45-Q-COD-SET	1656893	1
Mechanical data			
Number of pos.		8	
Degree of protection		IP20	
Inflammability class in acc. with UL 94		V0	
Insertion/withdrawal cycles		>1000	
Material			
Contact		CuSn6 (bronze)	
Contact surface		>1.2 µm Au on 1.2 µm Ni	
Surface IDC		approx. 5 µm tin-plated (lead-free)	
Contact carrier		PC	
Housing		PA	
Shielding		CuZn (brass), 3 µm hot-dip galvanized	
Temperature ranges			
Storage temperature [°C]		-40 ... +70	
Operating temperature [°C]		-20 ... +70	
Connecting temperature [°C]		-10 ... +60	
Core cross section			
Solid conductors (1-wire) AWG / [mm ²]		26 ... 22 / 0,13 ... 0,32	
Litz wire (7-wire) AWG / [mm ²]		26 ... 22 / 0,14 ... 0,36	
Insulation diameter [mm]		≤ 1,60	
Cable diameter [mm]		4,5 ... 8	
Connection type		IDC /insulation displacement contacts in acc. with IEC 60352-4	
Cable strain relief [N]		> 50	
Shield contacting		covering a large surface > 180° (on cable shield)	
Electrical data			
Rated voltage [V]		50	
Rated current [A]		1.75 (at 20°C)	
Transmission characteristics		CAT5e	
Surge voltage category		I	
Contamination class		1	
Insulation resistance [MΩ]		> 500 (100 V)	
Contact resistance			
Solid conductors – IDC [mΩ]		< 1	
Litz wire – IDC [mΩ]		< 5	
Dielectric strength			
Contact – Contact [V]		> 1000, 1 min.	
Shield – Contact [V]		> 1500, 1 min.	



VS-08-RJ45-5-Q/IP20