

Featuring
Over 65 New
Products!



INTELLINETTM

N E T W O R K S O L U T I O N S

BRINGING NETWORKS TO LIFE



Antennas
Industrial Ethernet Switches
KVM Switches
Media Converters
Network Attached Storage
Network Cards
Network IP Cameras
Powerline Networking
Power over Ethernet
Print Servers
Routers
Switches
Wireless Networking

Bulk Wire
Cabinets and Racks
Cable Management
Cable Testers
Modular Hardware
Patch Cables
Patch Panels
Tools and Tool Kits
Wall Plates

**LIFETIME
WARRANTY**



Free Stand Cabinets
Page 56



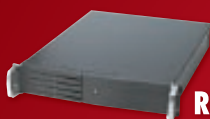
19" Open Racks
Page 60



Wall Mount Cabinets
Page 62



LAN Switches
Page 41



Rack Mount Cases & UPS
Page 65



Wireless Access Points
Page 24



Wireless Routers
Page 23



Wireless PC Cards
Page 25



Wireless PCI Cards
Page 26



Wireless USB Adapters
Page 25



Print Servers
Page 33



Network Attached Storage
Page 13



Network IP Cameras
Page 2



KVM Switches
Page 48



Patch Panels
Page 72



Network Tools & Tool Kits
Page 78



Network Cable Testers
Page 77



Network Cabling
Page 70



Network Accessories
Page 74



Patch Cables
Page 67



Network Cards
Page 34



OUR PRODUCTS COME WITH A WARRANTY THAT LASTS A LIFETIME



CONTENTS

Active Networking

	Page
GuestGate Internet Access Device	16-20
Internet Access	30-32
Media Converters	52-53
Network Attached Storage (NAS)	13
Network Cameras & Accessories	2-12
Network Cards	34
Power Over Ethernet	14-15
Print Servers	33
Switches, Desktop	35-37
Switches, Gigabit	41-43
Switches, Industrial	46-47
Switches, KVM	48-51
Switches, Rackmount	38-40
Switches, Remote Power Manager	45
Switches, SFP Transceivers	44
Wireless Networking	21-29

Passive Networking

Cabinets, 10" Wall Mount & Accessories	66
Cabinets, 19" Double Section Wall Mount	63
Cabinets, 19" Flat Pack	55
Cabinets, 19" Free-Standing & Accessories	56-57
Cabinets, 19" Server & Accessories	58-59
Cabinets, 19" Wall Mount & Accessories	62
Cabinets & Racks, Universal Accessories	64-65
Cable Testers	77
Cable, Bulk	70
Cable, Cat5e Patch	68
Cable, Cat6 Patch	69
Cable, Fiber Optic	71
Cable, Retail Packaged Network	67
Keystone Jacks/Wire Ties	74
Mounting Boxes/Wall Plates	76
Patch Panels	72-73
Racks, 19" Open & Mini and Accessories	61
RJ45 Components	75
Tool Kits	78
Tools	79

BEST-SELLING PRODUCTS



Wireless Networking, Pages 22-26

- 523431** Wireless G Broadband Router
- 503082** High Power Wireless G Access Point
- 500517** Wireless G PCI Card
- 502207** MIMO Wireless Turbo G Router
- 521499** Wireless G USB Adapter



Network Cameras, Pages 2-9

- 550710** Pro Series Network Camera
- 503181** Pro Series MPEG4 Network Camera
- 550260** High Speed Dome Indoor/Outdoor Network Camera
- 550253** Pro Series Wireless Network Camera



Bulk Cable, Page 70

- 325899** Cat5e Bulk Cable, Solid, 24 AWG, Grey
- 327749** Cat5e Bulk Cable, Solid, 24 AWG, Blue
- 341189** Cat6 Bulk Cable, Solid, 23 AWG, Plenum, Blue
- 309851** Cat5e Bulk Cable, Solid, 24 AWG, Plenum, Blue



Switches, Pages 35-43

- 523301** Fast Ethernet Office Switch, 5-Port, Metal
- 523318** Fast Ethernet Office Switch, 8-Port, Metal
- 523646** Fast Ethernet Office Switch, 5 Port, Plastic
- 523653** Fast Ethernet Office Switch, 8 Port, Plastic
- 520416** Fast Ethernet Rackmount Switch, 24 Port
- 523554** Gigabit Ethernet Rackmount Managed Switch



Wired Routers, Page 32

- 523608** High Speed Broadband Router
- 523240** GuestGate Internet Access Device
- 523455** Wireless ADSL 2+ Broadband Modem Router



Patch Cables, Pages 67-69

- 318976** Network Cable, Cat5e, UTP, 7 ft., Grey
- 319768** Network Cable, Cat5e, UTP, 10 ft., Grey
- 319973** Network Cable, Cat5e, UTP, 50 ft., Grey



Network Cards, Page 34

- 509510** Fast Ethernet PCI Network Card
- 522328** Gigabit PCI Network Card
- 500913** Hi-Speed USB 2.0 to Fast Ethernet Adapter



Racks and Cabinets, Pages 55-66

- 674261** 19" Free Stand Cabinet
- 681245** 19" Wall Mount Cabinet
- 674200** 19" Rack



We'll Keep An Eye On Things For You...



INTELLINET
NETWORK SOLUTIONS

BRINGING NETWORKS TO LIFE

Network Cameras

New Additions...

Pro Series Night Vision Network Cameras

MPEG4, CCD, Day/Night, IR Lens

550314 NTSC

550321 Wireless, NTSC

Page 5



Pro Series Digital PTZ Network Cameras

MPEG4 + M-JPEG Dual Mode,
1.3 Megapixel CMOS

550338 PAL/NTSC

550345 Wireless, PAL/NTSC

Page 6

Pro Series Network Video Server

MPEG4 + M-JPEG Dual Mode,
Two-way Audio, PAL/NTSC

550376

Page 9



See Our Cameras In Action!

High Speed Dome (PTZ Control Disabled):
<http://550260.networkipcamera.com>

Wireless Night Vision:
<http://550253.networkipcamera.com>

Digital PTZ:
<http://550338.networkipcamera.com>

Standard:
<http://550710.networkipcamera.com>

All cameras accessible with username "guest" and password "guest".



YOU CAN SEE MORE WITH OUR NETWORK CAMERAS!



Pro Series Night Vision Network Camera

We are experiencing a growing need, worldwide, for video surveillance and security solutions. INTELLINET NETWORK SOLUTIONS offers a comprehensive selection of network cameras to meet this demand. Included in the Pro Series line of products are the JPEG CMOS cameras (Model 550710), MPEG-4 cameras with a Super HAD CCD image sensor, as well as night vision network cameras with an integrated infrared lens that includes 12 IR LEDs. This diverse line is complete with wireless models (Wireless LAN IEEE 802.11g) and a highly professional High Speed Dome Camera for outdoor use featuring a 300x zoom, motion detection and a programmable guard tour function. All cameras have powerful CPUs and integrated web servers. The night vision cameras work amazingly well in absolute darkness (0 lux) and can even be combined with additional external infrared light sources. The High Speed Dome Camera, with it's Sony Super HAD CCD image sensor, 300x zoom, Pan-Tilt speed of 360° per second, and very high image quality even in very poor lighting (min. 0.0007 lux) is the ideal solution for security and remote video surveillance. INTELLINET NETWORK SOLUTIONS also offers a wide range of accessories such as camera enclosures, additional lenses, and Power-over-Ethernet LAN adapters.



Speed Dome: black and white mode at night.

More exciting news!



Dome Camera
(1st Quarter 2008)

The expansion of the successful INTELLINET NETWORK SOLUTIONS Pro Series Network Camera line is well under way. We are proud to be able to offer you the following new models as early as spring 2008: Two-Speed Dome Cameras for indoor use (with 10x and 23x optical zoom) will be available as well as a vandal-proof Dome Camera with audio support. You will also see the new 2.0 Megapixel version of the Pro Series Network Camera. Please stay tuned for new product announcements and be sure to visit us at www.networkipcamera.com.



550260



503181



550345



550710



550376

Product Summary

Model	Wireless	Compression Mode	Image Sensor	Maximum Image Resolution / Frame Rate	Day/Night Function	PTZ Control	Audio	Indoor/Outdoor Use	Page
503181		MPEG4 + MJPEG	CCD	30 fps @ 720 x 480 (D1)	Yes		Yes	Outdoor use with external housing	4
550253	Yes	MPEG4 + MJPEG	CCD	30 fps @ 720 x 480 (D1)	Yes		Yes	Outdoor use with external housing	4
550321	Yes	MPEG4 + MJPEG	CCD	30 fps @ 720 x 480 (D1)	Yes (IR)		Yes	Outdoor use with external housing	5
550314		MPEG4 + MJPEG	CCD	30 fps @ 720 x 480 (D1)	Yes (IR)		Yes	Outdoor use with external housing	5
550338		MPEG4 + MJPEG	1.3M CMOS	17 fps @ 720 x 480 (D1)		digital	Yes	Outdoor use with external housing	6
550345	Yes	MPEG4 + MJPEG	1.3M CMOS	17 fps @ 720 x 480 (D1)		digital	Yes	Outdoor use with external housing	6
550710		JPEG	CMOS	8 fps @ 640 x 480 (VGA)				Outdoor use with external housing	7
550260		MPEG4 + MJPEG	CCD	30 fps @ 720 x 480 (D1)	Yes	High Speed Dome, 300x		IP66, incl. heating & ventilation	8
550376		MPEG4 + MJPEG		30 fps @ 720 x 480 (D1)			Yes		9
550000		JPEG		8 fps @ 640 x 480 (VGA)					9

PRO SERIES NETWORK CAMERA

- 1/3" SONY Super HAD CCD image sensor for excellent image quality
- Up to 25 frames per second in all image resolutions
- Supports image resolutions up to 720 x 576 (D1)
- Integrated motion detection with pre- and post-alarm image/video buffering
- Event-triggered FTP and email upload of still images and videos
- Audio support, full duplex, up to 3.4 kHz
- Terminal block for external sensors or external alarm devices
- Supports low light conditions, minimum 0.1 lux
- Supports MPEG4 streaming and Motion-JPEG direct image access
- Video access through any standard Web browser
- Supports IEEE 802.3af Power over Ethernet injectors, mid- and endspans
- Integrated HTTP Web server supporting 50 simultaneous user connections
- Including Windows-based IP Installer and Multi-Viewer software for up to four cameras

503181 MPEG4, CCD, Day/Night, NTSC

550253 Wireless, MPEG4, CCD, Day/Night, NTSC

Power over Ethernet (PoE) Injector **NEW**

- Ideal when AC power is not available
- Supports all IEEE 802.3af-compliant PoE devices
 - Wireless LAN access points and bridges
 - VoIP (Voice over Internet Protocol) telephones
 - IP surveillance cameras
- Supports IEEE 802.3af detection and short circuit, overload and high-voltage protection



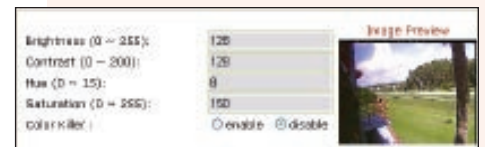
503389 1 Port, 48 V DC, IEEE 802.3af Compliant



Web Browser Live Screen



Motion Detection Setup Screen



Setup for Image Preview

Specifications

Standards

- IEEE 802.3 (10Base-T Ethernet)
- IEEE 802.3u (100Base-TX Fast Ethernet)
- IEEE 802.3af (Power over Ethernet)

General

- 32-bit ARM9 RISC CPU
- 16 MByte video frame buffer
- 8 Mbyte flash memory
- 32 Mbyte SDRAM
- Supported image resolutions: D1 (720 x 576), CIF (352 x 288)
- Audio support:
 - Full duplex
 - Bandwidth: 300 Hz to 3.4 kHz
 - Audio input: 3.5 mm / 1.8" microphone input jack
 - Audio output: 3.5 mm / 1.8" speaker output jack
- Protocols supported: TCP/IP, UDP, HTTP, FTP, SMTP, DHCP, DNS, ARP, ICMP, RTSP, RTP
- Certifications: FCC Class B, RF: EN300328, EMC: EN301489-1/-7, Safety: EN60950-1

Image Sensor and Lens Specification

- 1/3" SONY Super HAD CCD sensor
- S/N ratio: > 48 dB
- Video output: 1.0 V_{pp} (75 Ohms, composite)
- Automatic white balance control
- Image Control, Brightness, Contrast, Saturation, Hue
- 0.1 minimum lux
- Electronic shutter: 1/50 - 1/10,000 sec.
- Replaceable standard 1/3" CS mount lens
- Focal length 6.0 mm, angular field of view 54°, object distance 0.1 m to infinity
- Maximum relative aperture F1.8

System Requirements

- Windows 2000, XP, Vista, Linux, Mac OS X
- Computer with network connection
- Web browser support:
 - MS Internet Explorer 5.0 or higher (ActiveX + Java)
 - Mozilla 1.x, Mozilla Firefox (Java)
 - Netscape Navigator 6.0 or higher (Java)
 - Opera (Java)
 - Safari (Java)
 - Konqueror (Java)

See Our Cameras In Action!
Visit www.networkipcamera.com

PRO SERIES NIGHT VISION NETWORK CAMERA

- For surveillance in low light or nighttime conditions, minimum 0 lux (complete darkness)
- Equipped with an IR lens with 12 IR LEDs and 1 IR sensor
- IR sensitive, supports external IR Illuminators



NEW

550314 MPEG4, CCD, Day/Night, IR Lens, NTSC

550321 Wireless, MPEG4, CCD, Day/Night, IR Lens, NTSC

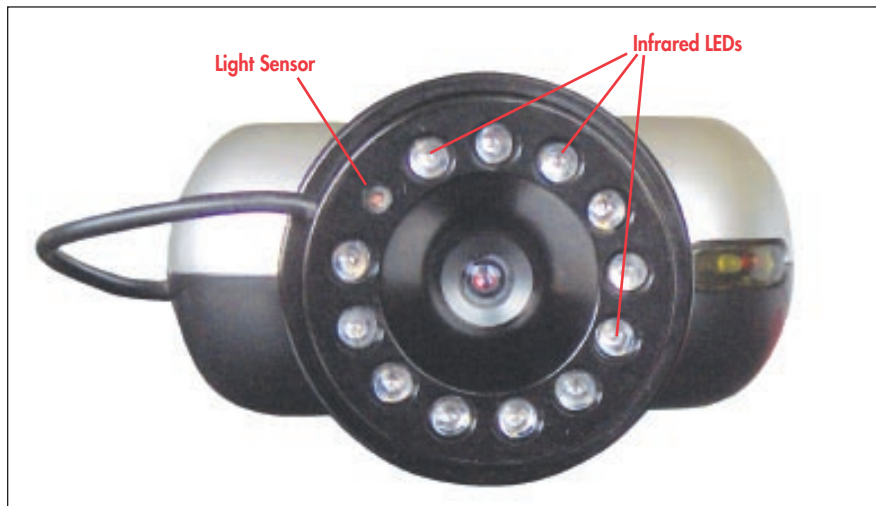


Power over Ethernet (PoE) Injector **NEW**

- Ideal when AC power is not available
- Supports all IEEE 802.3af-compliant PoE devices
 - Wireless LAN access points and bridges
 - VoIP (Voice over Internet Protocol) telephones
 - IP surveillance cameras
- Supports IEEE 802.3af detection and short circuit, overload and high-voltage protection



503389 1 Port, 48 V DC, IEEE 802.3af Compliant



Specifications

Image Sensor and Lens Specifications

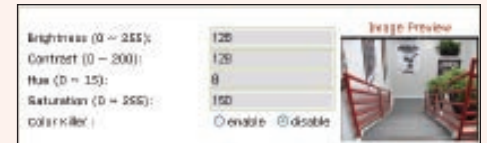
- 1/3" SONY Super HAD CCD sensor
- 470k pixel array
- Minimum illumination: 0 lux with IR LEDs on



Web Browser Live Screen



Motion Detection Setup Screen



Setup for Image Preview



Daylight View



Night Vision View

PRO SERIES DIGITAL PTZ NETWORK CAMERA

- 1.3 Megapixel CMOS image sensor for crystal-clear images
- DigitalClarity™ CMOS imaging technology
- Digital Pan/Tilt/Zoom control via Web browser
- Digital Pan/Tilt/Zoom with no moving parts; therefore, no wear and tear
- Up to 37 frames per second in VGA resolution
- Supports image resolutions up to 720 x 480 (D1)
- Integrated motion detection with pre- and post-alarm image/video buffering
- Event-triggered FTP and email upload of still images and videos
- Audio support, full duplex, up to 3.4 kHz
- Terminal block for external sensors or external alarm devices
- Supports MPEG4 and MotionJPEG image compression
- Video access through any standard Web browser
- Supports IEEE 802.3af Power over Ethernet injectors, mid- and endspans
- Integrated HTTP Web server supporting 50 simultaneous user connections
- Including Windows-based IP Installer and Multi-Viewer software for up to 4 cameras

NEW



550338 MPEG4 + MotionJPEG Dual Mode,
1.3 Megapixel CMOS, PAL/NTSC

550345 Wireless, MPEG4 + MotionJPEG Dual Mode,
1.3 Megapixel CMOS, PAL/NTSC

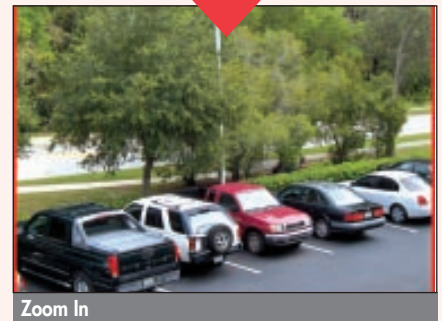
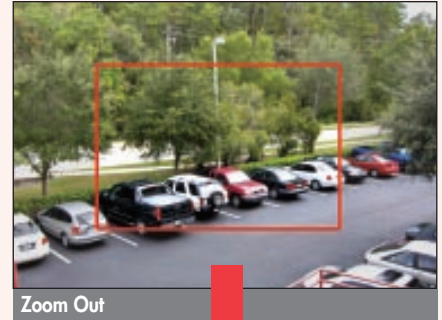
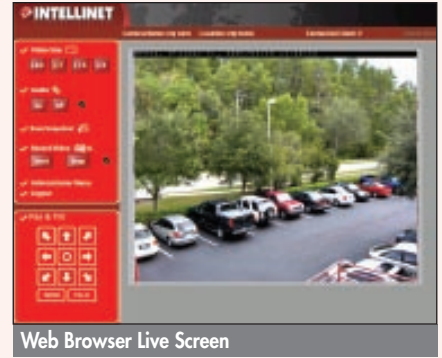


Power over Ethernet (PoE) Injector **NEW**

- Ideal when AC power is not available
- Supports all IEEE 802.3af-compliant PoE devices
 - Wireless LAN access points and bridges
 - VoIP (Voice over Internet Protocol) telephones
 - IP surveillance cameras
- Supports IEEE 802.3af detection and short circuit, overload and high-voltage protection



503389 1 Port, 48 V DC, IEEE 802.3af Compliant



Specifications

Standards

- IEEE 802.3 (10Base-T Ethernet)
- IEEE 802.3u (100Base-TX Fast Ethernet)
- IEEE 802.3af (Power over Ethernet)

General

- 32-bit ARM9 RISC CPU
- 16 MByte video frame buffer
- 8 Mbyte flash memory
- 32 Mbyte SDRAM
- Supported image resolutions: D1 (720 x 576), CIF (352 x 288)
- Audio support:
 - Full duplex
 - Bandwidth: 300 Hz to 3.4 kHz
 - Audio input: 3.5 mm / 1.8" microphone input jack
 - Audio output: 3.5 mm / 1.8" speaker output jack
- Protocols supported: TCP/IP, UDP, HTTP, FTP, SMTP, DHCP, DNS, ARP, ICMP, RTSP, RTP
- Certifications: FCC Class B, RF: EN300328, EMC: EN301489-1/-7, Safety: EN60950-1

Image Sensor and Lens Specification

- 1/3" SONY Super HAD CCD sensor
- S/N ratio: > 48 dB
- Video output: 1.0 V_{pp} (75 Ohms, composite)
- Automatic white balance control
- Image Control, Brightness, Contrast, Saturation, Hue
- 0.1 minimum lux
- Electronic shutter: 1/50 - 1/10,000 sec.
- Replaceable standard 1/3" CS mount lens
- Focal length 6.0 mm, angular field of view 54°, object distance 0.1 m to infinity
- Maximum relative aperture F1.8

System Requirements

- Windows 2000, XP, Vista, Linux, Mac OS X
- Computer with network connection
- Web browser support:
 - MS Internet Explorer 5.0 or higher (ActiveX + Java)
 - Mozilla 1.x, Mozilla Firefox (Java)
 - Netscape Navigator 6.0 or higher (Java)
 - Opera (Java)
 - Safari (Java)
 - Konqueror (Java)

See Our Cameras In Action!
Visit www.networkipcamera.com

PRO SERIES NETWORK CAMERA

- 1/3" CMOS image sensor for crystal clear images
- Supports image resolutions up to 640 x 480 (VGA)
- Integrated motion detection with pre- and post-alarm image buffering
- Event-triggered FTP and email upload of still images
- Terminal block for external sensors or external alarm devices
- Supports light conditions down to 2.5 lux
- JPEG video compression, up to 30 frames per second
- Video access through any standard Web browser
- Supports INTELLINET NETWORK SOLUTIONS 521444 PoE Injector
- Integrated HTTP Web server supporting 100 simultaneous user connections
- Including Windows-based IP Installer and Multi-Viewer software for up to four cameras

550710 JPEG, CMOS, PAL/NTSC



RS-232 Serial Port

12 V DC connection

Terminal-Block Adapter

10/100 Mbps RJ-45 Network Port



Web Browser Live Screen



Administrator Menu

Power Over Ethernet Injector

Designed exclusively for use with the PoE version of the INTELLINET NETWORK SOLUTIONS IP Camera

- Ideal for applications where power is not present
- Replaces the power cord of the camera
- For use with Network IP Camera model 550710 only

521444



Specifications

Standards

- IEEE 802.3 (10Base-T Ethernet)
- IEEE 802.3u (100Base-TX Fast Ethernet)
- IEEE 802.3af (Power over Ethernet)

General

- 32-bit ARM9 RISC CPU
- 16 MByte video frame buffer
- 8 Mbyte flash memory
- 32 Mbyte SDRAM
- Supported image resolutions: D1 (720 x 576), CIF (352 x 288)
- Audio support:
 - Full duplex
 - Bandwidth: 300 Hz to 3.4 kHz
 - Audio input: 3.5 mm / 1.8" microphone input jack
 - Audio output: 3.5 mm / 1.8" speaker output jack
- Protocols supported: TCP/IP, UDP, HTTP, FTP, SMTP, DHCP, DNS, ARP, ICMP, RTSP, RTP
- Certifications: FCC Class B, RF: EN300328, EMC: EN301489-1/-7, Safety: EN60950-1

Image Sensor and Lens Specification

- 1/3" SONY Super HAD CCD sensor
- S/N ratio: > 48 dB
- Video output: 1.0 Vpp (75 Ohms, composite)
- Automatic white balance control
- Image Control, Brightness, Contrast, Saturation, Hue
- 0.1 minimum lux
- Electronic shutter: 1/50 - 1/10,000 sec.
- Replaceable standard 1/3" CS mount lens
- Focal length 6.0 mm, angular field of view 54°, object distance 0.1 m to infinity
- Maximum relative aperture F1.8

System Requirements

- Windows 2000, XP, Vista, Linux, Mac OS X
- Computer with network connection
- Web browser support:
 - MS Internet Explorer 5.0 or higher (ActiveX + Java)
 - Mozilla 1.x, Mozilla Firefox (Java)
 - Netscape Navigator 6.0 or higher (Java)
 - Opera (Java)
 - Safari (Java)
 - Konqueror (Java)

See Our Cameras In Action!
Visit www.networkipcamera.com

HIGH SPEED DOME INDOOR/OUTDOOR NETWORK CAMERA

- Tamper proof outdoor housing with integrated heater and blower
- IP66 rated: dust-tight and protection against heavy seas
- 1/4" SONY Super HAD CCD image sensor for excellent image quality
- Powerful 30x optical zoom module with auto-focus and 10x digital zoom for a total 300x zoom
- Pan Speed of 360° per second
- 20 programmable preset positions
- 20 step guard tour, programmable
- Supports extreme low light conditions, minimum 0.0007 lux with DSS
- Engages black and white mode automatically below 0.7 lux
- Supports image resolutions up to 720 x 576 (D1)
- Up to 25 frames per second in all image resolutions
- Supports MPEG4 streaming and Motion-JPEG
- Supports MPEG4 Video streaming with CBR (constant bit rate) and VBR (variable bit rate) modes
- Controllable frame rate
- Integrated motion detection with pre- and post-alarm video buffering
- Motion detection grid featuring 300 individual detection areas which can be activated or deactivated individually
- Event-triggered FTP and E-Mail upload of videos
- Terminal block for external sensors or external alarm devices
- Video access through any standard web browser
- Integrated HTTP Web Server supporting 50 simultaneous user connections
- Integrated E-Mail, FTP, DDNS and DHCP client
- Includes Windows based camera manager software (IP installation and Upgrade)



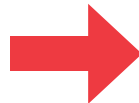
550260 MPEG4, CCD, Day/Night, Temperature Controlled, NTSC

550383 Replacement Clear Dome Plexi-Glass

NEW



Zoom Out



**Powerful
300x Zoom**



Zoom In



Web Browser Live Screen



Preset Position Setup Screen



Motion Detection Setup Screen

Specifications

Standards

- IEEE 802.3 (10Base-T Ethernet)
- IEEE 802.3u (100Base-TX Fast Ethernet)
- IP66 (Ingress Protection)

General

- Supported image resolutions: 720 x 576, 640 x 576, 720 x 288, 640 x 288, 352 x 288, 176 x 144
- Protocols supported: HTTP, TCP, UDP, SMTP, UDP, FTP, ARP, DNS, DynDNS
- Certifications: FCC Class A, EMC: EN61000-3-2, EN61000-3-3, EN55022, EN55024

Image Sensor and Lens Specification

- 1/4" SONY Super HAD CCD sensor
- Total pixels: 410K, 811 (H) x 508 (V)
- Horizontal Resolution, more than 540 TV Lines
- S/N ratio: More than 50 dB
- Video output: 1.0 Vp-p (75 Ohms, Composite)
- Automatic white balance control
- Image control, Brightness, Contrast, Saturation, Hue
- Minimum illumination color: 0.7 lux at 30IRE / 0.1 lux (DSS)
- Minimum illumination black and white: 0.1 lux (Day & Night Mode) / 0.0007 lux (DSS)
- Shutter speed: 1/120 - 1/60,000 sec.
- Focal length 3.3 - 99 mm
- Pan rotation angle: 360°
- Tilt rotation angle: -2° - 90°
- Angle of view: approx 58.17° (Wide), approx 2.2° (Zoom)
- Maximum Relative Aperture F1.6

Environmental

- Dimensions:
 - Height: 302 mm (11.8 in.)
 - Diameter: 216.8 mm (8.5 in.)
- Weight:
 - Housing and dome drive unit: 3.0 kg (6.6 lbs.)
 - Wall mount bracket: 0.9 kg (1.9 lbs.)
- Operating temperature: -40 - 60°C (-40 - 140°F)
- Operating humidity: 0 - 90% RH, non-condensing
- Storage temperature: -5 - 50°C (23 - 122°F)

Power

- External power adapter:
 - Input: 240 V AC, 50 Hz (US Version: 110 V AC, 60 Hz)
 - Output: 24 V AC, 1.5 A
- Power consumption: 18 Watts (maximum)

System Requirements

- Windows 2000, XP, Vista
- Computer with network connection
- Web browser support:
 - MS Internet Explorer 5.0 or higher (ActiveX)
 - Netscape Navigator, Mozilla, Firefox, Opera (Java for JPEG only)

See Our Cameras In Action!
Visit www.networkipcamera.com

NETWORK VIDEO SERVER

Pro Series Network Video Server

- 1 analog video BNC input, 1 analog video BNC loop-through port
- Supports MPEG4 and MotionJPG image compression
- Video stream up to 30 (NTSC) or 25 (PAL) frames per second
- PAL/NTSC video auto-detection
- Integrated motion detection with pre- and post-alarm image/video buffering
- EventTriggered FTP and email upload of still images and videos
- Audio support, full duplex, up to 3.4 kHz
- Terminal block for external sensors or external alarm devices
- Supports IEEE 802.3af Power over Ethernet injectors, mid- and endspans
- Supports Pan/Tilt/Zoom CCTV cameras
- Supports MPEG4 video streaming with CBR (constant bit rate) and VBR (variable bit rate) modes
- Controllable frame rate
- Integrated HTTP Web server supporting 50 simultaneous user connections
- Including Windows-based IP Installer and Multi-Viewer software for up to 4 Network Cameras and Network Video Servers
- Integrated email, FTP, DDNS and DHCP client
- Extensive CGI API for software integration and remote programming operations
- Easy-to-use OXC for MS Visual Studio applications

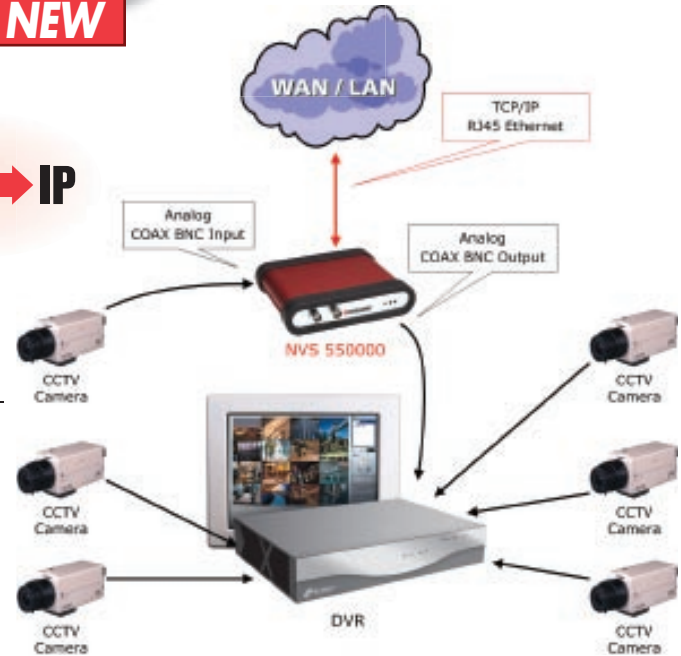
550376 MPEG4 + MotionJPG Dual Mode, Two-way Audio, PAL/NTSC



NEW



CCTV → IP



Network Video Server

- Supports JPEG image compression
- Integrated HTTP Web server supporting 100 simultaneous user connections

550000 JPEG, PAL/NTSC

Turn your CCTV Camera into a professional Network IP Camera!

Specifications

Standards

- IEEE 802.3 (10Base-T Ethernet)
- IEEE 802.3u (100Base-TX Fast Ethernet)
- IEEE 802.3af (Power over Ethernet)

General

- 32-bit ARM9 RISC CPU
- 16 MByte video frame buffer
- Image buffer: 200 frames (CIF)
- 8 Mbyte flash memory
- 32 Mbyte SDRAM
- Supported image resolutions:
 - PAL: D1 (720 x 576), VGA (640 x 576), CIF (352 x 288)
 - NTSC: D1 (720 x 480), VGA (640 x 480), CIF (352 x 240)
- Video frame rate: max. 30 fps @ D1, VGA and CIF
- Audio support:
 - Full duplex
 - Bandwidth: 300 Hz to 3.4 kHz
 - Audio input: 3.5 mm / 1.8" microphone input jack
 - Audio output: 3.5 mm / 1.8" speaker output jack
- Protocols supported: TCP/IP, UDP, HTTP, FTP, SMTP, DHCP, DNS, ARP, ICMP, RTSP, RTP
- Certifications: FCC Part 15, Subpart B Class A, CE Directive 89/336/EEC (EMC Directive)

PTZ Control

- Selectable baud rate (2400, 4800, 9600 bps)
- Selectable ID (1-255)
- Supported protocols: Pelco D/P
- Supported cameras: HONEYWELL HRX-2000, VICON V1311RB-VPS, LG IPTA100L, SAMSUNG TECHWIN, SAMSUNG ELECTRONICS MRX-1000, INTER-M, DONGYANG UNITECH DRX302A

External IO

- RS-485 port for PTZ control
- DC output for power supply to external device (12 V, 500 mA)
- Sensor input
- Alarm output

LEDs

- Power
- Network
- On Air/Network Video Server Active

Environmental

- Dimensions: 142 (W) x 145 (L) x 31 (H) mm (5.6 x 5.7 x 1.2 in.)
- Weight: 1.3 kg (2.8 lbs.)
- Operating temperature: 0 – 50°C (32 – 122°F)
- Operating humidity: 20 – 80% RH, non-condensing
- Storage temperature: 0 – 60°C (0 – 149°F)

System Requirements

- Windows 2000, XP, Vista, Linux, Mac OS X
- Computer with network connection
- Web browser support: MS Internet Explorer 5.0 or higher (ActiveX + Java), Mozilla 1.x, Mozilla Firefox (Java), Netscape Navigator 6.0 or higher (Java), Opera (Java), Safari (Java), Konqueror (Java)

Detailed Features and Specifications for 550000 are available at www.networkipcamera.com.

NETWORK CAMERA ENCLOSURES

For Wired and Wireless

Network Camera Outdoor Enclosure **NEW**

- Weatherproof enclosure protects INTELLINET NETWORK SOLUTIONS Pro Series Network Cameras for outdoor use
- Integrated heating element and fan for severe conditions
- IP66 rated: dust-tight and protection against heavy seas
- Cable Manager mounting bracket included
- Enclosure with one cable outlet (cables running inside of the bracket for additional protection)
- Material: Aluminum
- Mounting hardware included

176224



Network Camera Indoor/Outdoor Enclosure **NEW**

- Enclosure protects INTELLINET NETWORK SOLUTIONS Pro Series Network Cameras for indoor and outdoor use
- IP66 rated: dust-tight and protection against heavy seas
- Mounting bracket included
- Enclosure with cable outlet on under side
- Material: Aluminum
- Mounting hardware included

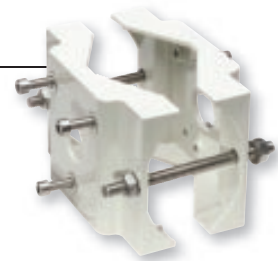
176323



Pole Mount

- Designed for outdoor camera enclosure models 176323 and 176224
- For pole diameters up to 110 mm (4.3 in.) wide
- Made of sturdy aluminum die-cast
- Maximum capacity: 2 kg (4.4 lbs)
- Mounting hardware included

176248 For Outdoor Camera Enclosures



MOUNTING BRACKETS

Camera Mounting Bracket **NEW**

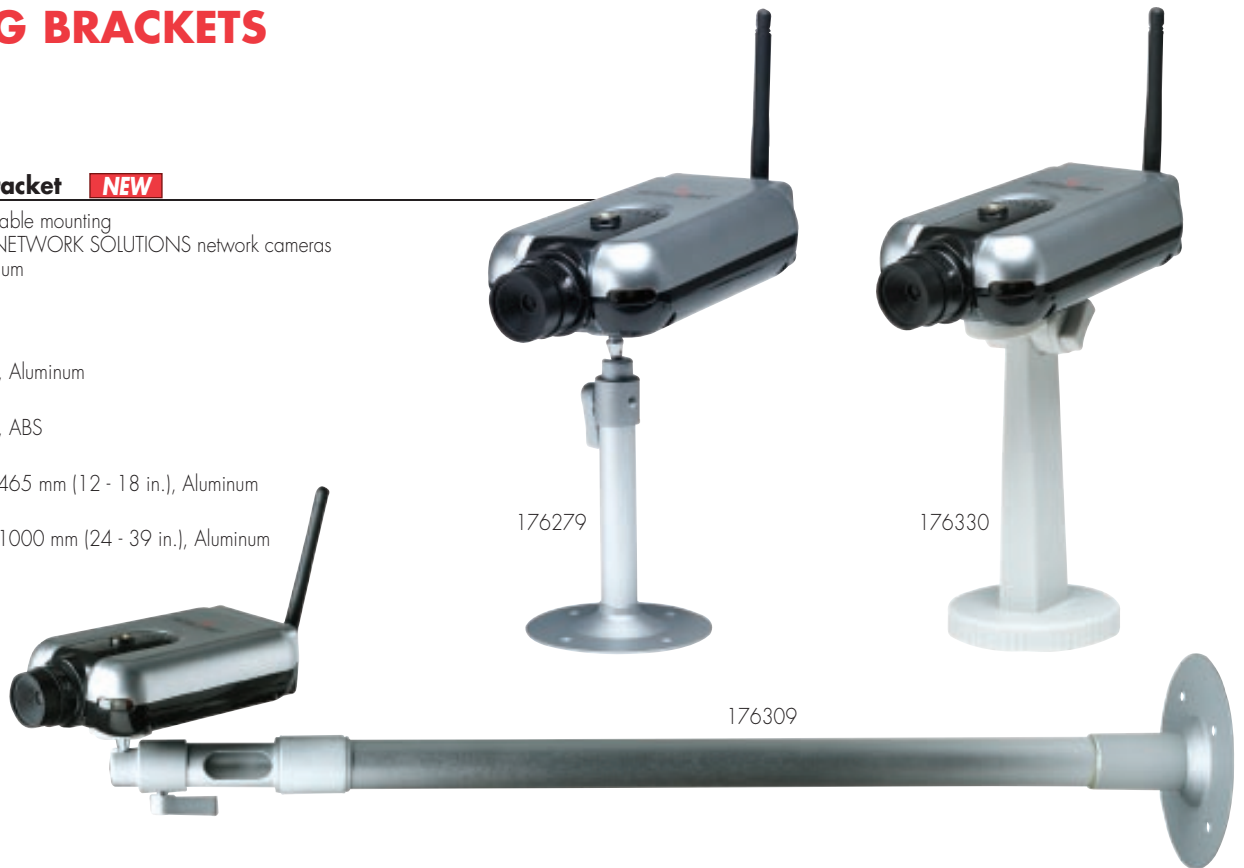
- Ideal for wall, ceiling and table mounting
- For Pro-Series INTELLINET NETWORK SOLUTIONS network cameras
- Bracket made out of aluminum
- Swivel angle: 360°
- Tilt angle: 90°
- For indoor and outdoor use

176279 130 mm (5.1 in.), Aluminum

176330 160 mm (6.3 in.), ABS

176293 Adjustable 305 - 465 mm (12 - 18 in.), Aluminum

176309 Adjustable 617 - 1000 mm (24 - 39 in.), Aluminum



Ceiling Mount Bracket

- Ideal for ceiling mounting
- For Pro-Series INTELLINET NETWORK SOLUTIONS network cameras
- Bracket made out of metal
- Swivel angle: 360°
- Tilt angle: 90°
- For indoor and outdoor use

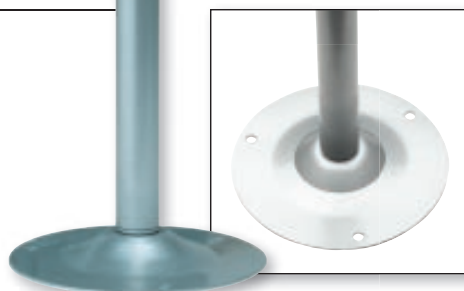
172721



Table Mount Bracket

- Ideal for table and wall mounting
- For Pro-Series INTELLINET NETWORK SOLUTIONS network cameras
- Bracket made out of metal
- Swivel angle: 360°
- Tilt angle: 90°
- For indoor and outdoor use

172714



CONTINUOUS PAN MOTOR

Continuous Pan Motor

- Ideal for covering whole rooms
- Continuous pan between pre-set stops set by jumpers
- 350° range of rotation
- Pan speed: 5°/sec
- Manual on/off only, not browser controlled
- 6 ft. power cord
- Mounting bracket and hardware included

173261



POWER OVER ETHERNET DEVICES

Power Over Ethernet (PoE) Injector

- Designed exclusively for use with the PoE version of the INTELLINET NETWORK SOLUTIONS IP Camera
- Ideal for applications where power is not present
- Replaces the power cord of the camera
- For use with Network IP Camera model 550710 only

521444



Power Over Ethernet (PoE) Injector **NEW**

- Ideal when AC power is not available
- Supports all IEEE 802.3af-compliant PoE devices
 - Wireless LAN access points and bridges
 - VoIP (Voice over Internet Protocol) telephones
 - IP surveillance cameras
- Supports IEEE 802.3af detection and short circuit, overload and high-voltage protection

503389



LENSES

Zoom Lens

- 3.5 - 8.0 mm variable focal length
- F 1.4
- Field of view 35.4 - 77.5°
- Manual focus & iris

550680



Wide Angle Lens

- 2.6 mm focal length
- F 1.6
- Field of view 98.7°
- Manual focus & iris

550673



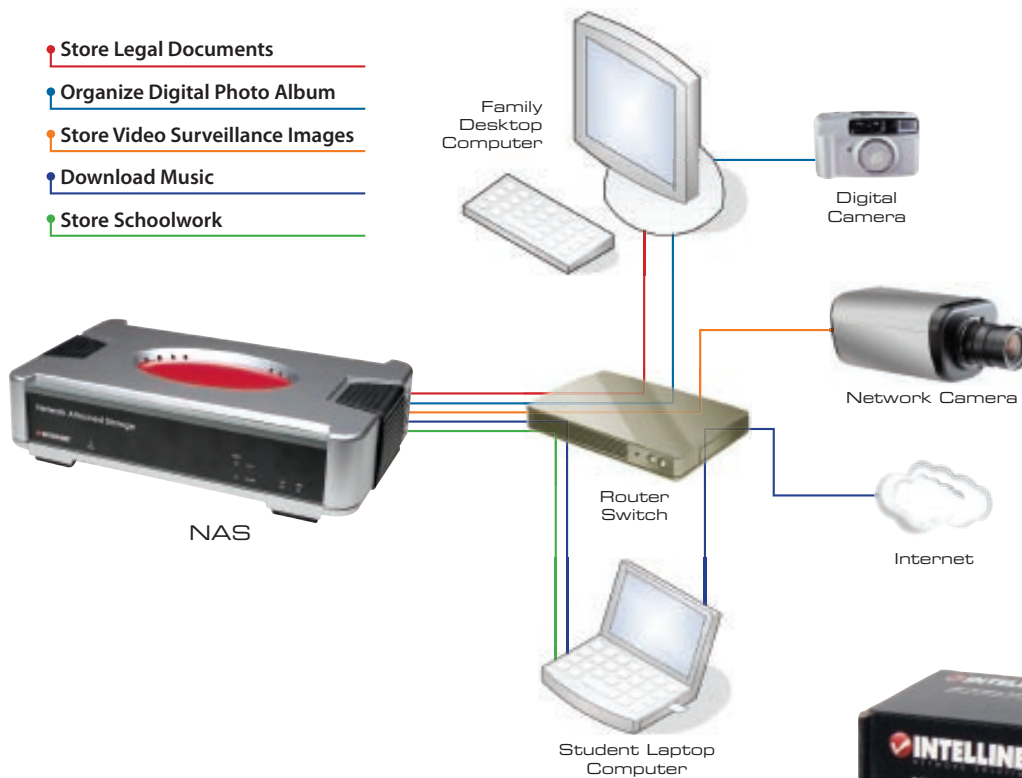
Wide Angle Lens

- 2.5 mm focal length
- F 2.0
- Field of view 104°
- Manual focus & iris

550123



Standard Camera



Network Storage Adapter

- Convenient small size
- Supports up to 4 USB external drives
- Compatible with most USB storage devices (thumb drives or external hard drives up to 400 GBytes, not included)
- Self repairing and de-fragmentation for data integrity and performance
- Includes built-in USB print server
- FTP server included (share files via FTP client or browser)
- Installs quickly and easily
- No user licensing to purchase
- Easily create users for access
- Configuration over networked PC's Web browser
- Firmware update via HTTP
- Compact design - Portable
- Supports CIFS, FTP, HTTP, NFS, AFP 2.2 protocols
- User and share folder level security
- Optimized to use the maximum amount of space on hard drives

522496



Network Attached Storage (NAS) Appliance

- Uses Inexpensive 3.5" ATA Hard Drives (up to 400 GBytes, HDD Not Included)
- Supports 2 USB External Hard Drives
- Cross Platform File Sharing (Windows, Apple, Linux)
- Self repairing and de-fragmentation for data integrity and performance
- Includes Built-in USB Print Server
- FTP Server included (share files via FTP client or browser)
- Installs quickly and easily
- No user licensing to purchase
- Easily create user and groups for access
- Configuration over networked PC's web browser
- Firmware Update via HTTP
- Compact Design-Portable
- Supports CIFS, FTP, HTTP, NFS, AFP 2.2 Protocols
- User and share folder level security
- Optimized to use the maximum amount of space on hard drives

501712



SOHO Server Plus

- All-in-one device (NAS, router, switch, VPN, print/Web/email server)
- Four Hi-Speed USB ports for external USB hard drives and printers
- Quick and easy installation of additional network storage
- Cross-platform file sharing (Windows, Linux & Mac)
- Holds up to two internal IDE hard drives up to 500 GBytes each (not included)
- RAID support Level 1 (mirroring)
- UPNP media server

508018



High Power Wireless G Access Point

- IEEE 802.3af-compliant PoE-powered device with one PoE (PD) port
- Strong 23 dBm output power rating
- Two LAN ports (PD port plus Ethernet port to cascade access points)
- Supports Wireless Distribution System (WDS), Bridging, Client and Repeater modes
- Supports WEP, WPA/WPA2 data encryption and client access control
- Up to five times faster than 802.11b; 54 Mbps link speed
- Compatible with all 802.11b & g wireless products
- Acts as DHCP server or DHCP client
- Easy Web-based management

503082



Install a wireless access point without the need for an AC power receptacle.

Power over Ethernet (PoE) Injector **NEW**

- Ideal when AC power is not available
- Supports all IEEE 802.3af-compliant PoE devices
 - Wireless LAN access points and bridges
 - VoIP (Voice over Internet Protocol) telephones
 - IP surveillance cameras
- Supports IEEE 802.3af detection and short circuit, overload and high-voltage protection

503389



PoE Web-Smart Switch, 8 Port

- 10/100 auto-sensing ports — automatically detect optimal network speeds
- All RJ-45 ports with Auto-MDIX and NWay auto-negotiation support
- IEEE 802.3af-compliant RJ-45 PSE/PoE output ports
- Power output up to 19.2 Watts per port
- Supports VLAN, QoS, bandwidth control per port
- Store and forward switching architecture
- Full/half duplex operation
- Supports 4096 MAC address entries
- 128 kBytes buffer memory
- Desktop-size metal case
- LEDs for power, link/activity and PoE

502917



Connect up to eight PoE compliant devices and provide network connectivity and DC power to all eight of them.



PoE Office Switch, 8 Port **NEW**

- 10/100 auto-sensing ports — automatically detect optimal network speeds
- All RJ-45 ports with Auto-MDIX and NWay auto-negotiation support
- IEEE 802.3af-compliant RJ-45 PSE/PoE output ports
- Power output up to 19.2 Watts per port
- Store and forward switching architecture
- Full/half duplex operation
- Supports 4096 MAC address entries
- 128 kBytes buffer memory
- Desktop-size metal case
- LEDs for power, link/activity and PoE

503358



Fast Ethernet Office Switch, 8 Port

- IEEE 802.3af-compliant, PoE-powered device
- 10/100 auto-sensing ports — automatically detect optimal network speeds
- Supports any combination of 10 Mbps or 100 Mbps network devices
- Port 8 with PoE support — can be used as PD port or regular Fast Ethernet port
- All RJ-45 ports with Auto-MDIX and NWay auto-negotiation support
- Store and forward switching architecture
- Full/half duplex operation
- Supports 4096 MAC address entries
- 128 kBytes buffer memory
- Compact metal case
- LEDs for power, link/activity
- External power adapter included for non-PoE operation

502894



Can be used as a standard Fast Ethernet LAN Switch for all eight ports. Optionally can be powered from a PoE switch through Port 8.

PoE Midspan, 8 Port

- IEEE 802.3af-compliant, 8-Port PoE midspan
- 10/100 auto-sensing ports — automatically detect optimal network speeds
- 8 RJ-45 input ports with NWay support
- 8 IEEE 802.3af-compliant RJ-45 PSE/PoE output ports for signal and data
- Power output up to 19.2 Watts per port
- 1.9" rackmount metal case
- LEDs for power and PoE link

502931



Installed between a standard 8 port LAN switch and eight PoE compliant devices (also referred to as "PoE Injector Hub").

PoE Splitter

- IEEE 802.3af-compliant PoE splitter
- Can be used to connect non-PoE IEEE 802.3af-compliant devices to a PoE injector or PoE switch
- Output current, selectable: 5 V DC or 12 V DC
- Output power, max.: 19.2 W
- 10/100 auto-sensing input port - automatically detects optimal network speeds
- RJ-45 input port with Auto-MDIX and NWay auto-negotiation support
- Full/half duplex operation
- Compact metal case
- LED for link on PoE input port

502900



Used to connect a non-PoE device to a PoE compliant LAN Switch port.

IEEE 802.3af compliant PoE Injector Switch or Midspan



Power Output Selector:
12 or 5 V DC



PoE Splitter



Non PoE Compliant Wireless Access Point

Legend (cable color):

- 100 Mbps data signal
- Power and data signal
- Power 5/12 V DC

Are Your Customers...

1. Tired of Configuring Guests' Notebooks?
2. Worried About the Security of Your Network?
3. Limited Budget?

The Problem: How to Provide Secure Internet Access to Visitors

Mobile Consumers Expect Free Internet Access

The emerging mobile computing culture we live in is very evident as people bring their laptops into hotels, coffee shops, lobbies, and waiting rooms, expecting free Internet access as a convenience provided by the business.

Internet Access for Corporate Visitors is a Requirement

IT administrators currently spend a lot of valuable time providing visitors with access to the Internet. This is a problem because many times these requests are not scheduled or planned, and the guests either have to wait or the IT administrator needs to be interrupted during an otherwise high-priority activity.

Vendors, contractors, auditors and, yes, even customers, bring their laptop computers with them when meeting with other companies, and need to check e-mail as well as access information from the Internet while conducting business.

Network Security Cannot be Compromised

Providing "outsiders" access to the Internet can pose a security risk to the company's private network, and this needs to be done correctly to comply with the organization's security policies. Visitors need to know that they are not at risk when they access the Internet through a public access point.

Configuration of the Visitor's Laptop is Often Required

Most people are generally uncomfortable having someone make changes to their laptop to enable Internet access, and IT administrators are also generally reluctant to touch other people's computers, as they may be held accountable for any problems the guest may have with their computer after the changes are made.

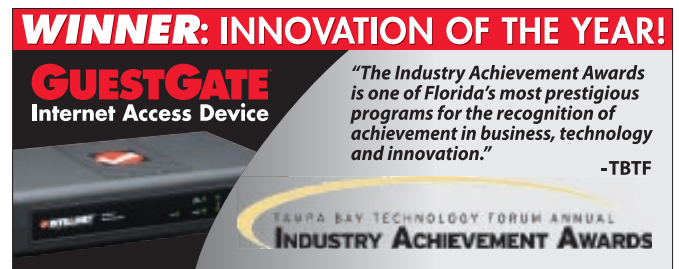
Existing Hotspot Gateway Products are Expensive

Although several "Hotspot Gateway" products are available, they contain added features designed to provide paid Internet access in public environments. Subsequently these products are priced high, complex to install, and include many functions that are not needed to simply accommodate visitors with free Internet access. Another reality is that associated technology may become quickly outdated.

The Opportunity: Why Consider GuestGate?

As an IT administrator, ask yourself what it is you do today when visitors to your offices or business location require Internet access. If you even accommodate the demand, chances are your IT administrator must perform time-consuming configurations on the visitors' computers – potentially leaving portions of the network or user community with no connectivity – while creating security risks. Whether a corporate facility, hospital, school, graphics design firm or other vertical application, the challenge remains the same. With GuestGate, the hassles and security risks, and high costs to resolve are all a thing of the past.

As a business or store owner, do your customers or other visitors spend any time in a lobby, waiting room, or conference room? Do you think they would appreciate being able to check their e-mail or access the Internet while they are conducting business or visiting your establishment? Everyone who practices mobile computing wants Web access, but who wants to pay for it? The businesses that offer this convenience gain a distinct customer service and relationship-building advantage.



www.GuestGate.com

The Solution:

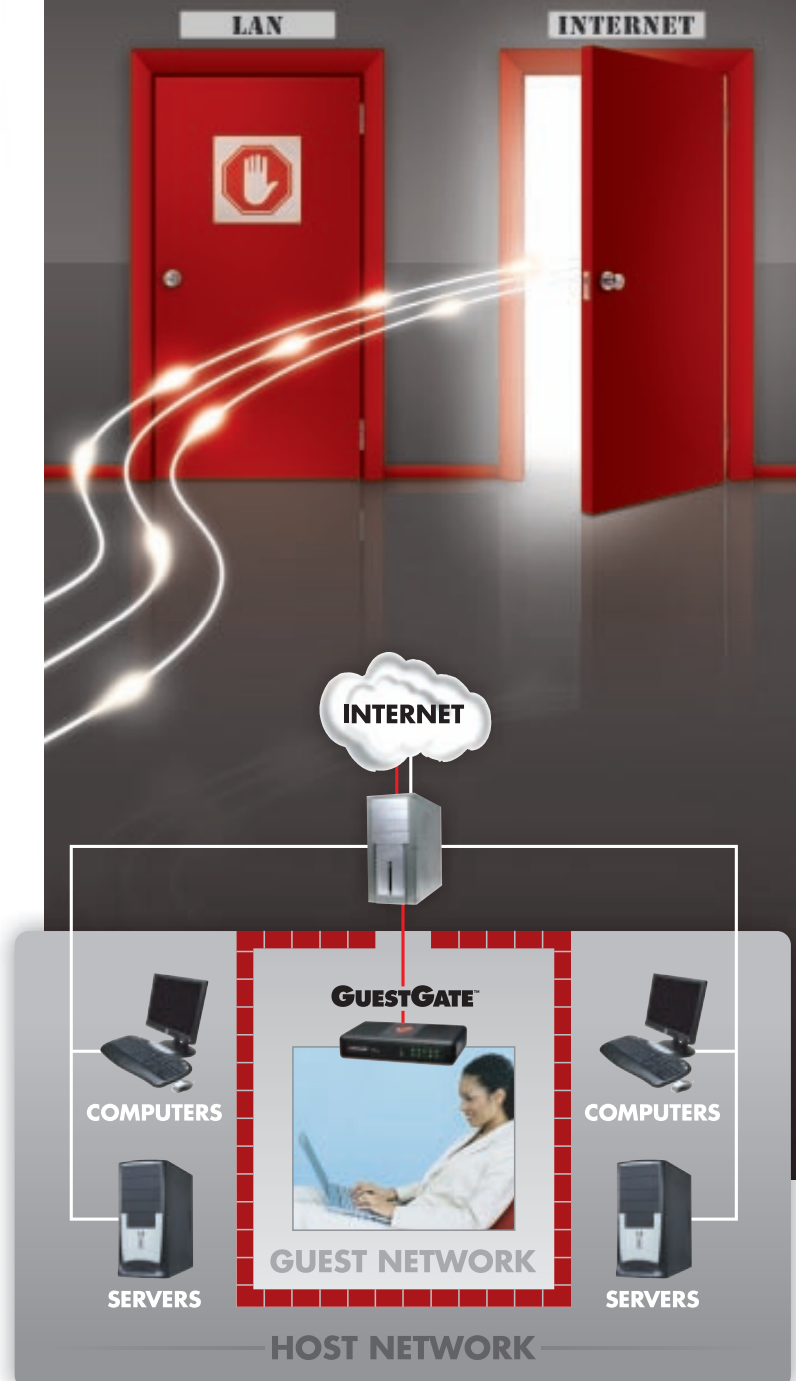


Features

- Provides instant guest access to the public network
- Host Network Protection (HNP) technology protects the host network from guests
- IP Plug and Play for configuration-free client operation
- No configuration required, GuestGate automatically detects the network settings
- Additional setup functions can be performed by IT Administrator using Web-based User Interface
- Guest protection through Layer 3 Client Isolation technology (patent pending)
- Bandwidth Control (upstream & downstream)
- Password option for Internet access
- Packet filter for IP addresses, domains and TCP/IP service ports
- Customizable welcome page (banner/text changeable)
- Firmware upgrade through Web-based user interface
- Plug and Play experience for your guests

Model # **523240**

Provide Instant Internet Access for Your Guests While Keeping Your Network Secure



For more information on this exclusive patent-pending opportunity, including detailed case studies, configurations, FAQs, news coverage, and more, visit:

www.GuestGate.com

Now you can easily accommodate the Web-access needs of any visitor or guest to any networked office or business location. No more last-minute LAN configuration requests to the IT administrator, and no need to even consider expensive alternative solutions. Simply install the INTELLINET NETWORK SOLUTIONS GuestGate Internet Access Device, and your visitors will be able to access the Internet from your conference room, offices or other places of business without compromising the security of your network.



Easy Access, Installation & Configuration

Using GuestGate, there is no longer a need for your visitors to "reconfigure" their notebook computers in order to access the Internet through your network – simply log-in using the company-provided user name and password. GuestGate automatically adjusts to the guest computer's TCP/IP settings, making it a snap for your IT organization to accommodate your guests who need to access the Internet. It also detects the host network's setting, and in most cases automatically configures the Internet access!

Protect Your Private Network

Using the INTELLINET NETWORK SOLUTIONS proprietary Host Network Protection™ (HNP) technology, GuestGate prevents clients from seeing the host network, while at the same time allowing them access to the public Internet. Special privileges, such as access to specific servers and printers, can easily be configured as needed, while still providing host network protection. For added protection to your network, you can choose to assign your visitor a password and require it for access to the Internet. You can even limit the amount of bandwidth allowed to the guests, further ensuring that your network is not impacted by your additional users.

Protect Your Guests' Computers

Your visitors can rest assured that the security of their notebook computers will not be compromised by other "strangers"; i.e., other guests you may have visiting and accessing your network at the same time. This innovative device protects your GuestGate users by assigning different random networks to each client. This unique "Client Isolation" capability is provided through the patent pending Layer 3 Client Isolation technology, and ensures that no connection between guest computers can be established (even if they are connected via a wireless access point). If that were not enough, GuestGate also protects the guest computers from unauthorized access through the Internet, helping to prevent their computer from being attacked while connected to the Internet through your LAN.

Provide a Professional Environment

GuestGate allows you to provide your own company welcome screen, which can be used as customized advertising for guests to see as they log in. Use this option to define terms and conditions, including any liability disclaimers, requiring your guests to agree before they proceed, and best of all, putting them at ease by letting them know the Internet access you are providing is safe and secure.

Lifetime Warranty

Strict manufacturing standards ensure the highest quality in all INTELLINET NETWORK SOLUTIONS products. All items carry a full Lifetime Warranty - the strongest quality commitment anyone can make.

GUESTGATE™

Internet Access Device

With the GuestGate Internet Access Device, the possibilities are unlimited. No vertical market is beyond reach, but here are 11 examples of how the GuestGate can be applied:

Business Services

Any business office with guests or visitors should consider GuestGate. Conference rooms, lobbies and other waiting areas, for example, can be connected to the Web so outsiders can easily pull up online information relevant to meetings and presentations – in addition to making time productive when waiting or on breaks (e.g., guests can easily access their e-mails, for example, from their own laptops and other mobile computers).

Education and Training

Universities, public schools, training centers and other learning center campuses are ideal for GuestGate. What learning environment wouldn't benefit from Web access, where most students today typically look first when conducting research?

Financial Services

CPAs, financial planners and stock brokers all represent a unique opportunity for GuestGate installations. Independent client access to the Internet can provide an added level of confidence and decision support in these environments.

Food & Beverage

With GuestGate, restaurants and bars can cost-effectively cater to mobile computer users while controlling Web access in ways that best suit these establishments. Draw and retain clientele with a variety of related promotions.

Government

The public sector is rife with opportunity for GuestGate on state, local and federal levels. From municipal offices to DMV locations and public libraries, visitors and guests will all appreciate the convenience and value of Web access. GuestGate security controls make it an ideal choice for a multitude of government agency installations.

THE INTERNET ACCESS DEVICE THAT THRIVES IN ANY VERTICAL MARKET APPLICATION

Healthcare

As with government agency installations, GuestGate security represents a key advantage, enabling compliance with HIPAA regulations while giving patients and their family members Web access for a variety of needs. From waiting rooms to overnight stays, GuestGate takes away the pain of being disconnected from the Internet without the headaches and costs of other types of installations.

Hospitality

Guests today want – or demand – convenient Internet access. With GuestGate, hotels, motels, B&Bs, resorts, RV parks and even campgrounds can now give (or charge for) fast, convenient, cost-effective access to the Web.

Legal

Police stations and courthouses as well as corresponding businesses can now give secure Web access to anyone who needs it. Lawyers and their clients often have a desire to go on the Internet without the hassles and inconveniences of other approaches. With GuestGate, the secure solution is at hand.

Manufacturing

Suppliers and other representatives will find it even more desirable and productive to do business with manufacturers providing GuestGate access to the Web. No more time-consuming custom configurations. With GuestGate, the installation is fast, easy and cost-effective.

Retail

Whether a hair salon, repair shop or other type of retail location where clients must often wait long periods of time, GuestGate allows them to pass the time in a productive and valuable manner. Forget magazines. Give them Web access.

Transportation

Airport and bus terminals, marinas, train stations, subways, and other transportation hubs all benefit from GuestGate Web access. It's the easiest and most cost-effective way to make the Internet readily available to busy travelers.

GuestGate Secures Police Station and Attorney Office Connections

After the IT administrators at the South Berwick, Maine, police station installed GuestGate within their facility, visitors and their staff of about 20 officers received immediate, convenient and secure access to the Internet at a fraction of the cost to traditional solutions.

And then there's New Hampshire Legal Services, a large agency that assists the state's low-income population. Their offices utilize GuestGate for its visiting attorneys. Besides eliminating security concerns related to the host network, GuestGate's Layer 3 Client Isolation technology also prevents guest computers from establishing connections with each other, ensuring greater security for these systems as well.



"GuestGate is a great way to break the ice with a potential client and get into many new markets. Savvy business people understand the importance of offering guests access to the Internet, and GuestGate lets any business do that safely and affordably."

Lyle McIntire

Director of Network Solutions
2-Way Communications
Service, Inc. (Newington, NH)

GuestGate Upgrades Waiting Room Options

Staff members of the Dallas Endoscopy Center, a BioLogix client that utilizes GuestGate, encourage patients to enjoy the Internet at their office. Patients often wait for hours in medical facilities before and after meeting with physicians and technicians. Access to the Web allows clients to relax. GuestGate users enter a temporary password before accessing the Internet and immediately obtain online access. Bandwidth control is available to the facility providing GuestGate.

GuestGate also ensures total security for visitors' computers by restricting connections between guest users, provided through Layer 3 Client Isolation technology. And mobile users do not have to change their IP settings. GuestGate automatically makes the host network compatible with the guest computer.



"Just about every client we have with a waiting room expresses interest in GuestGate... Before this new product, the expense didn't justify the convenience. Now there's a paradigm shift. GuestGate makes secure guest access affordable, so everybody wants to provide this service to their customers."

Chuck Colley

President
BioLogix, Inc. (San Antonio, TX)

GuestGate lets Business Owners Cater to Mobile Users

A laptop is a staple for most recreational vehicle travelers. These open-road tourists like to stay connected. Campgrounds may offer visitors Internet access options, but they're often inconvenient or expensive. Some facilities direct guests to a clubhouse for pay-to-plug-in access, or provide telephone numbers of broadband providers that will wire Internet access to a campsite for a hefty price.

Seasons in the Sun Motorcoach Resort, of Titusville, Fla., is the exception. Upon arrival, park guests learn that they can access the Web via GuestGate, which guarantees secure wireless Internet access throughout the park. GuestGate prevents any connection between visitors' laptops via its Layer 3 Client Isolation technology. The product's bandwidth throttling option allows park management to ensure smooth Web surfing for everyone.



"So many companies have their IT guys spend hours provisioning user names, passwords and guest codes so visitors can access an internal network..."

GuestGate eliminates all that. You plug it in and connect it to the network. That's about it. Everyone I show this to says the same thing - 'Wow.'"

Marvin Lange

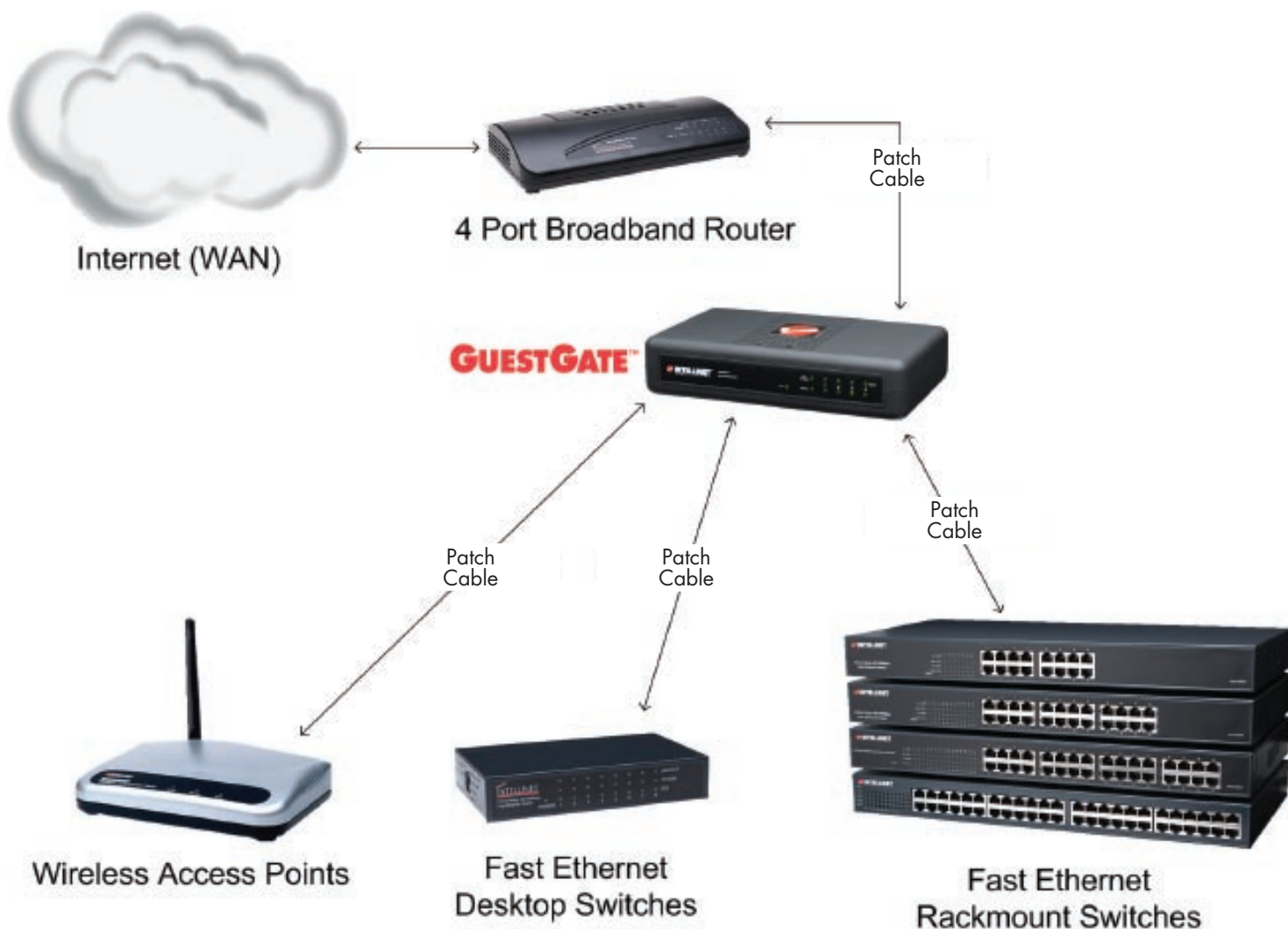
Owner
Comtek Computers
(Cocoa, FL)



CROSS-SELLING WITH GUESTGATE

One of our strongest value propositions is the ability to provide you, the independent reseller, with a complete solution that you, in turn, can provide to your customers. This is done through cross-selling, which contributes significantly to revenue while strengthening your client relationships.

The diagram below illustrates GuestGate in a typical configuration, including several of the complementary devices that can be incorporated for a complete solution. And remember, one of your most important advantages is being able to meet customers' needs entirely with INTELLINET NETWORK SOLUTIONS products, all covered under our Lifetime Warranty.



Note: To assure full functionality during even the highest user peak time, we recommend a maximum of 100 users per GuestGate unit.

Some examples of products to propose in conjunction with GuestGate:

Broadband Routers Page 32

- 523608** High Speed Broadband Router
- 523462** ADSL2+ Broadband Modem Router

Wireless Access Points Page 24

- 501903** Wireless G Access Point
- 522755** Wireless Super G Access Point

Fast Ethernet Rackmount Switches Pages 38-40

- 520409** 16 Port
- 520416** 24 Port
- 520423** 32 Port
- 522618** 48 Port

Fast Ethernet Desktop Switches Pages 35-37

- 523301** 5 Port, Desktop, Metal
- 523646** 5 Port, Compact, Plastic
- 523318** 8 Port, Desktop, Metal
- 523653** 8 Port, Compact, Plastic
- 522595** 16 Port, Desktop, Metal,
- 521970** 16 Port, Desktop, Metal

www.GuestGate.com

COMING 1ST QUARTER 2008!

Wireless N Networking Products:

Wireless N Router – Model 523967

802.11n Draft 2.0 Compliant, 300 Mbps,

Wireless N USB Adapter – Model 523974

802.11n Draft 2.0 Compliant, 300 Mbps

Wireless N PCI Card – Model 523981

802.11n Draft 2.0 Compliant, 300 Mbps



These products comply with the latest specification, 802.11n Draft 2.0, offering higher throughput than existing wireless products, and providing greater distance coverage as well. They are backward compatible with previous wireless technology, like 802.11g and 802.11b, and can be installed into existing networks without concern for compatibility or interoperability.

Higher Speed Throughput

Boasting a data transmission rate of up to 300 Mbps, these products are ideal for streaming video and other high bandwidth intensive applications.

Multi-vendor Compatible

All three of these products are 802.11n Draft 2.0 compatible, meaning they will operate with other vendors' Wireless N products, that are 802.11n Draft 2.0 Certified. This is critical because as PCs and laptops start shipping with Wireless N adapters in them, and as Internet Service Providers start shipping 802.11n routers to their customers you need to know that your products will not only interoperate without problems, but that they will also deliver maximum performance.

Greater Distance Coverage

The 802.11n Wireless standard includes the use of MIMO technology, already proven to deliver better coverage distance than previous 802.11g, b, a, and Super G. Not only do you get longer distance coverage, but the versatile MIMO antenna technology improves wireless connectivity in environments with thick walls, cordless phones, and other forms of interference.

Although Wireless [Pre] N products have been in the market for over a year now, it was not until June 26th, of this year that the Wi-Fi Alliance finalized their Wi-Fi 802.11n, Draft 2.0 certification test plan. Compliance to the test plan ensures a product's interoperability with other Wi-Fi devices in the consumer and enterprise markets.

"We expect a rapid market acceptance of wireless products running 802.11n because of their ability to stream video between devices," says David Surber, vice president of engineering for TÜVRheinland. "We are proud to be one of the first labs authorized by the Wi-Fi Alliance to perform 802.11n testing, enabling our clients worldwide to meet that market demand."

You can be sure that all INTELLINET NETWORK SOLUTIONS Wireless N products will be compatible and interoperate with other 802.11n Draft 2.0 wireless products.

Customers need your help to decide when to go wired and when to go wireless. You know how to help them determine what is best for them, based on their specific requirements. Whether they need to transfer data at gigabit speeds, or have the freedom to work from any location in the home or office, you need to have the right solution to help your customers solve their unique needs.

When you choose to propose wireless, you can rest assured that the INTELLINET NETWORK SOLUTIONS line of Wireless Networking products includes all the components necessary for you to select the right combination for your customers and prospects:

Technology/Products	Benefits
Super G Technology	High speed throughput.
MIMO Turbo G Technology	Extended range coverage.
Wireless Access Points	Seamless integration with wired and wireless environments.
Wireless Routers	Convenient access to wireless and wired networks with built-in multi-port LAN switch and many more features and functions.
Wireless USB Adapters	Flexible enough to use for either notebook computers or desktop computers, or both.
Wireless PC and PCI Cards	Tailored for specific needs as required.
Antennas	Enhance building to building applications and optimize internal configurations for extended range and environmental obstructions.

Most of the products are available in multiple wireless technologies, allowing you to pick the right building blocks to design your customers' solution. They are all backward compatible, allowing your customers to preserve existing investments while moving forward with the newest technology.

WIRELESS SPECIAL FEATURES

Feature	Wireless G	Wireless Super G	MIMO Wireless Turbo G
Speed	<ul style="list-style-type: none"> ✓ Link speeds at up to 54 Mbps ✓ Actual throughput at up to 20 Mbps 	<ul style="list-style-type: none"> ✓ Link speeds at up to 108 Mbps ✓ Actual throughput at up to 60 Mbps 	<ul style="list-style-type: none"> ✓ Link speeds at up to 54 Mbps ✓ Actual throughput at up to 35 Mbps
Coverage	<ul style="list-style-type: none"> ✓ Indoor: Up to 328 feet (100 meters) ✓ Outdoor: Up to 984 feet (300 meters) 	<ul style="list-style-type: none"> ✓ Indoor: Up to 328 feet (100 meters) ✓ Outdoor: Up to 984 feet (300 meters) 	<ul style="list-style-type: none"> ✓ Up to 10X Coverage of Wireless G and Wireless Super G ✓ Unaffected by cordless phones and other interference



WIRELESS ROUTERS

Wireless G Broadband Router

- Up to 54 Mbps network data transfer rate
- Compatible with all 802.11b & g wireless products
- Supports WEP and WPA (TKIP and AES) data encryption
- Integrated 10/100 Mbps LAN switch with Auto MDI/MDIX support
- Easy Internet setup through WAN connection wizard
- DHCP server assigns IP addresses for all LAN users
- Supports virtual server, port forwarding and DMZ (demilitarized zone)
- VPN server (PPTP) supports five connections simultaneously
- Supports QoS (Quality of Service) bandwidth management
- Integrated anti-DOS firewall
- Content control through URL and domain filter
- Easy installation through Web-based user interface

523431



**3x Range
with High-Gain
Directional Antenna
(500449)**

Page 28



Wireless G Broadband Travel Router **NEW**

- Compact design, great for traveling
- Up to 54 Mbps network data transfer rate
- Compatible with all 802.11b & g wireless products
- Supports WEP, WPA, WPA2 and IEEE 802.1x
- DHCP server assigns IP addresses for all LAN users
- Supports virtual server and DMZ (demilitarized zone)
- Easy installation through Web-based user interface

523875

Wireless Super G Router

- 108 Mbps network data transfer rate
- Fully IEEE 802.11g and 802.11b standards compliant
- Built-in 4-Port Fast Ethernet LAN Switch
- Anti-DOS Firewall
- Dual antennas for enhanced coverage (one internal and one external)

502566



MIMO Wireless Turbo G Router

- Shares one Internet connection with multiple wireless or wired clients
- MIMO XR technology for enhanced wireless coverage
- Enhanced 802.11g/b Performance with 4 Port 10/100 Switch and QoS
- PacketOVERDRIVE Turbo Mode technology for enhanced wireless throughput
- Two 5 dBi antennas for superior signal reception
- One 5 dBi antenna for high power signal transmission
- 54 Mbps network data transfer rate

502207



Wireless ADSL 2+ Broadband Modem Router

- 802.11g router with integrated ADSL2+ modem
- Supports 24 Mbps ADSL2+ downstream data rate
- Supports all common ADSL standards, including ADSL2/ADSL2+ for Annex A
- Up to 54 Mbps wireless network data transfer rate
- Compatible with all 802.11b & g wireless products
- Supports WEP and WPA/WPA2 (TKIP and AES) data encryption
- Integrated 10/100 Mbps LAN switch with Auto MDI/MDIX support
- DHCP server assigns IP addresses for all LAN users
- Supports virtual server, port forwarding and DMZ (demilitarized zone)
- Supports VPN pass-through (IPSec, PPTP, L2TP)
- Integrated anti-DOS firewall
- Content control through URL and domain filter
- Supports SNMP management
- Easy installation through Web-based user interface

523455



WIRELESS ACCESS POINTS

High Power Wireless G Access Point

- IEEE 802.3af-compliant PoE-powered device with one PoE (PD) port
- Strong 23 dBm output power rating
- Two LAN ports (PD port plus Ethernet port to cascade access points)
- Supports Wireless Distribution System (WDS), Bridging, Client and Repeater modes
- Supports WEP, WPA/WPA2 data encryption and client access control
- Up to five times faster than 802.11b: 54 Mbps link speed
- Compatible with all 802.11b & g wireless products
- Acts as DHCP server or DHCP client
- Easy Web-based management

503082


**3x Range
with High-Gain
Directional Antenna
(500449)**

Page 28

Wireless G Access Point

- Up to 5 times faster than 802.11b
- Up to 54 Mbps network data transfer rate
- Compatible with all 802.11b & g wireless products
- Supports Wireless Distribution System (WDS) repeater mode
- Robust wireless LAN security
- Simple Web configuration

501903


**3x Range
with High-Gain
Directional Antenna
(500449)**

Page 28



Wireless Super G Access Point

- Connects a wireless network to a traditional wired network
- 10/100 Mbps Fast Ethernet port
- Allows for greater distance between wireless PCs
- 10 times faster than 802.11b wireless
- Backward compatible with all 802.11b and g wireless products
- Simple web based configuration
- LEDs for power, speed, 802.11b/g
- Supports bridge mode
- Two detachable antennas

522755


HomePlug Turbo Wireless G Access Point

- Wireless G Access Point using the AC power line as the network backbone
- HomePlug 1.0 Turbo compliant, 85 Mbps link speed
- Integrated 10/100 Mbps LAN switch with Auto MID/MDIX support
- Range up to 200 m over the power line
- Compatible with all 802.11b & g wireless products
- Robust wireless LAN security
- Easy installation through web-based user interface
- Firmware updates via Web-based user interface

550215


Double Play! Match Your WAP Technology with Secure Internet Access for Visitors

GuestGate Internet Access Device

- Supports wireless connectivity when used with wireless access points or wireless routers
- Provides instant guest access to the public network
- Protects the private network from guests
- Initial setup performed by IT administrator using web-based user Interface
- Guest protection through Layer 3 Client Isolation technology (patent pending)
- No additional setup for new guests
- Plug and Play

523240

**Instant, secure
wireless guest access
to the public network**



www.GuestGate.com

WIRELESS USB ADAPTERS

Wireless G USB Adapter

- Connects your notebook or PC to a wireless network
- Up to 54 Mbps network data transfer rate
- Compatible with all 802.11b & g wireless products
- Supports WPA, WEP and AES security
- Windows 98SE/2000/Me/XP compatible

521499

Extended Range Wireless G USB Adapter

- 802.11g, 54 Mbps
- Up to 6 times the range of other wireless USB adapters
- Up to 54 Mbps network data transfer rate
- Compatible with all 802.11b & g wireless products
- 64/128-bit Wired Equivalent Privacy (WEP) data encryption
- Windows 98SE/2000/Me/XP compatible

501545

**Extend Wireless
Range 800 m
(2,624 ft.)**

**Up To
6x Range!**

Combines the functionality of
Wireless G USB adapter with
a Panel Directional Antenna!

Wireless Super G USB Adapter

- Connects your notebook or desktop PC to a wireless network
- Super G wireless technology for enhanced wireless throughput
- 108 Mbps network data transfer rate
- Built-in antenna
- Increased security with 802.1x and WPA
- Windows 2000/XP compatible

501699

MIMO Wireless Turbo G USB Adapter

- Connects your desktop PC or notebook to a wireless network
- MIMO XR technology for enhanced wireless coverage
- PacketOVERDRIVE Turbo Mode technology for enhanced wireless throughput
- Supports WEP (64/128 bit), WPA and WPA2 data encryption
- Supports Software AP function (turns your wireless client into a wireless access point)
- 2 antennas (1 x internal and 1 x external)
- 54 Mbps network data transfer rate
- Windows 98SE/Me/2000/XP/2003

502887

WIRELESS PC CARDS

Wireless G PC Card

- Connects your notebook to a wireless network
- Up to 54 Mbps network data transfer rate
- Compatible with all 802.11b & g wireless products
- Supports WPA, WEP and AES security
- Windows 98SE/2000/Me/XP compatible

505314

Wireless Super G PC Card

- Connects your notebook PC to a wireless network
- Super G wireless technology for enhanced wireless throughput
- 108 Mbps network data transfer rate
- Integrated dual diversity antenna for enhanced wireless connectivity
- Increased security with 802.1x and WPA
- Windows 98SE/Me/2000/XP compatible

501668

MIMO Wireless Turbo G PC Card

- Connects your notebook PC to a wireless network
- MIMO XR technology for enhanced wireless coverage
- PacketOVERDRIVE Turbo Mode technology for enhanced wireless throughput
- Internal Smart Antenna with Two RX and One TX
- 54 Mbps network data transfer rate
- Windows 98SE/Me/2000/XP XP/ XP64, Mac OS and Linux

502184

WIRELESS PCI CARDS

Wireless G PCI Card

- Connects your desktop PC to a wireless network
- Up to 54 Mbps network data transfer rate
- Compatible with all 802.11b & g wireless products
- Detachable antenna for greater range
- Supports WPA, WEP and AES security
- Windows 98SE/2000/Me/XP compatible

500517

Wireless Super G PCI Card

- Connects your desktop PC to a wireless network
- Super G technology for enhanced wireless throughput
- 108 Mbps network data transfer rate
- Detachable 2 dBi Dipole Antenna
- Increased security with 802.1x and WPA
- Windows 98SE/Me/2000/XP compatible

501682

MIMO Wireless Turbo G PCI Card

- Connects your desktop PC to a wireless network
- MIMO XR technology for enhanced wireless coverage
- Packet-OVERDRIVE Turbo Mode technology for enhanced wireless throughput
- Two antennas for signal reception
- One antenna for high power signal transmission
- 54 Mbps network data transfer rate
- Windows 98SE/Me/2000/XP/ XP64, MacOS and Linux

502191

WIRELESS PRINT SERVERS

Wireless 1-Port USB Print Server

- Connects any USB printer to the network
- 10/100 Mbps Ethernet network port connection
- USB printer port connection

521567

Wireless 1-Port USB Multifunction Print Server

- Connects USB Multifunction Printers to the wireless network
- Supports scan, print, card reader, and fax functions over the network
- Supports 54 Mbps IEEE 802.11g Wireless with WEP encryption (64/128 bit) and WPA
- Includes 1 High Speed USB 2.0 Port
- Includes 1 10/100 Fast Ethernet LAN port
- Supports bi-directional communication with MFPs and printers

509015

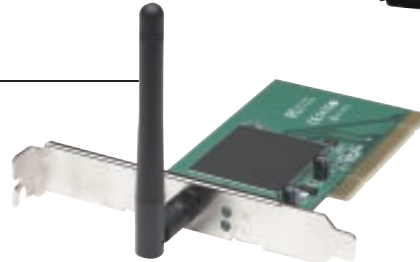
Wireless 1-Port Parallel Print Server

- Connects any parallel printer to the network
- Works with any Access Point or Peer-to-Peer Wireless Network
- Detachable Antenna (RP-SMA Connector)
- Go wired or wireless - Includes 10/100 Mbps Ethernet network port connection
- Parallel printer port connection

521482

3-Port Print Server (2 x USB, 1 x Parallel)

- Share up to 3 printers (2 USB and 1 Parallel) with all network users
- 10/100 Mbps Ethernet network port connection
- 2 USB printer port connections
- 1 Multi-protocol DB-25 printer port connection

501507


See page 33
for our full line
of Print Servers



OMNI-DIRECTIONAL ANTENNAS

Indoor Omni-Directional Antenna

- 5 dBi gain antenna
- Ideal for increasing wireless network range and speed
- RP-SMA female connector
- 360° horizontal and 29° vertical beam width
- For pole, wall and magnet mounting
- Length: 8 in.

502290



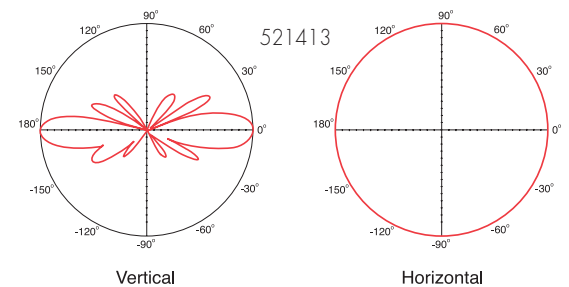
High-Gain Omni-Directional Antenna

- 8 dBi gain antenna
- Ideal for increasing wireless network range and speed
- Weatherproof and corrosion resistant
- N-type female connector
- 360° horizontal and 15° vertical beam width
- For pole and wall mounting
- Length: 2 ft.

521413



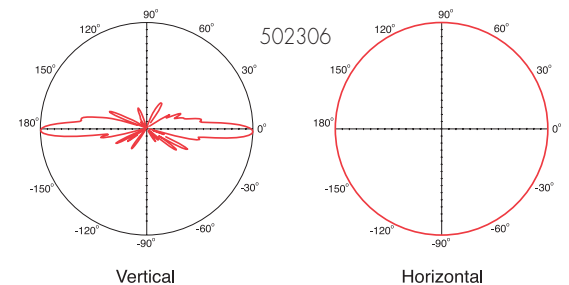
Coverage Patterns



High-Gain Omni-Directional Antenna

- 12 dBi gain antenna
- Ideal for increasing wireless network range and speed
- Weatherproof and corrosion resistant
- N-type female connector
- 360° horizontal and 7° vertical beam width
- For pole and wall mounting
- Length: 4 ft.

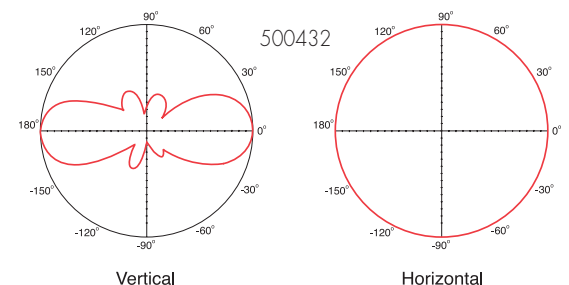
502306



High-Gain Omni-Directional Antenna

- 5 dBi gain antenna
- Ideal for increasing wireless network range and speed
- Weatherproof and corrosion resistant
- N-type female connector
- 360° horizontal and 27° vertical beam width
- For pole and wall mounting
- Length: 13 in.

500432



DIRECTIONAL ANTENNAS



Increase the range of your wireless connection

Indoor Hi-Gain Directional Antenna

- Eliminate weak and dead spots in any wireless network
- 6 dBi gain antenna extends wireless transmission distance
- 2.4 GHz frequency range
- 100 cm (40 in.) cord
- RP-SMA female connector is compatible with most wireless access points and network adapters
- 80° horizontal and vertical beam width

501538



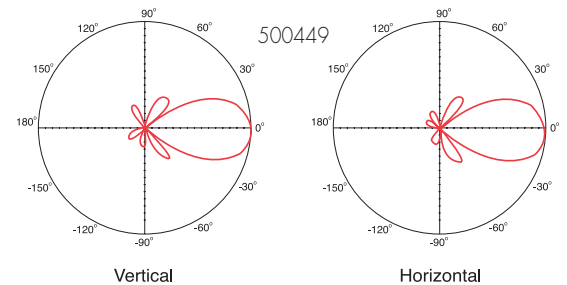
High-Gain Panel Directional Antenna

- 14 dBi gain antenna
- Ideal for building-to-building wireless connections
- Weatherproof and corrosion resistant
- N-type female connector
- 33° horizontal and 32° vertical beam width
- Includes 45 cm (1.5 ft.) cable
- For pole and wall mounting

500449



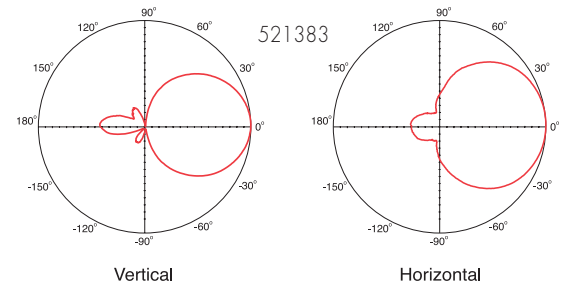
Coverage Patterns



High-Gain Panel Directional Antenna

- 9 dBi gain antenna
- Ideal for building-to-building wireless connections
- Weatherproof and corrosion resistant
- N-type female connector
- 45° horizontal and vertical beam width
- Includes 45 cm (1.5 ft.) cable
- For pole and wall mounting

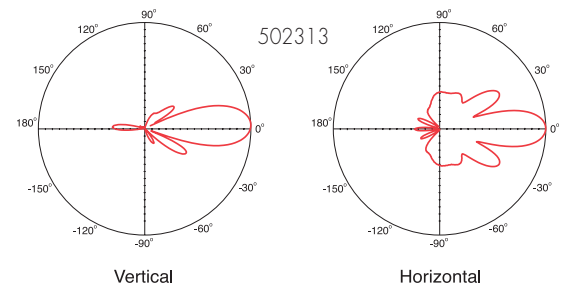
521383



High-Gain Panel Directional Antenna

- 18 dBi gain antenna
- Ideal for building-to-building wireless connections
- Weatherproof and corrosion resistant
- N-type female connector
- 18° horizontal and vertical beam width
- Includes 45 cm (1.5 ft.) cable
- For pole and wall mounting

502313



ANTENNA CABLES

LMR200 Antenna Cable

- N-type Male/RP-SMA Male, .19 dB loss per ft.

522137 6 ft

522144 10 ft

522175 25 ft



Low-Loss LMR400 Antenna Cable

- N-type Male/Male, .08 dB loss per ft.

521680 25 ft

522113 50 ft

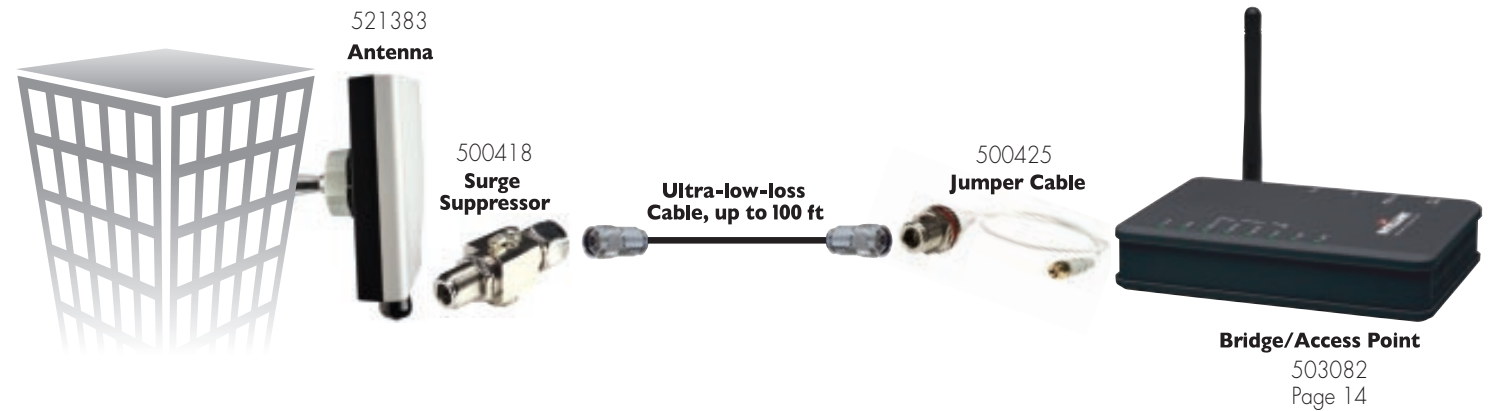
522120 100 ft



Ultra-Low-Loss LMR600 Antenna Cable

- N-type Male/Male, .04 dB loss per ft.

500401 100 ft



ANTENNA ADAPTERS

Antenna Surge Arrestor

- N-Type

500418



Antenna Cable Adapter

- N-type Jack to RP-SMA Plug Jumper Cable, 1 ft

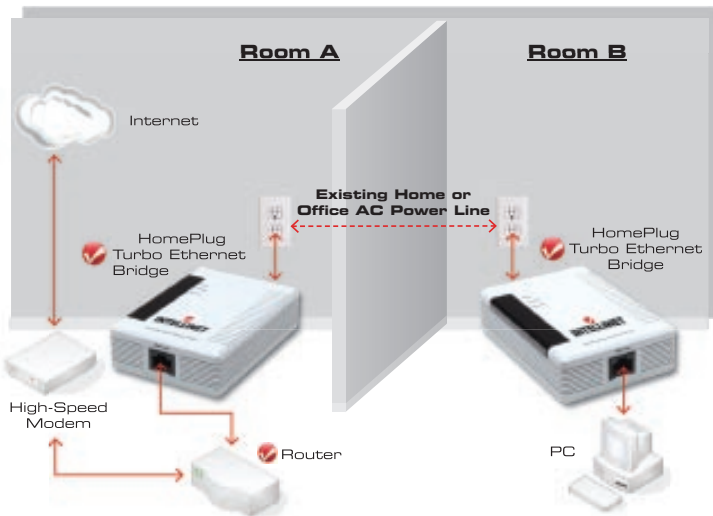
500425



HOMEPLUG POWERLINE

Create a high-speed network in your home or office.

The INTELLINET NETWORK SOLUTIONS HomePlug products allow you to create a high-speed computer network in your home or office. Simply plug the bridges into any electrical outlet, and you immediately create a network using the existing AC power lines. This technology is ideal when using network patch cable or wireless technology is not practical. Think of it as "Ethernet over Power", as the data is transmitted over the AC power lines.



Ideal For:

- High Definition (HD) and Standard Definition (SD) video distribution
- TV over IP (IPTV)
- Backbone for WiFi, UWB and Wireless USB
- Higher data rate broadband sharing
- Shared broadband internet access
- Audio and video streaming and transfer
- Expanding the coverage of wireless LANs
- Voice Over IP (VoIP)
- PC files and applications sharing
- Printer and peripheral sharing
- Network and online gaming
- Security cameras

HOMEPLUG STARTER KITS

We have added "starter kits" for each of the HomePlug Ethernet Bridges, making it more convenient to "get started" since you need at least two of these products to network through the AC power line. Each starter kit includes two HomePlug Ethernet Bridges.

HomePlug AV Ethernet Bridge Starter Kit

- Includes two HomePlug AV Ethernet Bridges (model 503273) and two Ethernet Network Cables
- 503280**

HomePlug Turbo Ethernet Bridge Starter Kit

- Includes two HomePlug Turbo Ethernet Bridges (model 502641) and two Ethernet Network Cables
- 503297**



HomePlug AV Ethernet Bridge

- The latest generation of Powerline technology with higher throughput and enhanced security
- Network computers through existing AC power lines
- Transparently connects Ethernet devices through the electrical system in your home or office
- Expand your network by adding HomePlug AV Ethernet Bridges
- HomePlug AV compliant
- Can co-exist with HomePlug 1.0
- QoS to prioritize your important traffic
- Plug and Play (no drivers required)
- Secure data through 128-bit encryption
- Includes Windows configuration utility

503273



The Homeplug AV Ethernet Bridge is not compatible with the HomePlug Turbo Ethernet Bridge, but the two products can co-exist on the same powerline network without interfering with one another.

HomePlug Turbo Ethernet Bridge

- Network computers through existing AC power lines
- Transparently connects Ethernet devices through the electrical system in your home or office
- Expand your network by adding HomePlug Turbo Ethernet Bridges
- HomePlug 1.0 Turbo compliant
- QoS to prioritize your important traffic
- Plug and Play (no drivers required)
- Secure data through 56-bit encryption
- Includes Windows configuration utility

502641



HomePlug Turbo Wireless G Access Point

- Wireless G Access Point using the AC power line as the network backbone
- HomePlug 1.0 Turbo compliant, 85 Mbps link speed
- Integrated 10/100 Mbps LAN switch with Auto MDI/MDIX support
- Range up to 200 m over the power line
- Compatible with all 802.11b & g wireless products
- Robust wireless LAN security
- Easy installation through web-based user interface
- Firmware updates via Web-based user interface

550215



Ideal for using the AC powerline to get around wireless deadspots. Simply install it in a "deadspot" area, and use the AC powerline to connect to the network backbone without having to run network cable. Now what was once a wireless deadspot becomes a "hotspot".

HomePlug Turbo Broadband Router

- Broadband router using the AC power line as the network backbone
- HomePlug 1.0 Turbo compliant, 85 Mbps link speed
- Integrated 10/100 Mbps LAN switch with Auto MDI/MDIX support
- Range up to 200 m (600 ft.) over the power line
- DHCP server assigns IP addresses for all LAN users
- Supports Virtual Server and DMZ (demilitarized zone)
- Supports VPN connections (PPTP, L2TP)
- Easy installation through Web-based user interface
- Firmware updates via Web-based user interface

550192



Ideal for Internet access using the AC powerline as the network backbone. The HomePlug Turbo Broadband Router is the perfect complement to our existing HomePlug Turbo Ethernet Bridge, and the two products are ideal for networking computers through the existing AC powerlines.

ADSL ROUTERS

ADSL2+ Broadband Modem Router

- Includes integrated ADSL2+ modem
- Supports 24 Mbps ADSL2+ downstream data rate
- Supports all common ADSL standards, including ADSL2/ADSL2+ for Annex A
- Integrated 10/100 Mbps LAN switch with Auto MDI/MDI-X support
- DHCP server assigns IP addresses for all LAN users
- Supports virtual server, port forwarding and DMZ (demilitarized zone)
- Supports VPN pass-through (IPSec, PPTP, L2TP)
- Integrated anti-DOS firewall
- Content control through URL and domain filter
- Supports SNMP management
- Easy installation through Web-based user interface

523462


Wireless ADSL 2+ Broadband Modem Router

- 802.11g router with integrated ADSL2+ modem
- Supports 24 Mbps ADSL2+ downstream data rate
- Supports all common ADSL standards, including ADSL2/ADSL2+ for Annex A
- Up to 54 Mbps wireless network data transfer rate
- Compatible with all 802.11b & g wireless products
- Supports WEP and WPA/WPA2 (TKIP and AES) data encryption
- Integrated 10/100 Mbps LAN switch with Auto MDI/MDI-X support
- DHCP server assigns IP addresses for all LAN users
- Supports virtual server, port forwarding and DMZ (demilitarized zone)
- Supports VPN pass-through (IPSec, PPTP, L2TP)
- Integrated anti-DOS firewall
- Content control through URL and domain filter
- Supports SNMP management
- Easy installation through Web-based user interface

523455


ADSL Modem Splitter/Filter

- Separates data from voice signals on telephone line
- Filter to eliminate interference on voice line caused by ADSL signal
- Easy to install

517317


WIRED ROUTERS

High Speed Broadband Router

- Easy Internet setup through WAN connection wizard
- Integrated anti-DOS firewall
- VPN server (PPTP) supports five connections simultaneously
- QoS (Quality of Service) bandwidth management
- Content control through URL and domain filter

523608 4-Port

523615 8-Port


Product Summary

Print Server	Model	USB Printer Ports	Parallel Printer Ports	Wireless	MFP Support
1-Port USB Multifunction Print	509039	1	–	–	✓
	509015	1	–	✓	✓
1-Port USB	521550	1	–	–	–
	521567	1	–	✓	–
1-Port Parallel	521475	–	1	–	–
	521482	–	1	✓	–
3-Port Parallel	520577	–	3	–	–
3-Port Combination (2 x USB, 1 x Parallel)	521574	2	1	–	–
	501507	2	1	✓	–

1-Port USB Multifunction Print Server

- Connects USB Multifunction Printers to the network
- Supports scan, print, card reader, and fax functions over the network
- Includes 1 Hi-Speed USB 2.0 Port
- Includes 1 10/100 Fast Ethernet LAN port
- Supports bi-directional communication with MFPs and printers
- Monitors important information such as ink levels and paper levels
- Supports TCP/IP, IPX/SPX, NetBEUI and AppleTalk network protocols
- Supports LPR, IPP, SMB/TCP, Raw Printing, and Unix Logical printing protocols.
- Supports Peer-to-Peer Printing (TCP/IP/IPX/NetBEUI/AppleTalk)
- Supports Server-based printing (Novell NetWare and Windows 98SE/Me/NT/2000/XP, NetWare (3.x above), MAC OS (9.x above) and Unix/Linux.

509039 Wired

509015 Wireless



1-Port USB Print Server

- Connects any USB printer to the network
- 10/100 Mbps Ethernet network port connection
- USB printer port connection
- Driver/software support for Windows 95/98/2000/Me/XP and NT, Novell and Linux
- Reset Button, LAN LED, Status LED, Ready LED
- Pocket size fits into portable tool kits

521550 Wired

521567 Wireless



1-Port Parallel Print Server

- Connects any parallel printer to the network
- 10/100 Mbps Ethernet network port connection
- Parallel Printer (Centronics 36) port connection
- Supports multiple networking protocols and operating systems
- LAN LED, Status LED, Ready LED
- Pocket size fits into portable tool kits
- Operating systems supported: Windows 95/98/Me Peer-to-Peer Printing, Windows NT/2000/XP, Netware, Unix/Linux, and MAC OS

521475 Wired

521482 Wireless



3-Port Parallel Print Server

- Connects any parallel printer to the network
- 10/100 Mbps auto-sensing Ethernet network port connection
- 3 multi-protocol DB-25 printer port connections
- Compatible with all major operating systems
- DHCP server/client, auto-detection
- Fault-tolerant upgrade
- Operating systems supported: Windows 95/98/Me peer-to-peer printing, Windows NT/2000/XP, Novell NetWare, MAC OS and Unix/Linux

520577



3-Port Print Server (2 x USB, 1 x Parallel)

- Share up to 3 printers (2 USB and 1 Parallel) with all network users
- 10/100 Mbps Ethernet network port connection
- 2 USB printer port connections
- 1 Multi-protocol DB-25 printer port connection
- Supports multiple networking protocols and operating systems
- Link Status LED
- Parallel Printer Status LED
- USB Status LED
- Operating systems supported: Windows 95/98/Me Peer-to-Peer Printing, Windows NT/2000/XP, Netware, Unix/Linux, and MAC OS

521574 Wired

501507 Wireless



Fast Ethernet PCI Network Cards

Fast Ethernet PCI Network Card

- Supports 10/100 speeds over Cat5e network cable
- Supports 32-bit PCI 2.1
- Full duplex speeds (20 Mbps, 200 Mbps)
- Auto-negotiation with next page capability
- Compatible to Windows 98/Me/2000/XP/XP64/Mac OS/Linux and NOVELL

509510 Realtek 8139 Chipset



Gigabit PCI Cards

Gigabit PCI Express Network Card

- Supports Gigabit speeds over existing network cable
- Does not require fiber optic cabling to run Gigabit speeds
- Supports both standard & Low Profile PCI card slots
- 1 Lane 2.5 Gbps PCI Express host interface
- Full duplex speeds (20 Mbps, 200 Mbps, 2000 Mbps)
- Auto-negotiation with next page capability
- Full duplex flow control (IEEE 802.3x)
- VLAN Tagging (IEEE 802.1Q)
- 8 kBytes transmit buffer and 64 kBytes receive buffer
- Marvell chipset
- Compatible to Windows 2000/XP/Vista and 2003 Server

522533

Gigabit PCI Network Card

- Supports Gigabit speeds over existing network cable
- Does not require fiber optic cabling to run Gigabit speeds
- Supports 32-bit PCI V2.2, 2.1, and 2.0, 33/66 MHz
- Full duplex speeds (20 Mbps, 200 Mbps, 2000 Mbps)
- Auto-negotiation with next page capability
- Full duplex flow control (IEEE 802.3x)
- VLAN Tagging (IEEE 802.1Q)
- 8 kBytes transmit buffer and 64 kBytes receive buffer
- Realtek chipset
- Compatible to Windows 2000/XP/MacOS and Linux

522328



Network PC Cards

Gigabit Ethernet PC Express Card

- Supports Gigabit speeds over existing network cable
- Does not require fiber optic cabling to run Gigabit speeds
- ExpressCard/34 device, fits in ExpressCard/54 and ExpressCard/34 slots
- Single PCI Express lane (x1) 2.5 Gbps interface
- TruePHY oversampling architecture for lower power consumption and better performance
- Full duplex speeds (20 Mbps, 200 Mbps, 2000 Mbps)
- Wake-On-LAN (WOL) support
- Agere chipset
- Compatible with Windows 2000, XP and 2003 Server

502788

Gigabit PC Card

- Built-in Gigabit RJ-45 port (no dongle required)
- Low power consumption for maximum battery life
- Fits any Type II or Type III PCMCIA slot
- Hot Swappable
- Full duplex speeds (20 Mbps, 200 Mbps, 2000 Mbps)
- Compatible to Windows 2000/XP/Vista and 2003 Server

150057

Fast Ethernet PC Card

- Built-in RJ-45 Port (no dongle required)
- Low power consumption for maximum battery life
- Fits any Type II or Type III PCMCIA slot
- Hot Swappable
- Full duplex speeds (20 Mbps, 200 Mbps)
- Compatible to Windows 9x/2000/XP/2003 Server/MacOS and Linux

520522

USB Ethernet Adapters

- Add a network connection without opening up your PC
- Perfect for both desktop and notebook computers
- Built-in USB cable
- Windows 98/Me/2000/XP

501262 USB 1.1

500913 High-Speed USB 2.0

502245 Hi-Speed USB 2.0 Gigabit Ethernet Adapter, Black



500913



501262



502245

FAST ETHERNET DESKTOP SWITCHES

Using advanced switching technology, the INTELLINET NETWORK SOLUTIONS Fast Ethernet Desktop switches will boost your network performance with much more than just full duplex data transfer and dedicated bandwidth. They feature non-blocking, wire-speed switching and can forward packets as fast as your network can deliver them. Also included are Address Learning and Aging to prevent data transfer errors and Data Flow Control to help prevent packet collisions. The 5 and 8 port compact sizes fit into any environment, and several units can be installed using the included rack mount brackets. No matter how intensive your network demands, the INTELLINET NETWORK SOLUTIONS Fast Ethernet Desktop switches use an advanced chipset that supports your needs with an affordable and efficient networking solution you can count on.



Product Summary

Description	Chassis Style (Metal or Plastic)	Barcode	Speed (Mbps)	Number of Ports	Buffer Memory	MAC Address Entries	VLAN Support	Number of Trunks	Mgmt. Type	Port Location (Front/Rear)
Desktop Smart Switch	M	523783	10/100	8 x RJ45	128 kBytes	1k	Yes	4	Web & Console	Front
	M	523790	10/100	16 x RJ45	192 kBytes	4k	Yes	8	Web & Console	Front
Metal Desktop Switch	M	523301	10/100	5 x RJ45	80 kBytes	2k	No	No	No	Rear
	M	523318	10/100	8 x RJ45	80 kBytes	2k	No	No	No	Rear
	M	522595	10/100	16 x RJ45	96 kBytes	2k	No	No	No	Rear
	M	521970	10/100	16 x RJ45	512 kBytes	8k	No	No	No	Rear
Plastic Desktop Switch	P	523646	10/100	5 x RJ45	128 kBytes	1k	No	No	No	Rear
	P	523653	10/100	8 x RJ45	128 kBytes	1k	No	No	No	Rear
Media Stream Switch	M	523493	10/100	5 x RJ45	128 kBytes	1k	Yes	1	No	Rear

FAST ETHERNET DESKTOP SWITCHES

Fast Ethernet Web-Smart Switch

- 10/100 Mbps auto-sensing Auto-MDIX RJ-45 ports automatically detecting optimal network speeds
- Configuration via Web browser
- Supports port-based VLAN and QoS
- Bandwidth control for all ports with 8 levels
- Broadcast storm control
- Supports MAC address port security

523783 8 Port

523790 16 Port

523783

523790



Fast Ethernet Office Switch

- 10/100 auto-sensing ports - automatically detect optimal network speeds
- Supports any combination of 10 Mbps or 100 Mbps network devices
- All RJ-45 ports with Auto-MDIX and NWay auto-negotiation support
- Store and forward switching architecture
- Full/half duplex operation
- Supports 2048 MAC address entries
- 96 kBytes buffer memory
- Compact metal case
- LEDs for power, link/activity, full/half duplex
- 10/100 Mbps and full/half duplex

523301 5 port

523318 8 port

522595 16 port, fits in 10" rack

522595



Fast Ethernet Office Switch

- 10/100 auto sensing ports
- automatically detects optimal network speeds
- Supports any combination of 10 Mbps or 100 Mbps network devices
- Compact Metal Case
- LEDs for Link Activity
- 10/100 Mbps and Half/Full Duplex
- NWay Auto-Negotiation
- Non-Blocking Design
- Store and forward switching architecture
- Supports 8000 MAC Address Entries
- 512 kBytes buffer memory

521970 16 Port

521970



FAST ETHERNET DESKTOP SWITCHES

Fast Ethernet Office Switch

- 10/100 auto-sensing ports - automatically detect optimal network speeds
- Supports any combination of 10 Mbps or 100 Mbps network devices
- All RJ-45 ports with Auto-MDIX and NWay auto-negotiation support
- Store and forward switching architecture
- Full/half duplex operation
- LEDs for power, link/activity
- Compact plastic case

523646 5 Port

523653 8 Port



Fast Ethernet Media Stream Switch

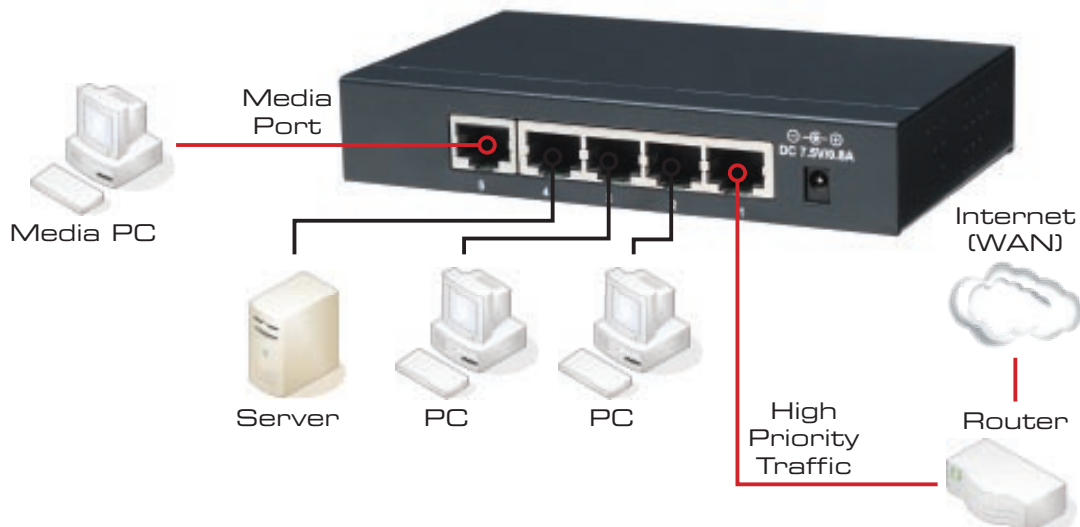
Avoid Playback Interruptions of Your Online Video

- Features one media port for high priority distribution of audio/video network traffic
- 10/100 auto-sensing ports - automatically detect optimal network speeds
- Supports any combination of 10 Mbps or 100 Mbps network devices
- All RJ-45 ports with Auto-MDIX and NWay auto-negotiation support
- Store and forward switching architecture
- Supports IGMP snooping, Broadcast Storm control and Multicast packet control
- Full/half duplex operation
- LEDs for power, link/activity
- Compact metal case

523493



The INTELLINET NETWORK SOLUTIONS Fast Ethernet Media Stream Switch Model 523493 is a 5-Port switch that includes one port specially designed to support audio and video over the network. Using IGMP (Internet Group Management Protocol) the communications protocol used for online video and gaming, the Media Stream Switch is able to prioritize the multimedia traffic on the network, helping to ensure the best possible performance for your online video applications.



FAST ETHERNET RACKMOUNT SWITCHES

INTELLINET NETWORK SOLUTIONS offers a complete line of reliable, affordable networking switches from high-performing wire-speed Layer 3 managed switches to entry-level managed Smart Switches to plug-and-play unmanaged switches for SMB and the Home. All INTELLINET NETWORK SOLUTIONS switches are standards based, fully-compatible with existing 10/100/1000 network infrastructure and easy to use and install.

Most of our rack-mountable LAN switches offer a wide range of interface options and support for Gigabit links. The INTELLINET NETWORK SOLUTIONS line of Small Form Factor Pluggable (SFP) GBIC transceiver modules supports industry standard SFP and GBIC interfaces and are compatible with third party vendor products. Simplified installation means they are ideal for end-users and technicians.

Product Summary

Description	Chassis Style (R = Rackmount)	Barcode	Speed (Mbps)	Number of Ports	Buffer Memory	MAC Address Entries	VLAN Support	Number of Trunks	Mgmt. Type	Port Location (Front/Rear)
Managed Layer 3 Access Switch	R	523868	10/100	24 x RJ45	32 MBytes	16k	256	32	Web Console SNMP	Front
			1000	4 x Combo						
Smart Switch, 2 x Gigabit	R	500456	10/100	24 x RJ45	320 kBytes	8k	26	7	Console	Front
			1000	2 x RJ45						
Smart Switch	R	520317	10/100	16 x RJ45	512 kBytes	8k	16	1	Console	Front
				1 x Fiber ST or SC						
	R	520331	10/100	24 x RJ45	512 kBytes	8k	16	1	Console	Front
				1 x Fiber ST or SC						
Fast Ethernet Switch	R	523929	10/100	24 x RJ45	320 kBytes	8k	No	No	No	Front
				2 x Gigabit SFP Combo						
	R	520409	10/100	16 x RJ45	512 kBytes	2k	No	No	No	Front
	R	520416	10/100	24 x RJ45	320 kBytes	8k	No	No	No	Front
	R	520423	10/100	32 x RJ45	1 MBytes	4k	No	No	No	Front
	R	522618	10/100	48 x RJ45	256 kBytes	8k	No	No	No	Front

FAST ETHERNET RACKMOUNT SWITCHES



Managed Layer 3 Access Switch

- 24 10/100 Mbps auto-sensing Auto-MDIX RJ-45 ports
- 4 Gigabit (RJ-45 + SFP) combo ports
- RS-232 console port for Telnet access
- Configuration via Web browser or Telnet
- SNMP Management and Remote Monitoring (RMON)
- SNMP V1, V2C, V3 with RMON groups 1, 2, 3 & 9
- Routing functions include Static route, RIPv1/v2, OSPF, DVMRP, PIM-DM and VRRP
- Supports 4k host entries for Layer 3 IP switching
- Support 16k LPM (Longest Prefix Match) table entries
- Packet filtering/forwarding rates: 1,488,000 pps (1,000 Mbps), 148,800 pps (100 Mbps), 14,880 pps (10 Mbps)
- Loss-of-link management on fiber ports
- Supports portbased and tag-based VLAN
- Provides 32 trunk groups of up to 8 member ports per trunk
- Supports Port Mirroring
- Broadcast storm control
- Supports per-port Egress/Ingress rate control
- Supports Spanning Tree, Rapid Spanning and Multiple Spanning Tree Protocol
- GVRP VLAN Registration Protocol

- DHCP Relay
- LACP Link Aggregation
- IGMP Snooping for multicast filtering
- Supports multicast routing DVMRP, PIM-DM
- Supports Virtual Router Redundancy Protocol (VRRP)
- Supports QoS with 8 priority queues
- QoS Supports 802.1p, WRR, Strict Scheduling Priority Queue, Bandwidth Management
- Supports 802.1X EAP and RADIUS Authentication
- Access Control List (Layer 2, 3, 4 and 7)
- Supports jumbo frames up to 9 kBytes
- Supports NWay Auto-Negotiation
- Store and forward switching architecture
- Full/half duplex operation
- Supports 802.3x flow control for full duplex mode and collision-based back pressure for half duplex mode
- Supports up to 16384 MAC address entries
- 32 MBytes buffer memory
- Redundant integrated power supply
- Includes 19" rackmount brackets

523868

**Go to page 44
for a list of available
SFP Modules**

Fast Ethernet Rackmount Web-Smart Switch with 2 Gigabit Ports

- 24 10/100 auto-sensing Auto MDIX ports automatically detect optimal network speeds, full and half duplex mode
- Two RJ-45 Gigabit Auto MDIX ports (10/100/1000 auto sensing, full duplex)
- Port settings include auto-negotiation, speed, half and full duplex mode
- Supports bandwidth control per port
- Supports VLAN (26 groups) and trunking (7 groups)
- Supports Quality of Service (QoS) with 2 priority levels
- Supports up to 8,000 MAC address entries
- 320 kBytes buffer memory
- Configuration via Web browser or RS232 console port

500456



Fast Ethernet Rackmount Smart Switch with Optional Fiber Ports

- 10/100 Auto Sensing Full/Half Duplex ports
- Supports up to 8000 MAC Address entries
- 512 kBytes buffer memory
- Standard 19" rackmountable
- Supports Trunking/VLAN
- Console port for configuring
- Regulate auto-negotiating on individual ports, each port can be set to 10, 100, Half Duplex, Full Duplex, or Full Auto
- Optional Modules for fiber optic connections

520317 16 Port

520331 24 Port



520317

ST Module for 520317/520331

- Fiber optic module
- Supports ST connectors

500487



SC Module for 520317/520331

- Fiber optic module
- Supports SC connectors

500470



FAST ETHERNET RACKMOUNT SWITCHES

Fast Ethernet Office Switch **NEW**

- 24 10/100 Mbps auto-sensing Auto-MDIX RJ-45 ports
- 2 Gigabit (RJ-45 + SFP) combo ports
- Supports NWay auto-negotiation
- Store and forward switching architecture
- Wire-speed packet filtering and forwarding rate
- Full/half duplex operation
- Supports 802.3x flow control for full duplex mode and collision-based backpressure for half duplex mode
- Supports up to 8192 MAC address entries
- 320 kBytes buffer memory
- Includes 19" rackmount brackets

523929



Fast Ethernet Rackmount Switch

- 10/100 auto sensing ports - automatically detects optimal network speeds
- Supports any combination of 10 Mbps or 100 Mbps network devices
- Rack-mountable metal chassis
- LEDs for Link Activity
- 10/100 Mbps for Half/Full Duplex
- Nway Auto-Negotiation
- Non-blocking design
- Store and forward switching architecture

520409 16 port, 2000 MAC Address entries, 512 kBytes buffer memory

520416 24 port, 8000 MAC Address entries, 320 kBytes buffer memory

520423 32 port, 4000 MAC Address entries, 1 MBytes buffer memory

522618 48 port, 8000 MAC Address entries, 512 kBytes buffer memory

520409

520416

520423

522618



GIGABIT ETHERNET LAN SWITCHES

The INTELLINET NETWORK SOLUTIONS Gigabit LAN Switches provide an easy and affordable way to bring Gigabit speeds to your small office or home network. They are so easy to use – literally plug-and-play. Just connect the cable, and the switches sense and adjust to the speed of each connected device automatically.

Each port is independent so you can mix and match Ethernet types, keeping your favorite older Ethernet devices in your network while adding new high speed devices. They have enough RAM buffer to prevent data from bottlenecking when different Ethernet speeds operate within the same network.

These switches also auto negotiate duplex, supporting half- or full-duplex for 10-Mbps and 100-Mbps speeds, and full-duplex only at Gigabit speeds. And with Auto MDI/KMDI-X on all ports, you don't have to worry about having a crossover cable on hand.

Product Summary

Description	Model	Chassis Style	Number of Gigabit Ethernet RJ45 Ports	Other Ports	Mgmt. Type	Port Location (Front Rear)
Gigabit Ethernet Rackmount Managed Switch	523547	Rackmount	16	4 x SFP	- SNMP - Web Browser - RS232 Console	Front
	523554	Rackmount	24	4 x SFP	- SNMP - Web Browser - RS232 Console	Front
Gigabit Ethernet Desktop Switch	523219	Desktop (Metal)	5	None	None	Rear
	523080	Desktop (Metal)	8	None	None	Front
	523530	Desktop (Rackmountable)	16	None	None	Rear
	523523	Desktop (Rackmountable)	24	None	None	Rear
Gigabit Ethernet Rackmount Web-Smart Switch	523110	Rackmount	16	None	- Web Browser - RS232 Console	Front
	523127	Rackmount	24	None	- Web Browser - RS232 Console	Front
Gigabit Ethernet Managed Desktop Switch	523776	Desktop (Metal)	8	0 x SFP	- SNMP - Web Browser - RS232 Console	Front
			7	1 x SFP		

GIGABIT ETHERNET LAN SWITCHES

Gigabit Ethernet Rackmount Web-Managed Switch

- 10/100/1000 auto-sensing ports - automatically detect optimal network speeds
- 4 SFP Mini-GBIC transceiver module slots (use of the SFP port disables the connection of its corresponding copper port automatically)
- All RJ-45 ports with Auto-MDIX (auto uplink) support
- Supports NWAY Auto-Negotiation
- Store and forward switching architecture
- Full/half duplex operation
- IEEE 802.3x flow control for full duplex
- Zero packet loss back-pressure flow control for half duplex
- Non-blocking wire-speed forwarding and filtering
- Supports port controls (speed, flow control and maximum frame size)
- Broadcast storm control with multicast packet rate settings
- Supports VLAN (16 groups) and trunking (8 groups)
- Supports Quality of Service (QoS) with 2 priority levels
- Supports port mirroring
- Supports jumbo frames up to 9 kBytes
- Packet filtering/forwarding rates: 1,488,000 pps (1000 Mbps), 148,800 pps (100 Mbps), 14,880 pps (10 Mbps)
- Rugged metal housing for maximum durability
- Supports up to 8192 MAC address entries
- Supports SNMP management
- Configuration via Web browser or RS232 console port
- Includes 19" rackmount brackets

523547 16-Port

523554 24-Port



**Go to page 44
for a list of available
SFP Modules**

Gigabit Ethernet Desktop Switch

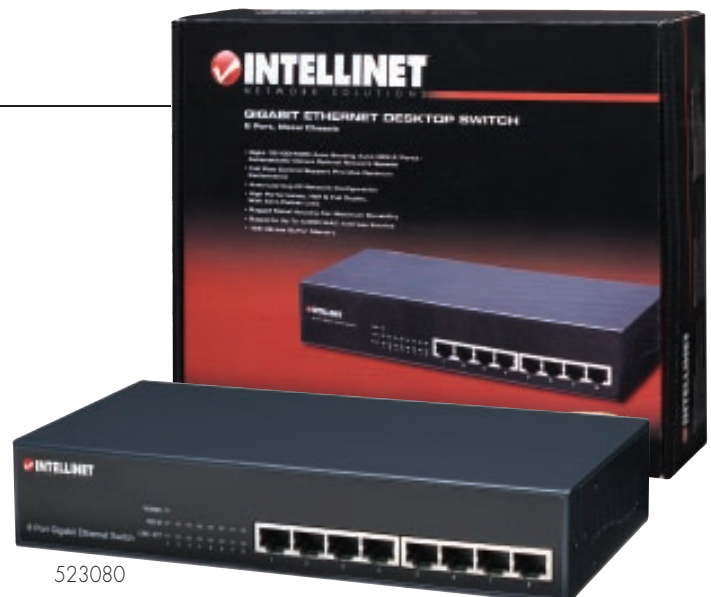
- Five 10/100/1000 auto sensing Auto MDIX ports - automatically detect optimal network speeds
- Full flow control support provides optimum performance
- Auto-learning of network configuration
- High performance, half & full duplex, with Zero-Packet Loss
- Rugged metal housing for maximum durability
- Supports up to 4,000 MAC Address entries
- 128 kBytes buffer memory

523219 5 port

523080 8 port

523530 16-Port, Metal Chassis

523523 24-Port, Metal Chassis



GIGABIT ETHERNET LAN SWITCHES

Gigabit Ethernet Rackmount Web-Smart Switch

- 10/100/1000 auto-sensing ports - automatically detect optimal network speeds
- All RJ-45 ports with Auto-MDIX (auto uplink) support
- Supports NWAY Auto-Negotiation
- Broadcast storm control with multicast packet rate settings
- Store and forward switching architecture
- Full/half duplex operation
- IEEE 802.3x flow control for full duplex
- Zero packet loss back-pressure flow control for half duplex
- Packet filtering/forwarding rates: 1,488,000 pps (1000 Mbps), 148,800 pps (100 Mbps), 14,880 pps (10 Mbps)
- Supports port controls (speed, flow control and maximum frame size)
- Supports VLAN (tag-based and port-based)
- Supports link aggregation (trunking)
- Supports QoS (Quality of Service): custom TOS, shaper, policier and storm
- Supports port mirroring
- Supports jumbo frames up to 9.6 kBytes
- Configuration via Web browser or RS-232 console port
- 19" rackmount
- LEDs for power, link/activity, connection speed

523110 16 port, 4000 MAC Address entries, 256 kBytes buffer memory

523127 24 port, 8000 MAC Address entries, 400 kBytes buffer memory



Gigabit Ethernet Managed Switch

- Eight 10/100/1000 Mbps auto-sensing Auto-MDIX RJ-45 ports automatically detecting optimal network speeds
- One SFP (mini-GBIC) slot for optional fiber connection
- Configuration via Web browser
- Supports NWAY Auto-Negotiation
- Store and forward switching architecture
- Full/half duplex operation
- IEEE 802.3x flow control for full duplex
- Zero packet loss back-pressure flow control for half duplex
- Packet filtering/forwarding rates: 1,488,000 pps (1000 Mbps), 148,800 pps (100 Mbps), 14,880 pps (10 Mbps)
- Supports tag-based VLAN, 8 groups
- Supports Port Mirroring
- Supports Port Aggregation with 4 trunking groups
- Supports 3 types of QoS: port-based, 802.1p and DSCP
- Broadcast storm control
- Supports Jumbo frames 9 kBytes
- Supports up to 8192 MAC address entries
- 180 kBytes buffer memory

523776



GIGABIT ETHERNET SFP TRANSCEIVERS

The INTELLINET NETWORK SOLUTIONS new line of Small Form-Factor Pluggables (SFPs) transceivers provides customers with a combination of both performance and affordability. They are available in a metal housing which reduces electromagnetic interference, and increases their durability.

Small Size for High Density Fiber Connections

The transceiver comes in a mini-GBIC form factor, making it ideal for environments that require many fiber connections by taking up less space in your cabinet and/or computer room. Install them in LAN switches and media converters.

Multi-vendor Compatible

Meets SFP GBIC standard for use with any SFP GBIC compliant slot. Use the transceiver with any LAN switch or media converter in your network, as long as it supports the SFP GBIC standard.

Hot Pluggable

No need to power down your LAN switch in order to install or remove the transceiver. This makes it very convenient and easy for you to make adjustments to your network that allow your business to keep pace with the changing demands of the market.

Gigabit Ethernet SFP Mini-GBIC Transceiver

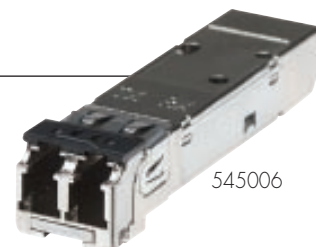
- Data transfer rate: 1000 Mbps
- One 1000Base-SX multi-mode Fiber LC duplex port
- Distance support: up to 550 m (50/125 μ m cable) or 220 m (62.5/125 μ m cable)
- Compliant with SFP Transceiver MSA specification
- Wavelength: 850 nm
- SFP standard form factor
- Supports hot-plugging

545006 1000Base-SX (LC) Multi-Mode Port, 550 m

545013 1000Base-LX (LC) Single-Mode Port, 10 km

545075 1000Base-LX (LC) Single-Mode Port, 20 km, WDM (RX1310/TX1550)

545068 1000Base-LX (LC) Single-Mode Port, 20 km, WDM (RX1550/TX1310)



545020 1000Base-LX (LC) Single-Mode Port, 40 km

545037 1000Base-LX (LC) Single-Mode Port, 40 km, 1550 nm

545044 1000Base-ZX (LC) Single-Mode Port, 80 km, 1550 nm

LAN Switches that support SFP modules:

500456

Fast Ethernet Rackmount Web-Smart Switch with 2 Gigabit Ports
24 RJ-45 10/100 Ports, 2 RJ-45 10/100/1000 Ports (page 39)

523547

Gigabit Ethernet Rackmount Managed Switch
16-Port + 4 SFP Module Slots, Metal Chassis (page 42)

523554

Gigabit Ethernet Rackmount Managed Switch
24-Port + 4 SFP Module Slots, Metal Chassis (page 42)

523868

Managed Layer 3 Access Switch
24 RJ-45 10/100 + 4 Gigabit Combo Ports, SFP and RJ-45 (page 39)

523776

Gigabit Ethernet Managed Switch
8 RJ-45 10/100/1000 Ports + SFP Slot, Desktop (page 43)

523929

Fast Ethernet Office Switch
24 RJ-45 10/100 + 2 Gigabit Combo Ports (SFP and RJ-45) (page 43)

Media converters that support SFP modules:

510493

Gigabit Ethernet Media Converter
10/100Base-TX/1000Base-T to 1000Base-SX Multi-Mode/
1000Base-LX Single-Mode, SFP (page 53)

510486

Gigabit Ethernet Redundant Link Media Converter
10/100Base-TX / 1000Base-T to 2 x 1000Base-SX Multi-Mode /
1000Base-LX Single-Mode, SFP (page 53)

REMOTE POWER MANAGER

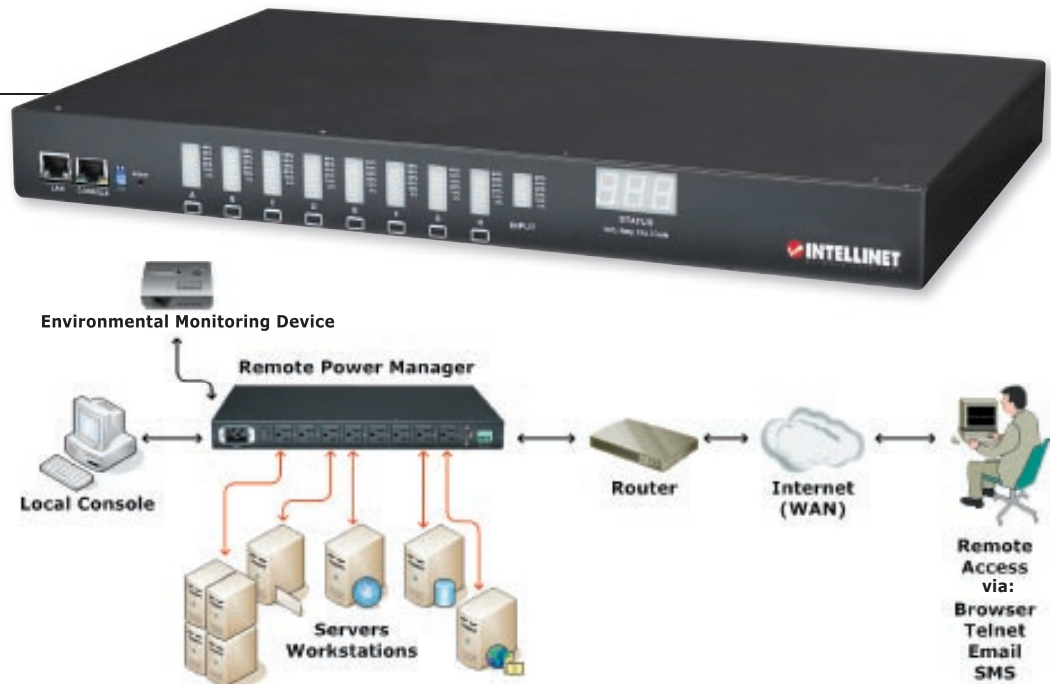
Monitor, Control and Reboot Power... Anywhere!

The INTELLINET NETWORK SOLUTIONS Remote Power Manager is an Internet-ready device designed to allow network administrators remote and individual control of AC power for up to eight devices. Intelligent remote power management of rack-level hardware (servers, routers, modems and telephone networks) allows you to control critical power with the security of knowing your investment is protected. With the Remote Power Manager, you can be alerted via email messages, SMS pager messages and SNMP traps to respond to problems immediately to minimize or eliminate downtime.

Remote Power Manager

- Turns any AC-powered device on or off remotely via a Web browser, NMS, Telnet, SNMP or Hyperterminal (console)
- Controls the power of up to 8 connected devices
- Safeguards equipment from power surges, lightning strikes and other power anomalies
- Intelligently turns devices on/off based on event occurrence or planned schedule
- Administrator and multiple users with password protection for double-layer security
- Address-specific IP security masks prevent unauthorized sources from accessing the RPM menu through the network
- Supports SSL V3 and SSH V1 protocols
- Detailed data-logging for statistical analysis and diagnostics
- Event notification through SNMP traps or email alerts
- Daily history report via email
- Downloads data and events log list to servers
- Can be attached to an optional Environmental Monitoring Device (EMD), Model 502948

156127



Remote Power Recycling - Reboot from Anywhere!

Monitor, control and reboot servers and other connected devices remotely using standard protocols such as single dial-up, SNMP, Telnet and the Web. So even if the network locks up, there is always a backup control option for administrators.

Power Monitoring

The Remote Power Manager keeps you aware of any AC power disruption to the devices that are attached by automatically notifying you through SNMP alerts or email. Detailed data-logging is captured for statistical analysis and diagnostics, and is available in a daily history report through email.

Remote Temperature and Humidity Sensing

The intelligent Remote Power Manager includes optional ambient temperature-sensing capability. When equipped with the optional Environmental Monitoring Device (EMD), it can monitor and report an over-temperature condition, reducing the risk of equipment damage.

Environmental Monitoring Device (EMD)

- Provides monitoring of your computer-room environment
- Configurable through Remote Power Manager Web interface
- Integrated temperature and humidity sensor
- 2 additional connectors (open/close) for motion detectors, smoke detectors and other sensors and alarms
- Programmable alert state ("normal open" or "normal close")

502948



INDUSTRIAL ETHERNET SWITCHES

**Gigabit Managed and
Unmanaged Versions Coming
1st Quarter 2008!**

INTELLINET NETWORK SOLUTIONS industrial grade network LAN switches and media converters have been designed to focus on Ethernet deployment in automation applications (such as factories). The new products listed below have been specially developed for industrial Ethernet applications with all concerns for industrial environments taken into consideration, including network redundancy features and robust mechanical form factors.

These products are manufactured using a one-piece formed aluminum case to provide a rugged, acid corrosion-proof and heat resistant solution. The terminal block and ventilation holes are placed on the bottom side of each unit to reduce the chance of damage due to dust and moisture entry. They come with special brackets that allow them to be installed on a DIN rail just as circuit breakers and other industrial control equipment are installed inside equipment racks.

"I am currently using the 5 and 8 port Industrial Fast Ethernet Rail Switches in areas with heat and coal dust issues with excellent results. I have replaced NetGear and other brands of switches in this application that could not withstand the environment. The efficiency of the network has also increased as confirmed by monitoring completion times of read/write commands to ethernet I/O modules in a PLC application. I have used Hirschmann industrial switches but was not impressed with their all plastic cases as opposed to the Intellinet all metal cases. Intellinet Industrial Switches offer equal and usually more features than other brands at up to one half the cost. For example I use the Industrial Managed Fast Ethernet Rail Switch that has two fiber ports, six copper ports, redundant ethernet Super Ring, and many other features. A Hirschmann basic, plastic case, un-managed switch with two fiber ports and only three copper ports is nearly the same price while a Hirschmann managed switch similar to the Intellinet switch is double the cost."

Jack Eirwin
Senior Controls Engineer
Industrial Controls Division
William E. Groves Construction, Inc.

Industrial Managed Fast Ethernet Rail Switch

- Rigid aluminum case design with IP30 protection
- Alarm relay output for port break and power failure
- Features Super Ring — a redundant Ethernet network technology
- 10/100 auto-sensing ports — automatically detect optimal network speeds
- Supports any combination of 10 Mbps or 100 Mbps network devices
- All RJ-45 ports with Auto MDI-X and NWay auto-negotiation support
- Two 100Base-FX multi-mode Fiber SC duplex ports
- Fiber distance support: up to 2 km or 1.24 miles (62.5/125 or 50/125 μ m cable)
- Store-and-forward switching architecture
- Supports IEEE802.3q VLAN
- Supports port mirroring
- IGMP snooping reduces multicasting traffic on the network
- Web-based configuration
- Full/half duplex operation
- Provides true non-blocking switching performance
- Supports IEEE 802.3x flow control on full duplex and back pressure on half duplex
- Supports 2048 MAC address entries
- 128 kBytes buffer memory
- LEDs for power, link/activity, full/half duplex
- DIN rail kit, or wall-mounting ears for 3-way installation
- Terminal block to provide dual power inputs with reverse polarity protection

503129 6-port RJ-45, 2-port 100Base-FX (SC) multi-mode, 2km, IP30 industrial standard

503136 6-port, RJ-45, 2-port 100Base-FX (SC) single-mode, 30 km, IP30 industrial standard

503112 8-port RJ-45, IP30 industrial standard



INDUSTRIAL ETHERNET SWITCHES



Industrial Fast Ethernet Rail Switch

- Rigid aluminum case design with IP30 protection
- 10/100 auto-sensing ports — automatically detect optimal network speeds
- Supports any combination of 10 Mbps or 100 Mbps network devices
- All RJ-45 ports with Auto MDI-X and NWay auto-negotiation support
- Store-and-forward switching architecture
- Full/half duplex operation
- Provides true non-blocking switching performance
- Supports IEEE 802.3x flow control on full duplex and back pressure on half duplex
- Supports 1024 MAC address entries
- 64 kBytes buffer memory
- LEDs for power, link/activity, full/half duplex
- DIN rail kit, or wall-mounting ears for 3-way installation
- Terminal block to provide dual power inputs with reverse polarity protection

500920 5-port, IP30 industrial standard

503099 8-port, IP30 industrial standard



500920

503099

Industrial Fast Ethernet Rail Converter

- Rigid aluminum case design with IP30 protection
- Integrated link loss forwarding (LLF) technology
- Data transfer rate: 100 Mbps
- One 10/100Base-TX RJ-45 port, maximum distance 100 m
- RJ-45 port with Auto MDI/MDI-X support and auto-negotiation
- One 100Base-FX multi-mode Fiber SC duplex port
- Fiber distance support: up to 2 km or 1.24 miles (62.5/125 or 50/125 μ m cable)
- Full/half duplex operation
- Supports IEEE 802.3x flow control on full duplex and back pressure on half duplex
- LEDs for power, link/activity, full/half duplex
- DIN rail kit, or wall-mounting ears for 3-way installation
- Terminal block to provide dual power inputs with reverse polarity protection

503143 10/100Base-TX to 100Base-FX (SC) multi-mode, 2 km

503150 10/100Base-TX to 100Base-FX (SC) single-mode, 30 km



503143

503150

Product Summary

Style	Model #	Internal Electric Power	# of USB Computers	# of PS/2 Computers	Audio	On Screen Display	Cascade for Growth	Special Features or Comments
Mini with Built-in Cables	500753	✓	-	2	-	-	-	
	502528	✓	-	4	-	-	-	
	500852	✓	-	2	✓	-	-	
	500869	✓	2	-	✓	-	-	
Desktop	156745	✓	1	2	-	-	-	
	156752	✓	-	4	-	-	-	
	157025	✓	2	-	✓	-	-	
	157032	✓	4	-	✓	-	-	
	207003	-	-	1	-	-	-	KVM or Console Extension
	156721	-	-	4	-	✓	✓	
	156059	-	2	-	✓	-	-	DVI Support
	156066	-	4	-	✓	-	-	DVI Support
Rackmount	156899	-	-	8	-	-	✓	
	156738	-	-	8	-	✓	✓	
	157858	-	-	16	-	✓	✓	
	501620	-	USB or PS/2 8 Computers Maximum		-	✓	✓	15" LCD & Keyboard
	523561	-			-	✓	✓	17" LCD & Keyboard
	523578	-			-	✓	✓	19" LCD & Keyboard

KVM Extender

- Extends up to 150 m (450 ft.)
 - Uses inexpensive Cat5 RJ-45 cable
 - Supports VGA, SVGA and multi-sync monitors
 - Supports video resolutions up to 1280 x 1024
 - 150 MHz video bandwidth
 - Supports horizontal frequencies up to 100 kHz
 - Supports vertical frequencies up to 120 Hz
 - Supports PS/2 mice and keyboards
 - Dual-console operation: Control the computer or KVM switch locally or remotely
 - Computer connection to transmitter unit via 3-in-1 connection cable (included)
 - Compatible with all PS/2-equipped computer systems
- 207003** Extend your KVM or Console up to 150 m (450 feet)



Mini KVM Switches with Cables

- Operate two PS/2 computers with one keyboard, mouse and monitor
- Simply plug in the attached cables - nothing else required!
- Full keyboard and mouse emulation for error-free booting
- Hot key commands and LED indicators for computer selection
- No software or power required
- Supports video resolution up to 2048 x 1536
- Compatible with all operating systems

500753 2 Port PS/2

502528 4-Port, PS/2

500852 2 Port PS/2 With Audio

500869 2 Port USB With Audio*

* Console connection via PS/2



LCD Panel KVM Switches

- Integrated LCD console, keyboard, mouse, and KVM switch module for rack-mount installation
- Manage/control 8 PS/2 or USB computers from one keyboard, monitor and mouse
- Standard 19 inch 1U rack drawer
- Flip-open LCD panel supports 1280 x 1024 resolution
- For rack cabinets with depth from 67.5 to 80.5 cm (26 5/8 to 31 5/8 in.)
- Locking mechanism locks the drawer when pulled out, pushed in, or folded down
- Full 105 key, low-profile, sturdy keyboard included
- Ergonomic hand rest design
- Ultra sturdy, tilt-free, two-piece rear bracket and extension design
- Universal CEN36 connector for connection between console drawer and KVM switch module
- Modularized KVM switch design
- OSD control and adjustment
- Cascadable to all INTELLINET NETWORK SOLUTIONS Rackmount PS/2 KVM switches for expansion
- Auto-scan automatically selects computers sequentially
- Supports Microsoft IntelliMouse (Pro)
- Supports both PS/2 and serial mice
- Uses 3-in-1 space saving cables
- Assign computers unique and meaningful names
- Identify and select computers by name
- Programmable scan filters unused computers
- Store system settings and name entries to non-volatile memory
- Password security protects computers from unauthorized use
- Gain complete control with easy-to-use OSD interface
- Hotkey functions allow easy computer access
- Keyboard states automatically saved and restored when switching computers
- Operating system independent, transparent to all applications
- Plug and Play system configuration
- Keyboard and mouse can be hot plugged at any time
- DDC2B compatible
- Includes one set of 6 ft. (1.8 m) connection cables for PS/2 computer

501620 15-Inch LCD Panel, PS/2 or USB, 8 Computer Ports, 1U

523561 17 Inch LCD Panel, PS/2 or USB, 8 Computer Ports, 1U

523578 19 Inch LCD Panel, PS/2 or USB, 8 Computer Ports, 1U



523561



523578

KVM Cables – LCD Panel KVM Switches

- One HD15 male connector for connection to the KVM switch
- Two PS/2 male connectors and one HD15 male connector for connection to a computer
- Coaxial wires used for red, green, and blue signals to ensure the highest performance

502535 PS/2, 6 ft. (1.8 m)

503242 USB, 6 ft. (1.8 m)

503303 PS/2, 10 ft. (3.0 m)

503327 USB, 10 ft. (3.0 m)



502535

503242

DESKTOP KVM SWITCHES AND CABLES

DVI KVM Switches

- Control multiple USB computers with one PS/2 keyboard, PS/2 mouse and DVIH video monitor
- Easy switching via "hot keys" or logically designed push-button selectors
- Flash upgradeable for firmware compatibility
- Built-in microphone and speaker jacks for multimedia environments
- LEDs for easy monitoring of selected computers
- Asynchronously switch between computers and USB devices using fast "hot keys" e.g. print from one USB computer while working on another!
- Auto-Scan mode for monitoring computers
- Easy installation-No software to install
- Supports digital video resolutions of up to 1600x1200
- Supports Windows 98/2000/Me/XP, Free BSD, Linux

156059 2 Port, With Audio

156066 4 Port, With Audio



Compact KVM Switches

- 3-in-1 cables included
- Manage/control 2 PS/2 computers from one keyboard, monitor and mouse
- No software required, works independently of computer operating systems
- Switch between PCs with the press of a button or keyboard "hot key" commands
- Supports 1920 x 1440 high resolution
- Slim desktop design with all cables at the rear saves desktop space

156745 2 Port, Compact with Cables

156752 4 Port, Compact with Cables



Enhanced Compact KVM Switches

- Manage/control 2 USB computers from one keyboard, monitor and mouse
- Audio and Microphone switching for uninterrupted multimedia experience across multi-platforms
- Multi-platform support for PCs and MAC systems (Switching software client only available for Windows)
- Hot-plugging PCs for maintenance without powering down the KVM Switch or PCs
- Channel selection via push buttons, user definable keyboard hotkeys (Windows only) and Windows based switching software client
- LED indicators for easy status monitoring
- Supports resolutions up to 2048 x 1536 pixels
- USB bus powered - no external power adapter required
- Includes two connection cables for computer connection
- Includes two connection cables for speaker and microphone

157025 2-Port, USB, Compact, with Cables and Audio Support

157032 4-Port, USB, Compact, with Cables and Audio Support



DESKTOP KVM SWITCHES AND CABLES

On-Screen Display KVM Switch

- Manage / control up to four CPUs from one keyboard, monitor and mouse
- Pop-up On Screen Display menu
- No software required
- Works independently of computer operating systems
- Metal housing
- Hot Plug and Play, no need to shut down the KVM switch to attach or remove PCs
- Switch between PCs with the press of a button or keyboard "hot key" commands
- Supports 1920 x 1440 resolution
- Cascade to other INTELLINET NETWORK SOLUTIONS KVM switches for expansion

156721 4 Port



RACKMOUNT KVM SWITCHES AND CABLES

Rackmount KVM Switches

- Manage/control up to eight computers from one keyboard, monitor and mouse
- No software required
- Works independently of computer operating systems
- Hot Plug-and-Play, no need to shut down the KVM switch to attach or remove PCs
- Switch between PCs with the press of a button or keyboard "hot key" commands
- Supports 1920 x 1440 resolution
- Cascade to other INTELLINET NETWORK SOLUTIONS KVM switches for expansion
- Computer connections:
 - Keyboard - PS/2
 - Mouse - PS/2 Serial (with adapter)
 - Monitor - HD-DB-15 male
- Console connections:
 - Keyboard - PS/2
 - Mouse - PS/2
 - Monitor - HD-DB-15 female

156899 8 Port, Rackmount

156738 8 Port, Rackmount with On-Screen Display

157858 16 Port, Rackmount, On-Screen Display



157858

3-in-1 Cables for PS/2 KVM Switches

- Keyboard, Monitor and Mouse all in one cable
- Connects an Auto KVM Switch to a PC
- 2 x MD6M & HD15M to 2 x MD6M & HD15F

205009 6 ft.

205016 10 ft.



2-in-1 Cables for USB KVM Switches

- Connects a USB KVM Switch to a PC
- Monitor Cable HD15 male to HD15 female, molded, triple shielded (3 coaxial conductors)
- USB Cable A male to B male, molded, shielded, High-Speed USB
- Designed exclusively for INTELLINET NETWORK SOLUTIONS KVM Switches

370691 6 ft.

370677 10 ft.

370684 15 ft.



Media Converter Chassis 12 Port

- High-quality 19" rackmount steel chassis
- Supports up to 12 stand-alone media converters
- Internal 100 – 240 V universal switching power supply
- Slot for redundant power supply, model 510554
- Power supplies are hot-swappable and support load sharing
- ON/OFF trigger guard protection on power switch
- Three high-volume cooling fans ensure perfect ventilation
- LED status panel with fan and slot and power LEDs
- LED Status indicator for each slot
- Slot power isolation — ensures each slot is electrically isolated from the next
- Supports INTELLINET NETWORK SOLUTIONS media converters (please refer to compatibility statement of the individual media converters)
- Avoids network downtime and protects your converter investments



519151

Redundant Power Supply for 519151

- Additional power supply for the 12-port media converter chassis
- Power supplies are hot-swappable and support load sharing

510554 75 W



Product Summary

Media Converter Model #	Rate (Mbps)	Fiber Port	Wave-length	Mode	Fiber Length				
					550 m 1,804 ft.	2 km 1.24 mi.	10 km 6.2 mi.	20 km 12.4 mi.	30 km 18.6 mi.
519069	100	SC	1310 nm	Single					
515320	10/100	ST	1310 nm	Multi					
515337	10/100	SC	1310 nm	Multi					
515344	10/100	SC	1310 nm	Single					
510547	10/100	SC	1550 RX 1310 TX	Single					
510530	10/100	SC	1310 RX 1550 TX	Single					
515351	1000	SC	850 nm	Multi					
510509	1000	SC	1550 RX 1310 TX	Single					
510523	1000	SC	1310 RX 1550 TX	Single					
515368	1000	SC	1310 nm	Single					
510493	10/100/1000	SFP	Determined by type of SFP Used See "Switches" section for ordering information.						
510486	10/100/1000	2xSFP							

All of the media converter products listed above can be installed standalone or into the following chassis:
Model 519151 12 Port (with optional backup power supply Model 510554).

Media converters listed below are only compatible with 12 port chassis (model 519151).

Ethernet Media Converter

- Converts Ethernet media
- 100Base-TX to 100Base-FX (SC) Single-Mode
- Status LEDs
- External power adapter
- Converters can be used stand-alone or installed in the INTELLINET NETWORK SOLUTIONS 12 Port Chassis Model 519151

519069



10/100 Mbps Media Converters

- Data transfer rate: 100 Mbps
- One 10/100Base-TX RJ-45 Port, maximum distance 100 m / 300 ft
- RJ-45 port with Auto MDI/MDI-X support and auto-negotiation
- One 100Base-FX Multi-Mode fiber ST duplex port
- Fiber distance support: up to 2 km / 1.24 mi (62.5/125 or 50/125 μ m cable)
- Status LEDs for easy monitoring of device status
- Link Fault Signaling (LFS)
- Remote and local loop back test
- DIP switches for multiple configuration options
- External power adapter
- Can be used stand-alone or in INTELLINET NETWORK SOLUTIONS converter chassis model 519151

515320 10/100Base-TX to 100Base-FX (ST) Multi-Mode, 2 km (1.24 mi)

515337 10/100Base-TX to 100Base-FX (SC) Multi-Mode, 2 km (1.24 mi)

515344 10/100Base-TX to 100Base-FX (SC) Single-Mode, 30 km (18.6 mi)

510547 10/100Base-TX to 100Base-FX (SC) Single-Mode, 20 km (12.4 mi.), WDM (RX1550/TX1310)

510530 10/100Base-TX to 100Base-FX (SC) Single-Mode, 20 km (12.4 mi.), WDM (RX1310/TX1550)



515320



515337

Gigabit Ethernet Media Converters

- Data transfer rate: 1000 Mbps
- 10/100/1000Base-T auto-sensing RJ-45 port, maximum distance 100 m / 300 ft. (Cat5e and better)
- RJ-45 port with Auto MDI/MDI-X support
- SFP ("Small Form Factor Pluggable") optical transceiver module port (SFP module not included)
- Module port for Gigabit multi-mode or single-mode Mini GBIC 1.25G SFP-type fiber modules
- Status LEDs for power and Link/TX for both ports
- Link Fault Signaling (LFS)
- External power adapter
- Can be used stand-alone or in INTELLINET NETWORK SOLUTIONS converter chassis model 519151

515351 1000Base-T to 1000Base-SX (SC) Multi-Mode, 220 m (720 ft.)

515368 1000Base-T to 1000Base-LX (SC) Single-Mode, 10 km (6.2 mi)

510509 1000Base-T to 1000Base-LX (SC) Single-Mode, 10 km (6.2 mi.), WDM (RX1550/TX1310)

510523 1000Base-T to 1000Base-LX (SC) Single-Mode, 10 km (6.2 mi.), WDM (RX1310/TX1550)

510493 10/100Base-TX/1000Base-T to 1000Base-SX Multi-Mode/1000Base-LX Single-Mode (SFP)

510486 10/100Base-TX / 1000Base-T to 2 x 1000Base-SX Multi-Mode / 1000Base-LX Single-Mode (SFP)



515351



510493

**Go to page 44
for a list of available
SFP Modules**

7 Port BNC Converter

- Seven 10/100 auto sensing ports - automatically detect optimal network speeds
- One 10 Mbps BNC port
- Supports any combination of 10 Mbps or 100 Mbps network devices
- All RJ-45 ports with Auto-MDIX and NWAY Auto-Negotiation support
- Store and forward switching architecture
- Full/half duplex operation
- Supports 1024 MAC address entries
- 256 kBytes buffer memory
- Compact metal case
- LEDs for power, link/activity

503433

**Includes
Built-In BNC
Converter**





Compatibility Matrix

Compatibility Matrix

			19" Free Standing												19" Server			19" Wall Mount				Double Section Wall Mount			19" Open & Mini Racks				
			601498	673266	601573	601528	601542	601597	674768	601504	601535	601580	601559	601603	672661	674261	673661	601351	601382	601443	601467	670903	671203	671603	673601	674201	674801	601511	674200
Weight in lbs.																													
Fans																													
601672	Four Fan	10	X	X	X	X	X	X	X	X	X	X	X	X	X	X	X												
601689	Six Fan	16														X	X	X											
601634	Double Fan	5.5	X	X	X	X	X	X	X	X	X	X	X	X	X	X	X	X	X	X	X	X	X						
Support Brackets																													
680060	Support Brackets	1.76	X	X	X					X	X	X																	
680080	Support Brackets	2.6				X	X	X	X					X	X														
680010	Support Brackets	5.1														X	X	X											

19" FLAT PACK CABINETS

The CLASSIC Line and PRO Line 19" Cabinets are also available unmounted in a shipping-friendly flatpack. Once assembled the cabinets provide all features and advantages of the pre-assembled versions.

- Lower freight costs
- Require less space for stocking
- More flexibility and mobility for delivery and installation
- Dimensions shown are assembled size



23.5" Depth Cabinets

Model	Height	Dimensions	Packing Type
601504	22U (38.5")	24" x 24" x 38.5"	Flat-pack
601535	32U (56.1")	24" x 24" x 56.1"	Flat-pack
601580	42U (73.5")	24" x 24" x 73.5"	Flat-pack

31.5" Depth Cabinets

Model	Height	Dimensions	Packing Type
601559	32U (56.1")	24" x 30" x 56.1"	Flat-pack
601603	42U (73.5")	24" x 30" x 73.5"	Flat-pack

19" FREE-STANDING CABINETS

- Pre-assembled
- Front door features a full length smoked and shatterproof glass door (t=1.7 in.) reinforced with decorative metal frame
- Pop up lock and three point locking mechanism
- Mounting brackets = (front/2ea and back/2ea) allow for flexible configuration and adjustable depth
- Multiple cable entry points on the roof and bottom of frame
- Quick release, lockable and removable side doors with slam latches and locks
- Powder coat paint finish
- Leveling feet included
- Vented top panel
- Secure, locking front and back doors with spring loaded hinges offer best accessibility; removable when connecting the cabinets
- Rigid, welded frame construction
- Sturdy steel construction
- Easy mounting, fast assembly
- Reversible doors
- Black



23.5" Depth Cabinets

Model	Height	Dimensions	Packing Type
601498	22U (38.5")	24" x 24" x 38.5"	Pre-assembled
673266	32U (56.1")	24" x 24" x 56.1"	Pre-assembled
601573	42U (73.5")	24" x 24" x 73.5"	Pre-assembled

31.5" Depth Cabinets

Model	Height	Dimensions	Packing Type
601528	26U (45.5")	24" x 30" x 45.5"	Pre-assembled
601542	32U (56.1")	24" x 30" x 56.1"	Pre-assembled
601597	42U (73.5")	24" x 30" x 73.5"	Pre-assembled
674768	47U (82.25")	24" x 30" x 82.25"	Pre-assembled

NEW
NEW

19" FREE STANDING CABINET ACCESSORIES

19" Shelving

- Includes mounting hardware
- Black

2 Point Fixed

674830 19", 1U, Solid, 9.75 in. Deep

674835 19", 2U, Vented, 13.7 in. Deep

674935 19", 2U, Solid, 13.7 in. Deep

677453 For 31.5" Depth Cabinets 19",
2U, Vented, 21 in. Deep

4 Point Fixed

To be used with 601498, 673266, 601573

676035 19", Vented, 13 in. Deep

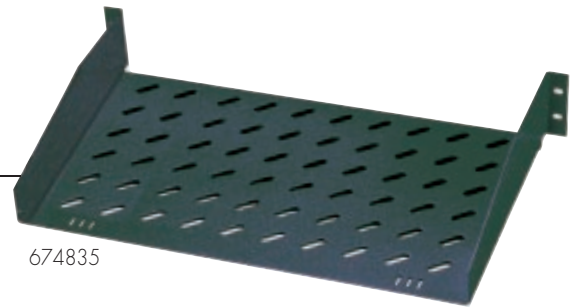
To be used with 601528, 601542, 601597, 674768

678052 19", Vented, 20 in. Deep

4 Point Sliding

To be used with 601528, 601542, 601597, 674768

678054 19", Vented, 21 in. Deep, Black



674835



674935



676036

Slide Rails

- Slide Rails for mounting in cabinets or open racks
- Fit any standard 19" rack or enclosure
- Fits cabinets up to 40 inches deep

680601 For Rackmount Cases



19" Fixed Server Support Bracket

Brackets are designed to support heavy devices by attaching to the mounting angles at the sides of the 19" cabinets

- Hardware included, easy to install
- Material: Sheet steel, zinc plated

680060 For 23.5" Depth Cabinets, 13 in. Deep, Silver

680080 For 31.5" Depth Cabinets, 19.25 in. Deep, Silver



680060

4 Fan Cooling Unit

- Promotes heat dissipation
- Provides 3.2 m³/min. air circulation
- Noise: 47 dBm
- CE certified
- Complete with power cords and on/off switch
- Material: Sheet steel
- Fits both 23.5" and 31.5" depth cabinets
- 17.32 x 15.75 x 1.57 in. (WxDxH)

601672



For server cabinet fan, see page 59.

See Accessory Product Summary on page 54

19" SERVER CABINETS

- Pre-assembled
- Front door features a full length smoked and shatterproof glass door, reinforced with decorative metal frame
- Pop up lock and three point locking mechanism
- Mounting brackets (front: 2 each / back: 2 each) allow for flexible configuration and adjustable depth
- Multiple cable entry points on the roof and bottom of frame
- Quick release, lockable and removable side doors with slam latches and locks
- Powder coat paint finish
- Leveling feet included
- Vented top panel
- Secure, locking front and back doors with spring loaded hinges offer best accessibility; removable when connecting cabinets
- Removable doors for connecting cabinets
- Rigid, welded frame construction
- Sturdy steel construction
- Easy mounting, fast assembly
- Reversible doors
- Black

Technical Specifications			
Physical			
Order Number	673661	674261	672661
Rack Height	36U	42U	26U
Maximum Width	24 in	24 in	24 in
Maximum Depth	40 in	40 in	40 in
Rack Height	61.3 in	73.5 in	45.5 in
Net Weight	234 lbs	267 lbs	267 lbs
Maximum Height	73 in	83 in	83 in
Weight Capacity	1,763 lbs	1,763 lbs	1,763 lbs
Standards			
IEC297-1 ; IEC297-2			
Protection Class			
IP20			

Lockable and Removable Side Doors



Add
Cage Nuts
680000
Page 64



Add Castor
Wheels
680404
Page 59

19" Server Cabinets

Model	Height	Dimensions	Packing Type
672661	26U (45.5")	24" x 39.6" x 45.5"	Pre-assembled
673661	36U (61.3")	24" x 39.6" x 61.3"	Pre-assembled
674261	42U (73.5")	24" x 39.6" x 73.5"	Pre-assembled

NEW

19" SERVER CABINET ACCESSORIES

Server Cabinet Shelves

- Black
- Max. load: 140 lbs. (671074), 220 lbs. (671075)

671074 Sliding, 28.3 in. Depth

671075 Fixed, Vented, 28.3 in. Depth



671074

19" Shelving

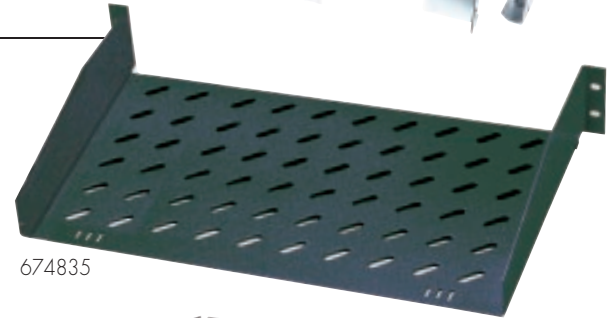
2 Point Fixed

674830 19", 1U, Solid, 13.5 in. Deep

674835 19", 2U, Solid, 13.7 in. Deep

674935 19", 2U, Vented, 13.7 in. Deep

677453 19", 2U, Vented, 21 in. Deep



674835

4 Point Fixed

To be used with 601528, 601542, 601597, 674768

678052 19", Vented, 20 in. Deep

4 Point Sliding

To be used with 601528, 601542, 601597, 674768

678054 19", Vented, 21 in. Deep, Black



674935

Slide Rails

- Slide Rails for mounting in cabinets or open racks
- Fit any standard 19" rack or enclosure
- Fits cabinets up to 40 inches deep

680601



19" Fixed Server Support Bracket

Brackets are designed to support heavy devices by attaching to the mounting angles at the sides of the 19" cabinets

- For use with cabinets # 672661, 674261, and 673661
- Hardware included. easy to install
- Material: Sheet steel. zinc plated

680010



Double Cooling Fan with Thermostat

601689 6 Fans

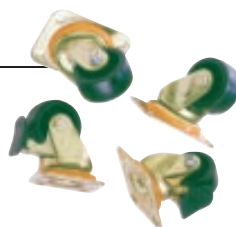
601672 4 fans



Caster Wheels

- Set of four casters
- Two with brake, two without
- Rotational type
- Load capacity per caster = 551 lbs. static load

680404



See Accessory Product Summary on page 54

19" OPEN RACKS & MINI-RACK

2 Post – Single Frame


- Quick access to equipment
- Designed to house 19" standard mounting devices
- Modular design makes it easy to assemble and dismantle
- Uprights can be used as a cable manager
- Powder coat paint finish
- Leveling feet included
- Rigid, welded frame construction
- Sturdy steel construction
- Easy mounting, fast assembly

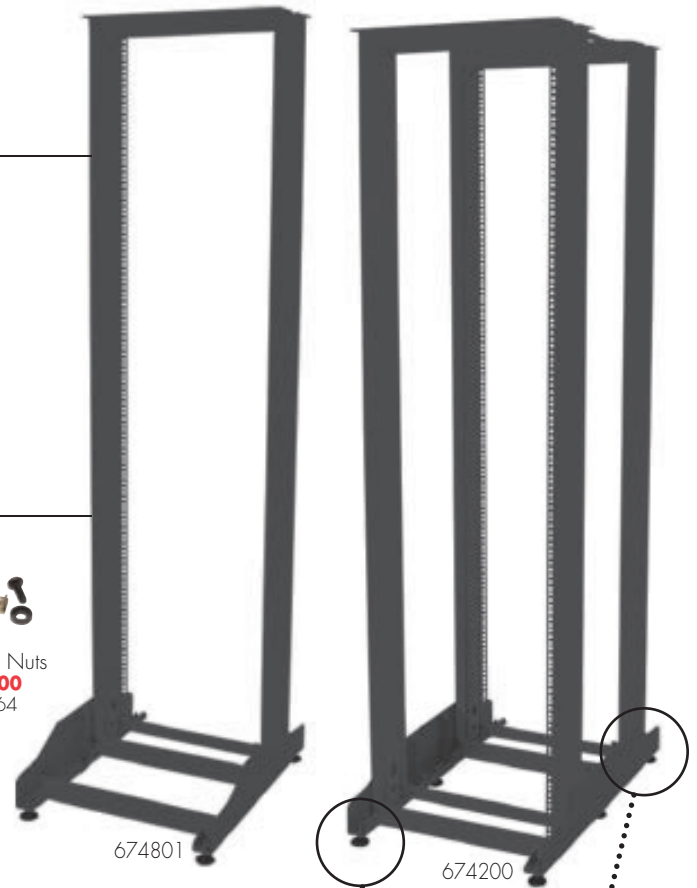
Technical Specifications			
Physical			
Order Number	673601	674201	674801
Rack Height	36U	42U	48U
Rack Height	63 in	73.5 in	84 in
Weight Capacity	660 lbs	660 lbs	660 lbs

4 Post – Double Frame

- Quick access to equipment
- Designed to house 19" standard mounting devices
- Use as single frame or double frame
- Four point mounting accessories available
- Modular design makes it easy to assemble and dismantle
- Uprights can be used as a cable manager
- Powder coat paint finish
- Leveling feet included
- Rigid, welded frame construction
- Sturdy steel construction
- Easy mounting, fast assembly

Technical Specifications		
Physical		
Order Number	601511	674200
Rack Height	26U	42U
Rack Height	45.5 in	72 in
Weight Capacity	660 lbs	660 lbs


 Add
 Cage Nuts
680000
 Page 64



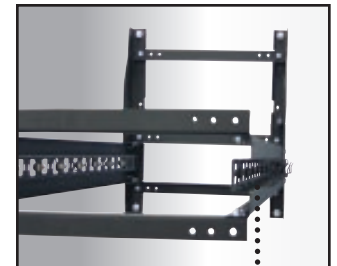
2 Post - Single Frame

Model	Height	Dimensions	Packing Type
673601	36U (61.3")	24" x 24" x 61.3"	Flat-pack
674201	42U (73.5")	24" x 24" x 73.5"	Flat-pack
674801	48U (84.0")	24" x 24" x 84"	Flat-pack

4 Post - Double Frame

Model	Height	Dimensions	Packing Type
601511	26U (45.5")	24" x 30" x 45.5"	Flat-pack
674200	42U (73.5")	24" x 30" x 73.5"	Flat-pack

NEW



Add Cable Management
 Ring (677844) to your
 2 or 4 post open rack.

19" Mini-Rack

- Desktop or wall mountable mini rack
- Designed for small LAN installations
- 19 in. Wide
- 7 in. High (4 U)
- 12 in. Deep

167628 Grey, 19 in. x 12 in. x 7 in.



19" OPEN RACK ACCESSORIES

19" Shelving

- Includes mounting hardware
- Black

2 Point Fixed

674830 19", 1U, Solid, 9.75 in. Deep

674835 19", 2U, Vented, 13.7 in. Deep

674935 19", 2U, Solid, 13.7 in. Deep

677453 19", 2U, Vented, 21 in. Deep

4 Point Fixed

To be used with 673601, 674201, 674801

676035 19", Vented, 13 in. Deep

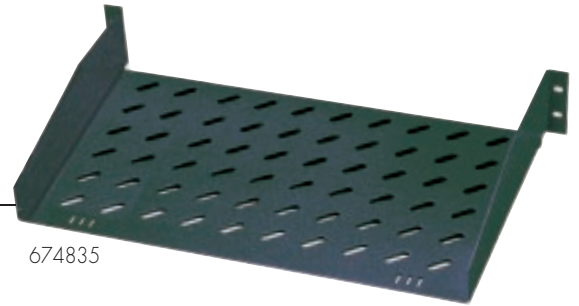
To be used with 601511, 674200

678052 19", Vented, 20 in. Deep

4 Point Sliding

To be used with 601511, 674200

678054 19", Vented, 21 in. Deep



674835



674935



602112

602105

19" Open Rack Shelf

- Standard 19 in. Rackmount, Double Sided Shelf
- 2 U height
- 29 1/2 in. (750 mm) depth
- Load capacity 44 lbs. (15 kg)
- Easy to install
- Black

602112 Solid

602105 Vented

Cable Management Panels & Rings

- Designed for 19" cabinets
- Material: Sheet steel
- Black

677844 1 U, with 5 Hooks

678188 2U, with 5 Hooks

169950 Rack Mount Cable Manager



677844



678188



169950

Don't forget
Cage Nuts!

680000

See page 64

See Accessory Product Summary on page 54

19" WALL MOUNT CABINETS

- Pre-assembled
- Front door features a full length smoked and shatterproof glass door (t=1.7 in.) reinforced with decorative metal frame
- Pop up lock and three point locking mechanism
- Mounting brackets = (front/2ea and back/2ea) allow for flexible configuration and adjustable depth
- Multiple cable entry points on the roof and bottom of frame
- Quick release, lockable and removable side doors with slam latches and locks
- Powder coat paint finish
- Leveling feet included
- Vented top panel
- Secure, locking front and back doors with spring loaded hinges offer best accessibility; removable when connecting the cabinets
- Rigid, welded frame construction
- Sturdy steel construction
- Easy mounting, fast assembly
- Reversible doors
- Black

Technical Specifications				
Order Number	680745	680945	681245	601467
Rack Height	7U	9U	12U	16U
Maximum Width	2 ft	2 ft	2 ft	2 ft
Maximum Depth	1.5 ft	1.5 ft	1.5 ft	1.5 ft
Rack Height	12.4 in	15.8 in	21 in	28.0 in
Net Weight	47 lbs	48 lbs	55 lbs	55 lbs
Maximum Height	1.25 ft	1.5 ft	2 ft	2 ft
Weight Capacity	176 lbs	176 lbs	176 lbs	176 lbs
Standards	IEC297-1 ; IEC297-2			
Protection Class	IP20			



18.0" Depth Cabinets

Model	Height	Dimensions	Packing Type
601351	7U (12.4")	24" x 18" x 12.4"	Pre-assembled
601382	9U (15.7")	24" x 18" x 15.7"	Pre-assembled
601443	12U (21.0")	24" x 18" x 21.0"	Pre-assembled
601467	16U (28.0")	24" x 18" x 28.0"	Pre-assembled

NEW


Add
Cage Nuts
680000
Page 64

Double Cooling Fan

- Maximum load of 110 lbs.
- Four mounting points on sides
- Installation hardware included
- Material: Sheet steel
- Color: Black

601634


19" WALL MOUNT ACCESSORIES

19" Shelving

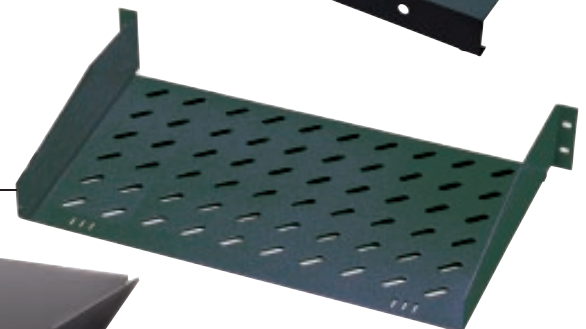
2 Point Fixed

674830 19", 1U, Solid, 13.7 in. Deep

674835 19", 2U, Solid, 13.7 in. Deep

674935 19", 2U, Solid, 13.7 in. Deep


674935



674835

DOUBLE SECTION WALL MOUNT CABINETS

The INTELLINET NETWORK SOLUTIONS™ DELUXE Line 19" Wallmount Cabinets provide a safe way of installing active and passive network components like patch panels or switches. The Wallmount Cabinets with lockable security glass door are available in several heights from 7 to 16 U and in color grey or black. The special DELUXE Line design with swinging front section provide quick mounting and easy access to 19" equipment.

- Safe way of installing active and passive network components, patch panels, switches, etc.
- Rack Height: 9 - 16 U
- Depth 450+110 mm
- Rigid frame construction, 1.5 mm to 2 mm sheet metal
- Two pairs of 19" mounting rails
- Lockable security glass door
- Optional right or left door mounting
- Cable entry points on the roof and bottom of frame
- Weight capacity 80 kg
- Protection Class IP40
- Mounting hardware included
- Grounding kit included
- Vented top panel
- Designed for easy mounting of ventilation unit
- Pre-assembled



18.0" Depth Cabinets

Model	Height	Dimensions	Packing Type
670903	9U (15.7")	24" x 18" x 15.7"	Pre-Assembled
671203	12U (21.0")	24" x 18" x 21.0"	Pre-Assembled
671603	16U (28.0")	24" x 18" x 28.0"	Pre-Assembled

Double Cooling Fan

- Maximum load of 110 lbs.
- Four mounting points on sides
- Installation hardware included
- Material: Sheet steel
- Color: Black

601634



19" WALL MOUNT ACCESSORIES

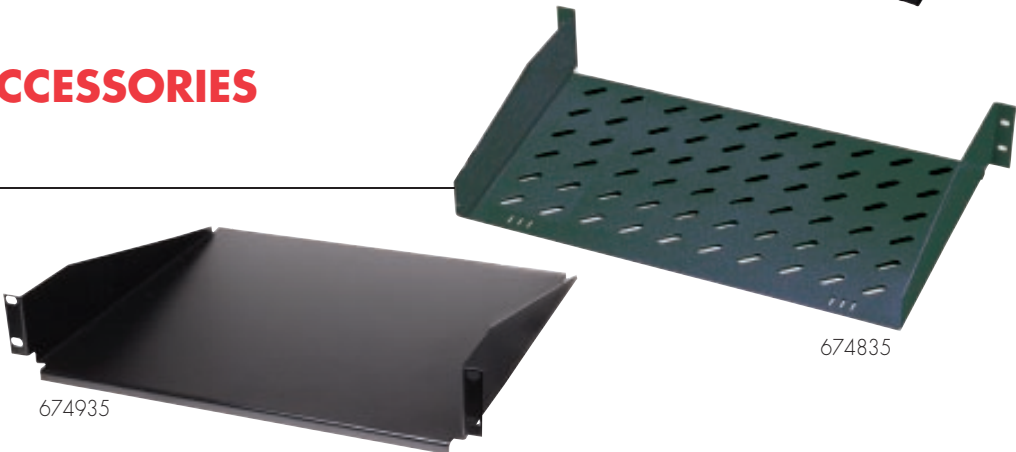
19" Shelving

2 Point Fixed

674830 19", 1U, Solid, 13.7 in. Deep

674835 19", 2U, Solid, 13.7 in. Deep

674935 19", 2U, Solid, 13.7 in. Deep



UNIVERSAL 19" ACCESSORIES

M 6 Cage Nut Set

- Includes M 6 (6 mm) Phillips Screw & Cup Washer

680000 20 sets per bag



Cable Management Panels & Rings

- Designed for 19" cabinets
- Material: Sheet steel
- Includes mounting hardware

677844 1 U, with 5 Hooks, Black

678188 2U, with 5 Hooks

169950 Rack Mount Cable Manager, 1 U

676844 Cable Management Ring, 20 Rings Per Bag

162548 Cable Organizer, Plastic

676844

162548

677844

677845

169950

Blank Panel

- Covers unused positions in 19" cabinets
- Material: Sheet steel

670001 1 U

670002 2 U

670004 4 U

680003

Rack Mount 19" Power Strip

- For use with open racks and enclosures
- 9 Outlet with surge
- 19"
- Cord Length 15 ft.
- 15 A, 120 V

671509

Sliding Keyboard Drawers

- Lockable drawer for keyboards up to 16 in. wide
- Fits all INTELLINET NETWORK SOLUTIONS cabinets and racks
- Material: Sheet Steel

673001 1 U, keyboard not included

165723 1 U, includes keyboard and trackball

165723

Sliding Storage Drawer

- 18.9" Deep
- Lockable
- Black

673002 2U, keyboard not included

673002

UNIVERSAL 19" ACCESSORIES

Rack Mount ATX Case

- Fits any standard 19" rack or enclosure
- 4 U rack mount case
- Drive space for 5.25" x 3 (exposed), 3.5" x 1 (exposed) and 3.5" x 2 (hidden)
- 18" deep (add 2" for handles)
- Ball-Bearing Cooling Fan, 12 cm
- 300 W UL power supply included
- Black

169240



Slide Rails for 169240

- Slide Rails for mounting in cabinets or open racks
- Fit any standard 19" rack or enclosure

166654



Rack Mount UPS

- Advanced protection against power outages, sags, surges and line noise
- RISC-based microprocessor maintains proper charge, provides consistent power output and helps extend battery life
- Built-in expansion slot for optional MANHATTAN SNMP Module 168236
- Automatic voltage regulation (AVR), cold start capability and diagnostics
- 1120 Joules telephone/fax and network surge protection
- Circuit breaker protection offers quick recovery from overload and short circuit events
- LED and audible alert system and power management software help monitor critical functions
- \$100,000 connected equipment guarantee (US and Canada only)
- Lifetime Warranty, UPS; Three-year Warranty, battery

168205



Hinged Wall Bracket

- For use with most 19" patch panels
- Each level is individually hinged
- Screws included
- Black

402439 1 U

402446 2 U

402453 3 U

402460 4 U

402477 6 U



402446



402477

10" WALL MOUNT CABINET & ACCESSORIES

10" Wall Mount Cabinet

- 8U h
- Pre-assembled
- Front door features a full length smoked and shatterproof glass door reinforced with decorative metal frame
- Two 10" adjustable mounting brackets
- Multiple cable entry points on roof and bottom of frames.
- Easily re-mountable
- Powder coat paint finish
- Load carrying capacity: 35 lbs.
- Vented top panel
- Rear panel can be used as a mounting plate
- Sturdy steel construction
- Black
- Can be used as free standing

671006



10" Shelf

- 1U Component Shelf
- Includes one pair of mounting angles for front mounting
- Easy to install
- Material: Sheet steel
- Color: Black 10" cabinet
- 8 Inch depth
- 1U height

671001



10" Blanks

- Covers unused positions in the cabinets
- 1U
- Material: Sheet steel
- Black

671000



Cable Management Rings

- Designed for all 19" cabinets
- Material: Sheet steel
- Bag contains 20 rings
- Color: Black

676844



10" 12 Port Patch Panel

- Fits 10 Inch cabinet
- 1U height

167642



10" Blank Patch Panel

- 8 port
- 1U
- Material: Sheet steel
- Accepts any standard keystone jacks
- Black

671045



Introducing... CanShell™ Retail Cable Packaging

Environmentally **GREEN**

Recyclable, Reusable, Easy Open & Close

NEARLY 5 TIMES MORE PRODUCT ON A SLAT WALL!

Twist to Open

Securely holds contents yet permits easy repacking without heat-sealing or special equipment

Cutaway Illustrations and Photography

Reveal the quality construction of the cable and connector

Lifetime Warranty on All Cables

The strongest quality statement any manufacturer can make

Multi-Lingual

Features are listed in English, German, Spanish, French, Italian and Polish

Sales Callouts

Focus customer attention on key cable and connector features

Versatile

Stacks neatly, ships economically, reusable to store small parts



CAT5E UTP NETWORK CABLE, 350MHZ

RJ-45 Male/RJ-45 Male, Molded Boot, Snagless

LENGTH	GREY	BLACK	BLUE
1 ft.	392037	392099	392143
3 ft.	392068	392105	392150
7 ft.	392044	392112	392167
10 ft.	392051	392129	392174
14 ft.	392082	392136	392181



CAT6 UTP NETWORK CABLE

RJ-45 Male/RJ-45 Male, Molded Boot, Snagless

LENGTH	GREY	BLACK	BLUE
1 ft.	392198	392242	392297
3 ft.	392204	392259	392303
7 ft.	392211	392266	392310
10 ft.	392228	392273	392327
14 ft.	392235	392280	392334



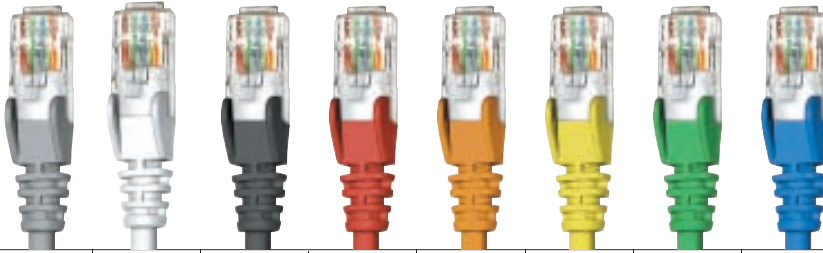
TYPICAL CLAMSHELL PACKAGE
25 facings x 2 deep = 50 Products

NEW CANSHELL PACKAGE
48 facings x 5 deep = 240 Products



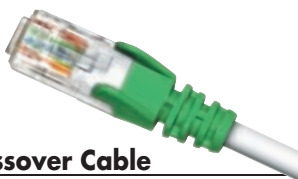
CAT5e UTP PATCH CABLES

Unshielded Twisted-Pair Patch Cable with Molded Boots (UTP) Cat5e



- UL listed, certified Cat5e tested
- EIA/TIA approved
- Unique snagless boots
- 350 MHz

LENGTH	GREY	WHITE	BLACK	RED	ORANGE	YELLOW	GREEN	BLUE
0.5 ft.	345590	347167	347310	347327	347334	347341	347358	347365
1 ft.	345606	347181	347440	347457	347464	347471	347488	347495
1.5 ft.	318228	318082	318143	318198	338238	325165	318167	318129
3 ft.	318921	320672	320740	318952	338455	318969	318945	318938
5 ft.	336628	338370	338387	338394	338431	338424	338417	338400
7 ft.	318976	320689	320757	319300	338288	319744	318990	318983
10 ft.	319768	320696	320764	319799	338295	319805	319782	319775
14 ft.	319812	320702	320771	319843	338301	319850	319836	319829
25 ft.	319867	320719	320788	319898	338318	319966	319881	319874
50 ft.	319973	320726	320795	320603	338325	320610	319997	319980
75 ft.	337335	338486	338493	338516	338547	338530	338523	338509
100 ft.	320627	320733	320801	320658	338332	320665	320641	320634
150 ft.	345514	347143	347259	347266	347273	347280	347297	347303



Cat5e Crossover Cable

- 329378** 3 ft
- 329385** 7 ft
- 329392** 10 ft
- 329446** 14 ft
- 329750** 25 ft
- 329408** 50 ft
- 329873** 100 ft



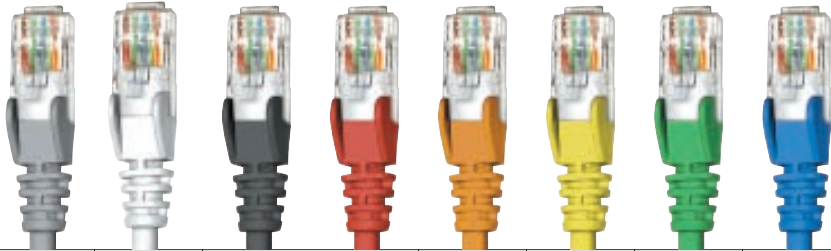
Unique Jacket

Exclusive polymer technology provides unsurpassed durability and flexibility.

View Our Retail Packaging on page 67.

CAT6 UTP PATCH CABLES

Unshielded Twisted-Pair Patch Cable with Molded Boots (UTP) Cat6



- UL listed, certified Cat6 tested
- EIA/TIA approved
- Unique snagless boots

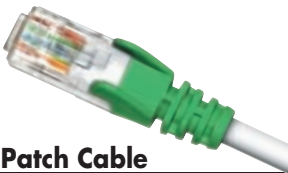
LENGTH	GREY	WHITE	BLACK	RED	ORANGE	YELLOW	GREEN	BLUE
0.5 ft.	347174	347372	347389	347396	347402	347419	347426	347433
1 ft.	340526	347501	343312	343329	347518	344920	344845	343282
1.5 ft.	340427	341936	342032	342131	342230	342339	342469	342568
3 ft.	340373	341943	342049	342148	342247	342346	342476	342575
5 ft.	340380	341950	342056	342155	342254	342353	342483	342582
7 ft.	334112	341967	342063	342162	342261	342360	342490	342599
10 ft.	334129	341974	342070	342179	342278	342377	342506	342605
14 ft.	340410	341981	342087	342186	342285	342384	342513	342612
25 ft.	336758	341998	342094	342193	342292	342391	342520	342629
50 ft.	336772	342001	342100	342209	342308	342407	342537	342438
75 ft.	341820	342018	342117	342216	342315	342445	342544	342421
100 ft.	340557	342025	342124	342223	342322	342452	342551	342414
150 ft.	345507	347136	347198	347204	347211	347228	347235	347242

Impedance Matched

Wire and connectors are carefully matched to virtually eliminate echoing and cancellation, guaranteeing high-speed, error-free data transmission.

Strain Relief

Dynamic molded design adds strength while sustaining maximum flexibility even under extreme conditions.



Cat6 Crossover Patch Cable

- 341196 3 ft
- 341202 7 ft
- 341219 10 ft
- 341226 14 ft
- 341233 25 ft
- 341240 50 ft
- 341257 100 ft

Gold Plated Contacts

24k gold plating eliminates corrosion and provides maximum conductivity to ensure data integrity.

Snag-Free Boot

Prevents cable tangling and broken connector retaining clips when pulling cable.

View Our Retail Packaging on page 67.





Cat5e, UTP, 24 AWG

Model	Type	Color
325899	Solid	Grey
333078	Solid	White
329248	Solid	Black
321877	Solid	Red
322058	Solid	Orange
329224	Solid	Yellow
329217	Solid	Green
327749	Solid	Blue

NEW

NEW

NEW

NEW

NEW

Cat6, UTP, 24 AWG

Model	Type	Color
334136	Solid	Grey
337786	Solid	White
322065	Solid	Black
322089	Solid	Red
322188	Solid	Orange
322072	Solid	Yellow
322195	Solid	Green
344432	Solid	Blue

NEW

NEW

NEW

NEW

NEW

NEW

NEW

Stranded, UTP, 24 AWG

Model	Type	Color
326032	Cat5e	Grey
334143	Cat6	Grey

Plenum, Solid, UTP

Model	Type	Color
305488	Cat5e, 24 AWG	Grey
309004	Cat5e, 24 AWG	White
303729	Cat5e, 24 AWG	Yellow
309851	Cat5e, 24 AWG	Blue
312356	Cat6, 23 AWG	Grey
341189	Cat6, 23 AWG	Blue

RG6 Cable, 18 AWG

- PVC jacket
 - 75 Ohm CATV satellite cable
 - Solid core
 - Foil and braid shield
- 345866** 1,000 ft., Quad Shield



Coax Connectors

- "F" Connector, Crimp, RG6
- 338349** RG6, Crimp Type





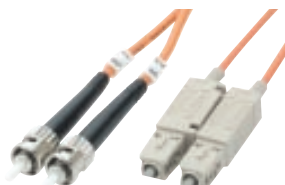
**Build to
Specification
Available**

Description: Fiber Optic Patch Cable SC/SC Duplex, MM 62.5/125 L=1m Part No: 515808			
Item ID:	LL:	0.10 dB	0.16 dB
1048848B1360003AGX		0.12 dB	0.08 dB
Spec:	R.L.:		
PC446DMP001			

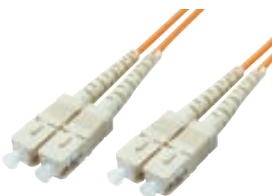
All INTELLINET NETWORK SOLUTIONS fiber optic cables are tested for quality with individual results packaged with each cable. All cables are designed and built in the manufacturer's ISO certified and UL approved plants. More than 1,000 highly skilled employees stand behind our Lifetime Guarantee of quality workmanship and materials. We build fiber optic cables to your specification. Volume pricing is available. Call your representative.



ST/ST



ST/SC



SC/SC



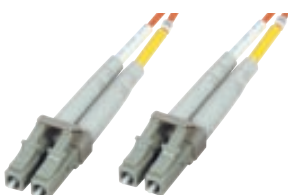
ST/MTRJ



SC/MTRJ



LC/SC



LC/LC



LC/ST

ST/ST Fiber Optic Patch Cable

515757	3.5 ft
515764	7 ft
511216	10 ft
510325	17 ft
515771	33 ft

SC/ST Fiber Optic Patch Cable

515788	3.5 ft
515795	7 ft
510349	10 ft
510356	17 ft
515801	33 ft

SC/SC Fiber Optic Patch Cable

515818	3.5 ft
515825	7 ft
511308	10 ft
510332	17 ft
515832	33 ft

ST/MTRJ Fiber Optic Patch Cable

516105	3.5 ft
516112	7 ft
511575	10 ft
516136	17 ft
516143	33 ft

SC/MTRJ Fiber Optic Patch Cable

516051	3.5 ft
516068	7 ft
511377	10 ft
516082	17 ft
516099	33 ft

LC/SC Fiber Optic Patch Cable

471251	3.5 ft
471268	7 ft
471275	10 ft
471282	17 ft
471299	33 ft

LC/LC Fiber Optic Patch Cable

470308	3.5 ft
470315	7 ft
470322	10 ft
470339	17 ft
471244	33 ft

LC/ST Fiber Optic Patch Cable

471305	3.5 ft
471312	7 ft
471329	10 ft
471336	17 ft
471343	33 ft

Fiber Optic Adapters

514736	SC to SC, Duplex
514767	SC to ST, Duplex
514705	ST to ST, Duplex

- Compatible with both 110 and Krone punch down tools
- Supports 22 to 26 AWG stranded and solid wire
- Ideal for Ethernet, Fast Ethernet, and Gigabit Ethernet network applications
- Connects RJ-45 ports to a network
- Meets 19" rackmount standards

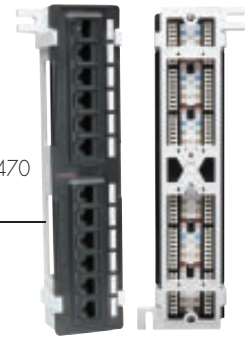
Wall-mount Patch Panels

- Solid and reliable terminations for copper cabling featuring a minimum of 3 mm 50 micro-inch gold plated jack contacts

162470 Cat5e, 12 Port, UTP

560269 Cat6, 12 Port, UTP

162470



Standard Patch Panels

- Solid and reliable terminations for copper cabling featuring a minimum of 3 mm 50 micro-inch gold-plated jack contacts

513531 Cat5e, 12-Port, UTP, 1U

403016 Cat6, 12-Port, UTP, 1U

513548 Cat5e, 16-Port, UTP, 1U

519526 Cat6, 16-Port, UTP, 1U

513555 Cat5e, 24-Port, UTP, 1U

520959 Cat6, 24-Port, UTP, 1U

513562 Cat5e, 32-Port, UTP, 2U

403023 Cat6, 32-Port, UTP, 2U

513579 Cat5e, 48-Port, UTP, 2U

560283 Cat6, 48-Port, UTP, 2U

513586 Cat5e, 96-Port, UTP, 4U,



513531



520959



513579

Angled Patch Panels

- Solid and reliable terminations for copper cabling featuring a minimum of 3 mm 50 micro-inch gold-plated jack contacts
- Modules angled at 45° to increase the cable bend radius

510417 Cat5e, 12-Port, UTP, 1U

513227 Cat6, 12-Port, UTP, 1U

513111 Cat5e, 16-Port, UTP, 1U

513388 Cat6, 16-Port, UTP, 1U

513128 Cat5e, 24-Port, UTP, 1U

513395 Cat6, 24-Port, UTP, 1U

513135 Cat5e, 32-Port, UTP, 2U

513432 Cat6, 32-Port, UTP, 2U

513166 Cat5e, 48-Port, UTP, 2U

513456 Cat6, 48-Port, UTP, 2U



510417



513395



513166

Color-Coded Patch Panels

- Solid and reliable terminations for copper cabling featuring a minimum of 3 mm 50 micro-inch gold-plated jack contacts
- Connectors are color coded in groups of six to simplify cable identification

513678 Cat5e, 24-Port, UTP, 1U

513692 Cat6, 24-Port, UTP, 1U

513685 Cat5e, 48-Port, UTP, 2U

513739 Cat6, 48-Port, UTP, 2U



513678



513685

Shielded Patch Panels

- Solid and reliable terminations for copper cabling featuring a minimum of 3 mm 50 micro-inch gold-plated jack contacts
- 90° Top-entry punch-down blocks simplify installation

513470 Cat5e, 16-Port, FTP, 1U

513609 Cat6, 16-Port, FTP, 1U

513487 Cat5e, 24-Port, FTP, 1U

560276 Cat6, 24-Port, FTP, 1U

513517 Cat5e, 48-Port, FTP, 2U

513616 Cat6, 48-Port, FTP, 2U



513470



513517

Fiber Patch Panel

- 19" Fiber ST Patch Panel/Splice Box

162821 Cat5e, 24 Port, 1 Level



Blank Patch Panel

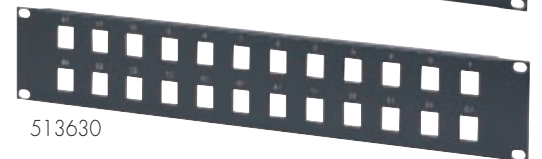
513593 Cat5e, 16 Port, 1 Level

513630 Cat5e, 24 Port, 2 Level

513654 Cat5e, 48 Port, 3 Level



513593



513630

Cable Management Panels & Rings

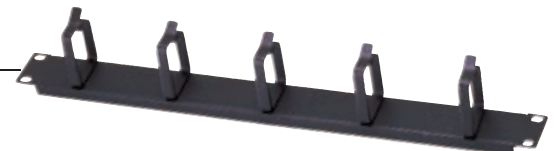
- Designed for 19" cabinets
- Material: Sheet steel
- Black

677844 1 U, with 5 Hooks

678188 2U, with 5 Hooks

169950 Rack Mount Cable Manager

676844 Cable Management Ring



677844



678188



169950



676844

Blank Panel

- Covers unused positions in 19" cabinets
- Material: Sheet steel

670001 1 U

670002 2 U

670004 4 U

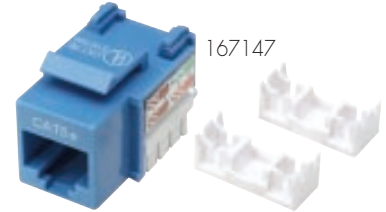


670003

KEYSTONE JACKS

- Punch-Down type
- Compatible with 110 and Krone punch down tools
- Cat5e performance is in compliance with ANSI/TIA/EIA 568 B.2 standard
- Cat6 performance is in compliance with ANSI/TIA/EIA 568 B.2-1 standard

Includes
cable holder to
prevent strain
on contacts



	WHITE	IVORY	BLACK	BLUE	RED	GREEN	ORANGE	YELLOW
Cat5e	166942	166935	167116	167147	167130	167123	517461	100243
Cat6	518956	519557	519595	519588	519564	519571	519601	517997

Cat5e Keystone Jack

- Punch-Down type
- For use with fully shielded twisted pair (FTP) Cat5e cable
- Compatible with 110 and Krone punch down tools
- Cat5e performance is in compliance with ANSI/TIA/EIA 568 B.2 standard

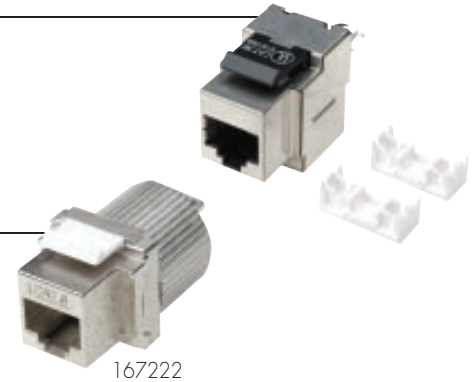
167109 FTP, Silver, Punchdown

Cat6 Twist-On Keystone Jack

- Unique "twist-on" design allows tightening by hand
- Optional tightening tool for additional torque included in carton of 50 pieces
- Cat6 performance is in compliance with ANSI/TIA/EIA 568 B.2-1 standard

167222 FTP, Silver

167062 UTP, White



Inline Coupler, Keystone Type

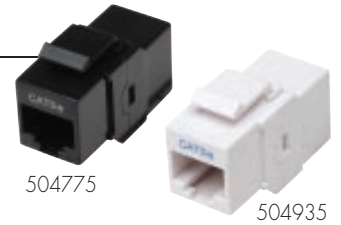
- 50 micron gold plated contacts
- For use with unshielded twisted pair (UTP) cable
- Cat5e performance is in compliance with ANSI/TIA/EIA 568 B.2 standard
- Cat6 performance is in compliance with ANSI/TIA/EIA 568 B.2-1 standard

504775 Cat5e, 8P8C Female to 8P8C Female, UTP, Black

504898 Cat6, 8P8C Female to 8P8C Female, UTP, Black

504935 Cat5e, 8P8C Female to 8P8C Female, UTP, White

505147 Cat6, 8P8C Female to 8P8C Female, UTP, White

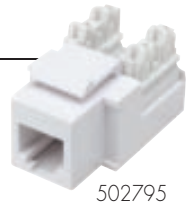


RJ11/12 Keystone Jacks

- Punch Down Type

502795 White

502719 Ivory



"F" Connector Keystone Jacks

- Standard Pass-Through for Cable/TV/DSL

167895 White

167543 Ivory



WIRE TIES

Standard Wire Ties

- Weather resistant
- UL recognized

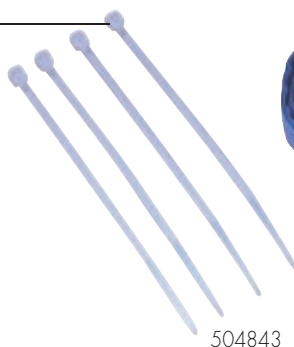
504850 5 1/2" x 1/8", 100 pcs/pack

504843 8" x 1/16", 100 pcs/pack

504881 11" x 3/16", 100 pcs/pack

518345 30 ft, hook & loop

518260 5 pack, hook and loop, assorted colors



MODULAR PLUGS

Modular Plugs in Jar

- Use for patch cable assembly
- Gold plated contacts

RJ11/RJ12

502320 RJ11/RJ12, 3 μ , 200-Pack

Cat5e

502399 Cat5e, RJ45, UTP, 15 μ , 3-Prong, Solid, 100-Pack

502375 Cat5e, RJ45, UTP, 3 μ , 2-Prong, Stranded, 100-Pack

Cat6

503006 Cat6, RJ45, UTP, 15 μ , 3-Prong, Solid, 100-Pack

502344 Cat6, RJ45, UTP, 15 μ , 2-Prong, Stranded, 100-Pack

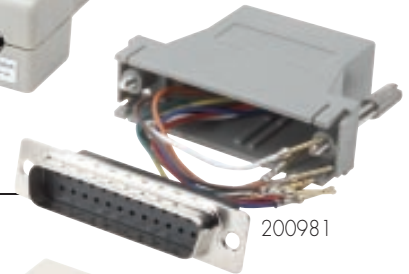
502320

502375



RS232 to RS422/485 Converter

150361 DB25F to RJ11/6P6C



200981

MODULAR ADAPTERS

Modular Adapters

200981 DB25 Male to RJ-45

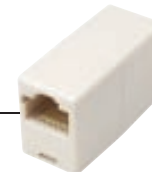
201162 DB9 Female to RJ-45

MODULAR ADAPTERS

Standard Modular In-line Coupler

UTP

504225



504225

Shielded Modular In-line Coupler

UTP, White

504768 Cat5e

505130 Cat6



504768



504751

Unshielded Modular In-line Coupler

UTP, White

504720 Cat5e

504751 Cat6



505147

Cat6 Keystone Jack Type Modular In-line Coupler

UTP, White, Unshielded

505147



Modular Distributor

504195 2 port, Double Shielded



512381

Junction Boxes

- Punch-Down type
- For use with shielded twisted pair (FTP) cable
- Compatible with 110 and Krone punch down tools
- Cat5e performance is in compliance with ANSI/TIA/EIA 568 B.2 standard
- Cat6 performance is in compliance with ANSI/TIA/EIA 568 B.2-1 standard

512114 Cat5e, FTP, Silver

512381 Cat6, FTP, Silver



MOUNTING BOXES

Wall Plate Mounting Brackets

518338 Flush, Metal, Single Gang

Wall Boxes

517867 Wall Box 1.45 inch Depth

517874 Wall Box 1.89 inch Depth

Surface Mount Boxes

- Uses Any Standard Keystone Jack

162722 Ivory, 1 Port

162739 White, 1 Port

162845 Ivory, 2 Port

162852 White, 2 Port

162722

162852

517874

Surface Mount Boxes with Jacks

100120 1 Port, Cat5e

100137 2 Port, Cat5e

100144 6 Port, Cat5e

100601 8-Port, UTP, White

100618 8-Port, UTP, Ivory

100625 8-Port, UTP, Ivory

100632 8-Port, UTP, White

100649 8-Port, FTP, Grey

100656 8-Port, FTP, Grey

NEW

NEW

NEW

NEW

NEW

NEW



100656

WALL PLATES

Flush Mount Plates

- Fits Standard Gang Boxes
- Uses Any Standard Keystone Jack

163286 White, 1 Outlet, Flush Mount

163293 White, 2 Outlet, Flush Mount

163309 White, 3 Outlet, Flush Mount

163316 White, 4 Outlet, Flush Mount

163323 White, 6 Outlet, Flush Mount

162654 Ivory, 1 Outlet, Flush Mount

162838 Ivory, 2 Outlet, Flush Mount

162944 Ivory, 3 Outlet, Flush Mount

162951 Ivory, 4 Outlet, Flush Mount

162968 Ivory, 6 Outlet, Flush Mount

163330 White, Blank Plug

163347 Ivory, Blank Plug



CABLE TESTERS

Enhanced Network Cable Tester, RJ-45

- With the Enhanced Network Cable Tester you can test RJ-45 (UTP/STP) cabling with enhanced function for the following standards: EIA/TIA, 568A, 568B, 356A and Token Ring
- Supports the following tests: Wire continuity, type of cabling, shielded (UTP/STP)
- Includes protective leather pouch

350136



Multi Modular Cable Tester, RJ-11/RJ-12/RJ-45

- Test modular functions with RJ-11, RJ-12 and RJ-45 with 4/6/8 termination
- Testing before and after installation possible
- Includes protective leather pouch

350129



Professional Network Cable Tester, RJ-45/BNC

- LEDs for each wire
- Pin configuration easy to read
- Test: RJ-45, RJ-11 (UTP/STP) and BNC for the following standards: EIA/TIA 356A, EIA/TIA, 568A/B, AT&T258A, and Token Ring
- Features auto or manual scan for pin out indicators
- Includes 2 x BNC adapter cable, 1 x BNC M/M adapter, 1 x RJ-45 modular cable
- Includes protective leather pouch

503044



Remote Multi-Cable Tester with Auto Shutoff

- The remote cable tester checks the cable before and after installation. The tester offers easy one-step operation. 14 LEDs confirm testing status and shut off automatically to maximize power saving.
- Testing... RJ-45 = USOC 4/6/8, 10Base-T, EIA/TIA 568 A/B, AT&T258A, Token Ring, BNC
- LEDs = Testing, short, connection, non-parallel 25/50 Ohm termination, screening each conductor
- Includes protective leather pouch
- Auto Shutoff

350143



Tone Generator and Probe

- Two position switch for single or multi-tone signal
- LEDs for line polarity, continuity and voltage
- Testing leads and modular cables for individual wire tests or modular jack tests
- Plastic tip to prevent accidental shorts
- Trace or identify wire or cables in a bundle or group

515566



Professional All-In-One Cable Tester

- LEDs for each wire
- Pin configuration easy to read
- Test (TX/RX): DB9, DB15, DB25, HDB15, Centronics 36, BNC, RJ-45, USB A, USB B (optional), 1394 (optional)
- Features auto or manual scan for pin out indicators

350174



LAN Identification Cable Tester

An essential tool for verifying and troubleshooting local area networks. The compact style designed provides optimal convenience and portability! Simply push the "Test" button and see:

- If the cable or jack is connected to a hub or network card
- If the hub or network card work in full- or half-duplex
- If the default link speed of the hub or network card is 10 or 100 Mbps

258807



The Ultimate Tool Kit

20 Pieces:

- Remote cable tester
- Digital multimeter
- Fish tape, 50 ft.
- RJ-45 crimp/cut tool
- Impact punch down tool
- Disposable punch down tool
- Slip-joint pliers
- Adjustable wrench
- Long needle-nose pliers
- Wire cutters
- Coaxial cable stripper
- Surface cutter
- Scissors
- Electrical tape
- Measuring tape
- Utility knife
- Cable stripper
- Flat blade screwdriver
- Phillips head screwdriver
- 2 x 25 ft. of Cat5 cable
- Rugged and stylish metal carrying case

110006



Professional Modular Installation Kit

- Includes heavy duty crimp tool for RJ-11, RJ-12 & RJ-45
- Made of hardened carbon steel
- High-impact plastic briefcase
- Includes assortment of RJ connectors
- Can be used for RJ-11, RJ-12, RJ-45, Cat5e cabling
- Ratcheting tool for a consistent crimp every time

501811



Universal Tool Kit

145 Pieces:

- Mini vacuum cleaner with attachments
- Soldering iron, solder wick and solder
- Ratchet driver with 57 interchangeable ends
- Assorted crimp-on wire connectors
- Hammer
- Flashlight
- 9 piece allen wrench set
- Brush
- 6 sizes of precision screw drivers (Phillips and flat head)
- Precision hobby knife
- Wire ties
- Wire cutters
- Needle nose pliers with built in wire cutter
- Wire stripper
- Crimper
- Antistatic chip inserter
- Antistatic chip extractor
- Antistatic three prong parts & chip retriever/extractor
- Antistatic chip tweezers
- 2 AA batteries
- Magnetic telescoping pick up tool
- Electric voltage tester

530217



Technician's Tool Kit

17 Pieces:

- Soldering iron, solder wick, and solder
- Antistatic chip inserter, antistatic chip extractor, antistatic threeprong parts & chip retriever/extractor, antistatic chip tweezers
- Needle nose pliers
- Extra parts tube
- 1/4" nut-driver
- 3/16" nut-driver
- T10 & T15 torque screwdriver
- (2) Phillips head screwdrivers: small and standard
- (2) Flat head screwdrivers: small and standard

530071



Basic Computer Tool Kit

13 Pieces:

- Antistatic chip inserter, antistatic chip extractor, antistatic three prong parts & chip retriever/extractor, antistatic chip tweezers
- 1/4" nutdriver
- 3/16" nut driver
- T-15 star-type screwdriver
- #1 Phillips screwdriver, #0 Phillips screwdriver
- 3/16 slotted screwdriver, 1/8" slotted screwdriver
- extra parts tube
- Vinyl zipper case

400077



CRIMP TOOLS

Modular Crimp Tool

- Modular crimping tool for cutting, stripping and crimping

501835 For RJ-45

509312 For RJ-11, RJ-12 and RJ-45

501835

Ratcheting Modular Crimp Tool

- Made of hardened carbon steel
- Cuts, strips and crimps
- Ratcheting action

502702 For RJ-11, RJ-12, RJ-14 and RJ-45, can be used with 4/6/8 pin connectors
Includes screwdriver and additional wire stripper

410441 For RJ-45 Unshielded Connectors

530019 RJ-11, RJ-12, RJ-14 and RJ-45, can be used with 6/8 pin connectors

530019

502702

Coaxial Crimp Tool

- Ratcheting
- Crimps RG6/RG58/RG59/RG62

515863

TOOLS

Disposable Impact Tools

504539 For 110 Block with Stripper

Terminal Block Impact Tool

- Metal impact tool for 110/88 terminal blocks and keystone jacks with adjustable impact pressure control

504546

Fish Tape

520843 50 ft.

23-In-1 Multi-Function Ratchet Screw Driver Kit

- Includes bits, sockets & socket adapter
- Easy open, rugged storage handle
- Ratchet functions: Lock, clockwise & counter clockwise
- High torque construction

410045



MODEL NUMBER INDEX

100120	76	318938	68	338394	68	342544	69	392280	67	503273	31	515801	71	530019	79
100137	76	318945	68	338400	68	342551	69	392297	67	503280	30	515818	71	530071	78
100144	76	318952	68	338417	68	342568	69	392303	67	503297	30	515825	71	530217	78
100243	74	318969	68	338424	68	342575	69	392310	67	503303	49	515832	71	545006	44
100601	76	318976	68	338431	68	342582	69	392327	67	503327	49	515863	79	545013	44
100618	76	318983	68	338455	68	342599	69	392334	67	503358	15	516051	71	545020	44
100625	76	318990	68	338486	68	342605	69	400077	78	503389	5, 6, 7, 12, 14	516068	71	545037	44
100632	76	319300	68	338493	68	342612	69	402439	65	503433	36	516082	71	545044	44
100649	76	319744	68	338509	68	342629	69	402446	65	504195	75	516099	71	545068	44
100656	76	319768	68	338516	68	343282	69	402453	65	504225	75	516105	71	545075	44
110006	78	319775	68	338523	68	343312	69	402460	65	504539	79	516112	71	550000	9
150057	34	319782	68	338530	68	343329	69	402477	65	504546	79	516136	71	550123	12
150361	75	319799	68	338547	68	344432	70	403016	72	504720	75	516143	71	550192	31
156059	50	319805	68	340373	69	344845	69	403023	72	504751	75	517317	32	550215	24, 31
156066	50	319812	68	340380	69	344920	69	410045	79	504768	75	517461	74	550253	5
156127	45	319829	68	340410	69	345507	69	410441	79	504775	74	517867	76	550260	4
156721	51	319836	68	340427	69	345514	68	470308	71	504843	74	517874	76	550314	6
156738	51	319843	68	340526	69	345590	68	470315	71	504850	74	517997	74	550321	6
156745	50	319850	68	340557	69	345606	68	470322	71	504881	74	518260	74	550338	7
156752	50	319867	68	341189	70	345866	70	470339	71	504898	74	518338	76	550345	7
156899	51	319874	68	341196	69	347136	69	471244	71	504935	74	518345	71	550376	9
157025	50	319881	68	341202	69	347143	68	471251	71	505130	75	518956	74	550383	8
157032	50	319898	68	341219	69	347167	68	471268	71	505147	74, 75	519069	53	550673	12
157858	51	319966	68	341226	69	347174	69	471275	71	505314	25	519151	52	550680	12
162470	72	319973	68	341233	69	347181	68	471282	71	506694	40	519526	72	550710	8
162548	64	319980	68	341240	69	347198	69	471299	71	508018	13	519557	74	560269	72
162654	76	319997	68	341257	69	347204	69	471305	71	509015	26, 33	519564	74	560276	73
162722	76	320603	68	341820	69	347211	69	471312	71	509039	33	519571	74	560283	72
162739	76	320610	68	341936	69	347228	69	471329	71	509312	79	519588	74	601351	62
162821	73	320627	68	341943	69	347235	69	471336	71	509510	34	519595	74	601382	62
162838	76	320634	68	341950	69	347242	69	471343	71	510325	71	519601	74	601443	62
162845	76	320641	68	341967	69	347259	68	500401	29	510332	71	520317	39	601467	62
162852	76	320658	68	341974	69	347266	68	500418	29	510349	71	520331	39	601498	56
162944	76	320665	68	341981	69	347273	68	500425	29	510356	71	520409	40	601504	55
162951	76	320672	68	341998	69	347280	68	500432	27	510417	72	520416	40	601511	60
162968	76	320689	68	342001	69	347297	68	500449	28	510486	53	520423	40	601528	56
163286	76	320696	68	342018	69	347303	68	500456	39	510493	53	520522	34	601535	55
163293	76	320702	68	342025	69	347310	68	500517	26	510509	53	520577	33	601542	56
163309	76	320719	68	342032	69	347327	68	500753	48	510523	53	520843	79	601559	55
163316	76	320726	68	342049	69	347334	68	500852	48	510530	53	520959	72	601573	56
163323	76	320733	68	342056	69	347341	68	500869	48	510547	53	521383	28	601580	55
163330	76	320740	68	342063	69	347358	68	500913	34	510554	52	521413	27	601597	56
163347	76	320757	68	342070	69	347365	68	500920	47	511216	71	521444	8, 12	601603	55
165723	64	320764	68	342087	69	347372	69	501262	34	511308	71	521475	33	601634	62, 63
166654	65	320771	68	342094	69	347389	69	501507	26, 33	511377	71	521482	26, 33	601672	57
166935	74	320788	68	342100	69	347396	69	501538	28	511575	71	521499	25	601689	59
166942	74	320795	68	342117	69	347402	69	501545	25	512114	75	521550	33	602105	61
167109	74	320801	68	342124	69	347419	69	501620	49	512381	75	521567	26, 33	602112	61
167116	74	321877	70	342131	69	347426	69	501668	25	513111	72	521574	33	670001	64, 73
167123	74	322058	70	342148	69	347433	69	501682	26	513128	72	521680	29	670002	64, 73
167130	74	322065	70	342155	69	347440	68	501699	25	513135	72	521970	36	670004	64, 73
167147	74	322072	70	342162	69	347457	68	501712	13	513166	72	522113	29	670903	63
167222	74	322089	70	342179	69	347464	68	501811	78	513227	72	522120	29	671000	66
167543	74	322188	70	342186	69	347471	68	501835	79	513388	72	522137	29	671001	66
167628	60	322195	70	342193	69	347488	68	501903	24	513395	72	522144	29	671006	66
167642	66	325165	68	342209	69	347495	68	502184	25	513432	72	522175	29	671045	66
167895	74	325899	70	342216	69	347501	69	502191	26	513456	72	522328	34	671074	59
168205	65	326032	70	342223	69	347518	69	502207	23	513470	73	522496	13	671075	59
169240	65	327749	70	342230	69	350129	77	502245	34	513487	73	522533	34	671203	63
169950	61	329217	70	342247	70	350136	77	502290	27	513517	73	522595	36	671509	64
169950	64, 73	329224	70	342254	69	350143	77	502306	27	513531	72	522618	40	671603	63
172714	11	329248	70	342261	69	350174	77	502313	28	513548	72	522755	24	672661	58
172721	11	329378	68	342278	69	370677	51	502320	75	513555	72	523080	42	673001	64
173261	12	329385	68	342285	69	370684	51	502344	75	513562	72	523110	43	673002	64
176224	10	329392	68	342292	69	370691	51	502375	75	513579	72	523127	43	673266	56
176248	10	329408	68	342308	69	392037	67	502399	75	513586	72	523219	42	673601	60
176279	11	329446	68	342315	69	392044	67	502528	48	513593	73	523240	17, 24	673661	58
176293	11	329750	68	342322	69	392051	67	502535	49	513609	73	523301	36	674002	62, 63
176309	11	329873	68	342339	69	392068	67	502566	23	513616	73	523318	36	674200	60
176323	10	333078	69	342346	69	392082	67	502641	31	513630	73	523431	23	674201	60
176330	11	334112	69	342353	69	392099	67	502702	79	513654	73	523455	23, 32	674261	58
200981	75	334129	69	342360	69	392105	67	502788	34	513678	72	523462	32	674768	56
201162	75	334136	70	342377	69	392112	67	502795	74	513685	72	523493	37	674801	60
205009	51	334143	70	342384	69	392129	67	502887	25	513692	72	523523	42	674830	57, 59, 61, 62, 63
205016	51	336628	68	342391	69	392136	67	502894	15	513739	72	523530	42	674835	57, 59, 61, 62, 63
207003	48	336758	69	342407	69	392143	67	502900	15	514705	71	523547	42	674935	57, 59, 61, 62, 63
258807	77	336772	69	342414	69	392150	67	502917	14	514736	71	523554	42	676035	57, 61
303729	70	337335	68	342421	69	392167	67	502931	15	514767	71	523561	49	676844	64, 66, 73
305488	70	337786	70	342438	69	392174	67	502948	45	515320	53	523578	49	677453	57, 59, 61, 62, 63
309004	70	338238	68	342445	69	392181	67	503044	77	515337	53	523608	32	677844	61, 64, 73
309851	70	338288	68	342452	69	392198	67	503082	14, 24	515344	53	523615	32	678052	57, 61
312356	70	338295	68	342469	69	392204	67	503099	47	515351	53	523646	37	678054	57, 61
318082	68	338301</													

Provide Instant Internet Access for Your Guests While Keeping Your Network Secure



**LIFETIME
WARRANTY**

GUESTGATE™ Internet Access Device

WINNER: INNOVATION OF THE YEAR!

GUESTGATE
Internet Access Device

"The Industry Achievement Awards is one of Florida's most prestigious programs for the recognition of achievement in business, technology and innovation."

-TBTF



TAUPE BAY TECHNOLOGY FORUM ANNUAL
INDUSTRY ACHIEVEMENT AWARDS

All names of products or services mentioned herein are trademarks or registered trademarks of their respective owners. Distribution and reproduction of this document, use and disclosure of the contents herein are prohibited, unless specifically authorized.
Lifetime Warranty: MANHATTAN and INTELLINET NETWORK SOLUTIONS products are warranted against defects in material and workmanship for as long as they are owned by the original purchaser. See your local dealer for repair or replacement.

Copyright © 2007

WE'VE GOT IT ALL!

INTELLINET NETWORK SOLUTIONS products have been designed to work together, and to provide you with solutions for your customers. For example, connect your Pro Series Network Cameras to the PoE Web-Smart Switch, and there is no need to install electrical power outlets for the cameras to plug into.

In a campus environment, or when building to building communications are required, you can also supply the Wireless Access Point with electrical power, and using a high gain outdoor antenna, arrange for the images that the network cameras capture to be transmitted to a different building for recording, viewing, and storage.

All of these products are available as INTELLINET NETWORK SOLUTIONS products, and are therefore covered under the Lifetime Warranty. This allows you to guarantee the performance of the entire solution as opposed to focusing only on the individual products offered. Critical applications such as security surveillance demand high availability using reliable solutions that have been created using products that have been tested together and verified for compatibility and maximum performance.

The network diagram below illustrates a configuration used at one location in a possible multi-building environment. As you can see, all of the products in the diagram are available under INTELLINET NETWORK SOLUTIONS. For specific barcodes, please contact your account manager.



No other manufacturer offers such an extensive line of both Active and Passive Networking products, all with a Lifetime Warranty.

www.intellinet-network.com