

SERIES 3000 - KEY SWITCHES

TO 30 mA 28 V

PRODUCT FEATURES

- ◆ With one or two normally open contacts switching in sequence
- ◆ By separating the mechanical and electrical components, a high contact reliability and excellent actuating characteristic are achieved
- ◆ Connections sealed
- ◆ For direct or indirect actuation

ON REQUEST

- ◆ Available with centrally placed LED (only version with a pressure point)
- ◆ Different actuator caps

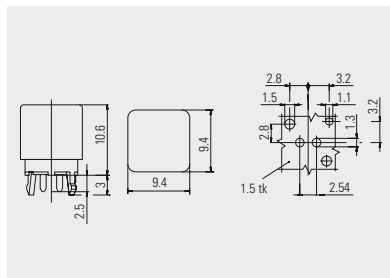


Mechanical life endurance	1E5 2E4 (basic type 3003 - two pressure points)
Ambient temperature	-40 °C ... +85 °C
Material	actuator: PC / POM housing: PA glass fiber-reinforced connections: tinned
Contact material	Au
Contact distance	< 3 mm

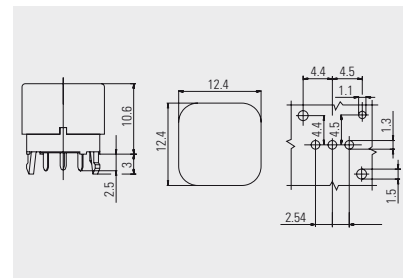
	30 mA 28 V	Connection type	Operating force in N	Operating position (OP) in mm	Free position (FP) max. in mm	Permissible total travel position (TP) in mm	Miscellaneous	Stock version
Double normally open contact with 2 pressure points								
3003.0451	●	⌋	5 - 7	9.8 +0.3 -0.2	10.9	8.6	operating force 2: 11 - 14 N operating position 2: 8.9 +0.3 -0.2	
Normally open contact with 1 pressure point								
3000.0452	●	⌋	5 - 7	9.8 +0.3 -0.2	10.9	9.2		



Basic types 3000 and 3003



Normally open contact with one pressure point
3000.0452



Double normally open contact with two pressure points
3003.0451

ROCKER SWITCHES
PUSHBUTTON SWITCHES
TOGGLE SWITCHES
SLIDE SWITCHES
ROTARY SWITCHES
FOOT SWITCHES
POWER TOOL SWITCHES
TACT AND KEY SWITCHES
SNAP-ACTION SWITCHES
MICRO-SIGNAL SWITCHES
SENSORS