

## Technical highlights.

The thermal imager testo 869 stands out thanks to its easy operation, and convinces with its technical features:

**160  
X  
120**

19,200 temperature measurement points (160 x 120 pixels) for high image quality and correct measurement results.



See more thanks to a 3.5" display.

**NETD  
<120 mK**

The thermal resolution of < 120 mK, makes even small temperature differences visible.



Focus-free 34° lens for a large image section and an ideal overview.



Easy and intuitive operation for getting started right away.



Critical temperatures are directly displayed thanks to automatic hot-cold-spot recognition.



Robust design for applications in tough surroundings.



Thermal images can also be saved as JPEGs.



Convenient size for flexible use.



Pro software for image evaluation on a PC.

## Product information.

### Technical data

Infrared resolution	160 x 120 pixels
Thermal sensitivity (NETD)	< 120 mK at +30 °C
Field of vision/min. focusing distance	34° x 26° / < 0.5 m (fixed focus)
Geometric resolution (IFOV)	3.68 mrad
Focus	Fixed focus
Image display	3.5" LCD with 320 x 240 pixels
Measuring range	-20 to +280 °C
Accuracy	±3 °C, ±3 % of m.v.
Lens	34° x 26°

### Ordering data

	Order no.	
<b>testo 869 thermal imager</b> including Pro software, USB cable, mains unit and Li-ion rechargeable battery.	0560 8690	
High-quality transport case	0516 8700	
Holster case	0554 7808	
Additional lithium ion rechargeable battery for extending the operating time.	0515 5100	
Table charging station for optimising the charge time.	0554 1103	
Adhesive tape e.g. for shiny surfaces (roll, L.: 10 m, W.: 25 mm), ε = 0.95, temperature-resistant up to +250 °C	0554 0051	

298X 413X/msp/01:2016 Subject to change, including technical changes, without notice.



Our new imager:  
Small in price –  
big in function.

Now available from your expert dealer

# Your new tool.

The new thermal imager testo 869:  
Belongs in every toolbox. Fits the budget.

We measure it.



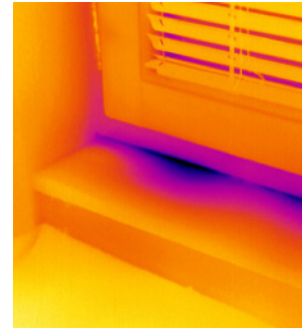
**testo 869** – accurate, robust,  
fast and reliable.

The thermal imager testo 869 offers high-quality thermography at an affordable price, and was developed together with our customers for a contractor's everyday jobs. It combines all indispensable requirements for a high-quality thermographic measurement, and belongs in every toolbox.

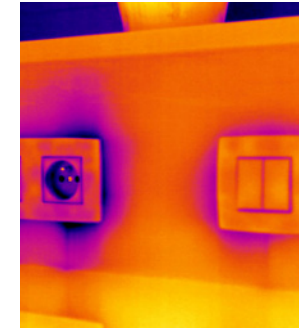


**Detect leakages, localize cold bridges or visualize overheated connections:**

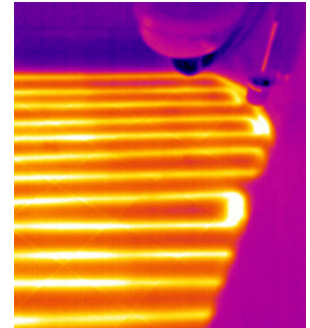
The thermal imager testo 869 has been optimized for daily maintenance and installation in contracting – for time-saving quality assurance and reliable production checks.



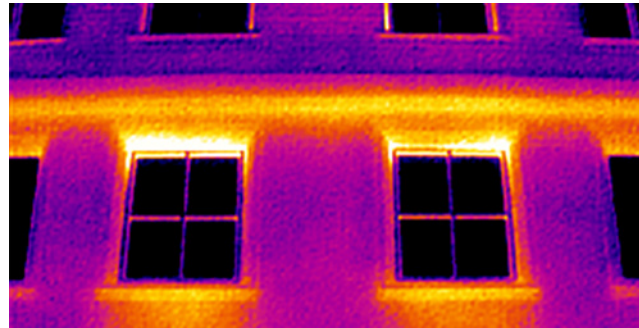
Visualizing cold bridges at windows and window niches.



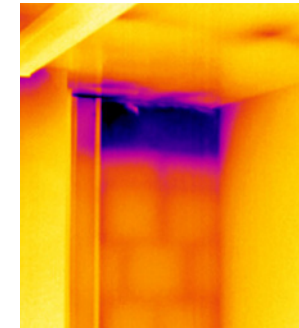
Detecting faulty seals and visualizing heat losses.



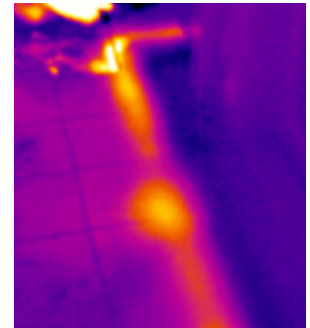
Visualizing underfloor heating lines.



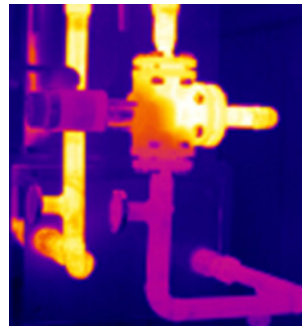
Demonstrating heat losses at insufficiently insulated radiator niches.



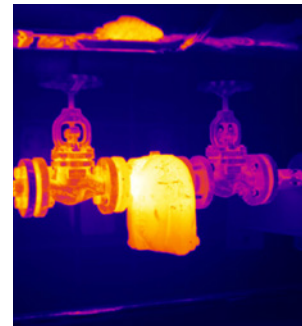
Finding and competently demonstrating moisture damage in buildings.



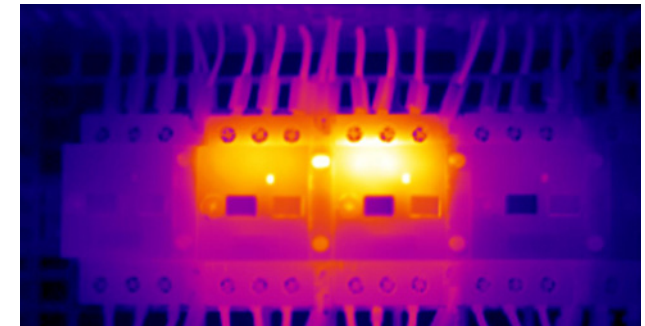
Localizing leaks from water pipes.



Examining flow and return temperatures on radiators and installations.



Testing steam separators or hot steam pipes for functionality.



Identifying defective electrical components and initiating preventive measures.

We measure it.

