

KNIPEX Quality – Made in Germany



KNIPEX TubiX® Pipe Cutter

Faster, easier and more precise cutting

NEW: pipe cutting using only one hand



**QuickLock
single-handed
quick adjust-
ment:**

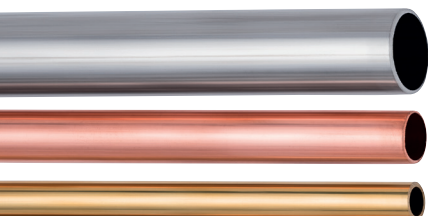
Precise positioning,
independent holding
and clamping on
the tube

KNIPEX TubiX® Pipe Cutter

With one hand only: cuts copper, brass or stainless steel quickly and easily

- ▶ QuickLock single-handed quick adjustment: slide on, cut – finished!
- ▶ Easy one-handed pushing for quick adjustment to different tube sizes
- ▶ Comfortable: easy cutting due to high-quality needle bearings in the cutting wheel and guide rolls

- > Cuts pipes from Ø 6 - 35 mm (1/4" - 1 3/8") with wall thickness up to 2 mm
- > Cutting wheel made of high-grade ball-bearing steel
- > Practical quick replace system for the cutting wheel – with spare wheel stored under the feeding barrel
- > With precision-ground deburring tool, easy to remove
- > Light and durable metal enclosure of magnesium



For cutting copper, brass and stainless steel pipes with wall thickness up to 2 mm and diameters of 6-35 mm (1/4"-1 3/8")



90 31 02

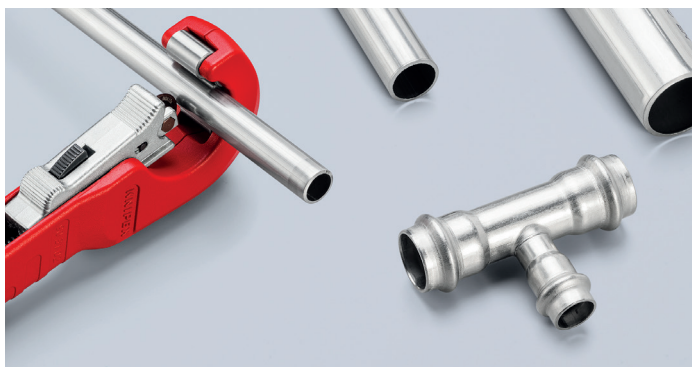
NEW
PAT. PEND.



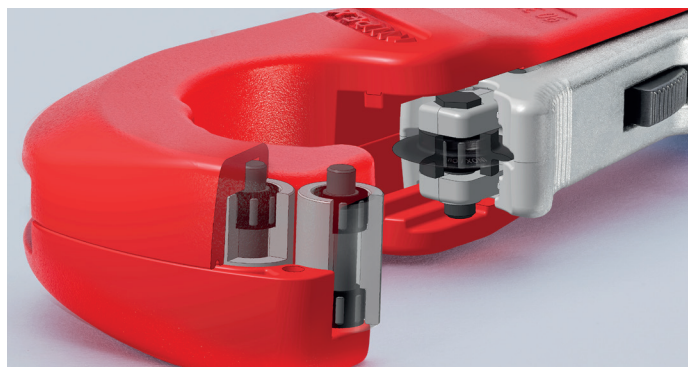
The needle-beared and spring-loaded cutting wheel made of high-quality ball bearing steel is easily exchangeable



The spring-loaded cutting wheel can be pushed and fixed on the diameter of the pipe with the single-handed quick adjustment



Speed in everyday operation: the QuickLock single-handed quick adjustment enables the cutting wheel to slide onto any pipe diameter with a single press of the thumb



High-quality needle bearings enable the cutting wheel and the four guide rollers to operate virtually without any friction during the cutting – cuts stainless steel pipes with particular ease

Four steps to success – how the KNIPEX TubiX® pipe cutter helps you in your work



Cutting now made easy: position the opened KNIPEX TubiX®...



Push the cutting wheel against the pipe with the QuickLock single hand quick adjustment: fastest adjustment to different pipe diameters



Tighten and cut with a swift twist and then readjust using the ergonomic blue feeding barrel...



and you're done! If necessary, have the edge smoothed out using the fold-out deburring tool – with surprisingly little effort

Article No.	EAN	↔	Ø mm	Ø Inch	g
90 31 02 SB	084686	260	6 - 35	1/4" - 1 3/8"	375
90 31 02 BK	084907	260	6 - 35	1/4" - 1 3/8"	375
90 39 02 V01	085874	Cutting wheel INOX Cu for KNIPEX TubiX® 90 31 02			8
90 39 02 V02	085881	Deburring tool for KNIPEX TubiX® 90 31 02			7