

Dino-Lite
Digital Microscope
The Industry Standard

DINO-LITE PRODUCT RANGE FOR:

JEWELERS, WATCHMAKERS,
GEMOLOGISTS AND DIAMOND
DEALERS



APPLICATIONS

The Dino-Lite digital microscopes are tailored for a broad range of user groups. In the diamond, watch and jewelry business the following target groups can be distinguished:

- > Watch repair and manufacturing
- > Gemologists
- > Diamond jewelers and traders
- > Diamond cutters
- > Jewelers
- > Gemstone collectors

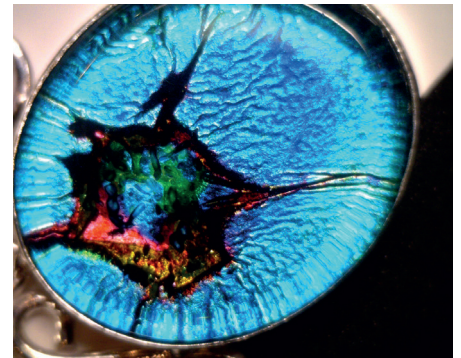
A PROFESSIONAL SOLUTION

Professional solution for inspection, quality control, classifying and working on jewelry, watches, diamonds and gemstones. The series with long working distance of up to 15 cm enables the user to work under the microscope. The built-in adjustable polarizer helps to reduce glare on shiny objects. Available in composite and full aluminum alloy housing.

A POWERFUL TOOL

Dino-Lite has developed a special range of microscopes and accessories, tailored to fit the needs of the jewelry industry. Specially designed polarized lighting makes it an ideal solution for inspection and working on jewelry, watches or precious stones. Bundled with the DinoCapture for Windows or DinoXcope for Macintosh software, the Dino-Lite is a very powerful and easy to use tool.

THE POLARIZER GIVES CRYSTAL CLEAR IMAGES, EVEN WHEN WORKING WITH SHINY OBJECTS

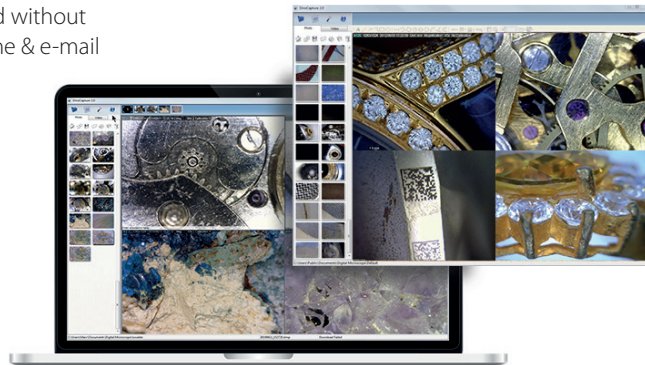


DINO-LITE SOFTWARE

More info: www.dino-lite.eu/support/software

ADVANCED SOFTWARE INCLUDED

A professional, reliable software environment is essential when working with computer accessories like a USB microscope. All Dino-Lite USB products are equipped with an in-house developed software suite. The Dino-Capture software is continuously developed, is free of charge for Dino-Lite users and has an automatic update feature. DinoCapture software is available for Windows and DinoXcope for Macintosh computers. DinoCapture software is intuitive, user-friendly and can be used without hardly any training. Free online & e-mail software support is available.



LANGUAGES

The DinoCapture 2.0 software is available in many languages, such as: English, German, French, Spanish, Chinese, Japanese, Portuguese, Italian, Russian, Dutch, Greek, Hungarian, Polish, Romanian, Swedish, Finnish, Danish, Czech, Croatian, Norwegian, Turkish.

MAIN SOFTWARE FEATURES

- > Capturing photographs, videos or time-lapsed videos
 - > Saving pictures in several formats
 - > Advanced image processing
 - > Measurement options like: line, radius, circle, 3-point circle, angle, etc.
 - > Measurements on captured images or on live images
 - > Calibration options
 - > E-mail integration
 - > Adding notes and markings on images
 - > Skype integration for real-time on-line sharing with suppliers, customers or colleagues
 - > Connect multiple Dino-Lite microscopes
 - > Controlling lighting options from the software
 - > IP functionality for remote viewing of microscopic images
 - > Barcode/QR code recognition functionality
 - > GPS integration
-

AM4815ZTL

The main features of the AM4815ZTL are:

1.3 Megapixel sensor | USB 2.0 connection | 10-140x magnification
 Long Working Distance (LWD) | Adjustable integrated polarizer
 8 white switchable white LEDs | Extended Depth of Field (EDOF)
 Extended Dynamic Range (EDR) | Extensive measurement functionality
 Calibrated measurements | Exchangeable caps.



1.3 MEGAPIXEL
1280 x 1024



USB 2.0



CONTINUOUS
~10x-140x



4-15 cm

LONG WORKING
DISTANCE



POLARIZER
ANTI-REFLECTION



8 WHITE LEDs
SWITCHABLE



EDOF

EXTENDED
DEPTH OF FIELD



EDR

EXTENDED
DYNAMIC RANGE



MEASUREMENT
FUNCTIONALITY



EXCHANGEABLE
CAP

AM7915MZTL

The main features of the AM7915MZTL are:

5 Megapixel sensor | USB 2.0 connection | 10-140x magnification
 Long Working Distance (LWD) | Adjustable integrated polarizer
 8 white switchable white LEDs | Metal housing | Flexible LED Control
 (FLC) | Extended Depth of Field (EDOF) | Extended Dynamic Range
 (EDR) | Automatic Magnification Reading (AMR).



5 MEGAPIXEL
2592 x 1944



USB 2.0



CONTINUOUS
~10x-140x



4-15 cm

LONG WORKING
DISTANCE



POLARIZER
ANTI-REFLECTION



8 WHITE LEDs
SWITCHABLE



METAL
HOUSING



FLC

FLEXIBLE
LED CONTROL



EDOF

EXTENDED
DEPTH OF FIELD



EDR

EXTENDED
DYNAMIC RANGE



AMR

AUTOMATIC
MAGNIFICATION
READING