

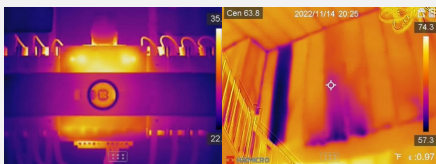
M SERIES

Advanced thermal imaging camera with full function analysis



Multiple Product Options

M series products provide wide-angle and manual focus options. The manual focus with a larger focal length option (without "W") is ideal for electrical, HVAC, and mechanical inspection where focusing on specific components is critical. The "W" series features a fixed focus wide FOV making them ideal for scanning walls, floors, and large-scale items.

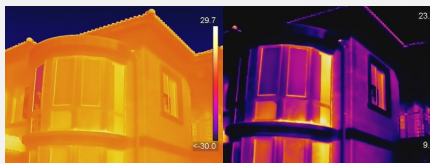


Without "W"

With "W"

1-Tap Level & Span

Quickly highlights the area of the image you are interested in by narrowing the span with one tap on the **3.5" LCD touchscreen**, instantly improving image contrast and highlighting potential problems.



Auto Level & Span

Manual / 1-Tap Level & Span

Interchangeable Battery System

Includes **2 interchangeable Li-ion batteries** and a dual bay charger to provide you with **up to 12 hours** of operation. You can stay powered up for even the longest inspections.



2 interchangeable Li-ion batteries



On-camera Analysis

Offers 17 measurement rules, 7 color alarm palettes and 4 image modes for powerful on-camera analysis.



Camera Interface

Intuitive 3.5" LCD Touch Screen or interactive buttons to easily navigate to any function. Use either or both!



Multiple Image Annotations

Leave text or audio annotations within the images instead of taking notes by hand, helping to improve inspection efficiency and productivity.

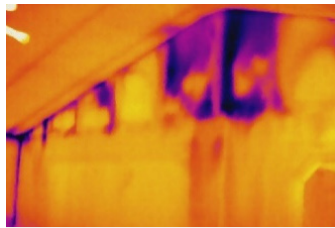
APPLICATIONS



Check Electrical



Check Underfloor Heating



Check Building Insulation



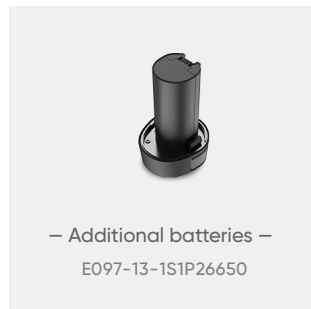
Check Mechanical Status

WHAT'S IN THE BOX

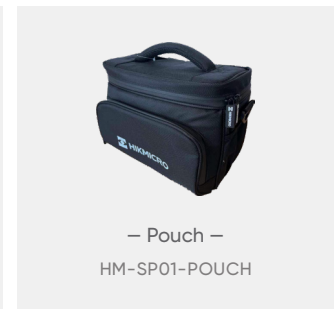


- Thermal Imager with Wrist Strap
- Interchangeable and Rechargeable Li-ion Batteries (x2)
- Power Supply for Battery Charger
- Two-bay Battery Charger
- International Use Plugs (US/EU/UK/AU) for Power Supply (x4)
- USB 2.0 A to USB Type-C Cable
- Hard Carrying Case
- Calibration Certificate / Quick Start Guide
- 16GB Micro SD card(M10/M20/M20W) / 64GB Micro SD card(M30)

OPTIONAL ACCESSORIES



– Additional batteries –
E097-13-1S1P26650



– Pouch –
HM-SP01-POUCH



– Replacement Charger –
HM-5202ZC

Model No		M11W	M11	M20W	M20	M30	
Infrared Image	IR Resolution	192 × 144 (27,648 pixels)			256 × 192 (49,152 pixels)		384 × 288 (110,592 pixels)
	NETD	< 40 mK (@ 25 °C, F#=1.0)					< 35 mK (@ 25 °C, F#=1.0)
	Image Frequency	25 Hz					
	Field of View (FOV)	37.5° × 27.9°	18.75° × 14.1°	50° × 37.2°	25° × 18.8°	37.5° × 28.5°	
	Minimum Focus Distance	0.5 m (1.64 ft)	0.1 m (0.33 ft)	0.5 m (1.64 ft)	0.1 m (0.33 ft)	0.2 m (0.65 ft)	
	Focus Mode	Focus Free	Manual Focus	Focus Free	Manual Focus	Manual Focus	
Image Display	Visual Camera	3264 × 2448 (8 MP)					
Measurement and Analysis	Object Temperature Range	-20 °C to 550 °C (-4 °F to 1022 °F)					
	Accuracy	Max (±2°C/3.6°F, ±2%), for the ambient temp. 15°C to 35 °C (59 °F to 95 °F) and object temp. above 0 °C (32°F)					
General	Wi-Fi	802.11 b/g/n (2.4 GHz and 5 GHz)					
	Battery Operating Time	Approx. 6 hours	Approx. 6 hours	Approx. 6 hours	Approx. 6 hours	Approx. 4 hours	

HIKMICRO Thermography

info@hikmicrotech.com

hikmicro_thermography

support@hikmicrotech.com

HIKMICRO Thermography

HIKMICRO

