

## The new 4<sup>th</sup> Generation of the SECUTEST Series

**SECUTEST**  
SAFETY | **BASE**  
TESTER

**BASE10**  
TESTER

**XTRA**  
TESTER



### Safe, Complete and Efficient

### Testing of the Electric Safety of

- ▲ Electric equipment per DIN VDE 0701-0702 (EN 62638 Draft) including extension cables and PRCDs
- ▲ Electric medical instruments per DIN EN 62353
- ▲ Arc welding equipment per DIN EN 60974-4

# Performance According to Standards, Laws and Regulations Made Easy

The testing of the electric safety on electric equipment is required in many environments. Based on laws and regulations of government, user entities and insurance providers, this is a requirement. These tests must be performed for the safety of operators after each repair or as part of protective measures at regular intervals. The testers of the new SECUTEST family allow the electric technician a safe and easy test performance as well as documentation of the tests according to the applicable standards:

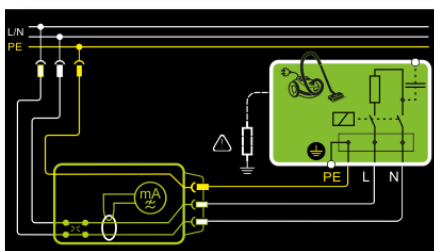
- ➔ 8 test sequences for fast testing of simple devices
- ➔ an universal, selectable test sequence
- ➔ a test sequence performed by single measurements



## Highlights:

- ▲ An all new data management and data storage concept for automatic test sequences and single measurements for up to 50,000 data records
- ▲ Most comfortable operation with dual turn selector switch, direct push buttons and soft keys
- ▲ High-resolution and brilliant 4.3" TFT color display
- ▲ Unique multiple measurement allows easy recording of several measurement points
- ▲ Automatic recognition of DUT connection and safety class
- ▲ Compact and shock-proof housing based on integrated rubber protection
- ▲ Most complete test report generation in compliance of standards
- ▲ State-of-the-art interfaces for data entry (2x USB A) and data exchange (1x USB B)
- ▲ Comprehensive settings for international use  
(language, keyboard layout, character set, date / time)

## Screenshots – Samples of Backlit Multiple Display:



Help – principle and wiring diagram

Test Item	Result
ShortedCheck L-N	✓
Vis. Insp.	✓
RPE	≤ 300 mΩ 5 mΩ ✓
RINS PC I	≥ 1.00 MΩ > 300 MΩ ✓
IPE LN	≤ 3.50 mA 5 μA ✓

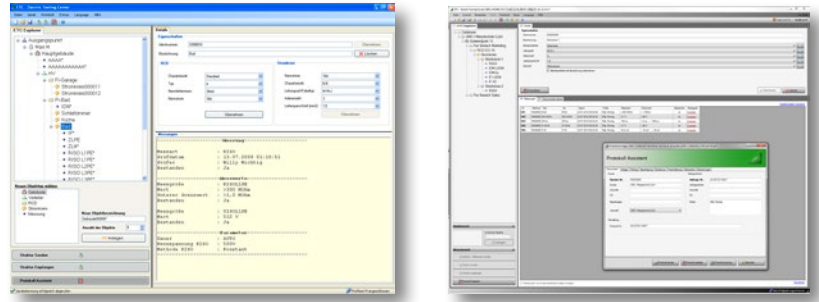
Test result of a test sequence

Date	Standard	Test Item
30/08/2013	VDE0701-0702	
01/09/2013	VDE0701-0702	
02/09/2013	VDE0701-0702	
03/09/2013	RINS	
06/09/2013	RPE	
06/09/2013	IPE	
21/10/2013	IT	
21/10/2013	FT	

Database structure – list of test results

# ETC Documentation Software

ETC offers many supporting functions for data acquisition and data management as well as documentation of the performed tests.



## Accessories

- ▲ Thermal printer with special paper for long lasting results
- ▲ Barcode reader / barcode printer
- ▲ Three-phase adapter (active/passive)
- ▲ Adapter for three-phase extension cables
- ▲ Diverse sensor cables
- ▲ Calibration adapter
- ▲ Pouches and cases

## SECUTEST Type Selection

<p><b>SECUTEST</b>   <b>XTRA</b> SAFETY   TESTER</p>	<p>Model No. <b>M7050-.....*</b></p>	<p><b>Custom specific version with choice of</b></p> <ul style="list-style-type: none"> <li>➤ User guidance language</li> <li>➤ Country specific version of mains power cable and test socket</li> <li>➤ Language of Calibration Certificate DAkkS</li> </ul>
<p><b>SECUTEST</b>   <b>BASE</b> SAFETY   TESTER</p>	<p>Model No. <b>M7050-V001</b></p>	<p><b>Preconfigured Version</b></p> <ul style="list-style-type: none"> <li>➤ German user guidance</li> <li>➤ Schuko mains power cable und Schuko test socket</li> <li>➤ DAkkS Calibration Certificate in D-GB-FR</li> </ul>
<p><b>SECUTEST</b>   <b>BASE10</b> SAFETY   TESTER</p>	<p>Model No. <b>M7050-V002</b></p>	<p><b>Preconfigured Version</b></p> <ul style="list-style-type: none"> <li>➤ German user guidance</li> <li>➤ Schuko mains power cable and Schuko test socket</li> <li>➤ 200 mA and 10 A test current for protective conductor testing</li> <li>➤ DAkkS Calibration Certificate in D-GB-FR</li> </ul>

\* Please see data sheet for configuration codes at [www.gossenmetrawatt.com/secutest](http://www.gossenmetrawatt.com/secutest)



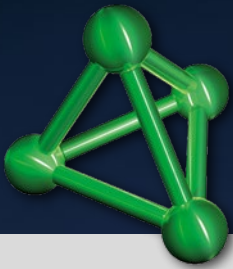
# GOSSEN METRAWATT

## GMC-I Messtechnik GmbH

Südwestpark 15 ▪ 90449 Nürnberg ▪ Germany

Phone: +49 911 8602-111 ▪ Fax: +49 911 8602-777

[www.gossenmetrawatt.com](http://www.gossenmetrawatt.com) ▪ [info@gossenmetrawatt.com](mailto:info@gossenmetrawatt.com)



Free download of app via this QR code  
or directly via iTunes: