



**Systems for Storage  
and Production Facilities**

## **Imprint**

### **WEZ Kunststoffwerk AG**

Industriestrasse 8  
CH-5036 Oberentfelden

Phone +41 62 737 88 00  
info@wez.ch  
www.wez.ch  
www.scherer-group.com

Catalogue: «Systems for Storage and Production Facilities»  
Version: **January 2019**  
Graphics/printing: ZT Medien AG, 4800 Zofingen

printed in  
**switzerland**

---

# WEZ Kunststoffwerk AG

A Scherer Group company

*Let us show you that*

**«Pleasure in the job puts perfection in the work».**

*Aristoteles*

We have been shaping logistics solutions for over 60 years. You can put your trust in our employees, who work enthusiastically, creatively and with typical Swiss precision every day to satisfy our customers.

In this catalogue, you will find over 1000 items that will help you arrange your processes or workplace organization more efficiently, more comfortably or simply just more safely or more reliably.

Let one of our sales specialists provide you with inspiration or our team of experienced engineers help design your customised load carriers in plastic. We develop and produce high-quality plastic load carriers, containers and accessories in Germany, Italy and Switzerland at our three production locations and our own toolmaking plant.









# Management of stackable containers



## Storage

- The stackable containers have a uniquely small taper of 2 mm which means there is optimal filling or utilisation of the storage space.
- The containers are suitable for manual or automated handling depending on the container type and the design of the base.
- The loading of the container depends on the design of the base and can be between 10 and 65 kg.
- To meet specific requirements for storage space, handling and transport, we recommend our customised solutions with perfectly matched dimensions and properties.



## Transport equipment

- Perforated containers provide good ventilation or cooling.
- Closed containers protect the contents against dust and to some extent against spray or contamination.
- Ideal for bulk or packaged food-stuffs, semi-finished products in manufacturing plants, consignment of goods in e-commerce, storage of small parts and handling of textiles.
- RFID or barcode labelling, hot embossing or engraving identify your load carriers perfectly.



## ESD protection

- Blackline and Newbox Black products offer ideal ESD protection.
- ESD protection is very important, particularly where there are seasonal variations and low humidity.
- Attention is increasingly being given to ESD protection when it comes to the service and maintenance of vehicles, plant and machinery.



## Packaging

- There are always appropriate foam or deep-drawn inserts available for every case to give optimal protection.
- Ideal self-organisation.
- Missing parts are recognised immediately.
- Packaging cases for high-grade electrical and measuring equipment.
- Case systems can also be used, for example, to create ESD-compliant environments during service and maintenance.



# Technical information



## Cleaning

- Suitable for fully automated washing systems up to 120 °C.
- Resistant to ultrasound.
- Suitable for stationary units.
- Suitable for mobile units.
- Resistant to all common detergents.
- We will gladly send you recommendations from suppliers and service providers on request.



## Recycling

- Polypropylene is completely recyclable.
- Within a specifically defined loop, recycling has no difficulty conforming to food regulations and is harmless.
- During re-granulation residues, labels or printing are removed completely in a reliably controlled process.
- The cost of recycling is comparable to that for new items or even cheaper depending on the price basis.



## Customised solutions

- Do you have any specific requirements or would you like to equip your storage system with customised load carriers? We will gladly design this for you and implement the solution with the help of our own tool and die shop.
- All our products are UV-stable, antistatic and dirt-repellent.



## Standardisation

- All stackable containers offered in this catalogue conform to the current requirements of REACH and RoHS.
- Blackline and Logiline containers conform to the SGL standard, which is now integrated in GS1.
- The Newbox and Newbox Black containers conform to the DIN standard or the so-called Euro standard.
- The DIN and SGL standards are not compatible.

**Table of Contents**

<b>PCB Handling ESD</b>	<b><u>PCB HOLDER PH</u></b>	PCB handling PH .....	011
	<b><u>PRINTORAMA PA</u></b>	PCB handling PA .....	013
	<b><u>RACK-SYSTEM 100 RS</u></b>	PCB handling RS100 .....	017
	<b><u>RACK-SYSTEM 180 RS</u></b>	PCB handling RS180 .....	019
<b>Stacking containers with accessories ESD</b>	<b><u>BLACKLINE BL</u></b>	SGL-standard container conductive BL .....	029
		SGL-standard lid conductive BL .....	033
		SGL-standard case conductive BL .....	037
		Dividers conductive BL .....	041
		Foam cut-outs conductive BL .....	043
	<b><u>NEWBOX BLACK NB MC</u></b>	Euro-standard container conductive NB MC .....	047
	Euro-Norm lids conductive NB MC .....	051	
	Dividers conductive NB MC .....	053	
<b>Automatic handling ESD</b>	<b><u>AUTOMATIC BLACK AB MC</u></b>	Containers BL Futura AB MC .....	057
		Trays and tablets conductive AB MC .....	059
<b>Open-fronted storage boxes ESD (OSB)</b>	<b><u>CLASSICBOX BLACK CB MC</u></b>	Open-fronted storage boxes conductive CB MC .....	065
<b>Bins for small parts ESD</b>	<b><u>VARIOBOX BLACK VB MC</u></b>	Insert boxes conductive VB MC .....	069
	<b><u>FLIPTOPBOX BLACK FTB MC</u></b>	Hinged box conductive FTB MC .....	073
<b>Labelling &amp; Printing</b>	<b><u>LABELLING LA</u></b>	suitable for different containers .....	077
	<b><u>PRINTING PR</u></b>		076
<b>Work place</b>	<b><u>STORE ORGANISATION SO</u></b>	.....	081
	<b><u>OFFICE ORGANISATION OO</u></b>	.....	085






# PCB HANDLING ESD

Our handling systems for printed circuit boards are particularly helpful when it comes to the reliable storage and transport of your electronic components. They help you keep your components safe and protect them against electrostatic discharge. Furthermore, in combination with Blackline stackable containers the four different printed circuit board systems also safeguard the contents against mechanical damage, contamination or moisture impact.



On the following page you will find an overview of our systems for printed circuit boards. Each has its own advantages and specific characteristics.

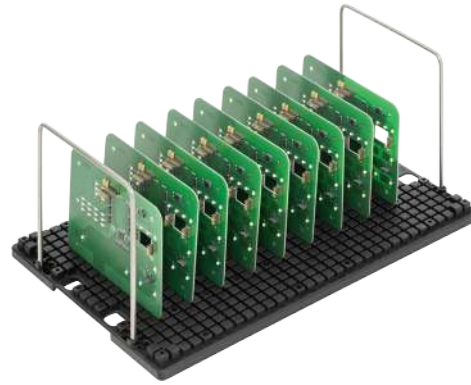
## Special types

All non-stock items are marked thus  and available on request.



## PCB Holder

- Suitable for 400×300 mm and 600×400 mm Blackline containers lengthwise and crosswise and for carrying handle for 9980.026.



## Printorama

- Suitable for 400×300 mm and 600×400 mm Blackline containers lengthwise and crosswise and for partitions lengthwise and crosswise.
- Height of slotted wall: 98 mm
- Individually adjustable to size of printed circuit board.



## Rack-System 100

- Suitable for Blackline containers:
  - 200×300 mm lengthwise
  - 400×300 mm lengthwise and crosswise
  - 600×400 mm crosswise.
- Height of slotted wall: 80 mm
- Individually adjustable to size of printed circuit board.



## Rack-System 180

- Suitable for 400×300 mm and 600×400 mm Blackline containers lengthwise and crosswise.
- Height of slotted wall: 180 mm
- Height of double-slotted wall: 345 mm
- Individually adjustable to size of printed circuit board.



# PCB HOLDER

## PCB handling PH

Printed circuit boards are kept securely in place in the PCB Holder (insertion plate) by the various location slots of every size. The printed circuit board holders provide safe and reliable transport and protection against electrostatic discharge for your goods when placed in a Blackline container.




### Applications

The PCB Holder range is ideally suited for storing and transporting electrostatic printed circuit boards.

### Tip

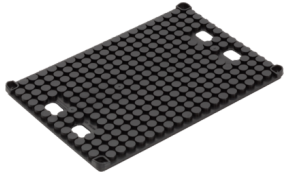
You will find the appropriate stackable containers in the Blackline section.

### Special types

All non-stock items are marked thus  and available on request.







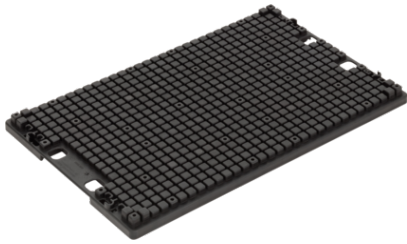
**2535.000** PCB holder

Ext. dimensions: **357x257x14 mm**

Weight: 0.42 kg

No. per pack: 28 pcs

for container 400x300 mm



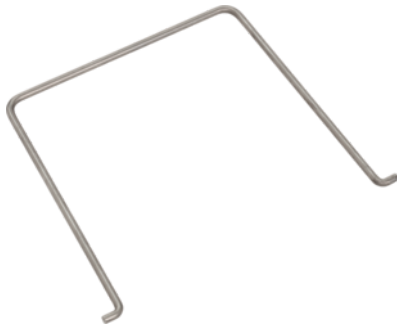
**3555.000** PCB holder

Ext. dimensions: **557x357x22 mm**

Weight: 1.62 kg

No. per pack: 8 pcs

for container 600x400 mm



**9980.026** Carrier

Ext. dimensions: **236x232 mm**

Material: Metal

for PCB holder 3555

Ø 7 mm

# PRINTORAMA

## PCB handling PA

The versatile Printorama system offers you special support during the manufacturing, storage and transport of printed circuit boards. With three finely adjustable slotted-wall elements, it is extremely flexible, can be customised and can meet every challenge. It is adaptable to your printed circuit boards whatever the size, is very easy to assemble and the system guarantees safe transport with ESD protection.



### Slot dimensions

Division = 5.06 mm  
 Width = 2.50 mm  
 Depth = 3.00 mm



### Printorama-Finder

With our Printorama Finder you can simply and easily find the right Printorama-configuration for the insertion dimension of your printed circuit boards! To do so, visit us at [www.wez.ch](http://www.wez.ch).




## Applications

The Printorama range is extremely well-suited for the storage and transport of electrostatic printed circuit boards.

## Tip

You will find suitable stackable containers in the Blackline section.

## Special types

All non-stock items are marked thus  and available on request.





**4304.700** Extension frame

Ext. dimensions: **400x300x44 mm**

Weight: 0.36 kg

No. per pack: 34 pcs

raises the useable height by 44 mm  
for container 400x300 mm



**6404.700** Extension frame

Ext. dimensions: **600x400x44 mm**

Weight: 0.45 kg

No. per pallet: 140 pcs

raises the useable height by 44 mm  
for container 600x400 mm



**4310.100** Printorama Secondo

Ext. dimensions: **335x235x98 mm**

Weight: 0.95 kg

No. per pack: 1 pcs

fitted in a container  
for container 400x300 mm



**6410.100** Printorama Secondo

Ext. dimensions: **535x335x98 mm**

Weight: 1.53 kg

No. per pack: 1 pcs

fitted in a container  
for container 600x400 mm



**4310.101** Printorama Secondo SET

Ext. dimensions: **335x235x98 mm**

Weight: 0.95 kg

No. per pack: 5 pcs

2 each dividers 400&300 mm  
and 4 Secondo profiles  
incl. assembly instructions



**6410.101** Printorama Secondo SET

Ext. dimensions: **535x335x98 mm**

Weight: 1.53 kg

No. per pack: 5 pcs

2 each dividers 600&400 mm  
and 4 Secondo profiles  
incl. assembly instructions





**2310.120** Partition 300 T5.08 (-)

Ext. dimensions: **235x10x100 mm**

Weight: 0.12 kg

No. per pack: 120 pcs

loose un-assembled

suitable for containers from H=130



**3310.120** Partition 400 T5.08 (-)

Ext. dimensions: **335x10x100 mm**

Weight: 0.18 kg

No. per pack: 86 pcs

loose un-assembled

suitable for containers from H=130



**2310.110** Partition 300 T5.08 (+)

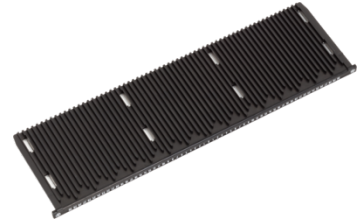
Ext. dimensions: **235x10x100 mm**

Weight: 0.12 kg

No. per pack: 120 pcs

loose un-assembled

suitable for containers from H=130



**3310.110** Partition 400 T5.08 (+)

Ext. dimensions: **335x10x100 mm**

Weight: 0.18 kg

No. per pack: 86 pcs

loose un-assembled

suitable for containers from H=130



**2310.100** Partition 300 T5.08 (=)

Ext. dimensions: **235x10x100 mm**

Weight: 0.12 kg

No. per pack: 120 pcs

loose un-assembled

suitable for containers from H=130



**3310.100** Partition 400 T5.08 (=)

Ext. dimensions: **335x10x100 mm**

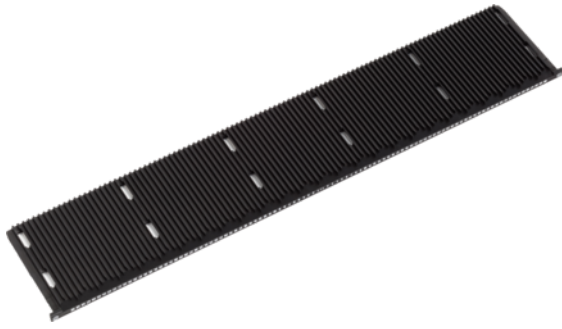
Weight: 0.18 kg

No. per pack: 86 pcs

loose un-assembled

suitable for containers from H=130





**5310.120** Partition 600 T5.08 (-)

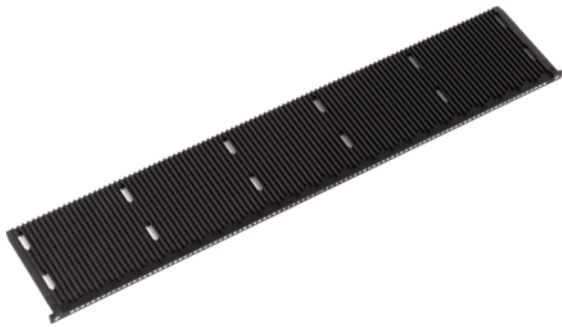
Ext. dimensions: **535x10x100 mm**

Weight: 0.27 kg

No. per pack: 54 pcs

loose un-assembled

suitable for containers from H=130



**5310.110** Partition 600 T5.08 (+)

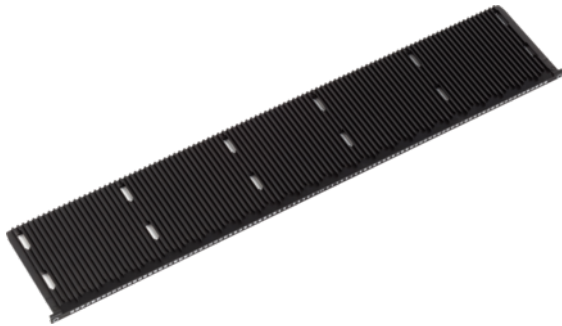
Ext. dimensions: **535x10x100 mm**

Weight: 0.27 kg

No. per pack: 54 pcs

loose un-assembled

suitable for containers from H=130



**5310.100** Partition 600 T5.08 (=)

Ext. dimensions: **535x10x100 mm**

Weight: 0.27 kg

No. per pack: 54 pcs

loose un-assembled

suitable for containers from H=130



**9980.054** Secondo-FIX-Pair

packed 10 pcs in a bag

for Printorama Secondo

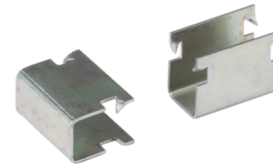


**9980.035** Secondo-Profile

Ext. dimensions: **17x17x105 mm**

loose packed in a bag

for Printorama Secondo



**9980.007** U-Clips for extension frame

Ext. dimensions: **15x11 mm**

loose, unassembled

for assembly on mounting frame

# RACK-SYSTEM 100

## PCB handling RS100

The Rack-System 100 is the simplest and most reliable way to handle printed circuit boards with ESD protection. Just like using a construction kit, you can assemble your rack system using the different possible combinations. With integrated adjusting slot for the simplest and most efficient adjustment of size. Combined with our Blackline containers, you achieve perfect protection, even during transport.



### Slot dimensions

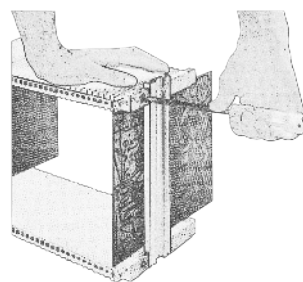
Division	=	10.16 mm
Width	=	3.50 mm
Depth	=	2.50 mm

### Quick and simple adjustment

The adjusting slot is marked with a rhombus and can be found at each end of the slot wall. It is 0.25 mm shallower than all other slots. Simply clamp the printed circuit board in the slot wall, screw the slot wall and aluminium profile, and you have already set the insertion dimension perfectly.



Figure showing slot lock




## Applications

Rack-System 100 is extremely well-suited for the storage and transport of electrostatic printed circuit boards.

## Tip

You will find suitable stackable containers in the Blackline section.

## Special types

All non-stock items are marked thus  and available on request.





**2510.000** Slotted wall pair 300

Ext. dimensions: **255x14x80 mm**

Weight: 0.26 kg

No. per pallet: 1344 pcs

No. per pack: 42 pcs

with base stop

unstrengthened

stackable up to a PCB height 80 mm



**3510.000** Slotted wall pair 400

Ext. dimensions: **355x14x80 mm**

Weight: 0.35 kg

No. per pallet: 896 pcs

No. per pack: 28 pcs

with base stop

unstrengthened

stackable up to a PCB height 80 mm



**9980.149** Rack profile-rail 156

Ext. dimensions: **156 mm**

Weight: 50 g

for container 300x200 mm

insertion crosswise

for slotted wall pair 300



**9980.149** Rack profile-rail 256

Ext. dimensions: **256 mm**

Weight: 80 g

for container 400x300 mm

insertion crosswise

for slotted wall pair 400



**9980.149** Rack profile-rail 356

Ext. dimensions: **356 mm**

Weight: 105 g

for container 400x300 mm

insertion lengthwise

for slotted wall pair 300



**9980.149** Rack profile-rail 556

Ext. dimensions: **556 mm**

Weight: 170 g

for container 600x400 mm

insertion lengthwise

for slotted wall pair 400



**9980.149** Rack profile-rail

Ext. dimensions: **x-x mm**

Weight: 298 g

cut to desired length

**Option: 9980.150**

9980.150 = length 3450 mm

for any length



**9980.152** Slot clip

packed 100 pcs in a bag

suitable for Rack-Serie 100

# RACK-SYSTEM 180

## PCB handling RS180

The Rack-System 180 is the simplest and most reliable way to handle printed circuit boards with ESD protection. Just like using a construction kit, you can assemble your rack system using the different possible combinations. With integrated adjusting slot for the simplest and most efficient adjustment of size. Combined with our Blackline containers, you achieve perfect protection, even during transport.



### Slot dimensions

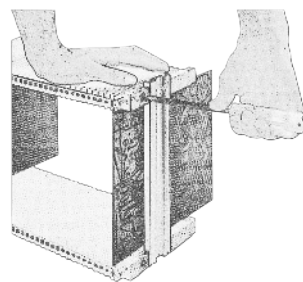
Division = 10.16 mm  
 Width = 3.50 mm  
 Depth = 2.50 mm

### Quick and simple adjustment

The adjusting slot is marked with a rhombus and can be found at each end of the slot wall. It is 0.25 mm shallower than all other slots. Simply clamp the printed circuit board in the slot wall, screw the slot wall and aluminium profile, and you have already set the insertion dimension perfectly.



Figure showing slot lock




## Applications

The Rack-System 180 is extremely well-suited for the storage and transport of electrostatic printed circuit boards.

## Tip

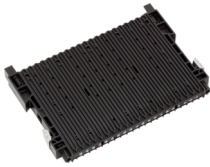
You will find suitable stackable containers in the Blackline section.

## Special types

All non-stock items are marked thus  and available on request.



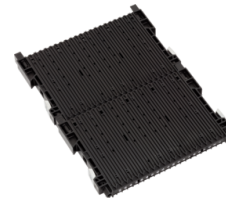




**2518.000** Slotted wall 300

Ext. dimensions: **255x22x180 mm**  
 Weight: 0.38 kg  
 No. per pallet: 1024 pcs

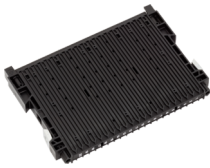
No. per pack: 32 pcs  
 without base stop  
 unstrengthened



**2534.000** Double slotted wall 300

Ext. dimensions: **255x22x345 mm**  
 Weight: 0.76 kg  
 No. per pallet: 432 pcs

No. per pack: 27 pcs  
 without base stop  
 unstrengthened



**2518.022** Slotted wall 300

Ext. dimensions: **255x22x180 mm**  
 Weight: 0.41 kg  
 No. per pallet: 1024 pcs

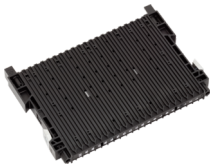
No. per pack: 32 pcs  
 with base stop type 022  
 unstrengthened



**2534.022** Double slotted wall 300

Ext. dimensions: **255x22x345 mm**  
 Weight: 0.79 kg  
 No. per pallet: 432 pcs

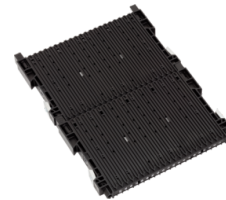
No. per pack: 27 pcs  
 with base stop type 022  
 unstrengthened



**2518.900** Slotted wall 300

Ext. dimensions: **255x22x180 mm**  
 Weight: 0.40 kg  
 No. per pallet: 1024 pcs

No. per pack: 32 pcs  
 without base stop  
 strengthened



**2534.900** Double slotted wall 300

Ext. dimensions: **255x22x345 mm**  
 Weight: 0.87 kg  
 No. per pallet: 432 pcs

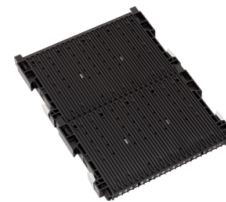
No. per pack: 27 pcs  
 without base stop  
 double strengthened



**2518.922** Slotted wall 300

Ext. dimensions: **255x22x180 mm**  
 Weight: 0.46 kg  
 No. per pallet: 1024 pcs

No. per pack: 32 pcs  
 with base stop type 022  
 strengthened



**2534.922** Double slotted wall 300

Ext. dimensions: **255x22x345 mm**  
 Weight: 0.93 kg  
 No. per pallet: 432 pcs

No. per pack: 27 pcs  
 with base stop type 022  
 double strengthened

**3518.000** Slotted wall 400

Ext. dimensions: **355x22/32x180 mm**  
 Weight: 0.48 kg  
 No. per pallet: 768 pcs

No. per pack: 24 pcs  
 without base stop  
 unstrengthened

**3518.922** Slotted wall 400

Ext. dimensions: **355x22/32x180 mm**  
 Weight: 0.61 kg  
 No. per pallet: 848 pcs

No. per pack: 53 pcs  
 with base stop type 022  
 strengthened

**3518.022** Slotted wall 400

Ext. dimensions: **355x22/32x180 mm**  
 Weight: 0.53 kg  
 No. per pallet: 848 pcs

No. per pack: 53 pcs  
 with base stop type 022  
 unstrengthened

**3518.932** Slotted wall 400

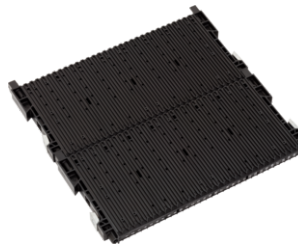
Ext. dimensions: **355x22/32x180 mm**  
 Weight: 0.62 kg  
 No. per pallet: 768 pcs

No. per pack: 48 pcs  
 with base stop type 032  
 strengthened

**3518.032** Slotted wall 400

Ext. dimensions: **355x22/32x180 mm**  
 Weight: 0.54 kg  
 No. per pallet: 768 pcs

No. per pack: 48 pcs  
 with base stop type 032  
 unstrengthened

**3535.000** Double slotted wall 400

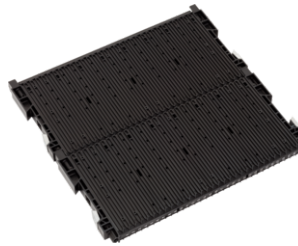
Ext. dimensions: **355x22/32x345 mm**  
 Weight: 0.98 kg  
 No. per pallet: 432 pcs

No. per pack: 27 pcs  
 without base stop  
 unstrengthened

**3518.900** Slotted wall 400

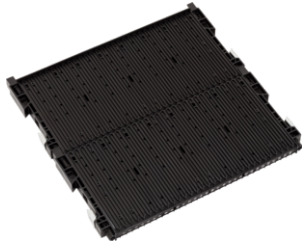
Ext. dimensions: **355x22/32x180 mm**  
 Weight: 0.60 kg  
 No. per pallet: 848 pcs

No. per pack: 53 pcs  
 without base stop  
 strengthened

**3535.022** Double slotted wall 400

Ext. dimensions: **355x22/32x345 mm**  
 Weight: 1.02 kg  
 No. per pallet: 432 pcs

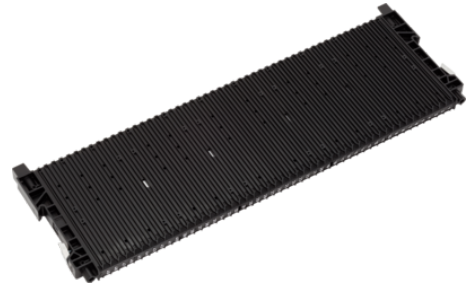
No. per pack: 27 pcs  
 with base stop type 022  
 unstrengthened



**3535.032** Double slotted wall 400

Ext. dimensions: **355x22/32x345 mm**  
 Weight: 1.02 kg  
 No. per pallet: 400 pcs

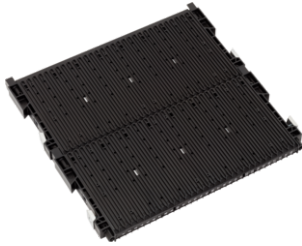
No. per pack: 25 pcs  
 with base stop type 032  
 unstrengthened



**5518.000** Slotted wall 600

Ext. dimensions: **555x22/25x180 mm**  
 Weight: 0.77 kg  
 No. per pallet: 512 pcs

No. per pack: 16 pcs  
 without base stop  
 strengthened



**3535.900** Double slotted wall 400

Ext. dimensions: **355x22/32x345 mm**  
 Weight: 1.21 kg  
 No. per pallet: 416 pcs

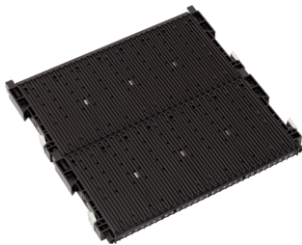
No. per pack: 26 pcs  
 without base stop  
 double strengthened



**5518.025** Slotted wall 600

Ext. dimensions: **555x22/25x180 mm**  
 Weight: 0.82 kg  
 No. per pallet: 544 pcs

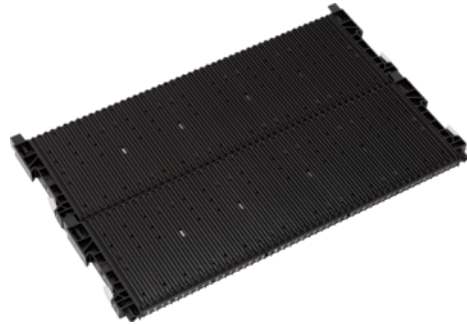
No. per pack: 16 pcs  
 with base stop type 025  
 strengthened



**3535.922** Double slotted wall 400

Ext. dimensions: **355x22/32x345 mm**  
 Weight: 1.22 kg  
 No. per pallet: 432 pcs

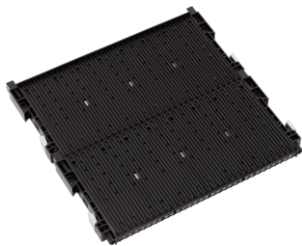
No. per pack: 27 pcs  
 with base stop type 022  
 double strengthened



**5535.000** Double slotted wall 600

Ext. dimensions: **555x22/25x345 mm**  
 Weight: 1.51 kg  
 No. per pallet: 288 pcs

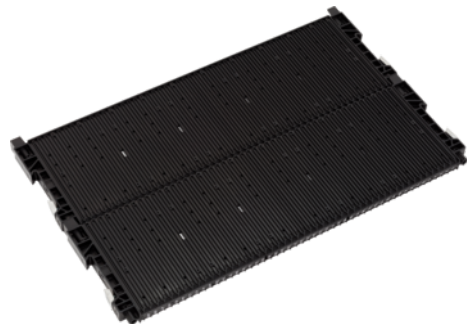
No. per pack: 18 pcs  
 without base stop  
 strengthened



**3535.932** Double slotted wall 400

Ext. dimensions: **355x22/32x345 mm**  
 Weight: 1.22 kg  
 No. per pallet: 400 pcs

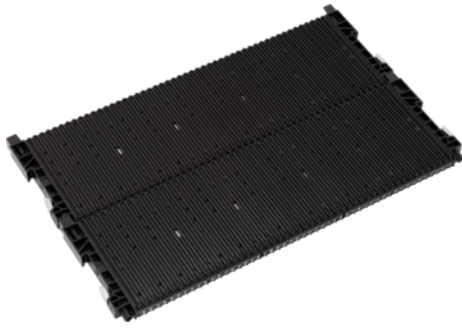
No. per pack: 25 pcs  
 with base stop type 032  
 double strengthened



**5535.025** Double slotted wall 600

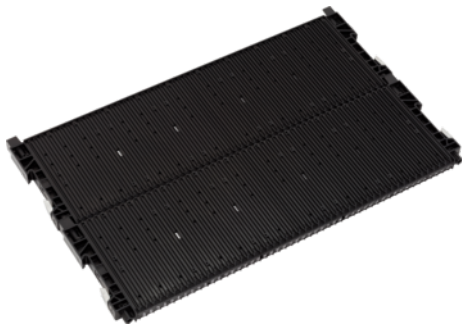
Ext. dimensions: **555x22/25x345 mm**  
 Weight: 1.58 kg  
 No. per pallet: 272 pcs

No. per pack: 17 pcs  
 with base stop type 025  
 strengthened



**5535.900** Double slotted wall 600  
 Ext. dimensions: **555x22/25x345 mm**  
 Weight: 1.62 kg  
 No. per pallet: 288 pcs

No. per pack: 18 pcs  
 without base stop  
 double strengthened



**5535.925** Double slotted wall 600  
 Ext. dimensions: **555x22/25x345 mm**  
 Weight: 1.66 kg  
 No. per pallet: 272 pcs

No. per pack: 17 pcs  
 with base stop type 025  
 double strengthened



**9980.074** Rack profile rail 256  
 Ext. dimensions: **256 mm**  
 Weight: 122 g  
 for container 400x300 mm

insertion lengthwise  
 for slotted wall 400



**9980.074** Rack profile rail 356  
 Ext. dimensions: **356 mm**  
 Weight: 168 g  
 for container 400x300/600x400 mm

insertion length/crosswise  
 for slotted wall 300/600



**9980.074** Rack profile rail 556  
 Ext. dimensions: **556 mm**  
 Weight: 263 g  
 for container 600x400 mm

insertion lengthwise  
 for slotted wall 600



**9980.074** Rack profile rail  
 Ext. dimensions: **x-x mm**  
 cut to desired length

**Option: 9980.075**  
 9980.075 = length 3450 mm  
 for any length



**9980.077** Hand grip for slotted wall  
 attachable grip strap un-assembled

**Option: 9980.977**  
 9980.977 = assembled



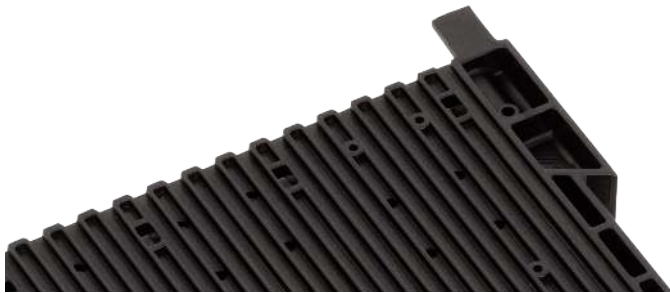
**9980.076** Slot clip  
 packed 100 pcs in a bag

suitable for Rack-Serie 180



**Slot Wall variants**

The different slot walls differ from each other with differing base stops and strengthening:



Without base stop (000/900)



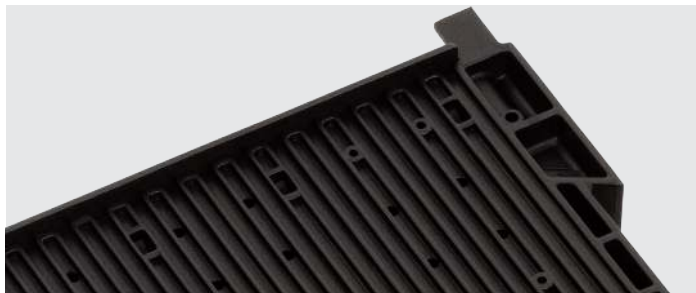
With base stop (022/922)



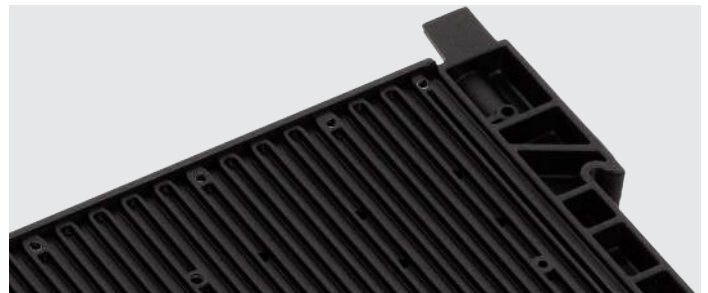
Non-strengthened (long side)



Non-strengthened (short side)



With base stop (032/932)



With base stop (025/925)

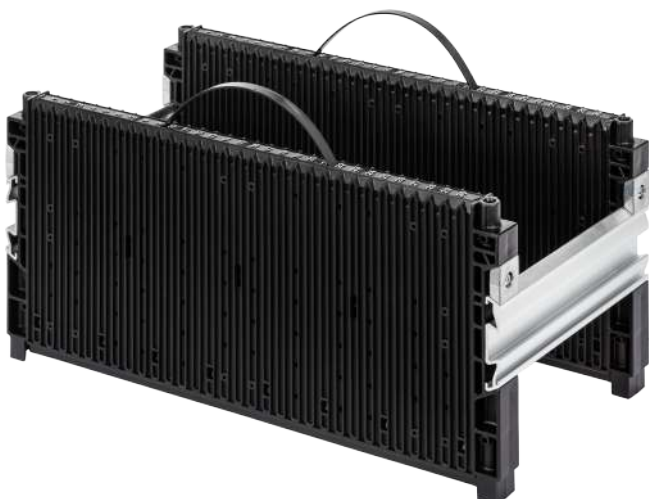


Strengthened (long side)



Strengthened (short side)

**Rack-System 180 mounted (with brace)**





# BLACKLINE

The conductive SGL-standard stackable container of the Blackline range conforms to the requirements of the Swiss Logistics Association (Schweizerische Gesellschaft für Logistik, SGL). It is extremely well-suited for the consignment, storage and protection of electronic components during manual and mechanical handling. There are about 20 different sizes and a multitude of variants and the Blackline range is designed for industrial use. The thick-walled and extremely robust and dimensionally stable design will protect your parts for years.




## Available sizes

Basic dimensions (LxW in mm)	External height (mm)								
	100	145	53	101	145	212	278	320	
200x150	100	145							
300x200			53	101	145				
400x300			53	101	145	212	278	320	
600x400			56	101	145	212	278	320	412

(depending on the base design, external height +3/+6 mm)

## Special types

All non-stock items are marked thus  and available on request.



### ESD version

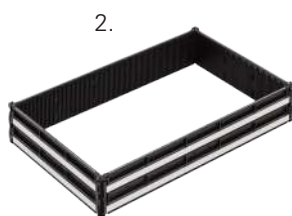
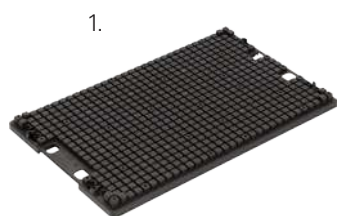
Every Blackline container carries the ESD logo and has a surface resistance of  $<10^5$  Ohm.



### Tip

The Blackline range offers comprehensive systems for the appropriate handling of printed circuit boards. Find out more in the following sections:

1. PCB Holders
2. Printorama
3. Rack-System 100
4. Rack-System 180



### Base types



Closed flat base 007

### Side wall types



Closed wall

### Grip types



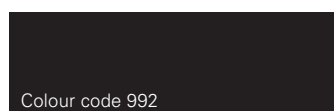
Shell grip



Handle strip

(some versions have other base types)

### Standard colour



Black ESD

## Blackline accessories

The Blackline range includes not only plastic containers but also the appropriate lids and cases. Dividers, labelling and marking, insert boxes and rollboys for easier transport complement the range.

### Dividers



### Lids



### Foam



### Insert boxes



See section:  
Containers for Small Parts

### Labelling



See section:  
Labelling

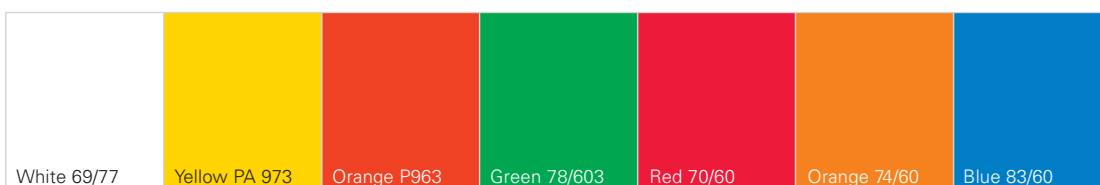
### Rollboys



See section:  
Store Organisation

## Marking (Printing)

On request, hot embossing in the following colours can also be used to customise the design of the containers of the Blackline range:





# BLACKLINE

## SGL-standard container conductive BL


The conductive SGL-standard container from the Blackline range is appreciated by professionals because of its robustness and dimensional stability. It is precisely this stable design and the almost indestructible material that makes the Blackline container an extremely durable and sustainable all-rounder in ESD-protected applications.



### Applications

Blackline stackable containers are extremely well-suited for the consignment, storage and protection of electronic components.

### Special types

All non-stock items are marked thus  and available on request.







**2108.007** Container BL

Ext. dimensions:	<b>200x150x100 mm</b>
Int. dimensions:	155x106x96 mm
Useable height:	85 mm
Load capacity:	15 kg
Volume:	1.6 l

Weight:	0.26 kg
<b>Closed flat base 007</b>	
Closed walls	
Handle strips	
No. per pallet:	480 pcs



**3213.007** Container BL

Ext. dimensions:	<b>300x200x145 mm</b>
Int. dimensions:	254x154x141 mm
Useable height:	128 mm
Load capacity:	15 kg
Volume:	5.5 l

Weight:	0.69 kg
<b>Closed flat base 007</b>	
Closed walls	
Shell grips	
No. per pallet:	240 pcs



**2113.007** Container BL

Ext. dimensions:	<b>200x150x145 mm</b>
Int. dimensions:	155x106x142 mm
Useable height:	129 mm
Load capacity:	15 kg
Volume:	2.3 l

Weight:	0.33 kg
<b>Closed flat base 007</b>	
Closed walls	
Handle strips	
No. per pallet:	328 pcs



**4304.007** Container BL

Ext. dimensions:	<b>400x300x53 mm</b>
Int. dimensions:	354x254x49 mm
Useable height:	41 mm
Load capacity:	15 kg
Volume:	4.4 l

Weight:	0.60 kg
<b>Closed flat base 007</b>	
Closed walls	
Handle strips	
No. per pallet:	352 pcs



**3204.007** Container BL

Ext. dimensions:	<b>300x200x56 mm</b>
Int. dimensions:	253x153x53 mm
Useable height:	41 mm
Load capacity:	15 kg
Volume:	2.1 l

Weight:	0.29 kg
<b>Closed flat base 007</b>	
Closed walls	
Handle strips	
No. per pallet:	448 pcs



**4308.907** Container BL

Ext. dimensions:	<b>400x300x101 mm</b>
Int. dimensions:	354x254x96 mm
Useable height:	83 mm
Load capacity:	15 kg
Volume:	8.6 l

Weight:	0.92 kg
<b>Closed flat base 007</b>	
Closed walls	
Handle strips	
No. per pallet:	176 pcs



**3208.007** Container BL

Ext. dimensions:	<b>300x200x101 mm</b>
Int. dimensions:	254x154x96 mm
Useable height:	83 mm
Load capacity:	15 kg
Volume:	3.8 l

Weight:	0.53 kg
<b>Closed flat base 007</b>	
Closed walls	
Shell grips	
No. per pallet:	352 pcs



**4313.907** Container BL

Ext. dimensions:	<b>400x300x145 mm</b>
Int. dimensions:	354x254x141 mm
Useable height:	128 mm
Load capacity:	15 kg
Volume:	12.7 l

Weight:	1.11 kg
<b>Closed flat base 007</b>	
Closed walls	
Shell grips	
No. per pallet:	120 pcs



**4313.007** Container BL light

Ext. dimensions: **400x300x145 mm**  
 Int. dimensions: 354x254x139 mm  
 Useable height: 128 mm  
 Load capacity: 10 kg  
 Volume: 12.5 l

Weight: 0.80 kg

**Closed flat base light**

Closed walls  
 Shell grips  
 No. per pallet: 120 pcs



**6404.007** Container BL

Ext. dimensions: **600x400x56 mm**  
 Int. dimensions: 560x360x54 mm  
 Useable height: 42 mm  
 Load capacity: 15 kg  
 Volume: 10.9 l

Weight: 1.21 kg

**Closed flat base 007**

Closed walls  
 Handle strips  
 No. per pallet: 176 pcs



**4320.007** Container BL

Ext. dimensions: **400x300x212 mm**  
 Int. dimensions: 354x254x208 mm  
 Useable height: 196 mm  
 Load capacity: 15 kg  
 Volume: 18.7 l

Weight: 1.54 kg

**Closed flat base 007**

Closed walls  
 Shell grips  
 No. per pallet: 80 pcs



**6408.007** Container BL

Ext. dimensions: **600x400x101 mm**  
 Int. dimensions: 560x360x95 mm  
 Useable height: 83 mm  
 Load capacity: 15 kg  
 Volume: 19.2 l

Weight: 1.62 kg

**Closed flat base 007**

Closed walls  
 Handle strips  
 No. per pallet: 88 pcs



**4326.007** Container BL

Ext. dimensions: **400x300x278 mm**  
 Int. dimensions: 360x260x275 mm  
 Useable height: 262 mm  
 Load capacity: 15 kg  
 Volume: 25.7 l

Weight: 2.05 kg

**Closed flat base 007**

Closed walls  
 Shell grips  
 No. per pallet: 56 pcs



**6413.007** Container BL

Ext. dimensions: **600x400x145 mm**  
 Int. dimensions: 554x354x141 mm  
 Useable height: 129 mm  
 Load capacity: 15 kg  
 Volume: 27.7 l

Weight: 2.04 kg

**Closed flat base 007**

Closed walls  
 Shell grips  
 No. per pallet: 60 pcs



**4332.007** Container BL

Ext. dimensions: **400x300x320 mm**  
 Int. dimensions: 360x260x316 mm  
 Useable height: 303 mm  
 Load capacity: 15 kg  
 Volume: 29.6 l

Weight: 2.17 kg

**Closed flat base 007**

Closed walls  
 Shell grips  
 No. per pallet: 48 pcs



**6413.007** Container BL light

Ext. dimensions: **600x400x145 mm**  
 Int. dimensions: 560x360x130 mm  
 Useable height: 129 mm  
 Load capacity: 10 kg  
 Volume: 26.2 l

Weight: 1.27 kg

**Closed flat base light**

Closed walls  
 Shell grips  
 No. per pallet: 60 pcs



**6413.625** Container BL

Ext. dimensions: **600x400x148 mm**  
 Int. dimensions: 560x360x130 mm  
 Useable height: 118 mm  
 Load capacity: 35 kg  
 Volume: 26.2 l

Weight: 2.61 kg  
**Perimeter ribbed base 624**  
 Closed walls  
 Shell grips  
 No. per pallet: 60 pcs



**6432.007** Container BL

Ext. dimensions: **600x400x320 mm**  
 Int. dimensions: 554x354x316 mm  
 Useable height: 303 mm  
 Load capacity: 15 kg  
 Volume: 62.0 l

Weight: 3.09 kg  
**Closed flat base 007**  
 Closed walls  
 Shell grips  
 No. per pallet: 24 pcs



**6420.007** Container BL

Ext. dimensions: **600x400x212 mm**  
 Int. dimensions: 554x354x208 mm  
 Useable height: 196 mm  
 Load capacity: 15 kg  
 Volume: 40.8 l

Weight: 2.53 kg  
**Closed flat base 007**  
 Closed walls  
 Shell grips  
 No. per pallet: 40 pcs



**6432.626** Container BL

Ext. dimensions: **600x400x323 mm**  
 Int. dimensions: 560x360x304 mm  
 Useable height: 291 mm  
 Load capacity: 50 kg  
 Volume: 61.3 l

Weight: 3.40 kg  
**Ribbed base 626**  
 Closed walls  
 Shell grips  
 No. per pallet: 24 pcs



**6420.626** Container BL

Ext. dimensions: **600x400x215 mm**  
 Int. dimensions: 560x360x197 mm  
 Useable height: 185 mm  
 Load capacity: 50 kg  
 Volume: 39.7 l

Weight: 3.57 kg  
**Ribbed base 626**  
 Closed walls  
 Shell grips  
 No. per pallet: 40 pcs



**6440.007** Container BL

Ext. dimensions: **600x400x412 mm**  
 Int. dimensions: 554x354x407 mm  
 Useable height: 393 mm  
 Load capacity: 15 kg  
 Volume: 79.8 l

Weight: 4.61 kg  
**Closed flat base 007**  
 Closed walls  
 Handle strips  
 No. per pallet: 20 pcs



**6426.007** Container BL

Ext. dimensions: **600x400x278 mm**  
 Int. dimensions: 554x354x273 mm  
 Useable height: 260 mm  
 Load capacity: 15 kg  
 Volume: 53.5 l

Weight: 3.04 kg  
**Closed flat base 007**  
 Closed walls  
 Shell grips  
 No. per pallet: 28 pcs

# BLACKLINE

## SGL-standard lid conductive BL

The conductive, dimensionally stable lid of the Blackline range is available in three designs: loose for placing on the container, with hinges and closures, and with four swing latches. It is adapted to the Euro-standard container, easy to handle and the wearing parts can be replaced at any time.



### Applications

The Blackline lid combined with a Blackline container protects the contents of the container optimally against electrostatic discharge.

### Available sizes

**Basic dimensions** (LxW in mm)

300x200

400x300


600x400

Suitable for Blackline stackable containers

### Hinge for lid



### Special types

All non-stock items are marked thus  and available on request.





**3200.000** Loose lid BL

Ext. dimensions: **300x200 mm**

Weight: 205 g

No. per pack: 45 pcs  
for loosely laying on



**4300.000** Loose lid BL

Ext. dimensions: **400x300 mm**

Weight: 378 g

No. per pack: 50 pcs  
for loosely laying on



**3200.032** Hinged lid BL

Ext. dimensions: **300x200 mm**

Weight: 217 g

No. per pack: 30 pcs  
2 hinges / 2 latches



**4300.032** Hinged lid BL

Ext. dimensions: **400x300 mm**

Weight: 387 g

No. per pack: 30 pcs  
2 hinges / 2 latches



**3200.044** Locking lid BL

Ext. dimensions: **300x200 mm**

Weight: 217 g

No. per pack: 30 pcs  
4 latches



**4300.044** Locking lid BL

Ext. dimensions: **400x300 mm**

Weight: 387 g

No. per pack: 30 pcs  
4 latches



**4300.932** Hinged lid BL

Ext. dimensions: **400x300 mm**

Weight: 416 g

No. per pack: 30 pcs  
2 hinges / 2 latches  
inner document compartment A4





**6400.000** Loose lid BL

Ext. dimensions: **600x400 mm**

Weight: 837 g

No. per pack: 40 pcs  
for loosely laying on



**9980.011** Hinge for lid BL

Weight: 4 g

Material: PA/PP

un-assembled, loose

accessories for SGL-norm case & lid  
lower part: PA, upper part: PP



**6400.032** Hinged lid BL

Ext. dimensions: **600x400 mm**

Weight: 847 g

No. per pack: 30 pcs  
2 hinges / 2 latches



**9980.012** Swing latch for lid BL

Weight: 7 g

Material: PA

un-assembled, loose, pairs left/right  
accessories for SGL-norm case & lid



**6400.044** Locking lid BL

Ext. dimensions: **600x400 mm**

Weight: 851 g

No. per pack: 30 pcs  
4 latches

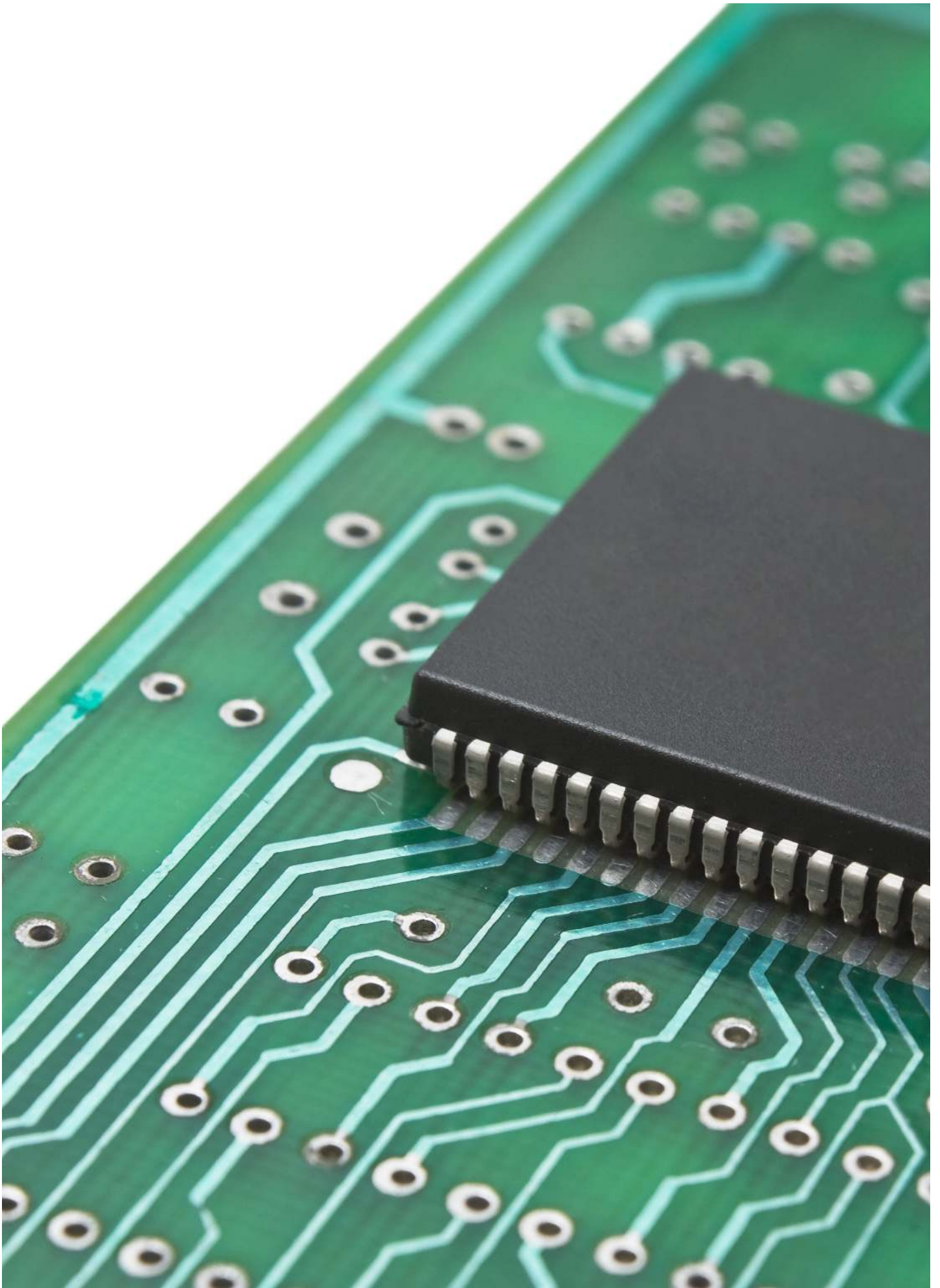


**6400.932** Hinged lid BL

Ext. dimensions: **600x400 mm**

Weight: 871 g

No. per pack: 30 pcs  
2 hinges / 2 latches  
inner document compartment A4



# BLACKLINE

## SGL-standard case conductive BL

The SGL-standard case of the Blackline range consists of a stackable container, Blackline hinged lid and a carrying handle that makes it practical and comfortable to carry the case.



### Applications

The Blackline case makes it easier to transport the container manually. If accessories such as dividers, foam or insert boxes are added, it is an ideal tool case; however, it is also very well suited for other applications.

### Available sizes


#### Basic dimensions (LxW in mm)

300x200

400x300

600x400

### Special types

All non-stock items are marked thus  and available on request.





**3204.390** Case BL

Ext. dimensions: **300x200x69 mm**  
 Int. dimensions: 260x160x39 mm  
 Useable height: 39 mm  
 Load capacity: 15 kg  
 Volume: 1.6 l

Weight: 0.53 kg

**Closed SGL base 000**

Handle strips  
 1 carrying grip on the long side  
 No. per pallet: 400 pcs



**4308.397** Case BL

Ext. dimensions: **400x300x110 mm**  
 Int. dimensions: 354x254x95 mm  
 Useable height: 95 mm  
 Load capacity: 15 kg  
 Volume: 8.5 l

Weight: 1.31 kg

**Closed flat base 007**

Handle strips  
 1 carrying grip on the long side  
 No. per pallet: 120 pcs



**3208.397** Case BL

Ext. dimensions: **300x200x110 mm**  
 Int. dimensions: 260x160x95 mm  
 Useable height: 95 mm  
 Load capacity: 15 kg  
 Volume: 4.0 l

Weight: 0.77 kg

**Closed flat base 007**

Shell grips  
 1 carrying grip on the long side  
 No. per pallet: 240 pcs



**4313.397** Case BL

Ext. dimensions: **400x300x154 mm**  
 Int. dimensions: 354x254x139 mm  
 Useable height: 139 mm  
 Load capacity: 15 kg  
 Volume: 12.5 l

Weight: 1.55 kg

**Closed flat base 007**

Shell grips  
 1 carrying grip on the long side  
 No. per pallet: 80 pcs



**3213.397** Case BL

Ext. dimensions: **300x200x154 mm**  
 Int. dimensions: 254x154x139 mm  
 Useable height: 139 mm  
 Load capacity: 15 kg  
 Volume: 5.4 l

Weight: 0.92 kg

**Closed flat base 007**

Shell grips  
 1 carrying grip on the long side  
 No. per pallet: 176 pcs



**4320.397** Case BL

Ext. dimensions: **400x300x221 mm**  
 Int. dimensions: 354x254x206 mm  
 Useable height: 206 mm  
 Load capacity: 15 kg  
 Volume: 18.5 l

Weight: 1.96 kg

**Closed flat base 007**

Shell grips  
 1 carrying grip on the long side  
 No. per pallet: 56 pcs



**4304.397** Case BL

Ext. dimensions: **400x300x63 mm**  
 Int. dimensions: 354x254x48 mm  
 Useable height: 48 mm  
 Load capacity: 15 kg  
 Volume: 5.2 l

Weight: 0.64 kg

**Closed flat base 007**

Handle strips  
 1 carrying grip on the long side  
 No. per pallet: 208 pcs



**4326.397** Case BL

Ext. dimensions: **400x300x287 mm**  
 Int. dimensions: 354x254x272 mm  
 Useable height: 272 mm  
 Load capacity: 15 kg  
 Volume: 24.5 l

Weight: 2.45 kg

**Closed flat base 007**

Shell grips  
 1 carrying grip on the long side  
 No. per pallet: 40 pcs





**6408.397** Case BL

Ext. dimensions: **600x400x111 mm**  
 Int. dimensions: 554x354x95 mm  
 Useable height: 95 mm  
 Load capacity: 15 kg  
 Volume: 18.6 l

Weight: 2.51 kg

**Closed flat base 007**

Handle strips  
 1 carrying grip on the long side  
 No. per pallet: 60 pcs



**6413.397** Case BL

Ext. dimensions: **600x400x155 mm**  
 Int. dimensions: 554x354x139 mm  
 Useable height: 139 mm  
 Load capacity: 15 kg  
 Volume: 27.3 l

Weight: 2.83 kg

**Closed flat base 007**

Shell grips  
 1 carrying grip on the long side  
 No. per pallet: 40 pcs



**6420.397** Case BL

Ext. dimensions: **600x400x221 mm**  
 Int. dimensions: 554x354x206 mm  
 Useable height: 206 mm  
 Load capacity: 15 kg  
 Volume: 40.4 l

Weight: 3.49 kg

**Closed flat base 007**

Shell grips  
 1 carrying grip on the long side  
 No. per pallet: 28 pcs



**6426.397** Case BL

Ext. dimensions: **600x400x288 mm**  
 Int. dimensions: 554x354x272 mm  
 Useable height: 272 mm  
 Load capacity: 15 kg  
 Volume: 53.3 l

Weight: 3.92 kg

**Closed flat base 007**

Shell grips  
 1 carrying grip on the long side  
 No. per pallet: 20 pcs



**9980.128** Case grip set conductive BL

Weight: 17 g

Material: PA

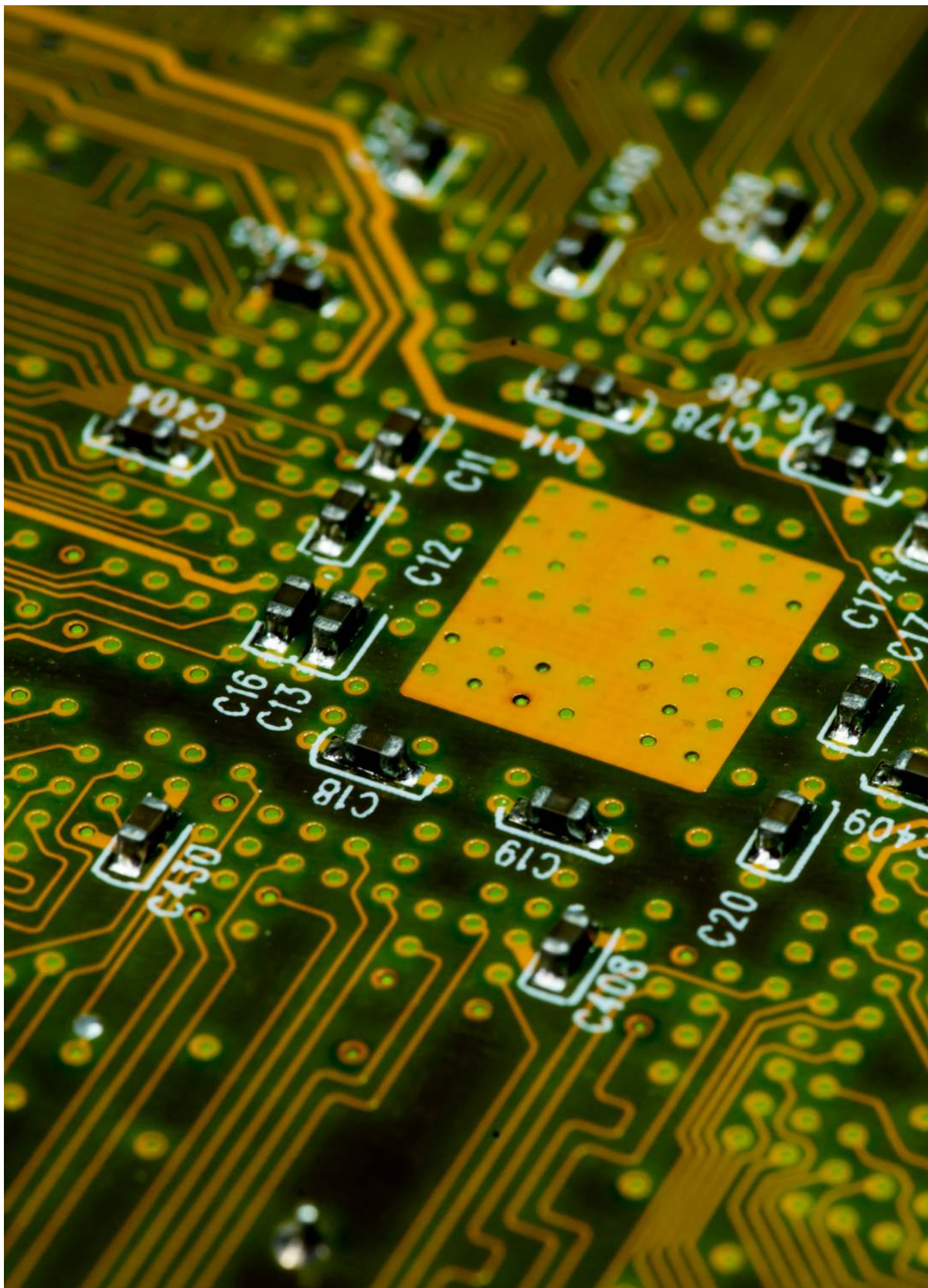
No. per pack: 100 pcs

unassembled

packed in a bag

Set compl. assembled = 9980.828





# BLACKLINE

## Dividers conductive BL

Blackline dividers allow Blackline containers to be subdivided flexibly. Thanks to the snap-in system, the dividers are held together firmly, even during cleaning or removal. The rounded edges and guide grooves make handling easy and comfortable.




### Applications

Blackline dividers allow containers to be partitioned flexibly to meet specific requirements for tidiness and protection.

Suitable for 400×300 mm and 600×400 mm Blackline stackable containers.

### Special types

All non-stock items are marked thus  and available on request.





**2610.003** Divider BL

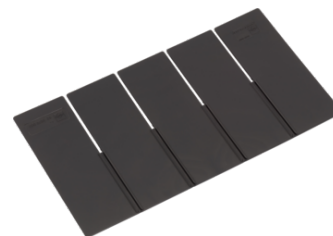
Ext. dimensions: **258x100x3 mm**

Weight: 70 g

No. per pack: 150 pcs

divider 23 mm

H=100 mm / L=300 mm



**3620.003** Divider BL

Ext. dimensions: **358x200x3 mm**

Weight: 197 g

No. per pack: 110 pcs

divider 64 mm

H=200 mm / L=400 mm



**3610.003** Divider BL

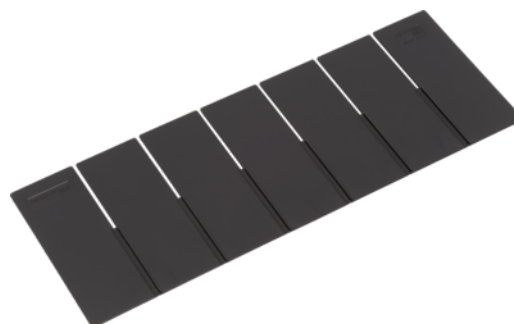
Ext. dimensions: **358x100x3 mm**

Weight: 97 g

No. per pack: 100 pcs

divider 29 mm

H=100 mm / L=400 mm



**5620.003** Divider BL

Ext. dimensions: **558x200x3 mm**

Weight: 351 g

No. per pack: 70 pcs

divider 73 mm

H=200 mm / L=600 mm



**5610.003** Divider BL

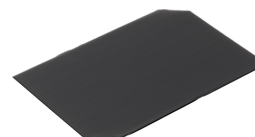
Ext. dimensions: **558x100x3 mm**

Weight: 156 g

No. per pack: 120 pcs

divider 33 mm

H=100 mm / L=600 mm



**9980.080** Intermediate layer BL

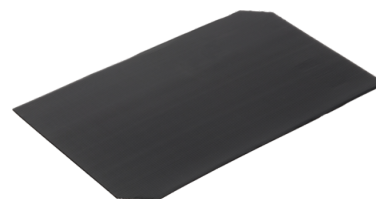
Ext. dimensions: **255x355x3 mm**

Weight: 47 g

No. per pack: 1 pcs

for container 400x300 mm

hollow chamber mat



**9980.081** Intermediate layer BL

Ext. dimensions: **355x555x3 mm**

Weight: 110 g

No. per pack: 1 pcs

for container 400x600 mm

hollow chamber mat



# BLACKLINE

## Foam cut-outs conductive BL

Blackline foam cut-outs in the lid, on the walls or on the base of the container prevent slipping or damage to the stored products. Different thicknesses and customised cut-puts (available on request) guarantee precise tailoring to your specific needs.



### Applications

Blackline foam cut-outs allow the Blackline container to be arranged individually to satisfy your specific needs exactly.

### Available sizes

#### Basic dimensions (L×W in mm)

400×300


600×400

Suitable for Blackline stackable containers.

### Tip

If you wish, the foam can also be custom cut for other product ranges such as Newbox Black.

### Special types

All non-stock items are marked thus  and available on request.





**2636.006** Flat Foam BL

Ext. dimensions: <b>358x258x6 mm</b>	for lid 400x300 mm
Weight: 34 g	height 6 mm
Material: PUR	loose (glued: 2636.007)



**2636.015** Flat Foam BL

Ext. dimensions: <b>358x258x15 mm</b>	for lid 400x300 mm
Weight: 28 g	height 15 mm
Material: PUR	loose (glued: 2636.016)



**3656.006** Flat Foam BL

Ext. dimensions: <b>558x358x6 mm</b>	for lid 600x400 mm
Weight: 25 g	height 6 mm
Material: PUR	loose (glued: 3656.007)



**3656.015** Flat Foam BL

Ext. dimensions: <b>558x358x15 mm</b>	for lid 600x400 mm
Weight: 50 g	height 15 mm
Material: PUR	loose (glued: 3656.016)



# **NEWBOX BLACK**

Newbox Black conductive Euro-Norm stackable containers are available in about 20 different sizes and are ideally suited to storage, transport and protection of your electronic components. The containers are stackable with dimensions that match those of the Euro pallets. Compared with the Blackline range, the Newbox Black range impresses with a somewhat slimmer and lighter design that is nevertheless robust and dimensionally stable.




## **Available sizes**

<b>Basic dimensions</b> (LxW in mm)	<b>External height</b> (mm)									
300x200	120	147	220							
400x300	120	170	220	270	320					
600x400	75	120	150	170	220	236	280	343	423	
800x600	320									

(depending on the base design, external height +/- 5 mm)

## **Special types**

All non-stock items are marked thus  and available on request.



**ESD version**

Every Newbox Black container carries the ESD logo and has a surface resistance of <math><10^5</math> ohm.



**Base types**



Closed flat base V1

**Side wall types**



Closed wall

**Grip types**

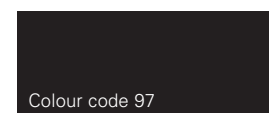


Shell grip



Handle strips

**Standard colours**



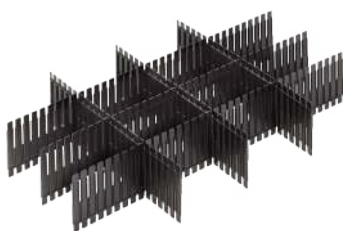
Black ESD

(some versions have other base types)

**Newbox Black accessories**

Appropriate lids, dividers, labelling & marking and transport trolleys round off the Newbox Black range.

**Dividers**



**Lid**



**Labelling**



See section: Labelling

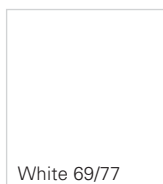
**Rollboy**



See section: Store Organisation

**Marking (Printing)**

On request, hot embossing in the following colours can also be used to customise the design of the containers of the Newbox Black range:



Other colours on request.

# **NEWBOX BLACK**

Euro-standard container conductive NB MC


The Euro-standard container of the Newbox range boasts a slim design. Thanks to its robustness and dimensional stability, the Newbox is a durable and economic product.



## **Applications**

Newbox Black stackable containers are extremely well-suited for the consignment, storage and protection of electronic components.

## **Special types**

All non-stock items are marked thus  and available on request.





**NB 05 MC** Container NB MC

Ext. dimensions: **300x200x120 mm**  
 Int. dimensions: 260x160x117 mm  
 Useable height: 103 mm  
 Load capacity: 12 kg  
 Volume: 4.9 l

Weight: 0.42 kg  
**Closed flat base V1**  
 Closed walls  
 Shell grips  
 No. per pallet: 304 pcs



**NB 14 MC** Container NB MC

Ext. dimensions: **400x300x170 mm**  
 Int. dimensions: 358x258x168 mm  
 Useable height: 154 mm  
 Load capacity: 12 kg  
 Volume: 15.5 l

Weight: 1.09 kg  
**Closed flat base V1**  
 Closed walls  
 Handle strips  
 No. per pallet: 104 pcs



**NB 06 MC** Container NB MC

Ext. dimensions: **300x200x147 mm**  
 Int. dimensions: 260x160x145 mm  
 Useable height: 131 mm  
 Load capacity: 12 kg  
 Volume: 6.0 l

Weight: 0.48 kg  
**Closed flat base V1**  
 Closed walls  
 Shell grips  
 No. per pallet: 240 pcs



**NB 20 MC** Container NB MC

Ext. dimensions: **400x300x220 mm**  
 Int. dimensions: 358x258x217 mm  
 Useable height: 201 mm  
 Load capacity: 12 kg  
 Volume: 19.9 l

Weight: 1.24 kg  
**Closed flat base V1**  
 Closed walls  
 Handle strips  
 No. per pallet: 72 pcs



**NB 09 MC** Container NB MC

Ext. dimensions: **300x200x220 mm**  
 Int. dimensions: 260x160x218 mm  
 Useable height: 204 mm  
 Load capacity: 12 kg  
 Volume: 9.1 l

Weight: 0.64 kg  
**Closed flat base V1**  
 Closed walls  
 Shell grips  
 No. per pallet: 144 pcs



**NB 25 MC** Container NB MC

Ext. dimensions: **400x300x270 mm**  
 Int. dimensions: 358x256x267 mm  
 Useable height: 251 mm  
 Load capacity: 12 kg  
 Volume: 24.3 l

Weight: 1.71 kg  
**Closed flat base V1**  
 Closed walls  
 Handle strips  
 No. per pallet: 56 pcs



**NB 10 MC** Container NB MC

Ext. dimensions: **400x300x120 mm**  
 Int. dimensions: 360x258x118 mm  
 Useable height: 104 mm  
 Load capacity: 12 kg  
 Volume: 11.0 l

Weight: 0.76 kg  
**Closed flat base V1**  
 Closed walls  
 Shell grips  
 No. per pallet: 152 pcs



**NB 31 MC** Container NB MC

Ext. dimensions: **400x300x320 mm**  
 Int. dimensions: 358x256x316 mm  
 Useable height: 302 mm  
 Load capacity: 12 kg  
 Volume: 29.0 l

Weight: 1.92 kg  
**Closed flat base V1**  
 Closed walls  
 Handle strips  
 No. per pallet: 48 pcs



**NB 15 MC** Container NB MC

Ext. dimensions: **600x400x75 mm**  
 Int. dimensions: 555x355x72 mm  
 Useable height: 56 mm  
 Load capacity: 12 kg  
 Volume: 14.2 l

Weight: 1.33 kg  
**Closed flat base V1**  
 Closed walls  
 Handle strips  
 No. per pallet: 132 pcs



**NB 42 MC** Container NB MC

Ext. dimensions: **600x400x220 mm**  
 Int. dimensions: 555x358x217 mm  
 Useable height: 198 mm  
 Load capacity: 12 kg  
 Volume: 43.1 l

Weight: 2.50 kg  
**Closed flat base V1**  
 Closed walls  
 Handle strips  
 No. per pallet: 40 pcs



**NB 24 MC** Container NB MC

Ext. dimensions: **600x400x120 mm**  
 Int. dimensions: 555x358x115 mm  
 Useable height: 96 mm  
 Load capacity: 12 kg  
 Volume: 22.8 l

Weight: 1.72 kg  
**Closed flat base V1**  
 Closed walls  
 Shell grips  
 No. per pallet: 80 pcs



**NB 50 MC** Container NB MC

Ext. dimensions: **600x400x236 mm**  
 Int. dimensions: 555x357x231 mm  
 Useable height: 212 mm  
 Load capacity: 12 kg  
 Volume: 45.8 l

Weight: 2.89 kg  
**Closed flat base V1**  
 Closed walls  
 Handle strips  
 No. per pallet: 36 pcs



**NB 33 MC** Container NB MC

Ext. dimensions: **600x400x150 mm**  
 Int. dimensions: 553x353x145 mm  
 Useable height: 129 mm  
 Load capacity: 12 kg  
 Volume: 28.3 l

Weight: 2.18 kg  
**Closed flat base V1**  
 Closed walls  
 Handle strips  
 No. per pallet: 60 pcs



**NB 55 MC** Container NB MC

Ext. dimensions: **600x400x280 mm**  
 Int. dimensions: 553x355x277 mm  
 Useable height: 261 mm  
 Load capacity: 12 kg  
 Volume: 54.4 l

Weight: 3.21 kg  
**Closed flat base V1**  
 Closed walls  
 Handle strips  
 No. per pallet: 28 pcs



**NB 34 MC** Container NB MC

Ext. dimensions: **600x400x170 mm**  
 Int. dimensions: 555x355x165 mm  
 Useable height: 149 mm  
 Load capacity: 12 kg  
 Volume: 32.5 l

Weight: 2.16 kg  
**Closed flat base V1**  
 Closed walls  
 Handle strips  
 No. per pallet: 52 pcs

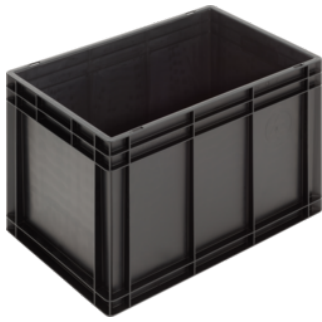


**NB 70 MC** Container NB MC

Ext. dimensions: **600x400x343 mm**  
 Int. dimensions: 557x358x340 mm  
 Useable height: 321 mm  
 Load capacity: 12 kg  
 Volume: 67.8 l

Weight: 2.91 kg  
**Closed flat base V1**  
 Closed walls  
 Handle strips  
 No. per pallet: 36 pcs

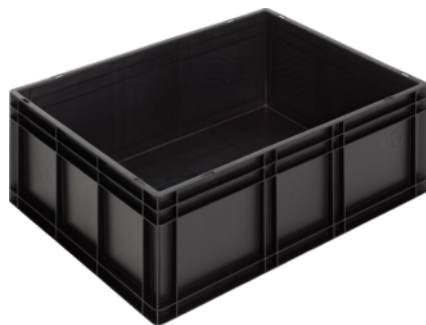




**NB 80 MC** Container NB MC

Ext. dimensions:	<b>600x400x423 mm</b>
Int. dimensions:	555x355x420 mm
Useable height:	401 mm
Load capacity:	12 kg
Volume:	82.8 l

Weight:	4.69 kg
<b>Closed flat base V1</b>	
Closed walls	
Handle strips	
No. per pallet:	20 pcs



**NB 130 MC** Container NB MC

Ext. dimensions:	<b>800x600x320 mm</b>
Int. dimensions:	756x556x297 mm
Useable height:	277 mm
Load capacity:	30 kg
Volume:	124.8 l

Weight:	6.28 kg
<b>Integrated system base V6</b>	
Closed walls	
Handle strips	
No. per pallet:	14 pcs

# **NEWBOX BLACK**

Euro-Norm lids conductive NB MC

The Newbox Black lid can be handled with one hand and is available in two versions: loose for placing on the container or with hinges and closures. It matches the Euro-Norm container, is easy to handle and the wearing parts can be replaced at any time.



## **Applications**

The Newbox Black lid combined with a Newbox Black container protects the container contents optimally against electrostatic discharge.

## **Available sizes**

Basic dimensions (L×W in mm)
300×200
400×300
600×400

Suitable for Newbox Black stackable containers

## **Hinge for lid**



NBC 32




NBC 43



NBC 64

## **Special types**

All non-stock items are marked thus  and available on request.





**NBC 32 MC SG** Loose lid NB MC

Ext. dimensions: **300x200 mm**

Weight: 170 g

No. per pack: 30 pcs  
for loosely laying on



**NBC 64 MC SG** Loose lid NB MC

Ext. dimensions: **600x400 mm**

Weight: 821 g

No. per pack: 10 pcs  
for loosely laying on



**NBC 32 MC** Hinged lid NB MC

Ext. dimensions: **300x200 mm**

Weight: 172 g

No. per pack: 30 pcs  
2 hinges



**NBC 64 MC** Hinged lid NB MC

Ext. dimensions: **600x400 mm**

Weight: 842 g

No. per pack: 10 pcs  
2 hinges



**NBC 43 MC SG** Loose lid NB MC

Ext. dimensions: **400x300 mm**

Weight: 324 g

No. per pack: 20 pcs  
for loosely laying on



**NBC S MC** Sliding closure for lid NB MC

Weight: 4 g

Material: PP

No. per pack: 100 pcs  
un-assembled  
accessories for euro-norm case & lid



**NBC 43 MC** Hinged lid NB MC

Ext. dimensions: **400x300 mm**

Weight: 279 g

No. per pack: 20 pcs  
2 hinges

# **NEWBOX BLACK**

## Dividers conductive NB MC

Newbox Black dividers allow containers to be partitioned flexibly and when used ensure orderliness and provide protection. Thanks to the snap system, the dividers are held together firmly, even during cleaning or removal. The rounded edges and guide grooves make handling easy and comfortable.




### **Applications**

Newbox Black dividers allow containers to be partitioned flexibly and when used ensure orderliness and provide protection in the container.

Suitable for 600×400 mm Newbox Black stackable containers.

### **Special types**

All non-stock items are marked thus  and available on request.





**Divit 400 MC** Divider NB MC

Ext. dimensions: **352x100 mm**

Weight: 63 g

No. per pack: 50 pcs

divider 15 mm

H=100 mm / L=400 mm



**Divit 600 MC** Divider NB MC

Ext. dimensions: **552x100 mm**

Weight: 100 g

No. per pack: 40 pcs

divider 15 mm

H=100 mm / L=600 mm



# **AUTOMATIC BLACK**

The dimensionally stable Automatic Black together with stackable containers (Blackline Futura) is ideal for automated or manual distribution in the ESD-protected non-food sector. However, the trays and tablets also perform well in semi and fully automated operation and protect your conductive electronic components. The design takes into account both the requirements of modern logistics and the opportunities that today's plastics technology has to offer.




## **Available sizes**

<b>Blackline Futura (closed)</b>	
<b>Basic dimensions</b> (LxW in mm)	<b>External height</b> (mm)
400x300	120 175
600x400	120 175/176

<b>Trays and tablets</b>	
<b>Basic dimensions</b> (LxW in mm)	<b>External height</b> (mm)
328x248	50 80
500x330	98 140
600x400	60
645x485	30

## **Special types**

All non-stock items are marked thus  and available on request.



### Base types



Flat base 007



Perimeter ribbed base 064  
(strengthened 13 mm, low-noise)

### Side wall types



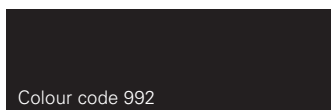
Closed wall

### Grip types



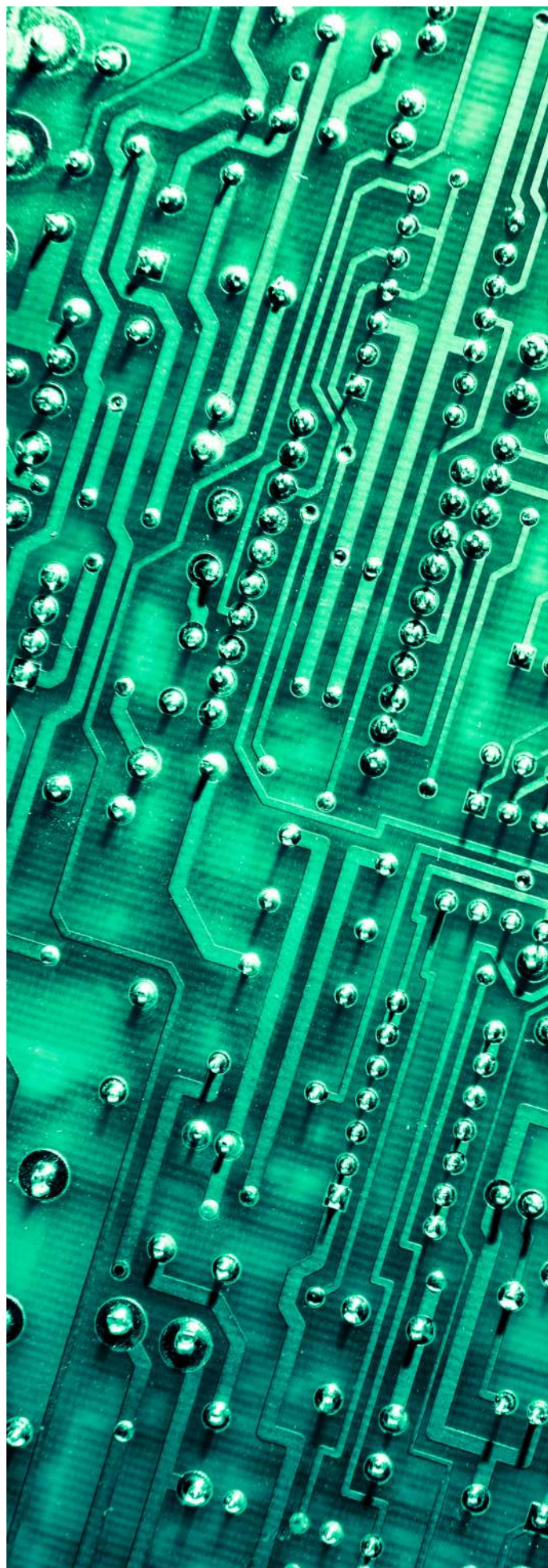
Shell grip

### Standard colour



Colour code 992

Black ESD



# **AUTOMATIC BLACK**

## Containers BL Futura AB MC

The Blackline Futura container is the ESD version of our Automatic Black range. Reinforcements, various handling options and a high degree of dimensional accuracy guarantee trouble-free operation.

These containers run particularly smoothly when being transported on roller conveyors, have optional access openings, and are suitable for both automated and manual handling.




### **Applications**

The Blackline Futura container is ideal for the distribution of ESD-protected non-food products.

### **Tip**

Equipped with the extremely smooth-running and heavy duty **perimeter ribbed base 064**, the Blackline Futura container is perfect for use in fully automated storage systems.

### **Special types**

All non-stock items are marked thus  and available on request.





**4312.060** Container BL Futura

Ext. dimensions:	<b>400x300x120 mm</b>
Int. dimensions:	362x262x115 mm
Useable height:	104 mm
Load capacity:	15 kg
Volume:	10.9 l

Weight:	1.03 kg
<b>Closed flat base 007</b>	
Closed walls	
Shell grips	
No. per pallet:	144 pcs



**6412.060** Container BL Futura

Ext. dimensions:	<b>600x400x120 mm</b>
Int. dimensions:	562x362x115 mm
Useable height:	104 mm
Load capacity:	15 kg
Volume:	23.4 l

Weight:	1.74 kg
<b>Closed flat base 007</b>	
Closed walls	
Shell grips	
No. per pallet:	72 pcs



**4317.060** Container BL Futura

Ext. dimensions:	<b>400x300x175 mm</b>
Int. dimensions:	362x262x170 mm
Useable height:	159 mm
Load capacity:	15 kg
Volume:	16.1 l

Weight:	1.28 kg
<b>Closed flat base 007</b>	
Closed walls	
Shell grips	
No. per pallet:	96 pcs



**6417.060** Container BL Futura

Ext. dimensions:	<b>600x400x175 mm</b>
Int. dimensions:	562x362x170 mm
Useable height:	159 mm
Load capacity:	15 kg
Volume:	34.6 l

Weight:	2.02 kg
<b>Closed flat base 007</b>	
Closed walls	
Shell grips	
No. per pallet:	48 pcs



**6417.064** Container BL Futura

Ext. dimensions:	<b>600x400x176 mm</b>
Int. dimensions:	560x360x160 mm
Useable height:	147 mm
Load capacity:	30 kg
Volume:	33.0 l

Weight:	2.36 kg
<b>Perimeter ribbed base 064</b>	
Closed walls	
Shell grips	
No. per pallet:	48 pcs





# **AUTOMATIC BLACK**

## Trays and tablets conductive AB MC


The conductive trays and tablets are real all-rounders in semi and fully automated handling systems. They enable the smallest manufacturing tolerances to be achieved in fully automated production cells. In addition, they are dimensionally stable, highly precise and extremely durable. They are available both as standard solutions as well as custom-made products.



### **Applications**

The trays and tablets are ideal for transporting conductive electronic components.

### **Special types**

All non-stock items are marked thus  and available on request.







**5033.098** Ribbed shelf H98

Ext. dimensions: **500x330x98 mm**  
 Int. dimensions: 470x300x81 mm  
 Useable height: 81 mm  
 Load capacity: 15 kg  
 Weight: 1.26 kg

**Closed flat base**  
 Closed walls  
 Shell grips  
 No. per pallet: 100 pcs  
 smooth inside



**6448.030** Logistic-Tray H30

Ext. dimensions: **645x485x30 mm**  
 Int. dimensions: 605x445 mm  
 Useable height: 30 mm  
 Load capacity: 5 kg  
 Weight: 1.30 kg

**Closed flat base**  
 Closed walls  
 Handle strips  
 No. per pallet: 150 pcs



**5033.140** Ribbed shelf H140

Ext. dimensions: **500x330x140 mm**  
 Int. dimensions: 470x300x123 mm  
 Useable height: 123 mm  
 Load capacity: 15 kg  
 Weight: 1.49 kg

**Closed flat base**  
 Closed walls  
 Shell grips  
 No. per pallet: 60 pcs  
 smooth inside



**5033.000** Lid

Ext. dimensions: **500x330 mm**  
 Weight: 0.54 kg  
 No. per pallet: 256 pcs

for shelf H98 & H140  
 accessories for 5033



**3325.050** Dividable shelf H50

Ext. dimensions: **328x248x50 mm**  
 Int. dimensions: 316x236x42 mm  
 Useable height: 42 mm  
 Load capacity: 15 kg  
 Weight: 0.31 kg

**Closed STR base**

Closed walls  
 No. per pallet: 360 pcs  
 divisible for 8 units



**3325.080** Dividable shelf H80

Ext. dimensions: **328x248x80 mm**  
 Int. dimensions: 316x236x72 mm  
 Useable height: 72 mm  
 Load capacity: 15 kg  
 Weight: 0.40 kg

**Closed STR base**

Closed walls  
 No. per pallet: 225 pcs  
 divisible for 8 units



**3325.000** Lid

Ext. dimensions: **328x248 mm**  
 Weight: 167 g  
 No. per pack: 60 pcs

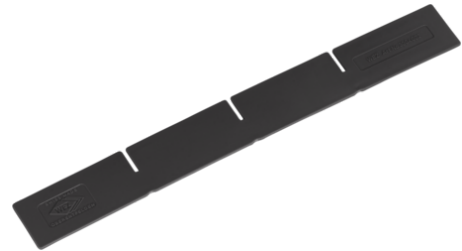
for shelf H50 & H80  
 accessories for 3325



**2004.002** Short divider

Ext. dimensions: **242x39 mm**  
 Weight: 23 g  
 No. per pack: 750 pcs

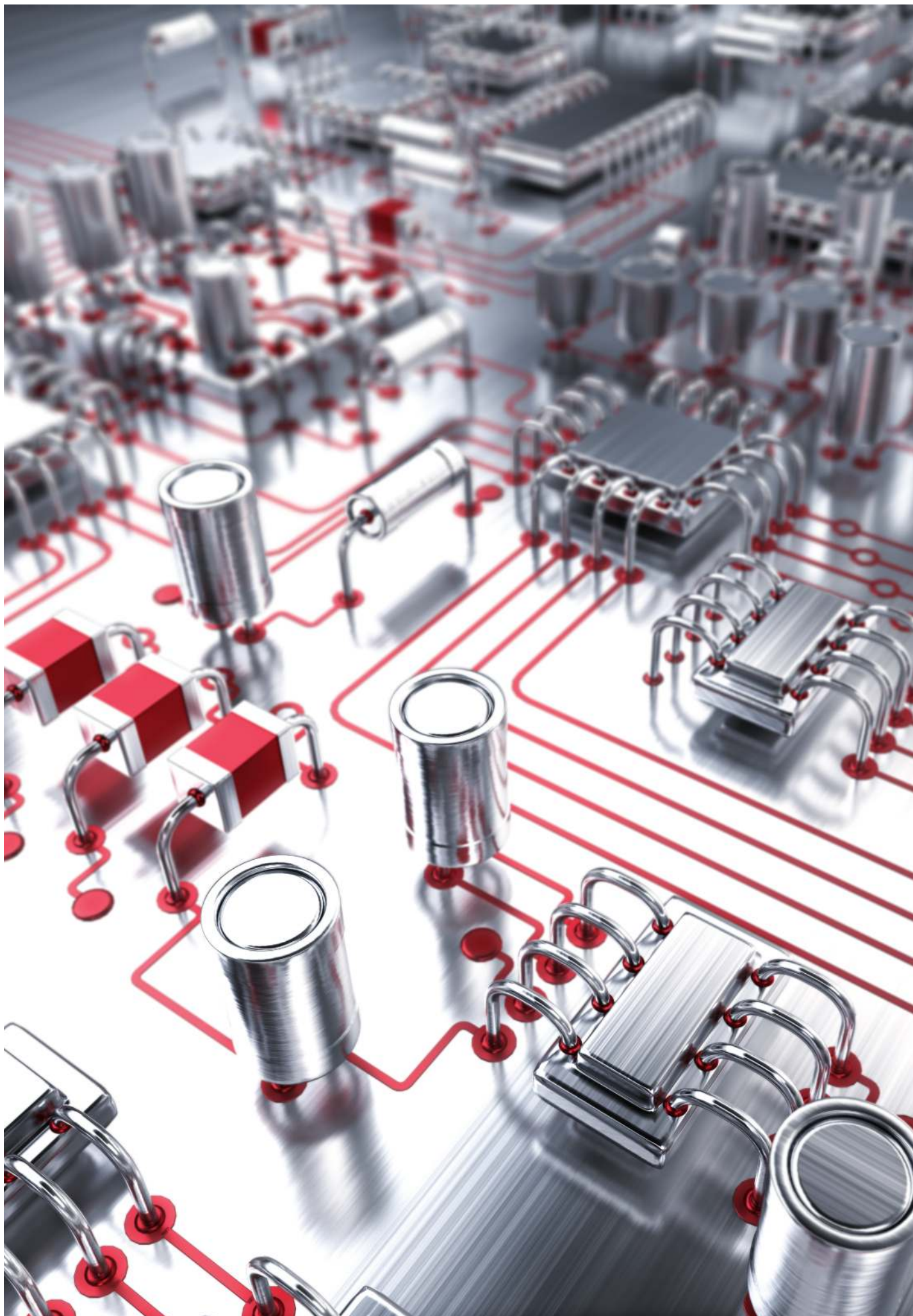
for shelf H50 & H80  
 accessories for 3325



**3004.002** Long divider

Ext. dimensions: **322x39 mm**  
 Weight: 28 g  
 No. per pack: 525 pcs

for shelf H50 & H80  
 accessories for 3325




# OPEN-FRONTED STORAGE BOXES ESD

## CLASSICBOX BLACK

The open-fronted storage boxes of the Classicbox Black range are available in six different sizes and this is ideal for the storage and protection of your electronic components. The Classicbox Black boxes offer lots of space for components, are stackable and the ESD versions are designed to be extremely dimensionally stable.



### Special types

All non-stock items are marked thus  and available on request.



## Classicbox Black

### Available sizes (LxWxH in mm)

095x100x050      350x200x145

175x100x075      350x200x200

235x145x125      500x300x200

**Material:** PP (ESD)

### Standard colour



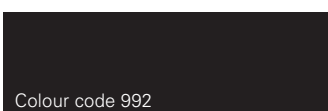
## Classicbox Black accessories

CB MC labels



Carrying bar, permanently fitted for more stability.

## Standard colour



Black ESD



# CLASSICBOX BLACK

Open-fronted storage boxes conductive CB MC

Classicbox Black boxes offer an outstanding view of the contents stored. The large and easy to use recessed grips at the front and rear facilitate manual transport. In addition, the smooth underside of the container also ensures quiet movement on the conveyor during automated handling.



## Applications

Open-fronted Classicbox Black boxes organise and protect your electronic components and are also perfectly suitable for use with the Kanban method.


## Accessories

Practical labels round off the Classicbox Black range.

## Tip

We recommend that you also take a look at the section rack systems for open-fronted storage boxes, which leaves almost nothing to be desired where optimal space utilisation is concerned.

## Special types

All non-stock items are marked thus  and available on request.





**CB 6 D MC** Storage box CB MC  
 Ext. dimensions: **95x100x50 mm**  
 Int. dimensions: 60x87x44 mm  
 Volume: 0.2 l  
 Material: PP  
 No. per pack: 50 pcs



**CB 3 Z MC** Storage box CB MC  
 Ext. dimensions: **350x200x145 mm**  
 Int. dimensions: 280x182x127 mm  
 Volume: 6.5 l  
 Material: PP  
 No. per pack: 12 pcs



**CB ET 6/6 D** Label for CB / CB MC  
 Ext. dimensions: **78x13 mm**  
 Material: Paper  
 No. per pack: 100 pcs



**CB ET 3 Z** Label for CB / CB MC  
 Ext. dimensions: **79x30 mm**  
 Material: Paper  
 No. per pack: 100 pcs



**CB 6 MC** Storage box CB MC  
 Ext. dimensions: **95x100x50 mm**  
 Int. dimensions: 60x87x44 mm  
 Volume: 0.2 l  
 Material: PP  
 No. per pack: 50 pcs



**CB 3 MC** Storage box CB MC  
 Ext. dimensions: **350x200x200 mm**  
 Int. dimensions: 280x182x185 mm  
 Volume: 9.4 l  
 Material: PP  
 No. per pack: 8 pcs



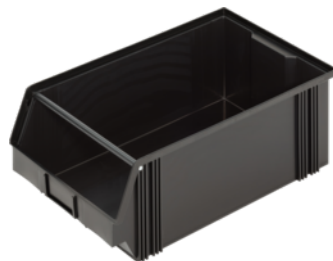
**CB ET 5** Label for CB / CB MC  
 Ext. dimensions: **79x20 mm**  
 Material: Paper  
 No. per pack: 100 pcs



**CB ET 3** Label for CB / CB MC  
 Ext. dimensions: **78x42 mm**  
 Material: Paper  
 No. per pack: 100 pcs



**CB 5 MC** Storage box CB MC  
 Ext. dimensions: **175x100x75 mm**  
 Int. dimensions: 129x87x68 mm  
 Volume: 0.8 l  
 Material: PP  
 No. per pack: 40 pcs



**CB 2 MC** Storage box CB MC  
 Ext. dimensions: **500x300x200 mm**  
 Int. dimensions: 425x280x183 mm  
 Volume: 21.8 l  
 Material: PP  
 No. per pack: 6 pcs



**CB ET 4** Label for CB / CB MC  
 Ext. dimensions: **80x29 mm**  
 Material: Paper  
 No. per pack: 100 pcs



**CB ET 2** Label for CB / CB MC  
 Ext. dimensions: **81x42 mm**  
 Material: Paper  
 No. per pack: 100 pcs

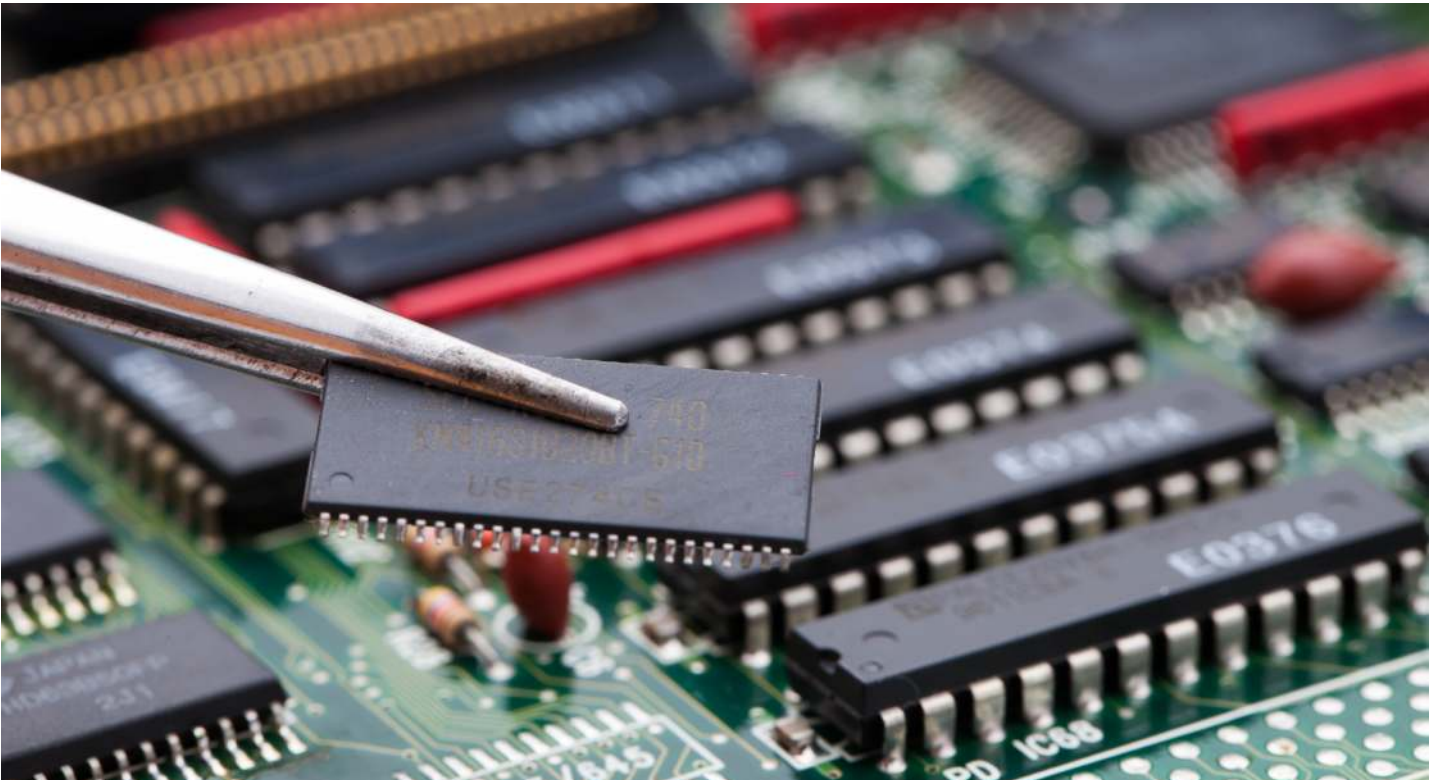


**CB 4 MC** Storage box CB MC  
 Ext. dimensions: **235x145x125 mm**  
 Int. dimensions: 180x127x110 mm  
 Volume: 2.5 l  
 Material: PP  
 No. per pack: 27 pcs

# BINS FOR SMALL PARTS ESD

## VARIOBOX BLACK      FLIPTOPBOX BLACK


The range of ESD bins for small parts consists of insert boxes (Variobox Black) and hinged boxes (Fliptopbox Black) and protects your electronic components against electrostatic discharge.



The Variobox Black containers can be preconfigured in the stackable container or also ordered loosely for the specific application. They are ideally suited for storing electronic components in stackable containers, but are also suitable singly and individually coordinated in your drawer or cabinet systems.

The Fliptopbox Black bins also provide protection for electronic parts and additionally are outstandingly suited as presentation boxes or promotional gifts.

### Special types

All non-stock items are marked thus  and available on request.



## Variobox Black

**Available sizes** (LxWxH in mm)

064x089x055	137x087x110
128x089x055	174x137x110
128x178x055	274x087x110
179x112x055	274x174x110
160x087x070	550x087x110
260x120x070	350x274x110
250x175x095	550x174x110

**Material**

PP oder PS (ESD)



## Fliptopbox Black

**Available sizes** (LxWxH in mm)

136x087x019
136x087x035
136x087x055
180x140x080
225x125x060

**Material**

PP (ESD)



## Fliptopbox Black

**Available sizes** (LxWxH in mm)

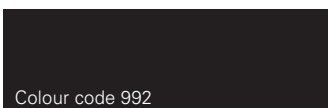
118x78x20
190x112x20

**Material**

PP (ESD)



## Standard colour



Black ESD

Colour code 992

# VARIOBOX BLACK

## Insert boxes conductive VB MC

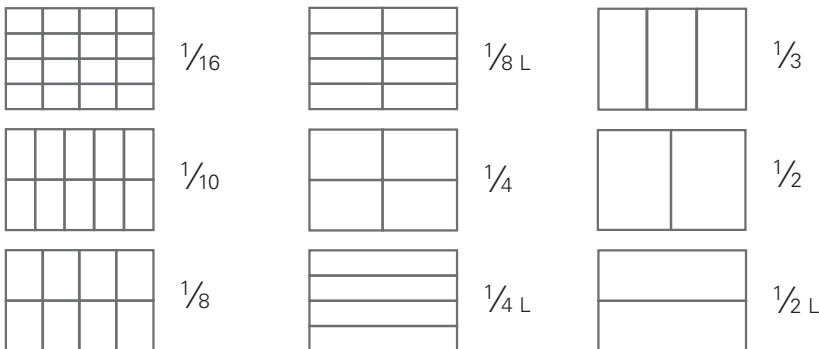
The variable Variobox Black insert boxes ensure reliable storage and safekeeping of small electronic components. The internal radius ensures complete emptying. The cams of the base offer good sliding properties on production chutes and provide a clean support on smooth surfaces. The Variobox Black insert boxes are designed to be conductive and each box can be marked separately.




### Applications

The Variobox Black insert boxes protect your electronic components against electrostatic discharge and fit into both the Blackline and the Newbox Black containers.

### Arrangements



### Special types

All non-stock items are marked thus  and available on request.







**1608.070** Insert box VB MC H70

Ext. dimensions:	<b>160x87x70 mm</b>
Int. dimensions:	132x60x67 mm
Useable height:	70 mm
Volume:	0.5 l
Weight:	94 g

**1/3: 300x200mm**

Material:	PP
No. per pallet:	2400 pcs
No. per pack:	60 pcs
division	1/3 stackable
for container	300x200 mm



**0609.055** Insert box VB MC H55

Ext. dimensions:	<b>64x89x55 mm</b>
Int. dimensions:	60x84x52 mm
Useable height:	52 mm
Volume:	0.3 l
Weight:	37 g

**1/16: 400x300mm**

Material:	PS
No. per pallet:	3696 pcs
No. per pack:	462 pcs
division	1/16
for container	400x300 mm



**2612.070** Insert box VB MC H70

Ext. dimensions:	<b>260x120x70 mm</b>
Int. dimensions:	232x93x67 mm
Useable height:	70 mm
Volume:	1.4 l
Weight:	157 g

**1/3: 400x300mm**

Material:	PP
No. per pallet:	1200 pcs
No. per pack:	30 pcs
division	1/3 stackable
for container	400x300 mm



**1309.055** Insert box VB MC H55

Ext. dimensions:	<b>128x89x55 mm</b>
Int. dimensions:	124x84x52 mm
Useable height:	52 mm
Volume:	0.5 l
Weight:	63 g

**1/8: 400x300mm**

Material:	PS
No. per pallet:	1920 pcs
No. per pack:	60 pcs
division	1/8
for container	400x300 mm



**2517.095** Insert box VB MC H95

Ext. dimensions:	<b>250x175x95 mm</b>
Int. dimensions:	242x158x88 mm
Useable height:	95 mm
Volume:	3.3 l
Weight:	274 g

**1/2: 400x300mm**

Material:	PP
No. per pallet:	256 pcs
No. per pack:	16 pcs
division	1/2
for container	400x300 mm



**1318.055** Insert box VB MC H55

Ext. dimensions:	<b>128x178x55 mm</b>
Int. dimensions:	124x173x52 mm
Useable height:	52 mm
Volume:	1.1 l
Weight:	100 g

**1/4: 400x300mm**

Material:	PS
No. per pallet:	960 pcs
No. per pack:	60 pcs
division	1/4
for container	400x300 mm



**9980.151** Label for VB H55

Ext. dimensions:	<b>55x10 mm</b>
Material:	Paper
No. per pack:	3000 pcs

loose packed in a bag  
suitable for VB / VB MC H55 (ex 1711)



**1711.055** Insert box VB MC H55

Ext. dimensions:	<b>179x112x55 mm</b>
Int. dimensions:	173x106x52 mm
Useable height:	55 mm
Volume:	1.0 l
Weight:	110 g

**1/10: 600x400mm**

Material:	PP
No. per pallet:	1120 pcs
No. per pack:	70 pcs
division 1/10 with divider for container 600x400 mm	



**1308.110** Insert box VB MC H110

Ext. dimensions:	<b>137x87x110 mm</b>
Int. dimensions:	132x82x105 mm
Useable height:	105 mm
Volume:	1.1 l
Weight:	150 g

**1/16: 600x400mm**

Material:	PS
No. per pallet:	768 pcs
No. per pack:	96 pcs
division 1/16 for container 600x400 mm	



**1711.011** Loose lid for VB MC 1711

Ext. dimensions:	<b>179x112 mm</b>
Weight:	43 g
Material:	PP

No. per pallet:	5888 pcs
No. per pack:	368 pcs
accessories for 1711.055	



**1713.110** Insert box VB MC H110

Ext. dimensions:	<b>137x174x110 mm</b>
Int. dimensions:	131x168x105 mm
Useable height:	105 mm
Volume:	2.3 l
Weight:	255 g

**1/8: 600x400mm**

Material:	PS
No. per pallet:	384 pcs
No. per pack:	48 pcs
division 1/8 for container 600x400 mm	



**1042.002** Divider for VB MC 1711

Ext. dimensions:	<b>109x42 mm</b>
Weight:	10 g
Material:	PP

No. per pallet:	84000 pcs
No. per pack:	1500 pcs
accessories for 1711.055	



**2708.110** Insert box VB MC H110

Ext. dimensions:	<b>274x87x110 mm</b>
Int. dimensions:	268x82x105 mm
Useable height:	105 mm
Volume:	2.3 l
Weight:	242 g

**1/8L: 600x400mm**

Material:	PS
No. per pallet:	384 pcs
No. per pack:	48 pcs
division 1/8L for container 600x400 mm	



**2717.110** Insert box VB MC H110

Ext. dimensions:	<b>274x174x110 mm</b>
Int. dimensions:	268x168x105 mm
Useable height:	105 mm
Volume:	4.7 l
Weight:	410 g

**1/4: 600x400mm**

Material:	PS
No. per pallet:	192 pcs
No. per pack:	24 pcs
division 1/4 for container 600x400 mm	



**3527.110** Insert box VB MC H110  
 Ext. dimensions: **274x350x110 mm**  
 Int. dimensions: 268x344x105 mm  
 Useable height: 105 mm  
 Volume: 9.7 l  
 Weight: 746 g

**1/2: 600x400mm**  
 Material: PS  
 No. per pallet: 96 pcs  
 No. per pack: 12 pcs  
 division 1/2  
 for container 600x400 mm



**5508.110** Insert box VB MC H110  
 Ext. dimensions: **550x87x110 mm**  
 Int. dimensions: 544x81x105 mm  
 Useable height: 105 mm  
 Volume: 4.6 l  
 Weight: 511 g

**1/4L: 600x400mm**  
 Material: PS  
 No. per pallet: 192 pcs  
 No. per pack: 24 pcs  
 division 1/4L  
 for container 600x400 mm



**5517.110** Insert box VB MC H110  
 Ext. dimensions: **550x174x110 mm**  
 Int. dimensions: 544x168x105 mm  
 Useable height: 105 mm  
 Volume: 9.6 l  
 Weight: 783 g

**1/2L: 600x400mm**  
 Material: PS  
 No. per pallet: 112 pcs  
 No. per pack: 14 pcs  
 division 1/2L  
 for container 600x400 mm



**9980.048** Label holder for VB H110  
 Ext. dimensions: **74x104 mm**  
 No. per pack: 150 pcs

suitable for VB / VB MC H110  
 hard film

# FLIPTOPBOX BLACK

Hinged box conductive FTB MC


The ESD version of the Fliptopbox Black hinged box is made from dimensionally stable polypropylene. The range covers a total of seven sizes. You can safely and firmly package your electronic components using a lid and box made from a single piece with a snap lock and integral hinge.



## Applications

The conductive Fliptopbox models are ideally suited for safely storing and shipping small electronic parts.

## Special types

All non-stock items are marked thus  and available on request.





**1308.014** Hinged box FTB MC

Ext. dimensions: **136x87x19 mm**  
 Int. dimensions: 130x80x14 mm  
 Useable height: 14 mm  
 Volume: 0.1 l

Weight: 47 g  
 Material: PP  
 No. per pallet: 5120 pcs  
 No. per pack: 320 pcs



**1814.080** Hinged box FTB MC

Ext. dimensions: **180x140x80 mm**  
 Int. dimensions: 178x133x78 mm  
 Useable height: 78 mm  
 Volume: 1.8 l

Weight: 170 g  
 Material: PP  
 No. per pallet: 480 pcs  
 No. per pack: 60 pcs



**1308.030** Hinged box FTB MC

Ext. dimensions: **136x87x35 mm**  
 Int. dimensions: 130x80x30 mm  
 Useable height: 30 mm  
 Volume: 0.3 l

Weight: 56 g  
 Material: PP  
 No. per pallet: 2560 pcs  
 No. per pack: 80 pcs



**2212.060** Hinged box FTB MC

Ext. dimensions: **225x125x60 mm**  
 Int. dimensions: 221x121x55 mm  
 Useable height: 55 mm  
 Volume: 1.5 l

Weight: 188 g  
 Material: PP  
 No. per pallet: 576 pcs  
 No. per pack: 72 pcs



**1308.050** Hinged box FTB MC

Ext. dimensions: **136x87x55 mm**  
 Int. dimensions: 130x80x50 mm  
 Useable height: 50 mm  
 Volume: 0.5 l

Weight: 65 g  
 Material: PP  
 No. per pallet: 1792 pcs  
 No. per pack: 56 pcs



**MOS 1 MC** Hinged box FTB MC

Ext. dimensions: **118x78x20 mm**  
 Int. dimensions: 90x50x15 mm  
 Useable height: 15 mm  
 Volume: 0.1 l

Weight: 53 g  
 Material: PP  
 No. per pallet: 2000 pcs  
 No. per pack: 250 pcs



**MOS 2 MC** Hinged box FTB MC

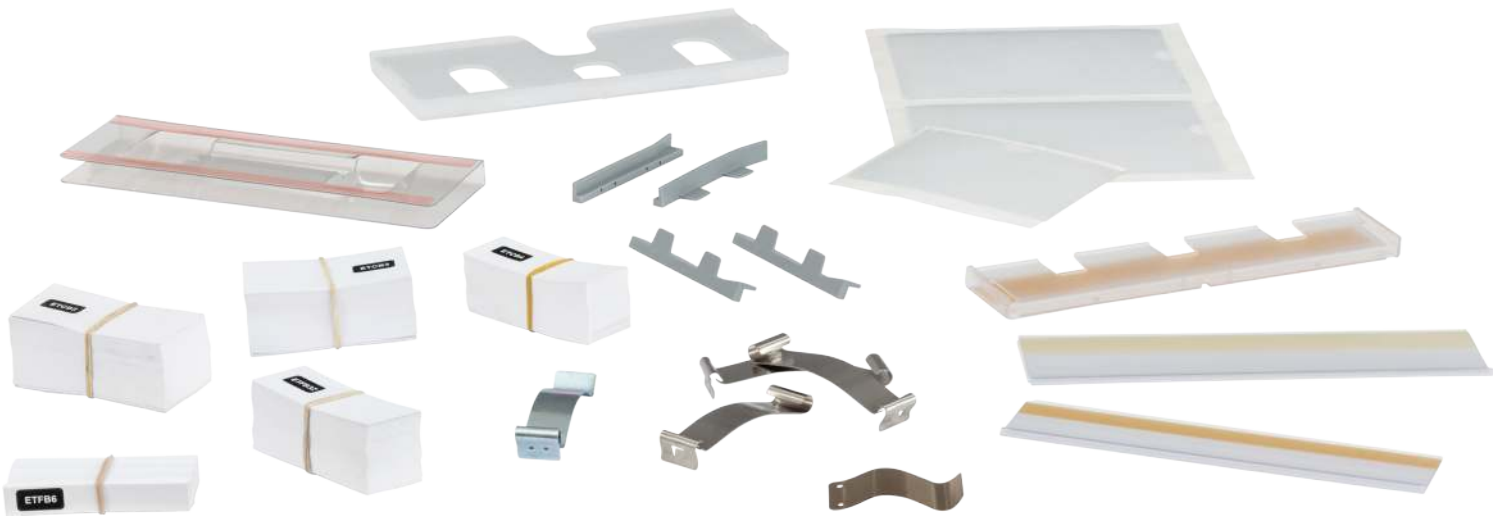
Ext. dimensions: **190x112x20 mm**  
 Int. dimensions: 162x95x15 mm  
 Useable height: 15 mm  
 Volume: 0.1 l

Weight: 135 g  
 Material: PP  
 No. per pallet: 800 pcs  
 No. per pack: 100 pcs



# **LABELLING & PRINTING**

Our range of possibilities for labelling and printing means there are hardly any limits to customising your containers.




## **Labelling**

This section includes the possible ways of labelling stackable containers of the Logiline, Blackline, Newbox and Newbox Black ranges. You will find labels for other product lines in the respective section.

## **Printing**

Hot-air and injection markings are particularly popular for customising stackable containers and open-fronted storage boxes, and they can also be applied to other product ranges.

## **Special types**

All non-stock items are marked thus  and available on request.



## Examples of use

### Label clips



9980.002 / 001



9980.005 / 004



EH 2

### Label pockets



9980.050 / 950



9980.039 / 939

### Label holders



9980.085 / 086



9980.121 / 821



9980.046 / 045



EH 4



EH 5



EH 6

### Printing



For more information, see Printing section.

# **LABELLING**

To provide you with the perfect solution for identification purposes, we offer labels and label clips in various designs that can be individually attached in different ways.



The RFID or barcode-labels are extremely adherent, scratch-resistant and developed especially for transport containers. They are therefore also suitable for cleaning plant and ultrasonic cleaning.


## **Suitable for**

- Logiline
- Blackline
- Newbox
- Newbox Black

## **Tip**

We will gladly make you offer tailored to your specific requirements. Please contact us and we will be very pleased to advise you.

## **Special types**

All non-stock items are marked thus  and available on request.





**9980.002** Label clip LL / BL

Ext. dimensions: **60x30 mm**

Material: Metal

loose, unassembled

zinc, for riveting

riveted: 9980.001



**EH 5** Label holder

Ext. dimensions: **190x42 mm**

Material: PVC-U

No. per pack: 10 pcs

loose, unassembled

self adhesived



**9980.046** Label holder H90 LL / BL

Ext. dimensions: **215x90 mm**

Material: PP

loose, unassembled

injection molded

assembled: 9980.045



**9980.005** Label clip LL / BL

Ext. dimensions: **86x20 mm**

Material: Metal

loose, unassembled

zinc, to plug on

plugged on: 9980.004



**EH 6** Label holder

Ext. dimensions: **210x58 mm**

Material: PVC-U

No. per pack: 10 pcs

loose, unassembled

self adhesived



**9980.047** UK-Clips zu 9980.046

Ext. dimensions: **13x9 mm**

Material: Spring steel

loose, unassembled

for label holder H90



**EH 2** Label clip NB / NB MC

Ext. dimensions: **84x20 mm**

Material: Metal

No. per pack: 100 pcs

loose, unassembled

zinc, to plug on



**9980.121** Label holder H70

Ext. dimensions: **210x70 mm**

Material: APET

loose, unassembled

vacumn formed, self adhesived

assembled: 9980.821



**9980.050** Label pocket

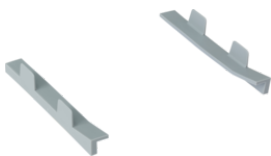
Ext. dimensions: **115x83 mm**

Material: PVC-P

loose, unassembled

film, self adhesived, ESD-protected

bonded: 9980.950



**EH 4** Label holder NB / NB MC

Ext. dimensions: **90x10 mm**

Material: PP

assembled on container

available only with container



**9980.085** Label holder H44

Ext. dimensions: **215x44 mm**

Material: ABS

loose, unassembled

injection molded, self adhesived

assembled: 9980.086



**9980.039** Label pocket

Ext. dimensions: **156x115 mm**

Material: PVC-P

loose, unassembled

film, self adhesived, ESD-protected

bonded: 9980.939

# PRINTING

---

Refine your containers with your logo or your company name. That way you will also create a good impression on the move.

We hot emboss your company logo according to your template or in standard font letters in the following colours:



It is also possible to carry out marking using injection into the plastic during the production process or also using pad or screen printing.

The durable marking withstands the effects of the production process and the weather and is suitable for modern cleaning plants.

## Tip

We will gladly make you offer tailored to your specific requirements. Please contact us and we will be very pleased to advise you.



## Examples of use

Hot-embossed marking (with standard lettering)



Hot-embossed marking (with company logo)



Injected marking (with company logo)



# STORE ORGANISATION

Products from our Store Organisation range make your internal transport more and protect your goods, and your employees.




## Rollboys

Rollboys are an ideal addition for the safe and easy transport of our SGL- and Euro-standard stackable containers (area 600×400 mm). The space-saving rollboys (with or without ESD protection) are made of almost indestructible ABS, are practical, robust and also suitable for heavy loads.

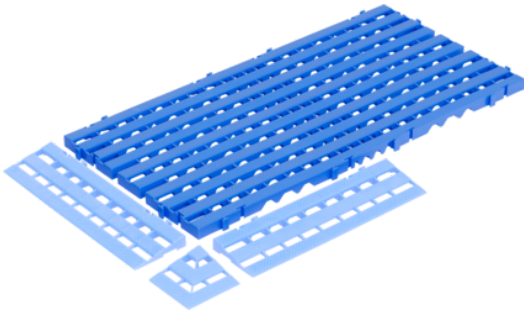
## Flore mat

The flore mat grating optimises efficient and reliable shop floor equipment and benefits occupational health and safety and orderliness in equal measure. It is also suitable for use with rollboys.

## Special types

All non-stock items are marked thus  and available on request.

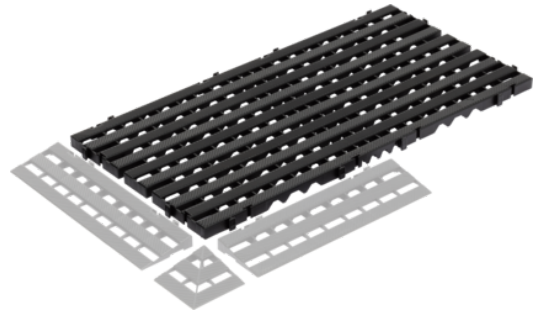




**BR** Floor mat

Ext. dimensions:	<b>800x400x25 mm</b>
Weight:	1.50 kg
Material:	PE-LD

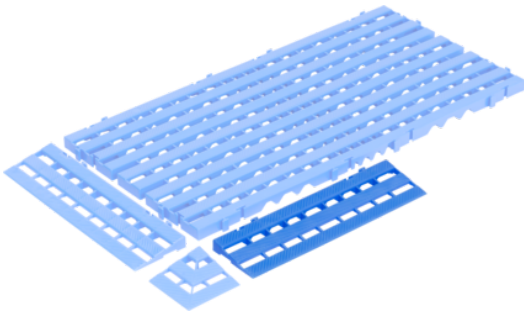
No. per pallet:	176 pcs
No. per pack:	4 pcs
	indoor, not weather-resistant



**BR MC** Floor mat ESD

Ext. dimensions:	<b>800x400x25 mm</b>
Weight:	1.50 kg
Material:	PP

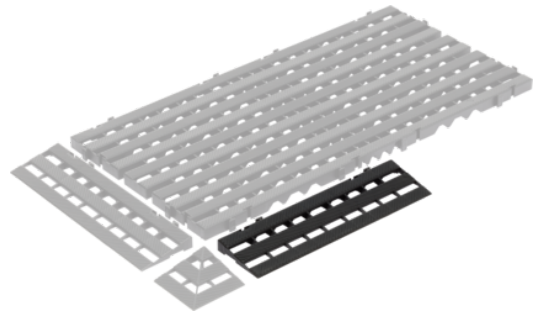
No. per pallet:	176 pcs
No. per pack:	4 pcs
	indoor, not weather-resistant



**BR A** Ramp for floor mat

Ext. dimensions:	<b>400x110x25 mm</b>
Weight:	0.16 kg
Material:	PE-LD

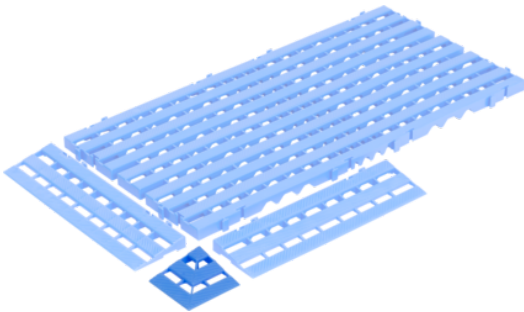
No. per pallet:	960 pcs
No. per pack:	12 pcs
	indoor, not weather-resistant



**BR A MC** Ramp for floor mat ESD

Ext. dimensions:	<b>400x110x25 mm</b>
Weight:	0.16 kg
Material:	PP

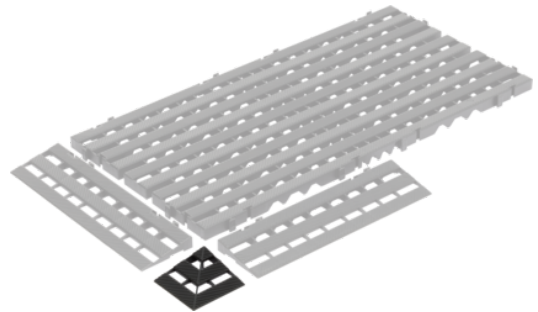
No. per pallet:	960 pcs
No. per pack:	12 pcs
	indoor, not weather-resistant



**BR E** Corner piece for floor mat

Ext. dimensions:	<b>110x110 mm</b>
Weight:	0.04 kg
Material:	PE-LD

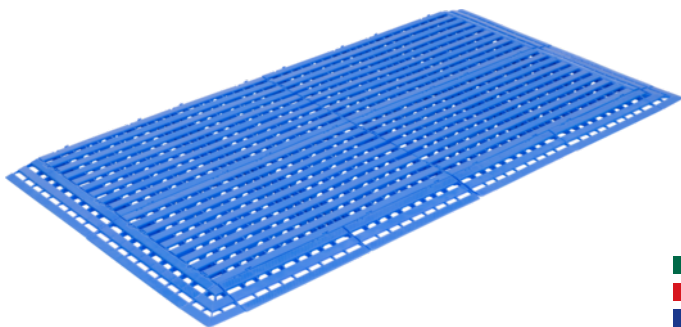
No. per pack:	10 pcs
	indoor, not weather-resistant



**BR E MC** Corner piece f. floor mat ESD

Ext. dimensions:	<b>110x110 mm</b>
Weight:	0.04 kg
Material:	PP

No. per pack:	10 pcs
	indoor, not weather-resistant



**BR K Kit** Floor mat kit

Ext. dimensions:	<b>1820x910x25 mm</b>
Weight:	7.24 kg
Material:	PE-LD

No. per pack:	1 pcs
Kit:	4 BR, 8 BR A, 2 BR E
	indoor, not weather-resistant



**BR K MC Kit** Floor mat KIT ESD

Ext. dimensions:	<b>1820x910x25 mm</b>
Weight:	7.24 kg
Material:	PP

No. per pack:	1 pcs
Kit:	4 BR, 8 BR A, 2 BR E
	indoor, not weather-resistant



**RB 6242 G KR** Transport trolley RB

Ext. dimensions:	<b>620x420x170 mm</b>
Int. dimensions:	608x408 mm
Load capacity:	250 kg
Weight:	3.63 kg
Material:	ABS

No. per pallet:	40 pcs
No. per pack:	1 pcs
	closed
	wheels of PP



**6400.005** Transport trolley ESD

Ext. dimensions:	<b>620x420x170 mm</b>
Int. dimensions:	608x408 mm
Load capacity:	250 kg
Weight:	4.29 kg
Material:	ABS

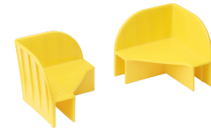
No. per pallet:	70 pcs
No. per pack:	5 pcs
	open
	plastic wheels + rubber coating
	roles and frames conductive



**RB 6242 G GR** Transport trolley RB

Ext. dimensions:	<b>620x420x170 mm</b>
Int. dimensions:	608x408 mm
Load capacity:	250 kg
Weight:	3.63 kg
Material:	ABS

No. per pallet:	40 pcs
No. per pack:	1 pcs
	closed
	plastic wheels + rubber coating



**9980.023** Stacking corners

Ext. dimensions:	<b>100x100x85 mm</b>
Weight:	77 g
Material:	PP
No. per pallet:	2304 pcs

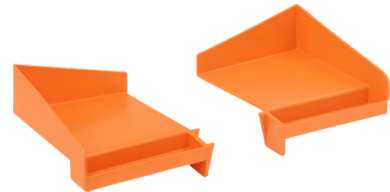
No. per pack:	144 pcs
	securing pallet stacking
	on pallet frames without lid
	loadable to 1000kg per corner



**RB 6242 O KR** Transport trolley RB

Ext. dimensions:	<b>620x420x170 mm</b>
Int. dimensions:	608x408 mm
Load capacity:	250 kg
Weight:	3.63 kg
Material:	ABS

No. per pallet:	40 pcs
No. per pack:	1 pcs
	open
	wheels of PP



**9980.010** Pair of anti-skid protection l/r

Ext. dimensions:	<b>118x164 mm</b>
Weight:	117 g
Material:	PP
No. per pallet:	1344 pcs

No. per pack:	42 pcs
	for internal transport security of
	EPAL products made of wood
	packed in pairs (= 672 / 21 pairs)



**RB 6242 O GR** Transport trolley RB

Ext. dimensions:	<b>620x420x170 mm</b>
Int. dimensions:	608x408 mm
Load capacity:	250 kg
Weight:	3.63 kg
Material:	ABS

No. per pallet:	40 pcs
No. per pack:	1 pcs
	open
	plastic wheels + rubber coating





## Stacking corners / anti-skid protection

Stacking corners for wooden and plastic pallet frames and anti-skid protection elements for wooden pallets safeguard your highly valuable and heavy goods without the need for additional fixing or the use of film.



Stacking corners



anti-skid protection



# OFFICE ORGANISATION


Our Office Organisation range offers organisation systems and storage solutions for the office with proven quality: products that are robust and have been fully thought through to ensure that you can use your time in the office even more effectively.



## Tip

We will gladly make you offer tailored to your specific requirements. Please contact us and we will be very pleased to advise you.

## Special types

All non-stock items are marked thus  and available on request.





**0540.015** Round rubbish bin

Ext. dimensions: **Ø250xH400 mm**

Weight: 0.82 kg

Material: PS

No. per pallet: 108 pcs

slightly conical with brim

15 liter



**0540.040** Square rubbish bin

Ext. dimensions: **235x330x530 mm**

Weight: 1.64 kg

Material: PP rec.

No. per pallet: 90 pcs

conical with 2 grip openings

40 liter



**0615.036** Round rubbish bin

Ext. dimensions: **Ø330xH500 mm**

Weight: 1.41 kg

Material: PP

No. per pallet: 90 pcs

conical with 2 grip openings, no lid

36 liter

Option: red lid 0615.100.



**0540.040** Square rubbish bin ESD

Ext. dimensions: **235x330x530 mm**

Weight: 1.64 kg

Material: PP

No. per pallet: 90 pcs

conical with 2 grip openings

40 liter



**0615.100** Collar for 0615.036

Weight: 0.32 kg

Material: PS

No. per pallet: 848 pcs

No. per pack: 53 pcs



**3526.060** Letter tray A4 ESD

Ext. dimensions: **343x258x53 mm**

Weight: 0.36 kg

Material: PS

No. per pallet: 224 pcs

No. per pack: 14 pcs

suitable for letter tray lengthwise





**2921.060** Universal tray

Ext. dimensions: **287x208x60 mm**

Weight: 0.27 kg

Material: PP

No. per pallet: 1000 pcs

No. per pack: 20 pcs



**0025.000** Slide U 250mm

Ext. dimensions: **250 mm**

Material: PVC

No. per pallet: 300 pcs

> drawer 290x210, lengthwise fitting

> trays 360x290, cross drawers



**3629.060** Universal tray

Ext. dimensions: **356x287x60 mm**

Weight: 0.43 kg

Material: PP

No. per pallet: 480 pcs

No. per pack: 20 pcs



**0032.000** Slide U 320mm

Ext. dimensions: **320 mm**

Material: PVC

No. per pallet: 300 pcs

No. per pallet: 300 pcs

> drawer 360x290, lengthwise fitting



**4836.100** Universal tray

Ext. dimensions: **476x358x100 mm**

Weight: 0.82 kg

Material: PP TV20%

No. per pallet: 300 pcs

No. per pack: 20 pcs



**0044.000** Slide U 440mm

Ext. dimensions: **440 mm**

Material: PVC

No. per pallet: 300 pcs

> drawer 480x360, lengthwise fitting

> trays 480x360, cross drawers



# References

ALGRA GROUP

DECTRAIS

**GAMPER**  
Gemüsekulturen

*intercable*

 **ARISTON**  
THERMO GROUP



Pushing Performance

**KAISER+KRAFT**

ALLES FÜR DIE FIRMA.

**BayWa** Bau & Garten  
*Hier bin ich genau*

**fischer**   
innovative solutions

**HELLWEG**  
Die Profi-Baumärkte **IDEEN MUSS MAN HABEN**

**KISTLER**  
measure. analyze. innovate.

**Continental**   
The Future in Motion

**Flotec**

  
Husqvarna  
Group

**Landi**





THERESE MÖLK  
Pures Brot.

# List of abbreviations / glossary

In alphabetical order

## Codes for base, wall and grip types

<b>000</b>	Closed base (SGL)
<b>007</b>	Closed flat base
<b>25x/45x</b>	Perforated base (SGL)
<b>004</b>	Ribbed base (12.0 mm)
<b>611</b>	Ribbed base (18.5 mm)
<b>626</b>	Ribbed base (15.0 mm)
<b>624</b>	Perimeter ribbed base (15.0 mm)
<b>064</b>	Low-noise, perimeter ribbed base (13.0 mm)
<b>530</b>	Slitted base, reverse stackable (SGL)
<b>STR</b>	Stackable corrugated base
<b>UST</b>	Reverse stackable base
<b>V1</b>	Closed flat base
<b>V3</b>	Perforated flat base
<b>V4</b>	Ribbed base (12.0 mm)
<b>V6</b>	Integrated system base (modularly stackable)
<b>x00</b>	Closed walls
<b>x07</b>	Closed walls
<b>25x/45x</b>	Perforated walls
<b>VI</b>	Walls with one front end open (Vista)
<b>V1</b>	Closed walls
<b>V2</b>	Perforated walls
<b>V5</b>	Walls with one front end open
<b>V7</b>	Walls with one long side open
<b>0xx</b>	Without open grips
<b>2xx</b>	2 open grips
<b>4xx</b>	4 open grips
<b>SM</b>	Without open grips (senza maniglie)
<b>2M</b>	2 open grips (2 maniglie) or 2 carrying grips
<b>3M</b>	3 open grips (3 maniglie)

## Codes for product groups (brands)

<b>AB</b>	Automatic Box
<b>AB MC</b>	Automatic Box Black
<b>BL</b>	Blackline
<b>BM</b>	Box Mobil
<b>CB</b>	Classic Box
<b>CB MC</b>	Classic Box Black
<b>FA</b>	Futura
<b>FB</b>	Food Box
<b>FTB</b>	Flip Top Box
<b>FTB MC</b>	Flip Top Box Black
<b>LA</b>	Labelling
<b>LB</b>	Lagerbox
<b>LL</b>	Logiline
<b>MB</b>	Minibox
<b>NB</b>	Newbox
<b>NB MC</b>	Newbox Black
<b>OO</b>	Office Organisation
<b>PA</b>	Printorama
<b>PH</b>	PCB holder
<b>PR</b>	Printing
<b>RS</b>	Rack-System
<b>SB</b>	Systembox
<b>SD</b>	Stand
<b>SDP</b>	Standplus
<b>SO</b>	Store Organisation
<b>ST</b>	Stala
<b>VB</b>	Variobox
<b>VB MC</b>	Variobox Black

## Codes for products

<b>A</b>	Ramp
<b>AHS</b>	Hanging rail
<b>AR</b>	Additional frame
<b>AS</b>	Pull-out stop
<b>B</b>	Big or Box
<b>BR</b>	Floor mat
<b>C</b>	Complet
<b>D</b>	Lid or Double
<b>DIVIT</b>	Divider
<b>DR</b>	Double rack
<b>E</b>	Simple, One piece or Slot-in rack
<b>EH</b>	Labelling
<b>ER</b>	Simple rack
<b>ET</b>	Labels
<b>F</b>	Flexi
<b>FB</b>	Shelf
<b>FS CH</b>	Folding/sliding cabinet
<b>FS CHT</b>	Folding/sliding counter
<b>G</b>	Basic rack/frame or Closed
<b>GR</b>	Basic rack/frame or Rubber roll
<b>G2</b>	Official container for vegetable producers (CH)
<b>Hxx</b>	Product height
<b>K</b>	Kit
<b>KR</b>	Plastic rolls
<b>LT</b>	Length divider
<b>M</b>	Mobile or Magazine
<b>MG</b>	Large magazine
<b>NBC</b>	Newbox lid (Coperchio)
<b>O</b>	Open
<b>OSB</b>	Open-fronted storage box
<b>P</b>	Perfect
<b>PC</b>	Plastic case
<b>QT</b>	Cross divider
<b>RB</b>	Rollboy
<b>S</b>	Sliding closure or Set
<b>SC</b>	Snap closure or Scanner plate
<b>SE</b>	Shop-adjustable rack
<b>SG</b>	Without hinge (Senza Gancio)
<b>SH</b>	Wall rack (StellingHoogte)
<b>SR</b>	Movable rack
<b>SS</b>	Screen
<b>T</b>	Top
<b>TR</b>	Transparent
<b>TRP</b>	Transport safety bracket
<b>TW</b>	Divider
<b>U</b>	U profile
<b>USG</b>	Large insert box for drawer systems
<b>USN</b>	Small insert box for drawer systems
<b>xxxx</b>	The first four digits of numerical type codes usually mean LxWxH (LxW = external dimensions /H = stacking or external height)
<b>Z</b>	Intermediate height

## Sundries

<b>H/H1/H2</b>	Product designation according to SGL standardisation
<b>MC</b>	Conductive material (Materiale Conduttivo)
<b>ESD</b>	Electrostatic discharge
<b>PCB</b>	Printed circuit board
<b>SBC</b>	Swiss association of bakers and confectioners
<b>SGL</b>	Swiss Logistics Association

# Chemical resistance list

## Definitions and abbreviations

### Codes

#### a = Very good resistance

When exposed for more than 30 days no, or minor damage.

#### b = Resistant

In case of prolonged exposure, depending on the type of plastic (hair cracking, mechanical strength, discoloration, etc.).

#### c = Inconsistent

Can destroy the plastic, deformation can occur.

Substances listed in German only.

### Plastics

<b>ABS</b>	Acrylonitrile butadiene styrene copolymer
<b>PA</b>	Polyamide
<b>PC</b>	Polycarbonate
<b>PE-HD</b>	High density polyethylene (hard)
<b>PE-LD</b>	Low density polyethylene (soft)
<b>POM</b>	Polyoxymethylene
<b>PP</b>	Polypropylene
<b>PS</b>	Polystyrene
<b>PUR</b>	Polyurethane
<b>PVC-P</b>	Soft-PVC moulding compound (plasticized)
<b>PVC-U</b>	Hard-PVC moulding compound (unplasticized)
<b>SAN</b>	Styrene acrylonitrile copolymer

Substance	Concentration %	Temperature °C														
			ABS	PA	PC	PE-HD	PE-LD	POM	PP	PS	PUR	PVC-P	PVC-U	SAN		
Acetaldehyd	100	20	b	c	b	a	b	a	b	c	a	b	c	c	c	c
Acetamid	100	20	a	a	c	a	a	a	a	a	c	a	a	c	c	a
Acetanhydrid	100	20	c	c	c	b	c	c	b	c	c	c	c	c	c	c
Aceton	100	20	c	a	c	a	a	b	a	c	a	c	c	c	c	c
Acetonitril	100	20	c	a	c	a	a	c	a	c	a	c	c	c	c	c
Acetophenon	100	20	c	c	c	a	a	a	a	c	c	c	c	c	c	c
2-Acetoxybenzoesäure	100	20	a	a	a	a	a	c	a	b	a	a	b	b	a	a
Acetylchlorid	100	20	c	b	c	b	b	c	b	a	c	c	c	c	c	c
Acetylentetrachlorid	100	20	c	a	c	b	c	a	c	c	a	c	c	c	c	c
Acetylsalicylsäure	100	20	a	a	a	a	a	c	a	a	a	a	b	b	a	a
Acrylnitril	100	20	c	a	c	a	a	c	b	c	c	c	c	c	c	c
Acrylonitril	100	20	c	a	c	a	a	c	b	c	c	c	c	c	c	c
Acrylsäurebutylester	100	20	c	a	c	a	a	c	b	c	c	c	c	c	c	c
Acrylsäureethylester	100	20	c	a	c	a	a	c	b	c	c	c	c	c	c	c
Acrylsäurenitril	100	20	c	a	c	a	a	c	b	c	c	c	c	c	c	c
Adipinsäure	100	20	b	a	a	a	a	b	a	a	b	a	a	a	b	a
Alaun	100	20	a	c	a	a	a	b	a	b	b	a	a	a	a	a
Alkohol	100	20	b	c	a	a	a	a	a	b	a	b	a	b	a	b
Allylacetat	100	20	b	c	b	a	a	b	a	b	b	b	b	b	b	b
Allylalkohol	100	20	b	c	b	a	a	b	a	b	b	b	b	b	b	b
Allylchlorid	100	20	c	c	c	b	b	c	b	c	c	c	c	c	c	c
Aluminiumacetat	100	20	a	a	a	a	a	b	a	b	b	a	a	a	a	a
Aluminiumchlorid	100	20	a	b	a	a	a	a	a	a	a	a	a	a	a	b
Aluminiumoxid	100	20	a	a	b	a	a	c	a	a	b	a	a	a	a	b
Aluminiumhydroxid	100	20	b	a	b	a	a	a	a	b	b	a	a	a	a	b
Aluminiumhydroxidacetat	100	20	a	a	a	a	a	b	a	b	b	a	a	a	a	a
Aluminiumnitrat	100	20	b	a	a	a	a	b	a	b	a	a	a	a	a	b
Aluminiumoxid	100	20	b	a	a	a	a	b	a	b	a	a	a	a	a	b
Aluminiumsulfat	100	20	b	a	a	a	a	b	a	b	a	a	a	a	a	b
Aluminiumtrichlorid	100	20	a	b	a	a	a	a	a	a	a	a	a	a	a	b
Ameisensäure	100	20	c	c	a	a	a	b	a	a	b	b	b	b	b	b
Ameisensäureamid	100	20	c	b	a	a	a	a	a	c	a	b	b	c	c	c
Aminobenzol	100	20	c	a	c	a	a	a	a	c	c	c	c	c	c	c
Aminoessigsäure	10	20	a	a	a	a	a	b	a	a	a	a	a	a	a	a
Aminomethan	100	20	b	c	c	a	b	a	a	b	c	c	b	b	b	b
Ammoniak	100	20	c	b	c	a	a	c	a	b	c	b	a	a	b	b
Ammoniumacetat	50	20	a	a	a	a	a	a	a	a	a	a	a	a	a	a
Ammoniumalaun	100	20	b	a	a	a	a	c	a	b	a	a	a	a	a	b
Ammoniumaluminiumsulfat	100	20	b	a	a	a	a	c	a	b	b	a	a	a	a	b
Ammoniumbicarbonat	100	20	a	a	b	a	a	a	a	a	a	a	a	a	a	a
Ammoniumbiphosphat	100	20	a	c	b	a	a	b	a	a	b	a	a	a	a	a
Ammoniumcarbonat	100	20	a	a	a	a	b	c	a	a	a	b	b	a	a	a
Ammoniumchlorid	100	20	a	b	a	a	a	c	a	a	a	a	a	a	a	a
Ammoniumdihydrogenphosphat	100	20	a	c	b	a	a	b	a	a	b	a	a	a	a	a
Ammoniumhydroxid	25	20	c	b	c	a	a	c	a	b	c	b	a	a	b	b
Ammoniumhydrogencarbonat	100	20	a	a	b	a	a	a	a	a	a	a	a	a	a	a
di-Ammoniumhydrogenphosphat	100	20	a	c	b	a	a	b	a	a	b	a	a	a	a	a
Ammoniumhydroxid	100	20	a	b	a	a	a	c	a	a	a	a	a	a	a	a
Ammoniumnitrat	100	20	b	b	b	a	a	a	a	b	a	b	a	a	a	b
Ammoniumoxalat	100	20	a	b	a	a	a	b	a	a	a	b	a	a	a	a
Ammoniumperoxodisulfat	100	20	a	c	b	a	a	c	a	a	b	a	a	a	a	a
Ammoniumpersulfat	100	20	a	c	b	a	a	c	a	a	b	a	a	a	a	a
mono-Ammoniumphosphat	100	20	a	c	b	a	a	b	a	a	b	a	a	a	a	a
Ammoniumsulfat	100	20	b	a	a	a	a	b	a	b	a	a	a	a	a	b
Ammoniumsulod	100	20	b	a	a	a	a	c	a	b	a	a	a	a	a	b
Ammonnitrat	100	20	b	b	b	a	a	a	a	b	b	a	a	a	a	b
Ammonsalpeter	100	20	b	b	b	a	a	a	a	b	b	a	a	a	a	b
Ammonsulfat	100	20	b	a	a	a	a	b	a	b	a	a	a	a	a	b
Amylacetat	100	20	c	a	c	a	a	a	a	c	c	c	c	c	c	c
Amylalkohol	100	20	a	b	b	a	a	a	a	a	b	b	b	b	a	a
Anilin	100	20	c	a	c	a	a	a	a	c	c	c	c	c	c	c
Anisol	100	20	c	a	c	b	b	c	b	c	c	c	c	c	c	c
Anon	100	20	c	a	c	b	c	c	b	c	c	c	c	c	c	c
Antimon(III)-chlorid	100	20	a	c	a	a	b	b	a	a	a	a	a	a	a	a
Antimontrichlorid	100	20	a	c	a	a	b	b	a	a	a	a	a	a	a	a
Aqua Regia	100	20	c	c	c	c	c	c	c	c	c	c	c	c	c	c
Arsen(V)-oxid Hydrat	100	20	a	b	a	a	b	c	a	a	b	a	a	a	a	a
Arsensäure	100	20	a	b	a	a	b	c	a	a	b	a	a	a	a	a
Ätzbaryt	100	20	a	a	c	a	b	c	b	a	a	a	a	a	a	a
Ätznatron	100	20	b	b	c	a	a	c	a	b	b	b	b	b	b	b
Bariumcarbonat	100	20	a	a	a	a	b	a	a	a	a	a	a	a	a	a
Bariumchlorid	100	20	a	a	a	a	b	a	a	a	a	a	a	a	a	a
Bariumhydroxid	100	20	a	a	a	c	a	b	c	b	a	a	a	a	a	a
Bariumsulfat	100	20	a	a	c	a	b	b	a	a	a	b	b	a	a	a
Bariumsulod	100	20	a	a	c	a	b	a	b	a	a	a	a	a	a	a
Barythydrat	100	20	a	a	c	a	b	c	b	a	a	a	a	a	a	a
Benzaldehyd	100	20	c	a	c	a	a	a	a	c	c	c	c	c	c	c
Benzin	100	20	c	a	a	a	b	b	b	c	a	c	c	c	c	c
Benzoessäure	100	20	b	c	a	a	a	b	a	b	a	a	a	a	a	b
Benzol	100	20	c	a	c	b	b	a	b	c	c	c	c	c	c	c
1,3-Benzoldiol	50	20	b	c	b	a	a	a	a	b	b	b	b	b	b	b
Benzolmonochlorid	100	20	c	a	c	b	c	a	b	c	c	c	c	c	c	c
Benzolsulfonsäure	100	20	c	c	c	a	a	b	b	a	b	c	c	c	c	c
Benzoylchlorid	100	20	c	c	c	b	b	a	c	c	c	b	b	c	c	c









# General Terms of Sale and Supply

## I. General provisions

- Orders only become binding with regard to type and scope of delivery after they have been confirmed by Supplier. Amendments and additions must be made in writing.
- In the case of ongoing business relationships, these Terms shall also apply to future transactions without any explicit reference being made to them if agreed by the partners in connection with an earlier order. Should other provisions arise on the part of Purchaser or Supplier in place of these Terms, they must be expressly agreed by the partners. Should individual provisions be invalid, the remaining provisions shall remain unaffected.
- Purchaser's purchasing conditions are only binding for Supplier if explicitly acknowledged by the latter.
- Information given by Supplier in printed matter and its information on the properties of its products is made on the basis of current technical knowledge and experience. In view of the variety of possible influences on the application of Supplier's products that are outside its control, the user of the product is not exempted from conducting its own tests and examinations. A legally binding assurance with regard to certain properties or the suitability for a specific application cannot be deduced either expressly or implicitly.
- Supplier reserves the right to make changes to its product range or its products at any time,

## II. Prices

- Unless otherwise agreed, prices are ex works, including packaging, and are subject to value added tax at the respective statutory rate.
- Country specific additions
  - Switzerland (CH) and Liechtenstein (LI)
    - Deliveries in excess of CHF 2'000.00 net goods value, will be made free-of-charge (Destination CH or LI).
    - The minimum net value per order is CHF 300.00. A surcharge of CHF 50.00 will be charged for orders below this value.
  - EU and non-EU countries (without CH & LI)
    - The minimum net value per order is € 1'000.00. For orders below this value a surcharge of € 150.00 will be charged.

## III. Supply and purchase obligations

- Delivery times begin upon receipt of all documentation required for the execution of the order and, if applicable, with the punctual supply of material and agreed advance payments.
- Should an agreed delivery time not be met through the fault of Supplier, Purchaser shall be entitled, to the exclusion of any further claims, to demand appropriate compensation or rescission of the contract following a reasonable period of grace, provided he has given notification of the rejection of the supply when the period of grace was agreed.
- In the case of ex works deliveries with pick-up by the customer, the goods must be collected within 10 working days. If this deadline is not met, the supplier reserves the right to charge additional storage and handling costs.
- Reasonable part deliveries and deviations of up to plus or minus ten per cent ( $\pm 10\%$ ) of the order are permissible.
- Cases of force majeure affecting Supplier or its subcontractors shall extend the delivery time accordingly. This also applies to intervention by the authorities, difficulties with the supply of energy and raw materials, strikes, lockouts and unforeseeable delivery problems, provided they are not attributable to Supplier. Supplier shall inform Purchaser of any such occurrence without delay.

## IV. Transfer of risk, packaging and shipping

- Even in the case of shipments made on a carriage-paid basis, the risk is transferred to Purchaser when the goods leave Supplier's site.
- In the case of shipment delays attributable to Purchaser, risk is transferred as soon as Purchaser has been notified that the goods are ready for shipment.
- Unless otherwise agreed, Supplier shall select the packaging and the mode of shipment at its discretion. The goods shall be insured against damage due to breakage, transport or fire at the written request of Purchaser, who shall bear the cost.

## V. Provision of material

- If materials are to be provided by Purchaser, they should be delivered in accordance with the agreed specification in good time at its cost and risk with a reasonable excess quantity of at least five per cent (5%).
- If these requirements are not met, the delivery period shall be extended accordingly. Except for cases of force majeure, Purchaser shall bear the resulting additional costs, including those for the resultant interruption of production.

## VI. Retention of title

- Deliveries are made under retention of title including the extended retention of title provided this right exists in the legislation of the respective country. Otherwise corresponding agreements shall have to be made.
- The same applies to deliveries outside the scope of these Terms, provided retention of title or extended retention of title is legally possible in the country in which the goods are located at the time of enforcement. Otherwise Purchaser undertakes to provide Supplier with all rights stipulated under the legislation of Supplier's country to protect claims.

## VII. Liability for defects / product liability

- Defects must be notified in writing without delay and at the latest two weeks after receipt of the shipment. In the case of hidden defects, this period is extended to one week after they have been detected but no more than six months after receipt of the goods.
- In the case of justified claims Supplier is obliged, at its discretion, to remedy the defect or supply a replacement free of charge. Should Supplier fail to meet this obligation within a reasonable period of time, Purchaser is entitled to a reduction in the purchase price or rescission of the contract. Any further claims shall be excluded. Defective parts that have been replaced shall at the request of Supplier be returned at its expense.
- This shall be without prejudice to the liability arising from national product liability laws.

## VIII. Terms of payment

- All payments shall be made in the agreed currency exclusively to Supplier according to the agreed payment terms.
- Should justified doubts arise as to Purchaser's ability to pay, all claims by Supplier shall fall due immediately. In addition Supplier is entitled to withdraw from the contract or demand compensation for non-performance following a reasonable period.
- In the event of delayed payment, default interest will be payable at a rate of five per cent (5%) without a reminder.

## IX. Property rights

- Purchaser is liable with regard to Supplier for the deliveries and services ordered being free from third-party property rights and exempts Supplier from all related claims and shall be liable for any damages incurred.
- Design documents, models, etc. from Supplier shall remain the property of Supplier and may only be used or passed on with its consent. Should a delivery contract not be fulfilled due to the fault of Purchaser, Supplier is entitled to appropriate compensation for the preliminary work it has carried out.

## X. Place of performance and jurisdiction

- The place of performance is the location of Supplier's factory.
- At the discretion of Supplier, the place of jurisdiction is the location of Supplier's factory or the Purchaser's principle office or registered office.
- The law of the country in which Supplier's factory is located shall apply.



**SCHERER** GmbH / Srl  
Via Max Valier Straße 16  
39040 Tramin / Termeno (BZ)  
ITALIEN / ITALIA  
Phone 0039 0471 860727  
[www.scherer.it](http://www.scherer.it)  
[info@scherer.it](mailto:info@scherer.it)



**LOCKWEILER PLASTIC WERKE** GmbH  
Walther-Nothelfer-Straße 2  
66687 Wadern-Lockweiler  
DEUTSCHLAND  
Phone 0049 (0) 6871-508-0  
[www.lockweiler-werke.com](http://www.lockweiler-werke.com)  
[info@lockweiler-werke.de](mailto:info@lockweiler-werke.de)



**AUTO HEINEN** GmbH  
Heinenstraße 9-15  
53902 Bad Münstereifel  
DEUTSCHLAND  
Phone 0049 (0) 2253-312-0  
[www.autoheinen.de](http://www.autoheinen.de)  
[info@autoheinen.de](mailto:info@autoheinen.de)



**MOULDPLAST** Srl  
Via Marconi 2  
38068 Rovereto (TN)  
ITALIA  
Phone 0039 0464 481711  
[www.mouldplast.eu](http://www.mouldplast.eu)  
[info@mouldplast.eu](mailto:info@mouldplast.eu)



**SCHERER SOFTWARE** GmbH & Co. KG  
Leopoldstraße 59  
80802 München  
DEUTSCHLAND  
Phone 0049 (0) 89 21547197-0  
[www.scherer-software.de](http://www.scherer-software.de)  
[info@scherer-software.de](mailto:info@scherer-software.de)



**WEZ KUNSTSTOFFWERK** AG  
Industriestrasse 8  
5036 Oberentfelden  
SCHWEIZ  
Phone 0041 (0) 62 7378800  
[www.wez.ch](http://www.wez.ch)  
[info@wez.ch](mailto:info@wez.ch)



**TOOD** Srl  
Via ai Pini 11  
36034 Malo (VI)  
ITALIA  
Phone 0039 0445 580908  
[www.tood.it](http://www.tood.it)  
[info@tood.it](mailto:info@tood.it)