



## COMBI Junction Boxes

Installation material for the electrical market

## The COMBI series at a glance

Clever. Useful. Strong.

**For extreme conditions, indoors and out**

Strong thermoplastic housing made from two separate plastic components

**Quick and secure closing**

Rust-free captive quick-release fasteners: close and seal the box with just a quarter turn

**Protection against moisture and dust**

High protection class of IP 66 / 67

**Unique design**

Ribbed corners and the unique WISKA bellied cover

**Quick installation**

Combined threaded and membrane entries for installation without tools or locknuts



**More installation space**

Bellied cover allows 10 % more space

### The COMBI family by WISKA



Model	Dimensions
COMBI 108	76 x 76 x 51 mm
COMBI 308	85 x 85 x 51 mm
<b>COMBI 407</b>	<b>95 x 95 x 60 mm</b> <b>NEW</b>
COMBI 607	110 x 110 x 66 mm
COMBI 1010	140 x 140 x 82 mm
COMBI 1210	160 x 140 x 81 mm

## Advantages of the COMBI series

The COMBI series by WISKA offers outstanding properties and a comprehensive range of accessories for the widest range of applications. COMBI junction boxes are

used in commercial, industrial and domestic applications, such as railway, shipping and offshore industries.

Clever.

Useful.

Strong.

### Cable entry



Clean and easy installation with membrane cable entries on the rear of the box



Quick cable gland installation with a combination of threaded membrane entries

### Terminals

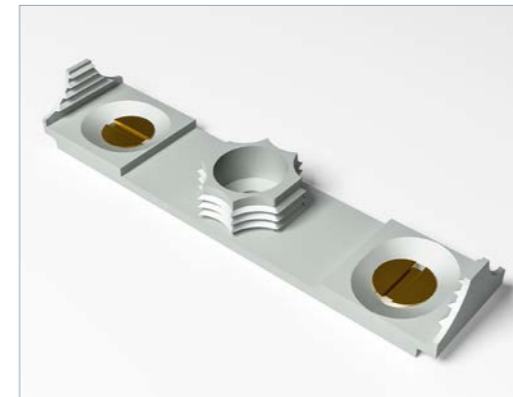


Easier installation due to terminal block capable of being fixed in different positions. Possibility of usage of terminal blocks for mounting with a DIN RAIL

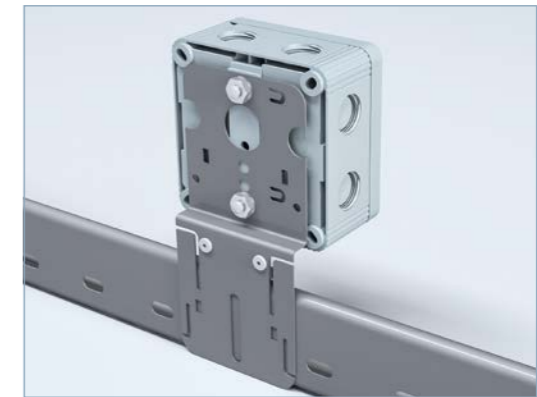


Screwless terminals for fast installation and maintenance free applications

### Mounting



Mounting clip for easy installation



Versatile installation with mounting plate for fastening to cable trays

### Use under toughest conditions

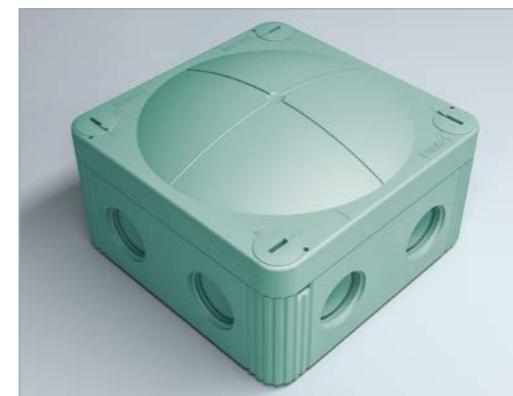


Two-component silicone gel to achieve the high protection class of IP 68 when used under water and underground



IP 68 SET with innovative sealing technique for long life even for permanent use under water

### Accessories



COMBI MAR for use in the challenging maritime environment and other special applications



Earthing plates for the use of earth continuity of SWA cable with BW / CW cable glands

## For the highest demands, indoors and out

WISKA's tried and tested COMBI junction boxes meet the most challenging customer requirements. They combine the highest plastics expertise with a unique design and are suitable for indoor as well as outdoor use.

Properties	
High stability	Resistance to fats, mineral oil, diesel, weak acids, strong alkalis and alcohol
For extreme conditions	Impact-resistant, shatter-proof, weather- and UV-resistant, flame-retardant and halogen-free
Mounting	Mounting clips or internal openings outside the sealing area
Colours	Available in various colours, depending on the model: light grey, black, white, grey with red cover
Customized productions	available on request

Specifications COMBI	108	308	407	607	1010	1210
Protection class	IP 66	IP 66 / 67	IP 66 / 67	IP 66 / 67	IP 66 / 67	IP 66 / 67
Glow wire test	750 °C					
Operating temperature	-30 °C - 100 °C					
Installation temperature	-5 °C - 60 °C					
Voltage	400 V	400 V	690 V	690 V	690 V	690 V
Max. power – Screw terminal	32 A	32 A	32 A	41 A	57 A	57 A
Max. power – Push-in terminal (SDK)	24 A	24 A	24 A	–	–	–
Dimensions	76 x	85 x	95 x	110 x	140 x	160 x
	76 x	85 x	95 x	110 x	140 x	140 x
	51 mm	51 mm	60 mm	66 mm	82 mm	81 mm
Material	Polypropylene, glass-fibre reinforced; seal made of thermoplastic elastomer					
Specifications COMBI MAR	108	308	407	607	1010	1210
Glow wire test	960 °C					
Material	V0, Polypropylene, glass-fibre reinforced; seal made of thermoplastic elastomer					



## About WISKA

WISKA is one of the leading manufacturers of electrical equipment for trade, industry and shipbuilding, as well as maritime lighting products and CCTV camera surveillance. Our junction boxes and cable glands are in use around the globe and are characterised by flexible applications in various industrial sectors as well as the highest quality standards. Founded in Hamburg in 1919, the first plastic cable glands were produced as early as the mid-1920s. Since then, WISKA has become an expert partner for high-quality plastic products with its own injection moulding manufacture. Today, the family-owned company employs over 230 people worldwide. WISKA operates its own research and development facilities and production plants at its headquarters in Germany and has a global network of representatives and subsidiaries who ensure a quick and effective on-site customer service.

### COMBI Order Numbers



Type	COMBI	COMBI	COMBI	COMBI MAR
	WISKA-No. RAL 7035	WISKA-No. RAL 9005	WISKA-No. RAL 9001	WISKA-No. RAL 6027
COMBI 108	10060522	10061999	10060622	10106157
COMBI 108/5	10060523	10061998	10060623	10106163
COMBI 308	10060400	10060581	10060610	10106158
COMBI 308/5	10060401	10060580	10060611	10106164
COMBI 407	10105595	10105601	10105598	10106159
COMBI 407/5	10105596	10105602	10105599	10106165
COMBI 407/SDK	10105597	10105603	10105600	-
COMBI 407/SDKF	10106191	10106192	10106193	-
COMBI 607	10060531	10060648	10060533	10106160
COMBI 607/5	10060532	10060538	10060534	10106166
COMBI 1010	10060702	10062214	10062210	10106161
COMBI 1010/5	10060703	10062215	10062211	10106167
COMBI 1210	10101459	10101460	10101461	10106162
COMBI 1210/5	10101462	10101463	10101464	10106168

Key: /5 = with 5-pole terminal block  
/SDK = with screwless 5-pole terminal block for solid and stranded wires  
/SDKF = with screwless 5-pole terminal block for solid, stranded and flexible wires



### WISKA Hoppmann & Mulsow GmbH

Kisdorfer Weg 28  
24568 Kaltenkirchen  
Germany

 +49-4191-508-0  
 +49-4191-508-129

contact@wiska.com  
www.wiska.com