

ESD SPECIAL TOOLS, MATS AND ACCESSORIES



9-342 Contact bracelet with spiral cord

adjustable elastical bracelet with woven silvered synthetic fibres, allergy-free, with 3 mm press-stud; high elastical spiral cord, 2400 mm long, 2 x 1 Mohm safety resistor, press-studs 3 mm for bracelet and 10 mm for earth wire; additionally insulated crocodile clip No. 9-353. (Weight: 60 g)



9-342

9-342-1 Contact bracelet

adjustable, elastic contact bracelet with woven silvered synthetic fibres, allergy-free, with 3 mm press-stud (Weight: 13 g)



9-342-1

9-342-2 Spiral cord

Highly elastic spiral cord, 2400 mm long, 2x1 Mohm safety resistor, press-studs 3 mm for bracelet and 10 mm for earth wire (Weight: 25 g)



9-342-2

9-343 Earth wire

with 1 Mohm safety resistor, 1500 mm long, with 2 press-studs 10/10 mm, for connecting workbench pad and floor cover and connection to an earth potential; additionally insulated crocodile clip No. 9-353. (Weight: 40 g)



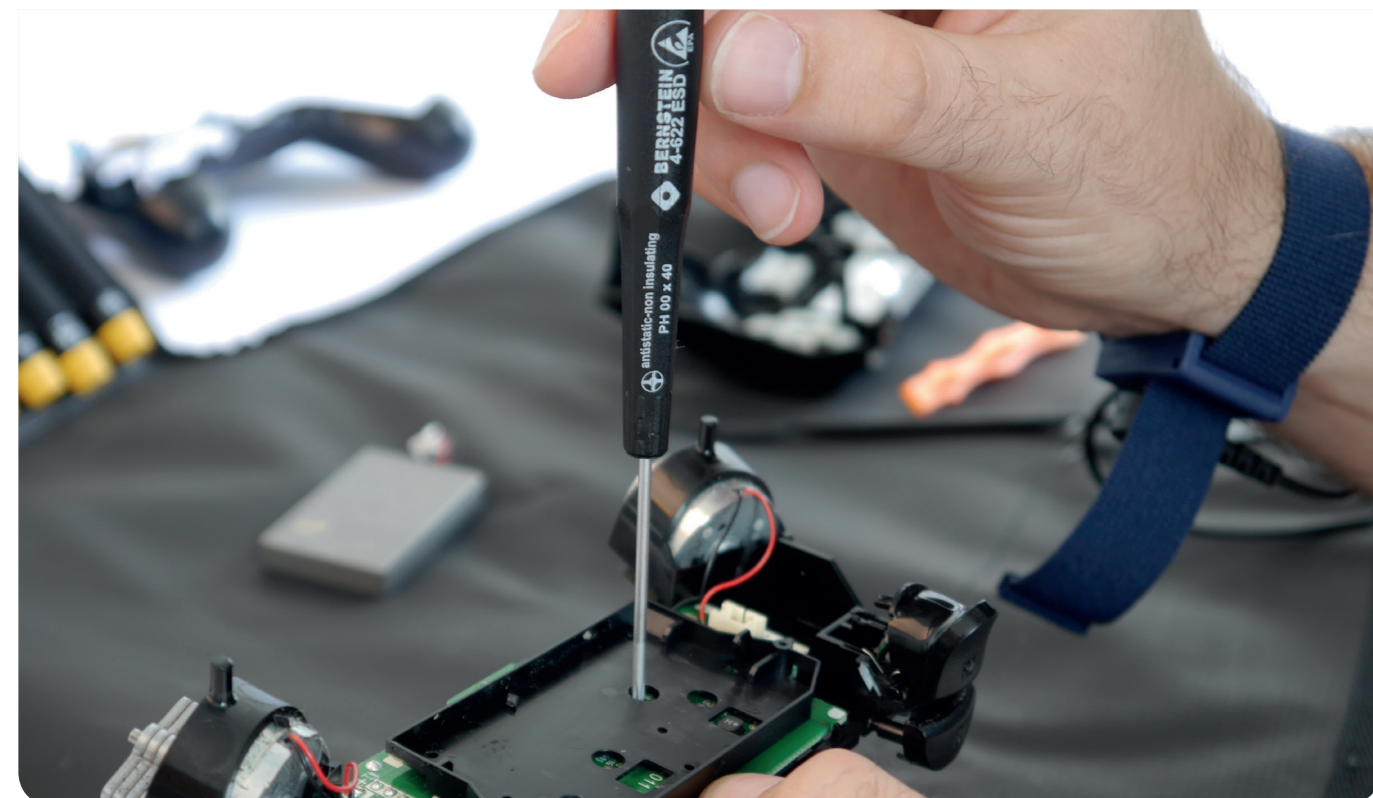
9-343



9-353

9-353 Crocodile clip

insulated crocodile clip with banana plug connection and 10 mm press-stud (Weight: 18 g)



9-354 5 pcs. ESD-handling set

consisting of: foldable workbench pad (No. 9-354-10), 500 x 400 x 0.5 mm, black, dissipative (leakage resistance to DIN IEC 61340-4-1 RS: approx. 10⁹ Ohm), with 2 press-studs, adjustable and elastic contact bracelet (No. 9-342-1) with press-stud, highly elastic spiral cable (No. 9-342-2) with two press-studs, 2400 mm, earth wire with 2 press-studs, 1500 mm, insulated crocodile clip with banana plug and press-stud (No. 9-343). (Weight: 170 g)



9-354

9-359 Earth wire with dummy Schuko-plug

spiral cord 2400 mm long, 1 Mohm safety resistance, one side press-stud 10 mm, other side dummy Schuko-plug. (Weight: 50g)



9-359

9-360 ESD-handling set

consisting of: workbench pad, resistant to soldering tin, 900 x 610 x 1.5 mm, black, from homogeneous, electrically dissipative synthetic caoutchouc, slightly grained surface, (leakage resistance to DIN IEC 61340-4-1 RA: 103 - 106 ohm), with 2 press-studs 10/10 mm; contact bracelet No. 9-342-1, spiral cord 9-342-2 and earth wire No. 9-343 including crocodile clip No. 9-353. (Weight: 1160 g)



9-360

9-361 ESD-handling set

consisting of: workbench pad, resistant to soldering tin, 900 x 610 x 2.0 mm platinum grey, from dissipative synthetic caoutchouc, slightly grained, with homogeneous, electrically dissipative black rear, (leakage resistance to DIN IEC 61340-4-1 RA: 105 - 107 ohm), with 2 press-studs 10/10 mm; contact bracelet No. 9-342-1, spiral cord No. 9-342-2 and earth wire No. 9-343 including crocodile clip No. 9-353. (Weight: 1300 g)



9-361

9-367 ESD-Set

Pad 610x450 x 2.0 mm especially for CPU (central processing units), printer, scanner consisting of: workbench pad with one press-stud 10mm for the grounding connection; earth wire with dummy Schuko-plug No. 9-359 (Weight: 930g)

9-321-VE10

ESD SMD flip box only available in sets of 10

16 x 12 x 15mm (internal dimensions)



9-321

9-322-VE10

ESD SMD flip box only available in sets of 10

37 x 12 x 15mm (internal dimensions)



9-322

9-323-VE10

ESD SMD flip box only available in sets of 10

41 x 37 x 15mm (internal dimensions)

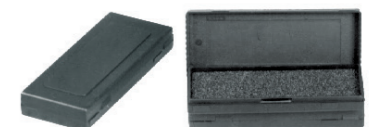


9-323

9-316-VE5

ESD SMD flip box only available in sets of 10

118 x 32 x 14 mm (internal dimensions)

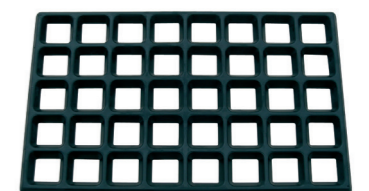


9-316

9-334 Assembly grid mat

Sturdy supporting mat which prevents damage of components by e.g. screws and the loss of small parts.

Dimensions: 610 x 370 x 20 mm
Cell dimensions: 50 x 45 mm
Resistance to ground: 10³ - 10⁴ Ohm
Colour: Black
(Weight: 3200 g)



9-334