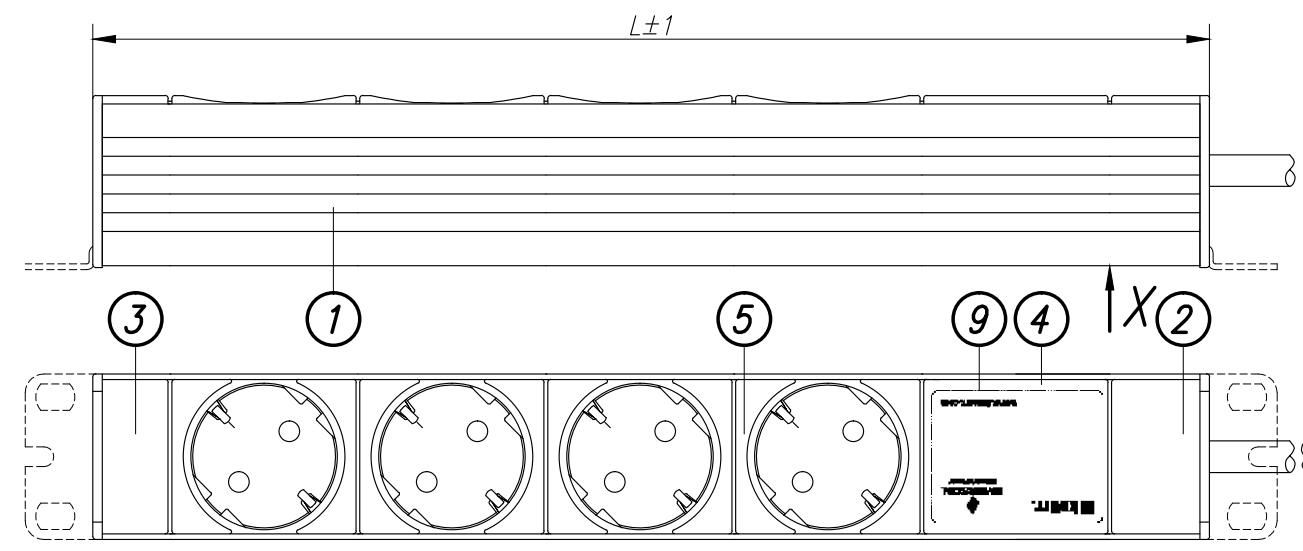


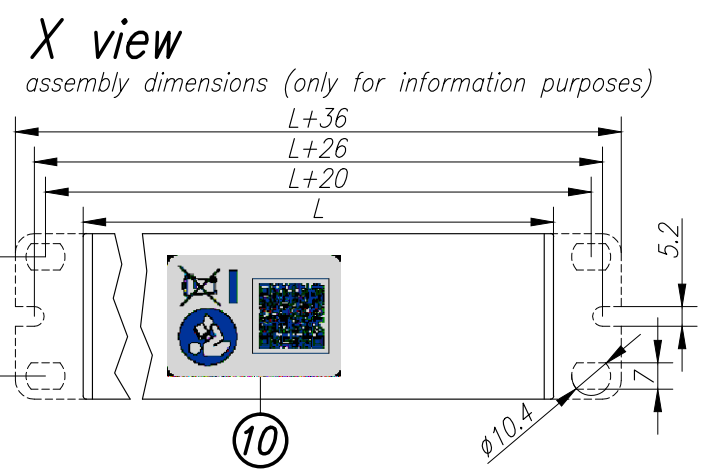
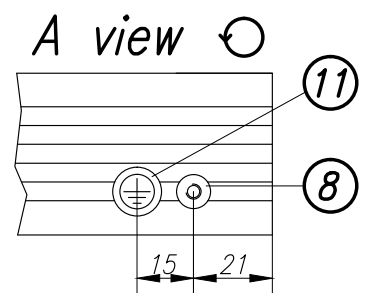
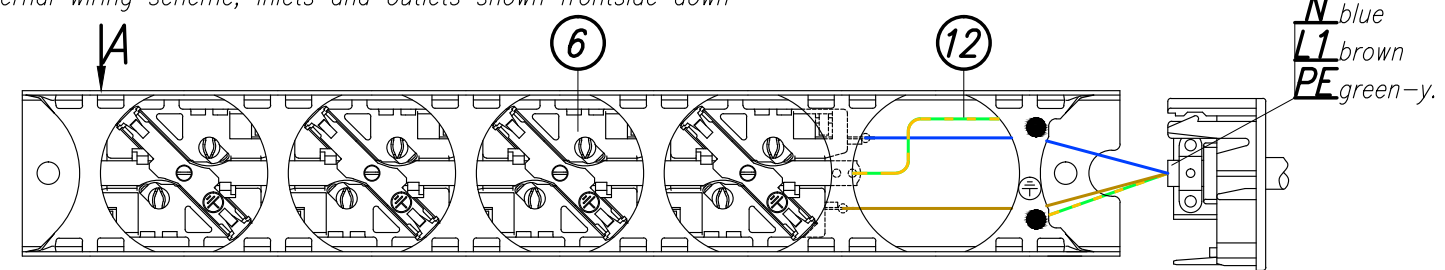
Disclosure and photocopying of this document, exploitation and communication of its contents are not permitted, unless permission is expressly granted. All rights are reserved.

DI-STIRP

Weitergabe sowie Vervielfältigung dieser Unterlage, Verwertung und Mitteilung ihres Inhalts nicht gestattet, soweit nicht ausdrücklich zugestanden. Alle Rechte vorbehalten.



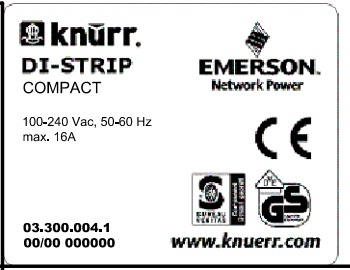
Internal wiring scheme, inlets and outlets shown frontside down



Type selection

Drawing no.	L	Color of chassis	No. of sockets	Gross weight	Net weight	External dimensions of packing box
03.300.015.6	847	RAL2003 pastel orange	15	1,7 kg	1,47 kg	985x60x75 mm
03.300.015.1	847	RAL7035 light grey	15	1,7 kg	1,47 kg	985x60x75 mm
03.300.011.6	647	RAL2003 pastel orange	11	1,37 kg	1,19 kg	680x60x75 mm
03.300.011.1	647	RAL7035 light grey	11	1,37 kg	1,19 kg	680x60x75 mm
03.300.007.6	447	RAL2003 pastel orange	7	1,06 kg	0,91 kg	480x60x80 mm
03.300.007.4	447	RAL5018 turquoise blue	7	1,06 kg	0,91 kg	480x60x80 mm
03.300.007.1	447	RAL7035 light grey	7	1,06 kg	0,91 kg	480x60x80 mm
03.300.004.6	297	RAL2003 pastel orange	4	0,85 kg	0,7 kg	480x60x80 mm
03.300.004.1	297	RAL7035 light grey	4	0,85 kg	0,7 kg	480x60x80 mm

Technical data:
 - 4x DIN 49440 SCHUKO socket 16A
 socket spacing 50mm, torsion of sockets 45°



Load rating:
 100-240 Vac, 50-60 Hz
 Input: 1x 16 A
 Output: 16 A

Approvals/certificates:
 - CE Label in accordance with 2006/95/EC, 2004/108/EC, 2011/65/EU
 - BV BG
 - VDE GS

Power cord:
 Type: H05W-F 3x1,5mm², white
 Length: 2,5m
 Plug: CEE VII/7, DIN49441 Form2

Material/Finish:
 Chassis: closed sheet steel extrusion, zincplated, powder-coated texture
 Plastic parts: Vampamid 6 0024 VO (UL94) or similar, recyclable
 Internal conduction: brass conductor rails and copper wires
 Internal copper wires: H07V-K 1,5mm²

Color:
 Chassis:
 Plastic parts: RAL7035 light grey

Packaging:
 Packing box (csomagolódoboz)
 Supply schedule:
 Socket strip (1 piece)
 Mounting bracket (2 pieces) 3.768.2608
 User manual (1 piece) 03.300.999.1

12	1	ST	Vezeték zöld-sárga 1,5mm ²	Electric cord green-yellow	3.768.2634	L=100(EO-EO)
----	---	----	---------------------------------------	----------------------------	------------	--------------

A belső vezetékvezés komponensei. / Components of internal wiring.

Dimensions in mm				General tolerances	Finish	Material	Sheet
				ISO 2768-m			1/1
				Date	Name	Description	
				Drawn	26.11.2007	Kovács	DI-STIRP D COMPACT
				Checked	26.11.2007	Szabó	
				Approved			
						Drawing no.	Scale
				knürr		03.300.004.X-015.X	
				Gross weight	Net weight	External dimensions of packing box	
				kg	kg	mm	

Platine: File: