

UNIVERSAL SWITCH



ISO - View

revision	zone	date	description		RP - no.
08	-	14.12.2021	product launch		1015
09	-	01.04.2022	drawing revised: product options, product dimensions, circuit diagrams, product label		1050
10	-	01.08.2022	drawing revised: panel cut out: recommended material and geometry added; main materials and weight updated		1073
-	-	-	-		-
-	-	-	-		-
-	-	-	-		-
-	-	-	-		-

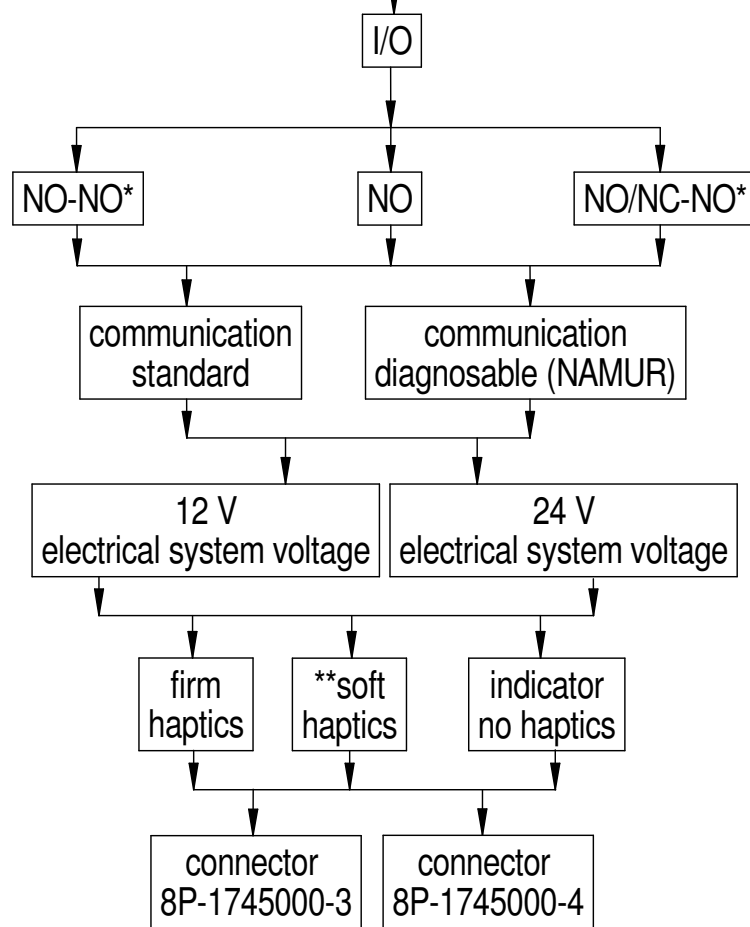
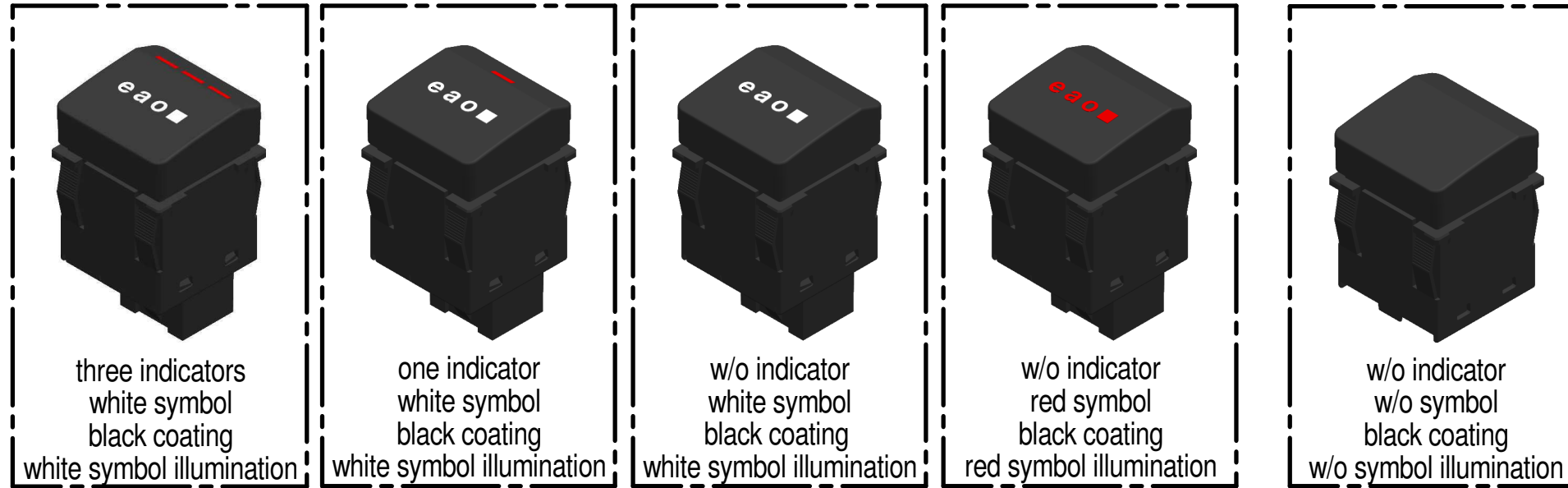
- sheet 1: cover
- sheet 2: product options
- sheet 3: product dimensions
- sheet 4: mounting specifications
- sheet 5: illumination specification
- sheet 6: circuit diagrams - electrical connection
- sheet 7: product labeling, materials

This drawing is a controlled document for EAO Automotive GmbH & Co. KG.
It is subject to change. For the latest revision please ask the responsible EAO sales company.

description				S09 universal switch		drawing no.	1901940001	revision	10
				scale	4 : 1	format	A 3	weight	~ 11 g
EAO Automotive GmbH & Co. KG Richard-Wagner-Straße 3 08209 Auerbach GERMANY				1st angle projection		document type		product information	
						all dimensions are in millimeters [inches]		status	
						preliminary			
						date	01.08.2022	name	EBJ
						drawn	08.08.2022	SCI	sheet no.
						approved			1/7

product options

revision	zone	date	description	RP - no.
08	-	14.12.2021	product launch	1015
09	-	01.04.2022	drawing revised: product options, product dimensions, circuit diagrams, product label	1050
10	-	01.08.2022	drawing revised: panel cut out: recommended material and geometry added; main materials and weight updated	1073
-	-	-	-	-
-	-	-	-	-
-	-	-	-	-



options	electrical	haptics	cap colour	symbol illumination	indicator	connector
I/O	12V	Firm haptic	White symbol / Black Coating	White	1 red indicator	Tyco 8P - 1745000-3 black
I/O NO/NO	24V	Soft haptic	Red symbol / Black Coating	Red	3 red indicators	Tyco 8P - 1745000-4 grey
I/O NO/NC-NO	12V NAMUR Rs=120Ω / Rp=1kΩ	No haptic	White symbol / Black Coating	White	1 red indicator	(w/o)
	24V NAMUR Rs=120Ω / Rp=1kΩ	No haptic	Red symbol / Black Coating	Red	3 red indicators	(w/o)
	12V NO + NO	No haptic	White symbol / Black Coating	White	1 red indicator	(w/o)
	24V NO + NO	No haptic	Red symbol / Black Coating	Red	3 red indicators	(w/o)
	12V NO/NC - NO	No haptic	White symbol / Black Coating	White	1 red indicator	(w/o)
	24V NO/NC - NO	No haptic	Red symbol / Black Coating	Red	3 red indicators	(w/o)
	12V NO + NO NAMUR Rs=120Ω / Rp=1kΩ	Firm haptic	White symbol / Black Coating	White	1 red indicator	(w/o)
	24V NO + NO NAMUR Rs=120Ω / Rp=1kΩ	Soft haptic	Red symbol / Black Coating	Red	3 red indicators	(w/o)
	12V NO/NC - NO NAMUR Rs=120Ω / Rp=1kΩ	No haptic	White symbol / Black Coating	White	1 red indicator	(w/o)
	24V NO/NC - NO NAMUR Rs=120Ω / Rp=1kΩ	No haptic	Red symbol / Black Coating	Red	3 red indicators	(w/o)

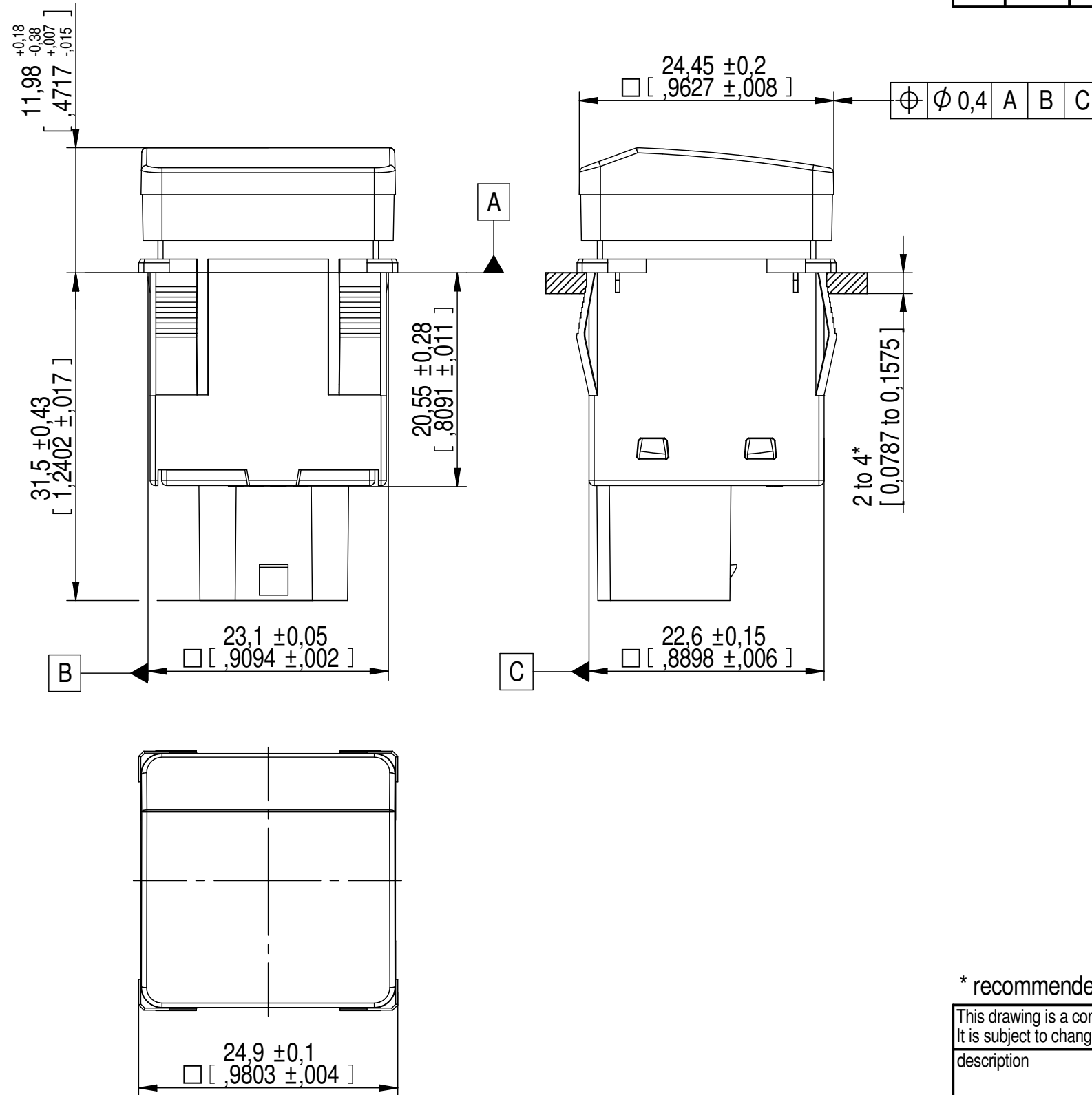
This drawing is a controlled document for EAO Automotive GmbH & Co. KG. It is subject to change. For the latest revision please ask the responsible EAO sales company.

description				S09 universal switch		drawing no.	1901940001	revision	10
				scale	1:1	format	A3	weight	~ 11 g
EAO Automotive GmbH & Co. KG Richard-Wagner-Straße 3 08209 Auerbach GERMANY				document type	product information		status		
				1st angle projection		all dimensions are in millimeters [inches]		preliminary	
				date	01.08.2022	name	EBJ	sheet no.	
				drawn	08.08.2022	approved	SCI	2/7	

* not available in combination with "indicator no haptics"
 ** not available in combination with "NO/NC-NO"

product dimensions

revision	zone	date	description	RP - no.
08	-	14.12.2021	product launch	1015
09	-	01.04.2022	drawing revised: product options, product dimensions, circuit diagrams, product label	1050
10	-	01.08.2022	drawing revised: panel cut out: recommended material and geometry added; main materials and weight updated	1073
-	-	-	-	-
-	-	-	-	-
-	-	-	-	-
-	-	-	-	-



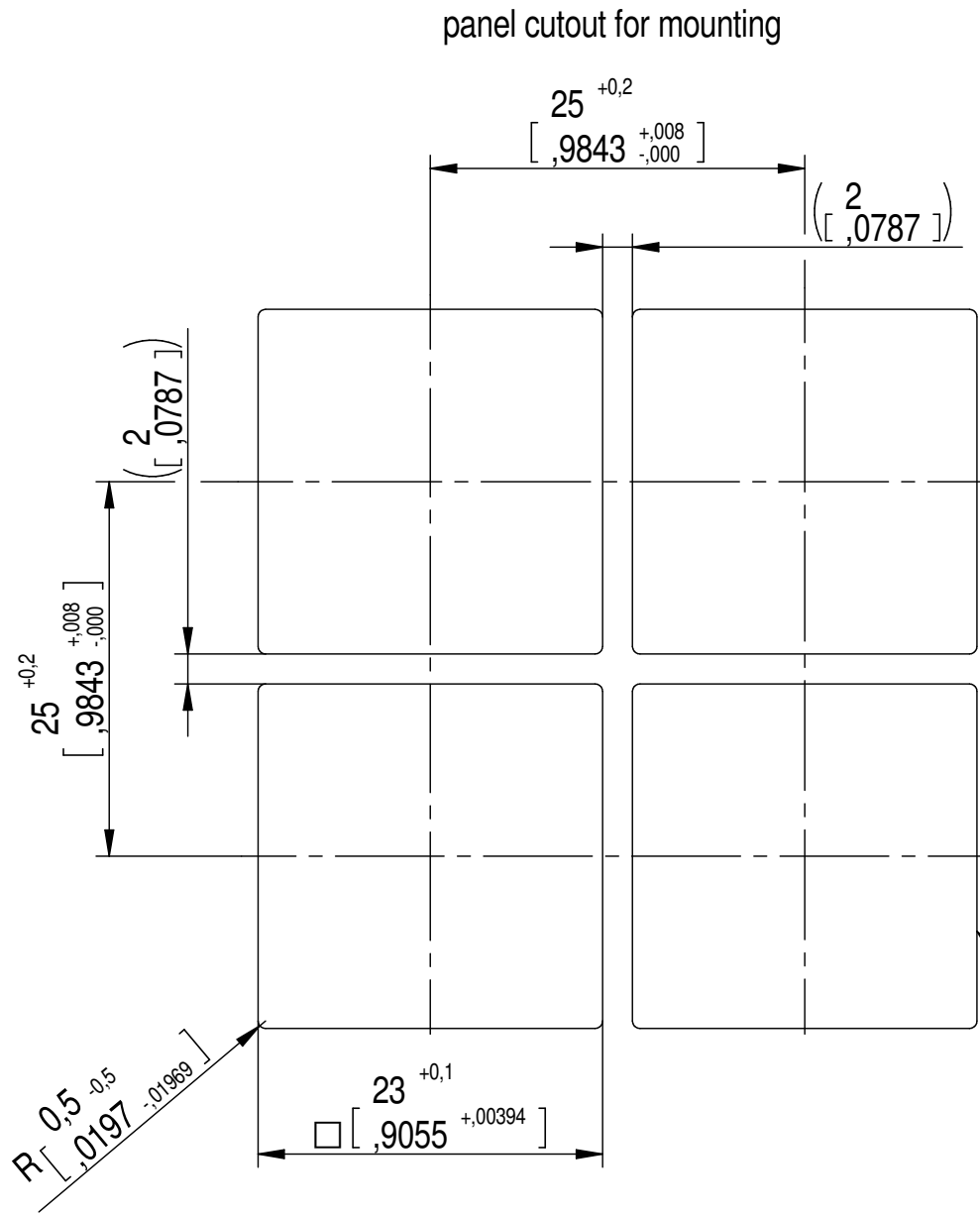
* recommended panel thickness 3 mm (0,1181 in) - 4 mm (0,1575 in)

This drawing is a controlled document for EAO Automotive GmbH & Co. KG.
It is subject to change. For the latest revision please ask the responsible EAO sales company.

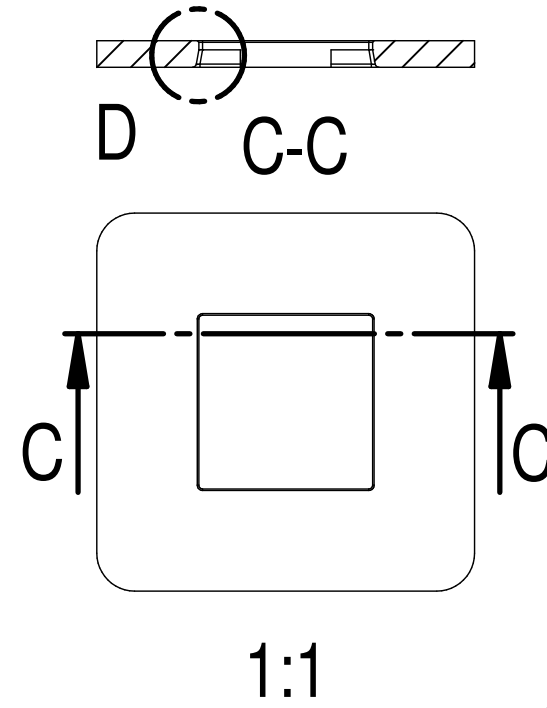
description				S09 universal switch		drawing no.	1901940001	revision	10
				scale	2:1	format	A3	weight	~ 11 g
EAO Automotive GmbH & Co. KG Richard-Wagner-Straße 3 08209 Auerbach GERMANY				document type	product information		status		
1st angle projection				all dimensions are in millimeters [inches]		preliminary			
				date	01.08.2022	name	EBJ	sheet no.	
approved				08.08.2022	SCI	3/7			

mounting specifications

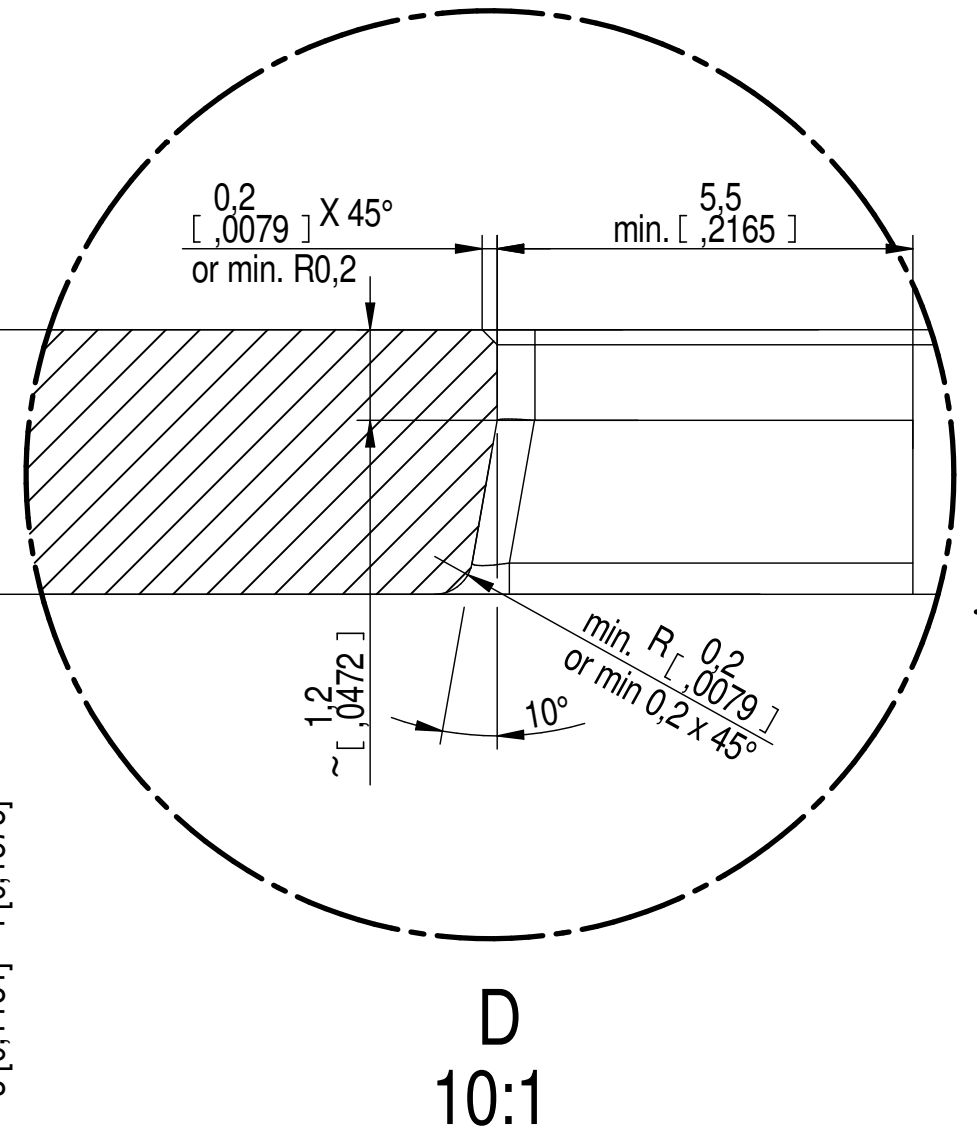
revision	zone	date	description	RP - no.
08	-	14.12.2021	product launch	1015
09	-	01.04.2022	drawing revised: product options, product dimensions, circuit diagrams, product label	1050
10	-	01.08.2022	drawing revised: panel cut out: recommended material and geometry added; main materials and weight updated	1073
-	-	-	-	-
-	-	-	-	-
-	-	-	-	-
-	-	-	-	-



-0,5 [-0,0197]
-0,2 [-0,0079]
on both sides of the cut out



recommended mounting geometry



recommended panel material: PC+ABS or PBT-GF 30

Note:

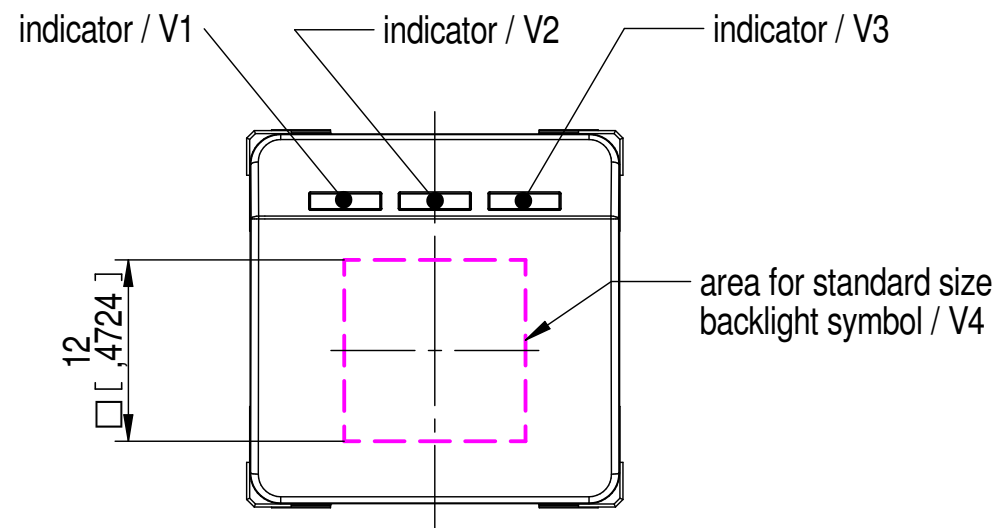
- the view shows the minimal possible distance between the cut outs for two universal push buttons
- an other option for mounting is the radio frame slot for a DIN ISO 7736 slot

This drawing is a controlled document for EAO Automotive GmbH & Co. KG. It is subject to change. For the latest revision please ask the responsible EAO sales company.

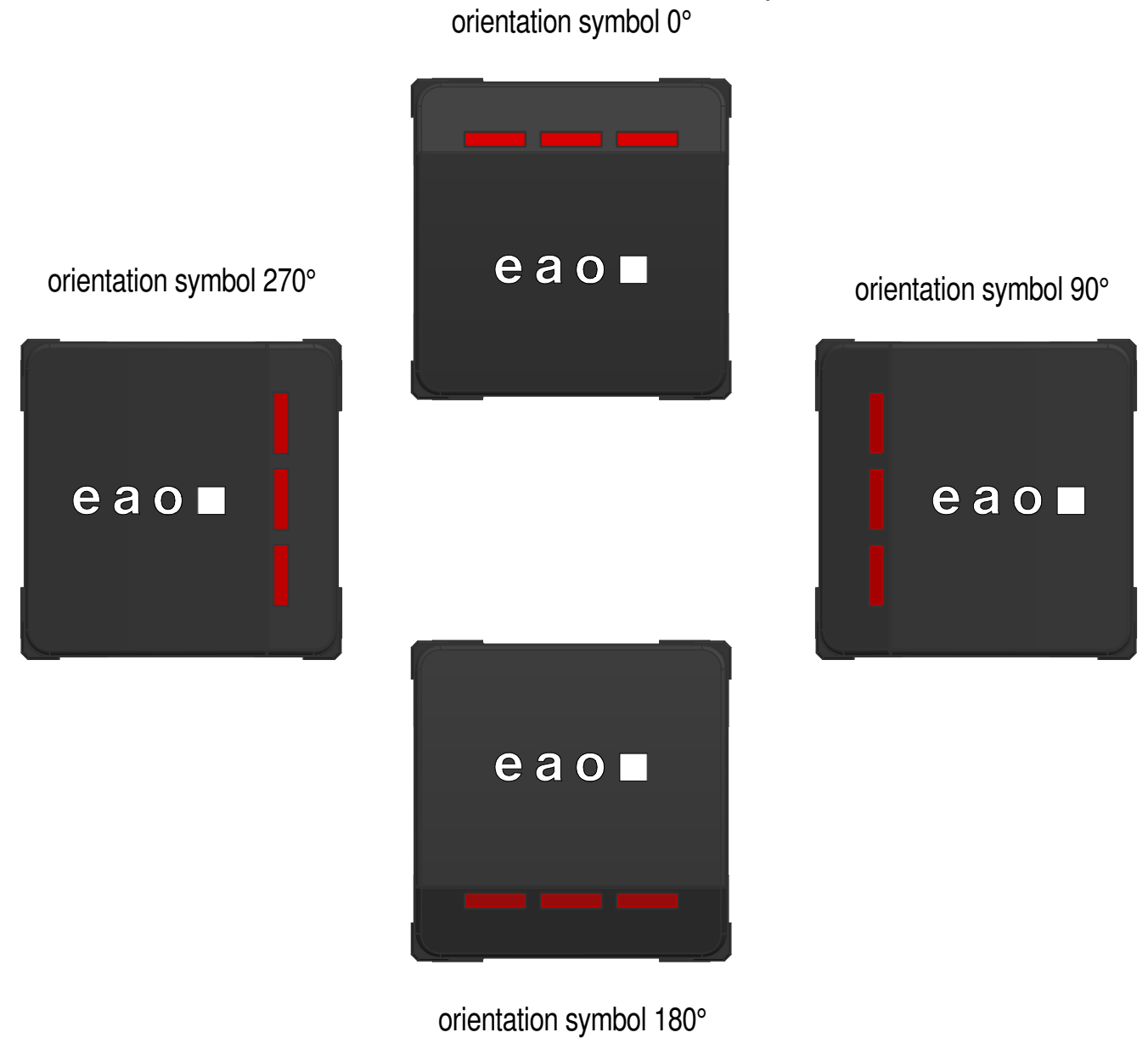
description				drawing no.	revision
S09 universal switch				1901940001	10
eao EAO Automotive GmbH & Co. KG Richard-Wagner-Straße 3 08209 Auerbach GERMANY	scale	format	weight	status	
	2:1	A3	~ 11 g	preliminary	
1st angle projection	all dimensions are in millimeters [inches]			date	name
				drawn	sheet no.
				approved	4/7

illumination specification

revision	zone	date	description		RP - no.
08	-	14.12.2021	product launch		1015
09	-	01.04.2022	drawing revised: product options, product dimensions, circuit diagrams, product label		1050
10	-	01.08.2022	drawing revised: panel cut out: recommended material and geometry added; main materials and weight updated		1073
-	-	-	-		-
-	-	-	-		-
-	-	-	-		-
-	-	-	-		-



standard orientations of the symbol

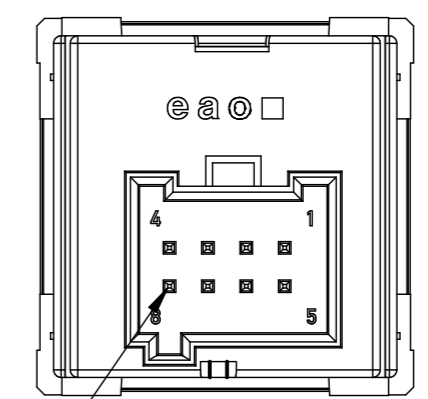
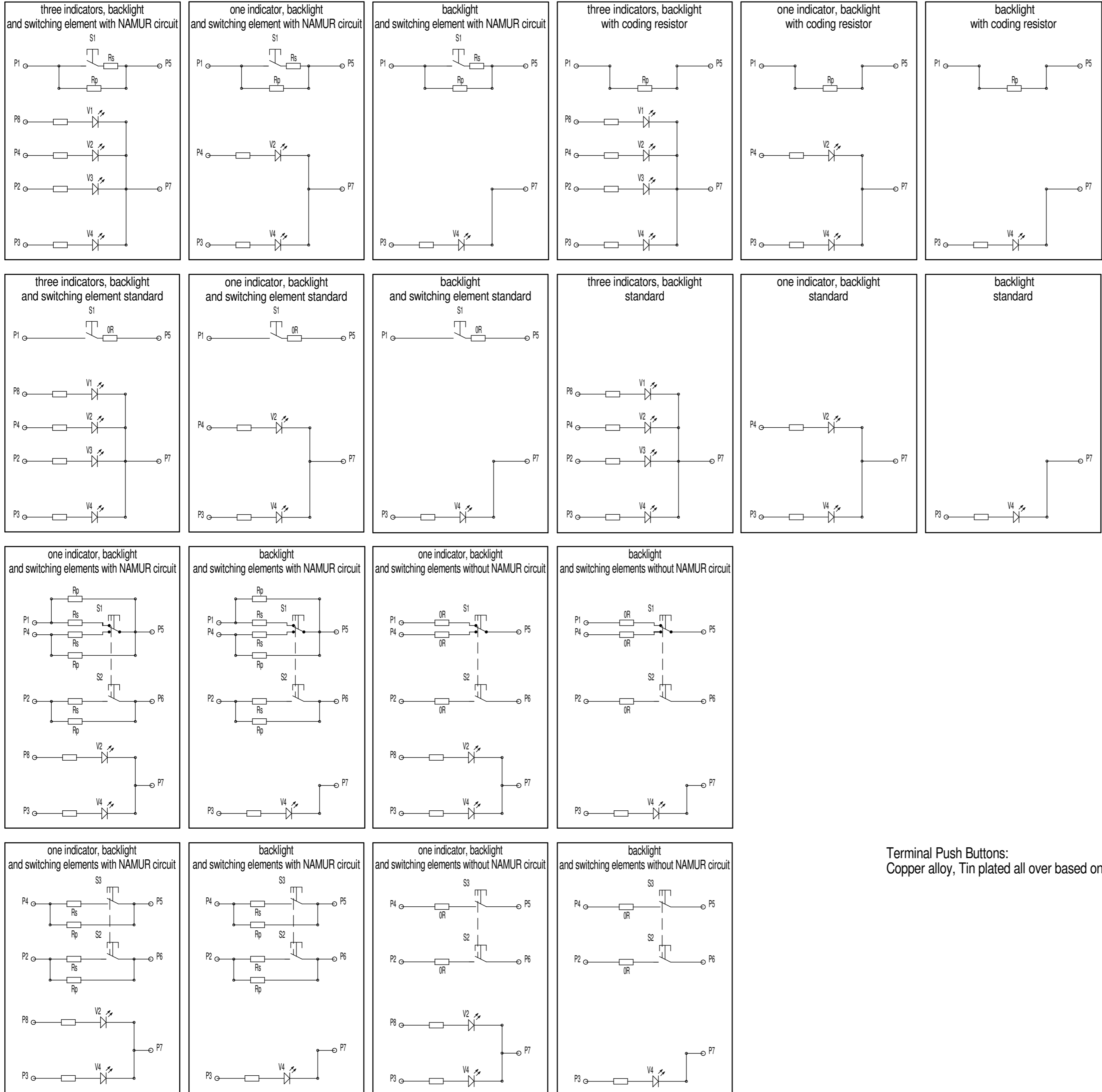


This drawing is a controlled document for EAO Automotive GmbH & Co. KG.
It is subject to change. For the latest revision please ask the responsible EAO sales company.

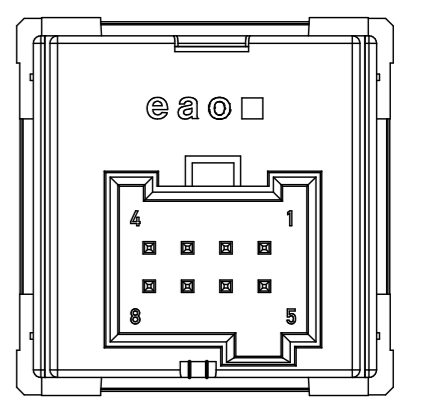
description				S09 universal switch		drawing no.	1901940001	revision	10
eao				scale	2:1	format	A3	weight	~ 11 g
EAO Automotive GmbH & Co. KG Richard-Wagner-Straße 3 08209 Auerbach GERMANY				document type	product information		status preliminary		
1st angle projection				all dimensions are in millimeters [inches]		date	01.08.2022	name	EBJ
				drawn	08.08.2022	approved	SCI	sheet no.	5/7

circuit diagrams - electrical connection

revision	zone	date	description	RP - no.
08	-	14.12.2021	product launch	1015
09	-	01.04.2022	drawing revised: product options, product dimensions, circuit diagrams, product label	1050
10	-	01.08.2022	drawing revised: panel cut out: recommended material and geometry added; main materials and weight updated	1073
-	-	-	-	-
-	-	-	-	-
-	-	-	-	-



connector black
8P - 1745000-3



connector grey
8P - 1745000-4

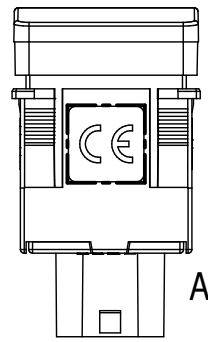
Terminal Push Buttons:
Copper alloy, Tin plated all over based on Nickel

mating connectors:
housing: 1745000-3, 1745000-4
cage: 965601-2
contacts:
- 5-963715-1 (0,5 - 0,75 mm²)
- 5-928999-1 (0,25 - 0,35 mm²)

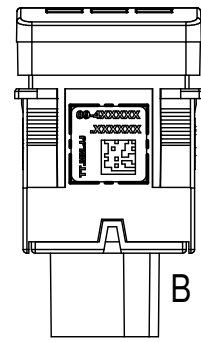
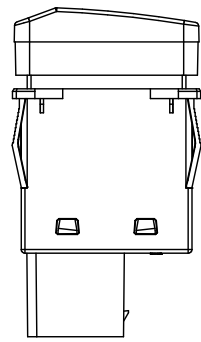
This drawing is a controlled document for EAO Automotive GmbH & Co. KG. It is subject to change. For the latest revision please ask the responsible EAO sales company.				drawing no. 1901940001		revision 10	
description S09 universal switch				status preliminary		sheet no. 6/7	
eao EAO Automotive GmbH & Co. KG Richard-Wagner-Straße 3 08209 Auerbach GERMANY		scale 2:1	format A2	weight ~ 11 g	document type product information	date 01.08.2022	name EBJ
1st angle projection		all dimensions are in millimeters [inches]		approved 08.08.2022	name SCI	sheet no. 6/7	

product labeling, materials

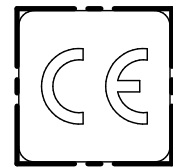
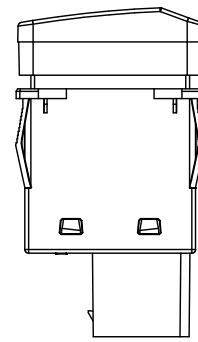
revision	zone	date	description	RP - no.
08	-	14.12.2021	product launch	1015
09	-	01.04.2022	drawing revised: product options, product dimensions, circuit diagrams, product label	1050
10	-	01.08.2022	drawing revised: panel cut out: recommended material and geometry added; main materials and weight updated	1073
-	-	-	-	-
-	-	-	-	-
-	-	-	-	-
-	-	-	-	-



A



B

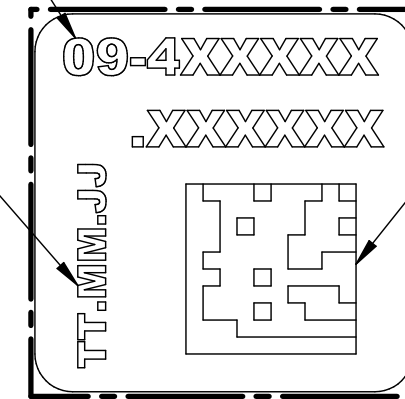


label CE
detail A
2:1

part number

production date


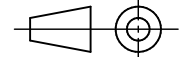
2D code



product label
detail B
5:1

main materials	
PBT-GF30	~ 43 %
POM	~ 19 %
PC	~ 18 %
FR4	~ 14 %
Silicone	~ 4 %
others	< 2 %
percentage may differ depending on variant	

This drawing is a controlled document for EAO Automotive GmbH & Co. KG.
It is subject to change. For the latest revision please ask the responsible EAO sales company.

description				S09 universal switch		drawing no.	revision
						1901940001	10
eao  EAO Automotive GmbH & Co. KG Richard-Wagner-Straße 3 08209 Auerbach GERMANY	scale	format	weight	document type	status		
	1:1	A 3	~ 11 g	product information	preliminary		
1st angle projection		all dimensions are in millimeters [inches]		date	name	sheet no.	
				drawn	01.08.2022	EBJ	7/7
				approved	08.08.2022	SCI	