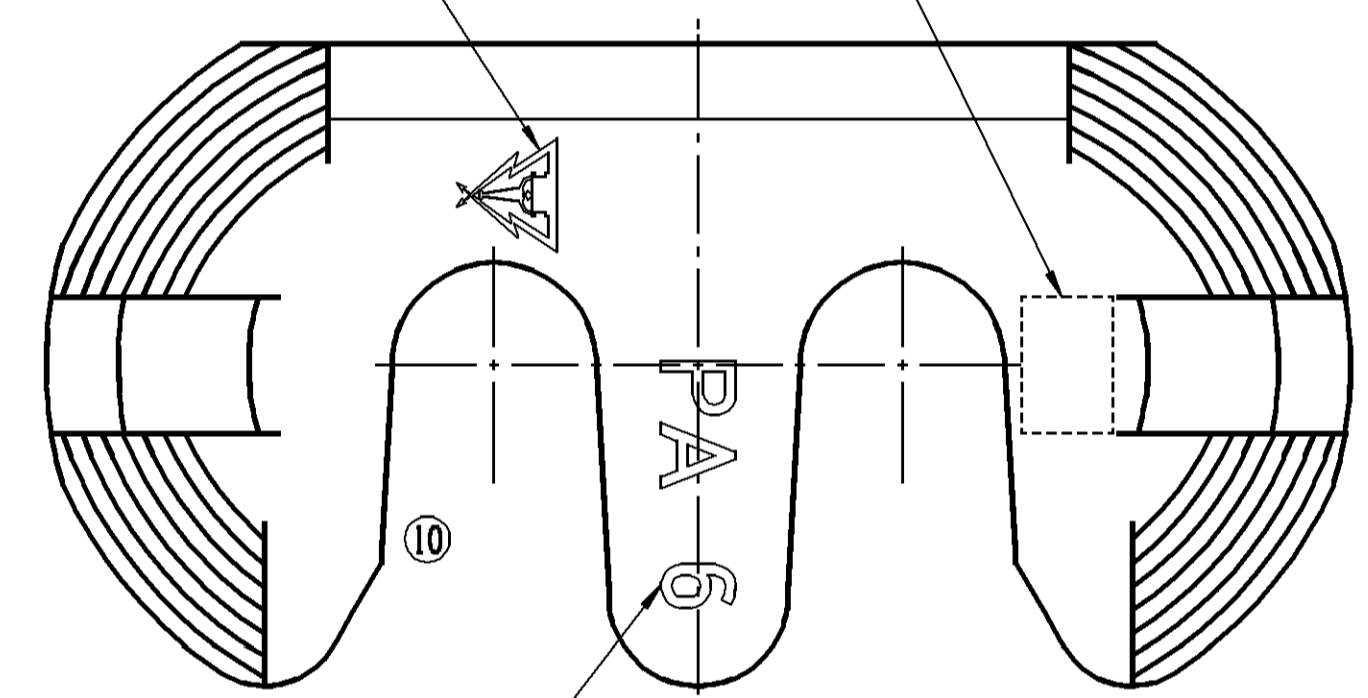
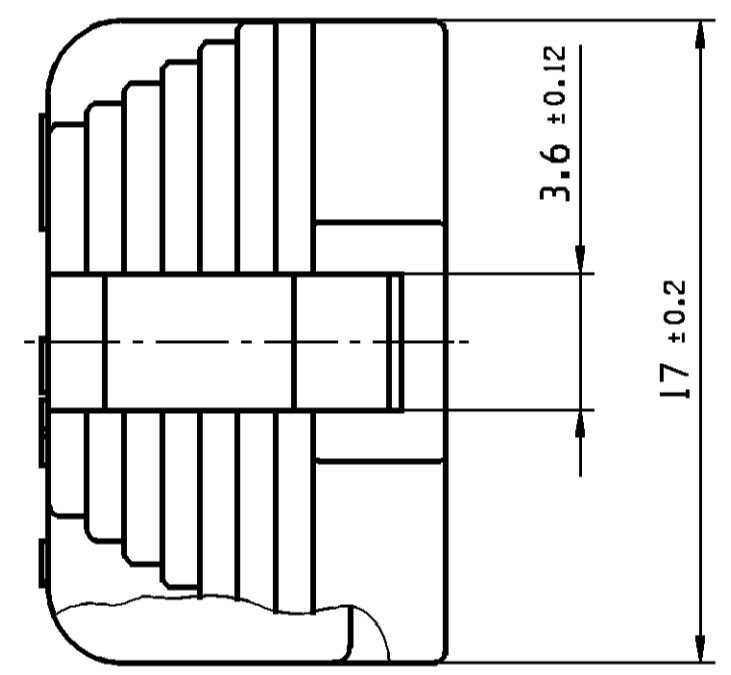
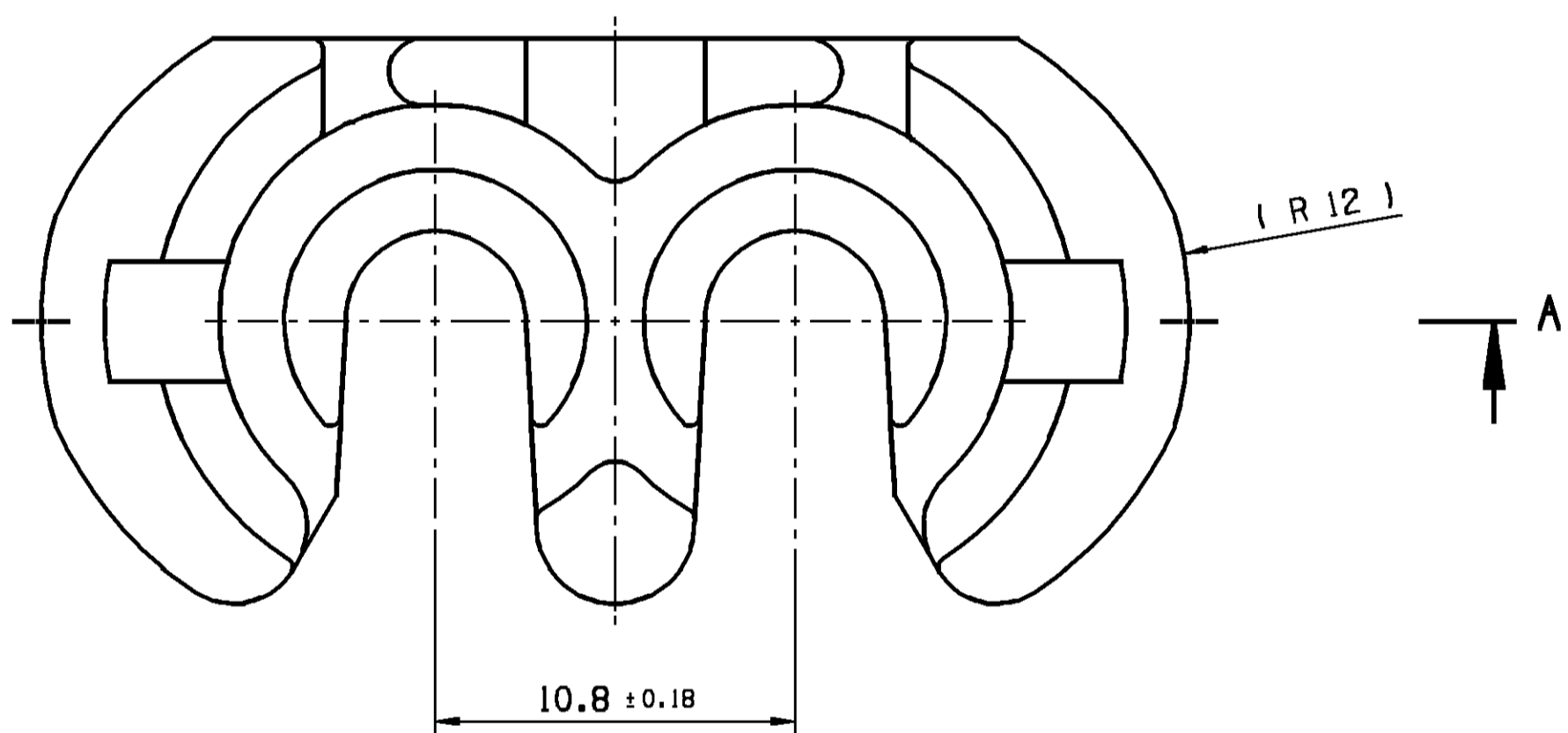
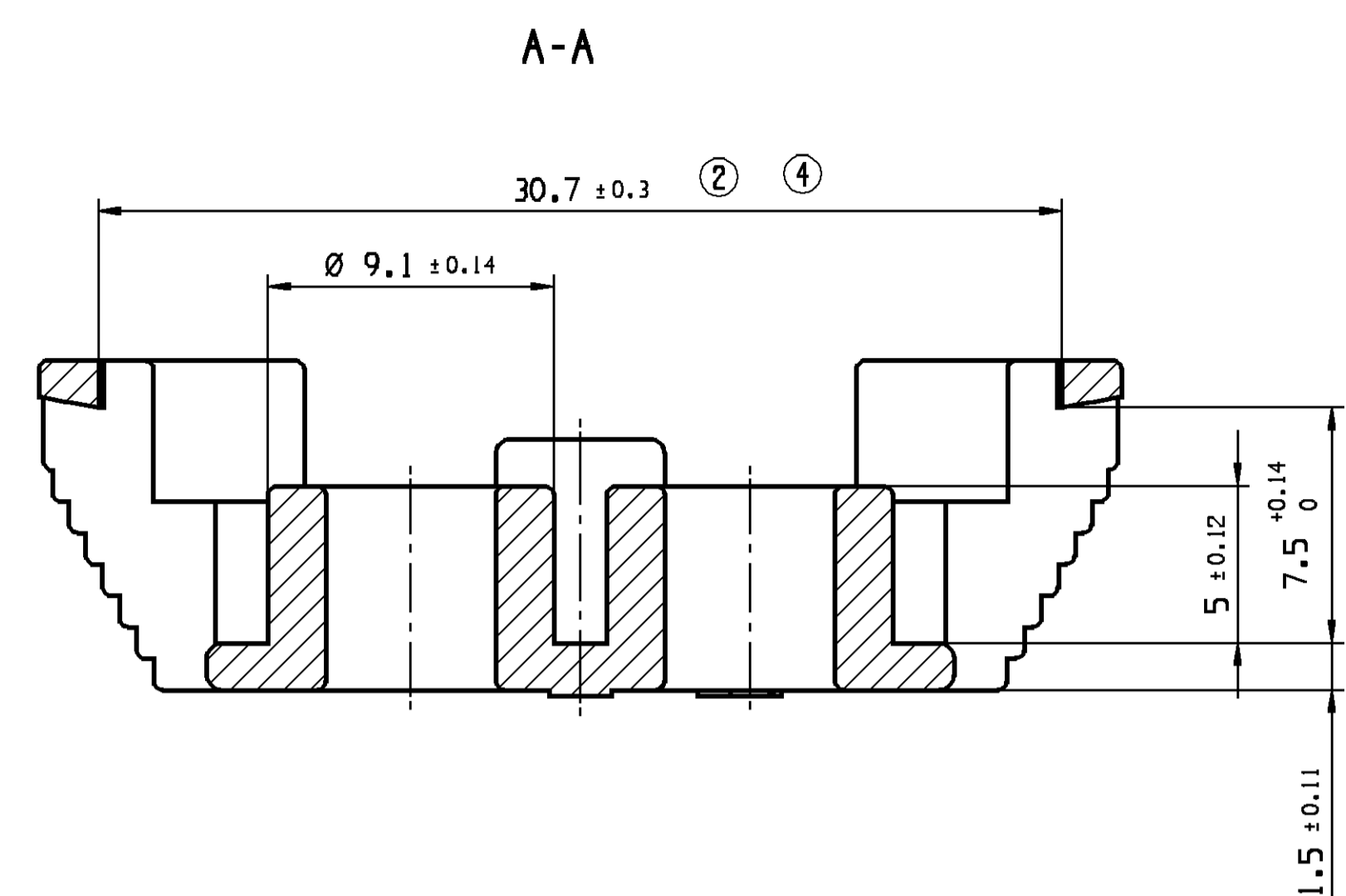


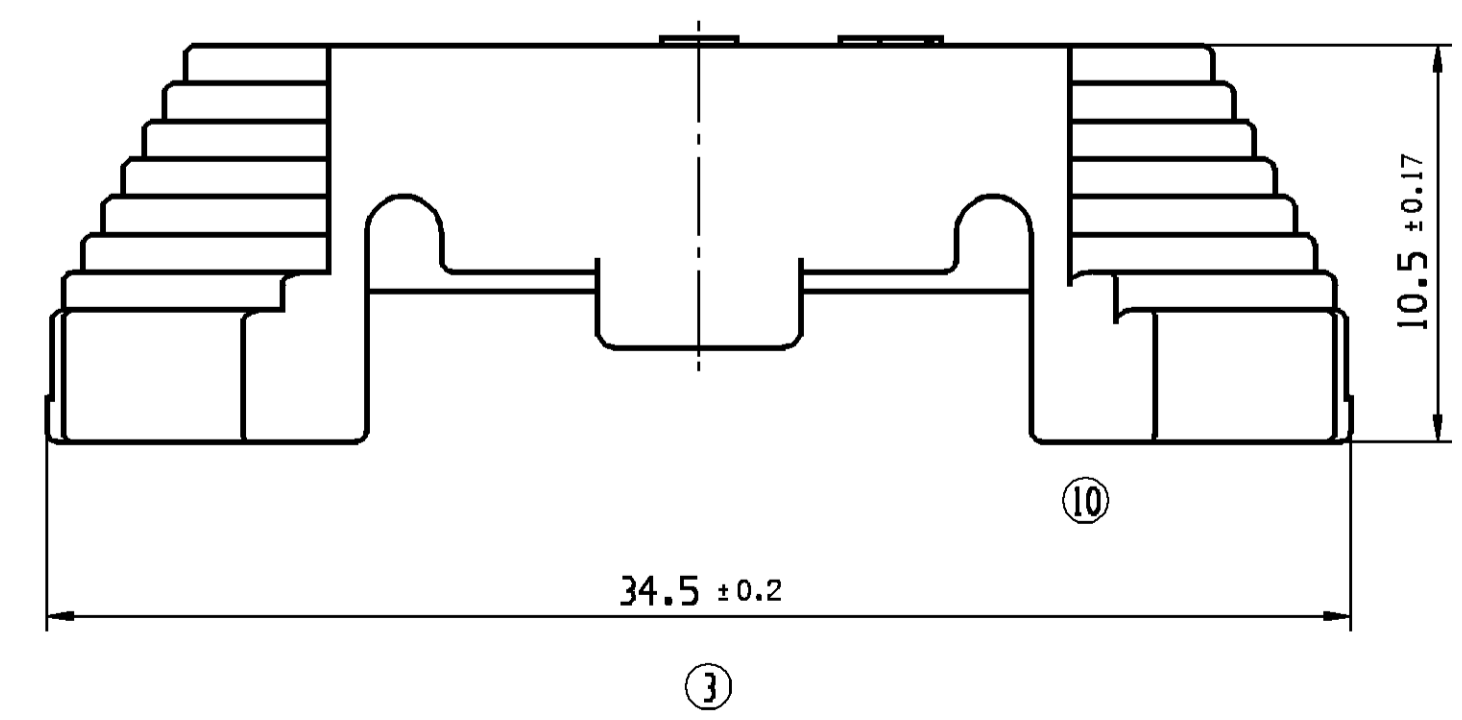
ID-NR. / PART-NO.	PART-REV	DATE DATUM	MATERIAL WERKSTOFF	RAL	ZONE	DWG STATUS REV N/P/CHK	REVISION HISTORY	DATE	NAME	CHECK	STCHK
400 569 / 12147060	10	160C98	PA 6 BLK	9005	A2	01	DRAWING-NR. WAS 6302.097/001 ZEICHNUNGS-NR. WAR 6302.097/001	24JL89	GLOCK		
					H10	02	DIM. 30,740.28 WAS 30,840.28 MASS 30,740.28 WAR 30,840.28	17AUB9	GLOCK		
					A10	03	DIM. 34,540.2 WAS 34,840.2 MASS 34,540.2 WAS 34,840.2	17AUB9	GLOCK		
					H10	04	TOLERANCE ±0.3 WAS ±0.28 TOLERANZ ±0.3 WAR ±0.28	11SE89	GLOCK		
						05	DRAWING ON CAD NEW DRAW UP ZEICHNUNG AUF CAD NEU ERSTELLT	060C93	K/MICHBR-MUE		
					H6	06	AK 13767-15W TO ID-NR. 400 569 CHANGED AK 13767-15W IN ID-NR. 400 569 BEANDERT	23FE94	BR-MUE		
					A3	09	NOT DIMENSIONED RADII R0.5 ADDED NICHT DIMENSIONIERTE RUNDUNGEN R0.5 HINZU	160C98	KOREN D.KOB.		
					B9/D5	10	VIEL CHANGED DARSTELLUNG KORRIGIERT	160C98	KOREN D.KOB.		
						10	DRAWING WITH US NEW DRAW UP ZEICHNUNG AUF US NEU ERSTELLT	13FE01	U/GAT. WEHDE R.WIS.		



FORM AND TOOL CAVITY NUMBER / FORMAT
ACCORDING TO DIN 1451; H=2 MM
FORM- UND NESTKENNZEICHNUNG / SCHRIFTART
NACH DIN 1451; H=2 MM

MANUFACTURER MARK X=3
HERSTELLERZEICHEN X=3

MATERIAL NAME ACCORDING TO VDA 260
FORMAT ACCORDING TO DIN 1451; H=2 MM
WERKSTOFFKENNZEICHNUNG NACH VDA 260
SCHRIFTART NACH DIN 1451; H=2 MM



- REMARKS:**
- MATING PART: RECEPTACLE HOUSING 2 WAY
 - ID-NR.: 420 442 / PART-NO.: 10721002
 - NOT DIMENSIONED RADII R 0.5 MM
 - MAXIMUM DRAFT ANGLE 0°30'
 - LETTERS AND GRAVES 0.1 MM RAISED
 - PART MUST BE CONDITIONED
 - NO SHARP EDGES
- BEMERKUNGEN:**
- PASSEND FUER FLACHSTECKHUELSENGEHAEUSE 2 POL.
 - ID-NR.: 420 442 / PART-NO.: 10721002
 - NICHT DIMENSIONIERTE RUNDUNGEN R 0.5 MM
 - ZULAESSIGE ENTFORMUNGSSCHRAEGE MAX. 0°30'
 - SCHRIFTEN UND GRAVUREN 0.1 MM ERHABEN
 - TEILE MUESSEN KONTITIONIERT WERDEN
 - KEINE SCHARFEN KANTEN

DIM TO CHECK PRUEFMASSE	+0.2 MAX	DIMENSIONAL RANGE (MM) NENNMASSBEREICH (MM)	
		FROM TO	0 20 > 20 > 30 > 30 > 70 > 70 > 100 > 100 > 150 > 150 > 200 > 200 > 250 > 250 > 300 > 300
DIM FOR HELP HILFSMASSE	-0.1 MAX	TOLERANCE UNLESS OTHERWISE SPECIFIED TOLERANZ UNLESS OTHERWISE SPECIFIED	
		ALLGEMEINTOLERANZEN	
THEORETIC DIM THEORET. MASSE		ANGULAR TOLERANCE ± 2° WINKELTOLERANZ ± 2°	
		[±0.15] ±0.2 ±0.3 ±0.4 ±0.5 ±0.6 ±0.8 ±1.0 ±1.2	

SCALE/MASSSTAB
1:1

COPYING OF THIS DOCUMENT, AND GIVING IT TO OTHERS AND THE USE OR COMMUNICATION OF THE CONTENTS THEREOF, ARE FORBIDDEN WITHOUT EXPRESS AUTHORITY. OFFENDERS ARE LIABLE TO THE PAYMENT OF DAMAGES. ALL RIGHTS ARE RESERVED IN THE EVENT OF THE GRANT OF A PATENT OR THE REGISTRATION OF A UTILITY MODEL OR DESIGN. FURTHERMORE, SOME RIGHTS RESERVED IN THIS DRAWING, INCLUDING THE RIGHT TO MAKE COPIES, IS NOT GRANTED. SOME RIGHTS RESERVED IN THIS DRAWING, INCLUDING THE RIGHT TO MAKE COPIES, IS NOT GRANTED. ALL RIGHTS RESERVED IN THIS DRAWING, INCLUDING THE RIGHT TO MAKE COPIES, IS NOT GRANTED.

DELPHI D - 42119 WUPPERTAL	DATE	NAME
	12FE01	U/GAT.
DRAWN BY BEARBEITET	DATE	NAME
	12FE01	WEHDE
CHECKED BY GEPRUEFT	DATE	NAME
	12FE01	R.WIS.

VOLUME / WEIGHT
--- / ---

MATERIAL WERKSTOFF
SEE CHART / SIEHE TABELLE

BENENNUNG/TITLE
**LOCKING CAP 2 WAY
FOR / FUER METRI-PACK 630
VERRIEGELUNGSKAPPE 2 POL.**

MASSSTAB/SCALE
**5:1
1:1**

PROJECTION

ZEICHNUNGS-NR.
DRAWING-NO.
6302.128/...

TEIL
PIECE
K

BLATT
PAGE
1

VON
FORM
1

STATUS

ERSTELLUNG DER ORIGINALZEICHNUNG / ORIGINAL DESIGN
DATE: 21.02.1999 / NAME: K.FLUEBEL / SCHER

DRAWING - NO.: **13577892**

FORMAT: **A1**

DELPHI

DELPHI
D - 42119 WUPPERTAL

DELPHI
D - 42119 WUPPERTAL

CONTROLLED DOCUMENTS ARE ONLY AVAILABLE ON THE SERVER