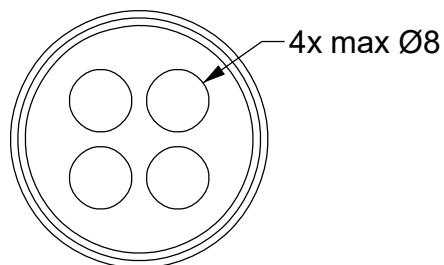
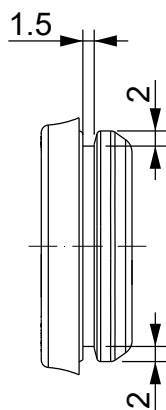
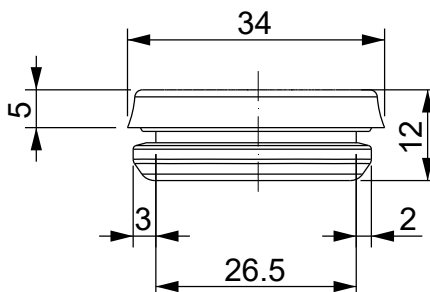
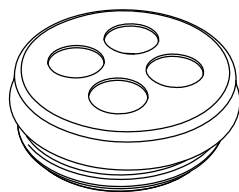


A

B

C

D

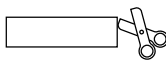


Versione colore NERO:
1732063505 DES PM M25/4B

Spessore parete: 1.5 - 2.5 mm (tipo 1) / 2.8 - 4 mm (tipo 2)

Infiammabilità: UL94-V0, autoestinguente
Temperatura: -40°C ... +105°C
Proprietà: senza alogeni, senza siliceni
Materiale: elastomero termoplastico (TPE)

Apertura consigliata:
Ø25.5 mm



IP65

NEMA
12

UL TYPE
12



UL94-V0



Codice / Code

1732062504

Descrizione / Description

DES PM M25/4G

Rev.
003

Materiale / Material
TPE

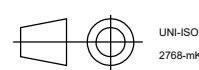
Colore / Color
Grigio

Peso / Weight (g)
-

Unità di misura / Measure units
mm

Formato / Format
A4

Scala / Scale
1:1



Data / Date
15/12/2021

Numero foglio / Sheet number
-

Numero progetto / Project number
-

Disegn. / Drawn
ravezzano@detas.com

Note / Notes
-

QUESTO DISEGNO E LE SUE INFORMAZIONI SONO STRETTAMENTE RISERVATE DI PROPRIETÀ DETAS SPA.
NON UTILIZZARE PER SCOPI DIVERSI DA QUELLI PER CUI SONO STATE FORNITE. DO NOT SCALE DRAWING.

A

B

C

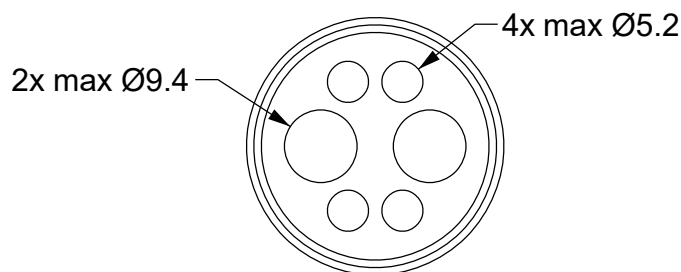
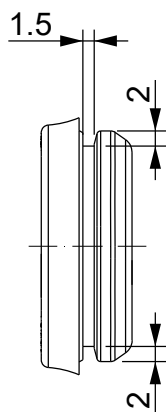
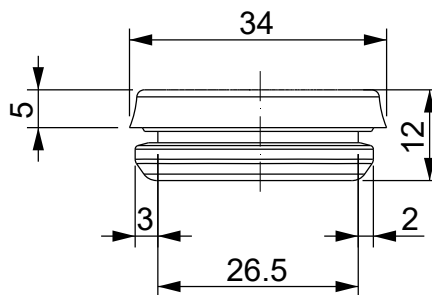
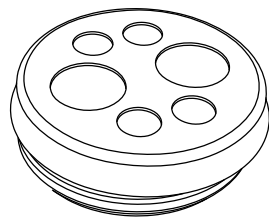
D

A

B

C

D

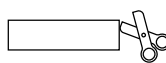


Versione colore NERO:
1732063507 DES PM M25/6B

Spessore parete: 1.5 - 2.5 mm (tipo 1) / 2.8 - 4 mm (tipo 2)

Infiammabilità: UL94-V0, autoestinguente
Temperatura: -40°C ... +105°C
Proprietà: senza alogeni, senza siliceni
Materiale: elastomero termoplastico (TPE)

Apertura consigliata:
Ø25.5 mm



IP65

NEMA
12

UL TYPE
12



ECOLAB



UL94-V0



UV
ISO 4892-2A



RoHS
COMPLIANT

Codice / Code

1732062506

Descrizione / Description

DES PM M25/6G

Rev.

003

Materiale / Material

TPE

Colore / Color

Grigio

Peso / Weight (g)

-

Unità di misura / Measure units

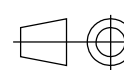
mm

Formato / Format

A4

Scala / Scale

1:1



UNI-ISO
2768-mk



Data / Date
15/12/2021

Numero foglio / Sheet number

-

Numero progetto / Project number

-

Disegn. / Drawn
ravezzano@detas.com

Note / Notes

-

QUESTO DISEGNO E LE SUE INFORMAZIONI SONO STRETTAMENTE RISERVATE DI PROPRIETÀ DETAS SPA.
NON UTILIZZARE PER SCOPI DIVERSI DA QUELLI PER CUI SONO STATE FORNITE. DO NOT SCALE DRAWING.

A

B

C

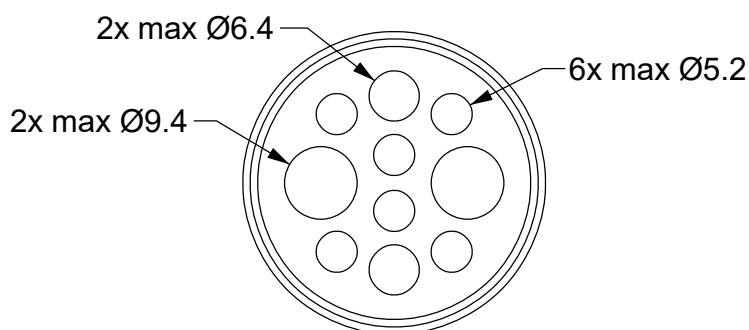
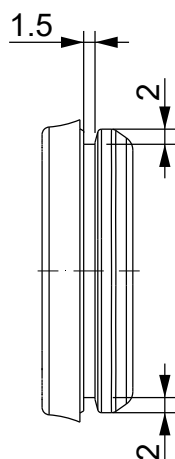
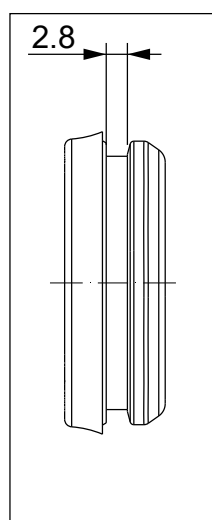
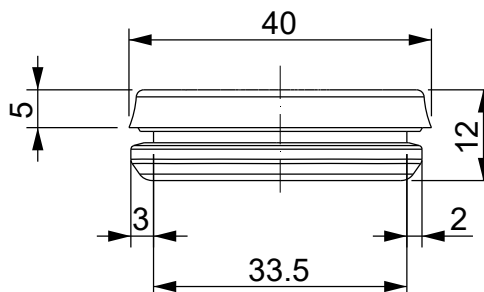
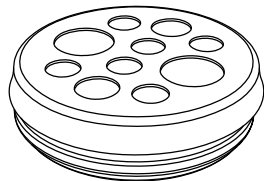
D

A

B

C

D



Type 2:
2.8 - 4 mm wall thickness

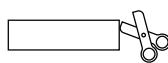
Versione TIPO 2:
1732263210 DES PM M32/10G T2

Versione colore NERO:
1732064211 DES PM M32/10B T1
1732264211 DES PM M32/10B T2

Spessore parete: 1.5 - 2.5 mm (tipo 1) / 2.8 - 4 mm (tipo 2)

Infiammabilità: UL94-V0, autoestinguente
Temperatura: -40°C ... +105°C
Proprietà: senza alogeni, senza siliceni
Materiale: elastomero termoplastico (TPE)

Apertura consigliata:
Ø32.5 mm



IP65

NEMA
12

UL TYPE
12



ECOLAB



UL94-V0



UV
ISO 4892-2A



RoHS
COMPLIANT

Codice / Code

1732063210

Descrizione / Description

DES PM M32/10G

Rev.
003

Materiale / Material

TPE

Colore / Color

Grigio

Peso / Weight (g)

-

Unità di misura / Measure units

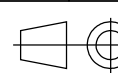
mm

Formato / Format

A4

Scala / Scale

1:1



UNI-ISO
2768-mk



Data / Date
15/12/2021

Numero foglio / Sheet number

-

Numero progetto / Project number

-

Disegn. / Drawn
ravezzano@detas.com

Note / Notes

-

QUESTO DISEGNO E LE SUE INFORMAZIONI SONO STRETTAMENTE RISERVATE DI PROPRIETÀ DETAS SPA.
NON UTILIZZARE PER SCOPI DIVERSI DA QUELLI PER CUI SONO STATE FORNITE. DO NOT SCALE DRAWING.

A

B

C

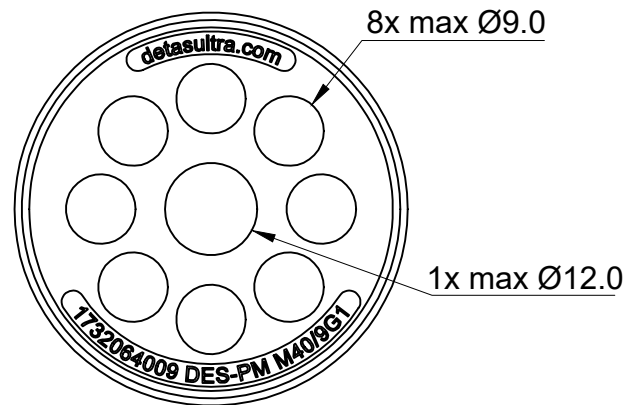
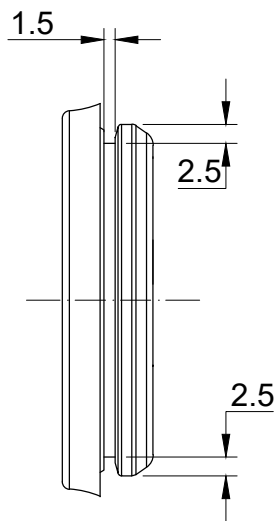
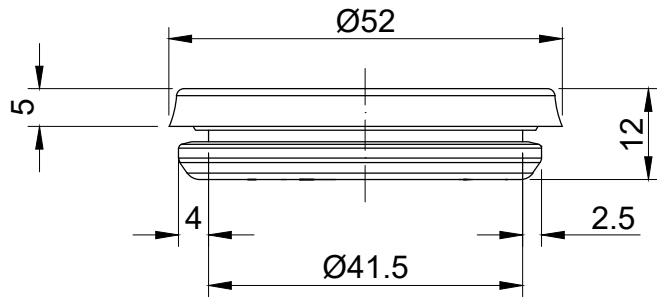
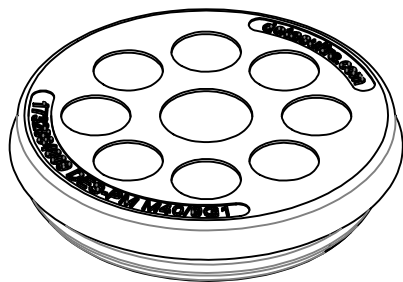
D

A

B

C

D

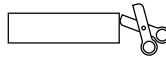


Versione colore NERO:

1732064012 DES-PM M40/9B

Infiammabilità: UL94-V0, autoestinguente
Temperatura: -40°C ... +105°C
Proprietà: senza alogeni, senza siliconi
Materiale: elastomero termoplastico (TPE)

Apertura consigliata:
 Ø40.5 mm



C  US
 pending

IP65

NEMA
 12

UL TYPE
 12

APPROVED

 MARKING TYPE

ECOLAB


 UL94-V0


 ISO 4892-2A

RoHS
 COMPLIANT

Codice / Code

1732064009

Descrizione / Description

DES PM M40/9G

Rev.
 000

Materiale / Material

TPE

Colore / Color

Grigio

Peso / Weight (g)

-

Unità di misura / Measure units

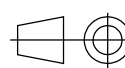
mm

Formato / Format

A4

Scala / Scale

1:1



UNI-ISO
 2768-MK



www.detasultra.com

Data / Date
 20/03/2023

Numero foglio / Sheet number

-

Numero progetto / Project number

-

Disegn. / Drawn
 Pozzi F.

Note / Notes

- Spessore parete: 1.5 mm

QUESTO DISEGNO E LE SUE INFORMAZIONI SONO STRETTAMENTE RISERVATE DI PROPRIETÀ DETAS SPA.
 NON UTILIZZARE PER SCOPI DIVERSI DA QUELLI PER CUI SONO STATE FORNITE. DO NOT SCALE DRAWING.

A

B

C

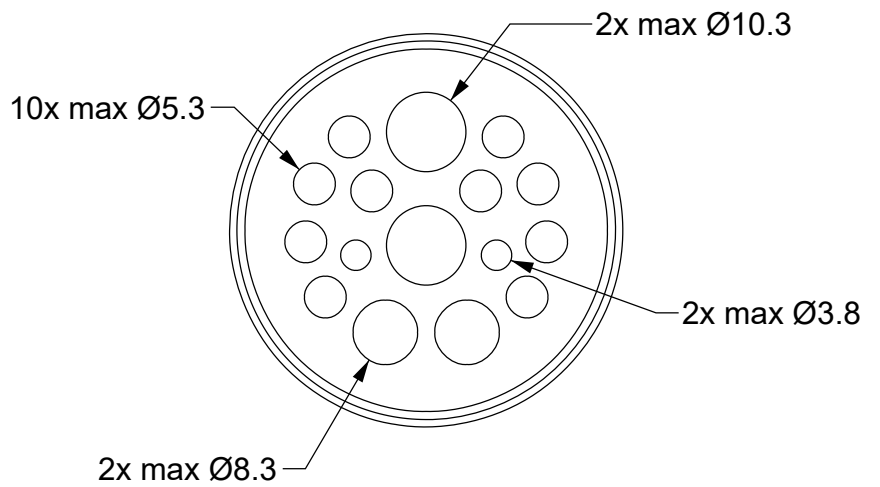
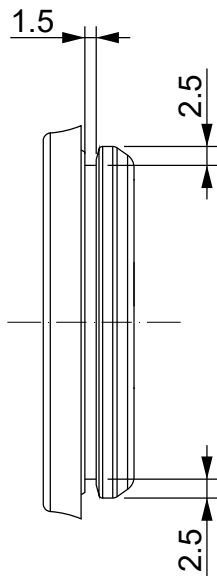
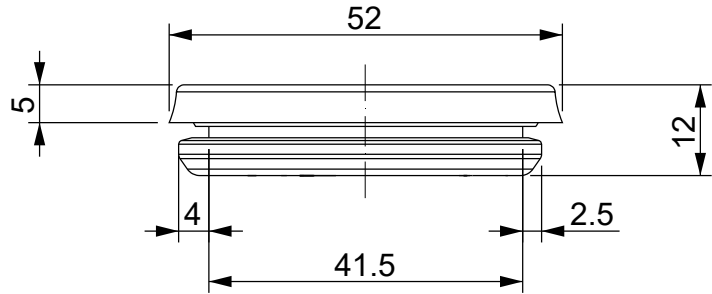
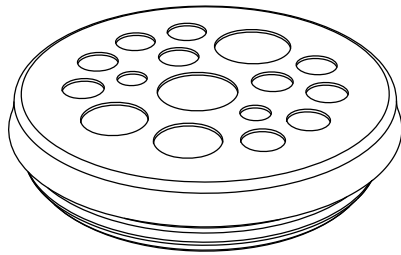
D

A

B

C

D

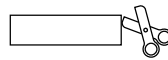


Versione colore NERO:
1732064017 DES PM M40/16B Type 2

Spessore parete: 1.5 - 2.5 mm (tipo 1) / 2.8 - 4 mm (tipo 2)

Infiammabilità: UL94-V0, autoestinguente
Temperatura: -40°C ... +105°C
Proprietà: senza alogeni, senza siliceni
Materiale: elastomero termoplastico (TPE)

Apertura consigliata:
Ø40.5 mm



IP65

NEMA
12

UL TYPE
12



ECOLAB



Codice / Code

1732064016

Descrizione / Description

DES PM M40/16G

Rev.
003

Materiale / Material
TPE

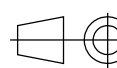
Colore / Color
Grigio

Peso / Weight (g)
-

Unità di misura / Measure units
mm

Formato / Format
A4

Scala / Scale
1:1



UNI-ISO
2768-mk



Data / Date
15/12/2021

Numero foglio / Sheet number
-

Numero progetto / Project number
-

Disegn. / Drawn
ravezzano@detas.com

Note / Notes
-

QUESTO DISEGNO E LE SUE INFORMAZIONI SONO STRETTAMENTE RISERVATE DI PROPRIETÀ DETAS SPA.
NON UTILIZZARE PER SCOPI DIVERSI DA QUELLI PER CUI SONO STATE FORNITE. DO NOT SCALE DRAWING.

A

B

C

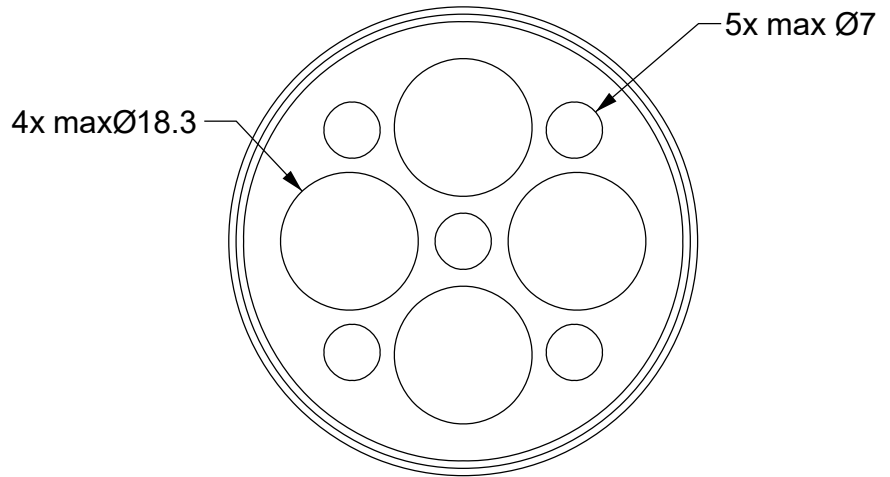
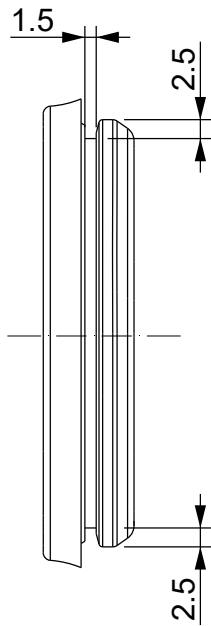
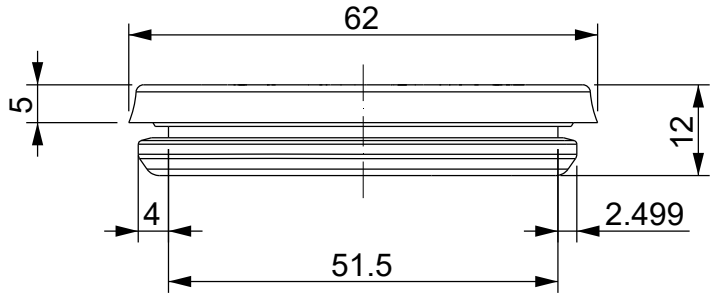
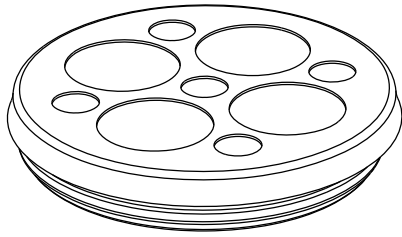
D

A

B

C

D

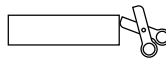


Versione colore NERO:

1732066010 DES PM M50/9B

Spessore parete: 1.5 - 2.5 mm (tipo 1) / 2.8 - 4 mm (tipo 2)

Infiammabilità: UL94-V0, autoestinguente
Temperatura: -40°C ... +105°C
Proprietà: senza alogeni, senza siliceni
Materiale: elastomero termoplastico (TPE)

Apertura consigliata:
Ø50.5 mm

IP65

NEMA
12UL TYPE
12

ECOLAB



UL94-V0

UV
ISO 4892-2ARoHS
COMPLIANT

Codice / Code

1732065009

Descrizione / Description

DES PM M50/9G

Rev.

003

Materiale / Material

TPE

Colore / Color

Grigio

Peso / Weight (g)

-

Unità di misura / Measure units

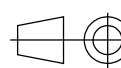
mm

Formato / Format

A4

Scala / Scale

1:1

UNI-ISO
2768-mk

www.detasultra.com

Data / Date

15/12/2021

Numero foglio / Sheet number

-

Numero progetto / Project number

-

Disegn. / Drawn

ravezzano@detas.com

Note / Notes

-

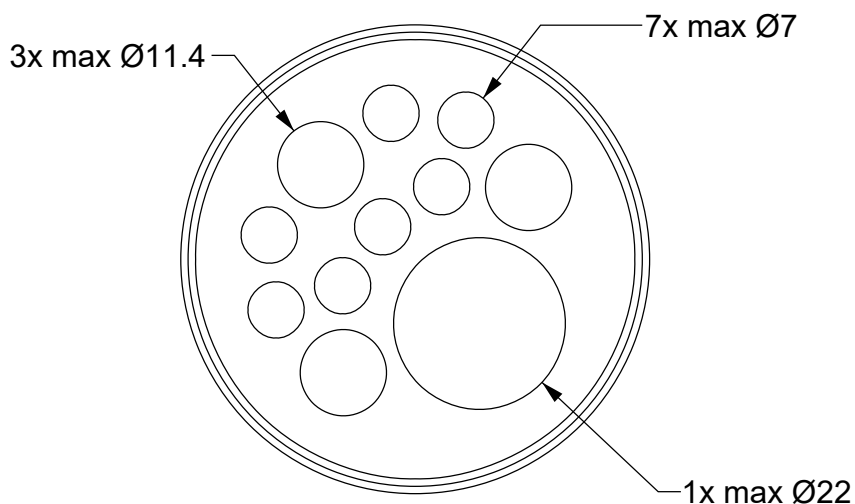
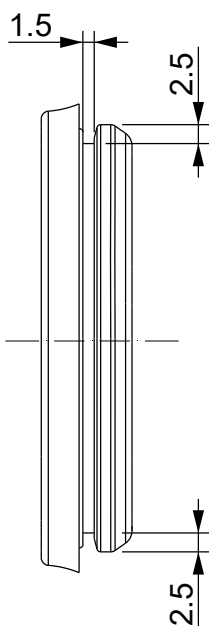
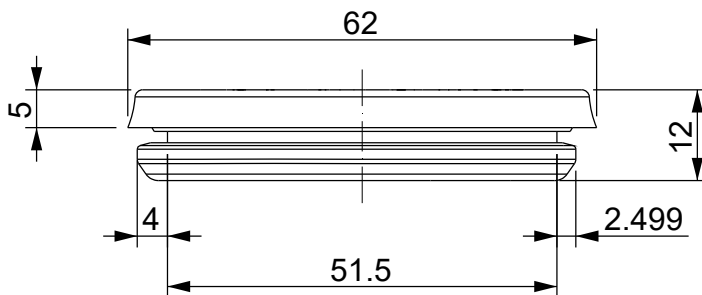
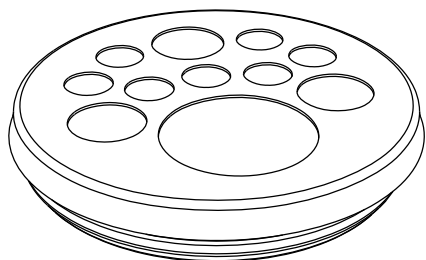
QUESTO DISEGNO E LE SUE INFORMAZIONI SONO STRETTAMENTE RISERVATE DI PROPRIETÀ DETAS SPA. NON UTILIZZARE PER SCOPI DIVERSI DA QUELLI PER CUI SONO STATE FORNITE. DO NOT SCALE DRAWING.

A

B

C

D

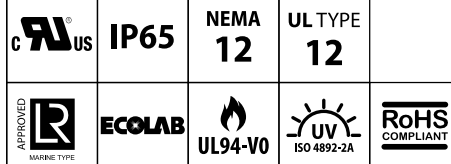
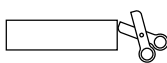


Versione colore NERO:
1732066012 DES PM M50/11B

Spessore parete: 1.5 - 2.5 mm (tipo 1) / 2.8 - 4 mm (tipo 2)

Infiammabilità: UL94-V0, autoestinguente
Temperatura: -40°C ... +105°C
Proprietà: senza alogeni, senza siliceni
Materiale: elastomero termoplastico (TPE)

Apertura consigliata:
Ø50.5 mm



Codice / Code

1732065011

Descrizione / Description

DES PM M50/11G

Rev.
003

Materiale / Material
TPE

Colore / Color
Grigio

Peso / Weight (g)
-

Unità di misura / Measure units
mm

Formato / Format
A4

Scala / Scale
1:1



Data / Date
15/12/2021

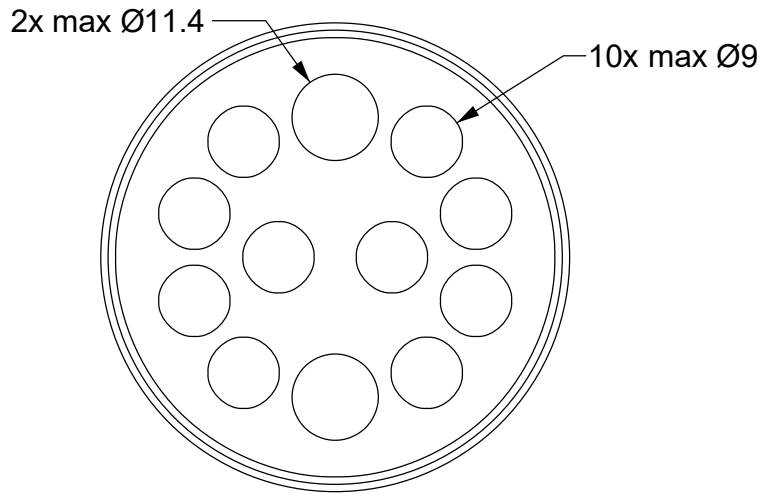
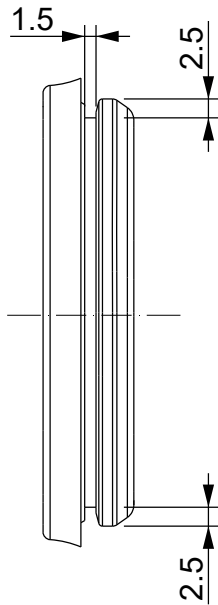
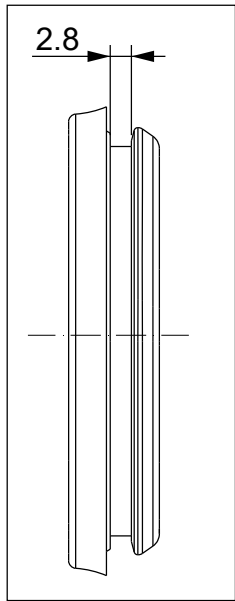
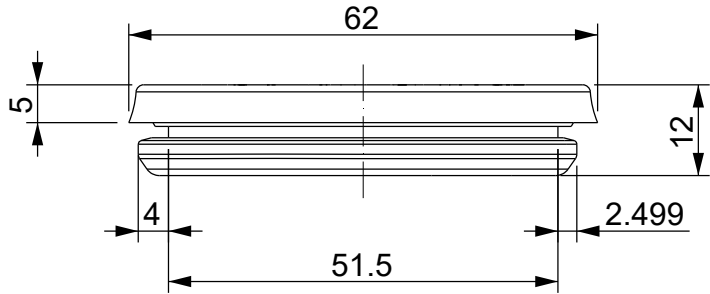
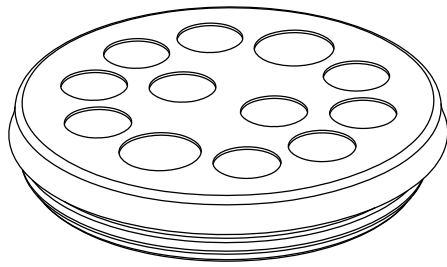
Numero foglio / Sheet number
-

Numero progetto / Project number
-

Disegn. / Drawn
ravezzano@detas.com

Note / Notes
-

QUESTO DISEGNO E LE SUE INFORMAZIONI SONO STRETTAMENTE RISERVATE DI PROPRIETÀ DETAS SPA. NON UTILIZZARE PER SCOPI DIVERSI DA QUELLI PER CUI SONO STATE FORNITE. DO NOT SCALE DRAWING.



Type 2:
2.8 - 4 mm wall thickness

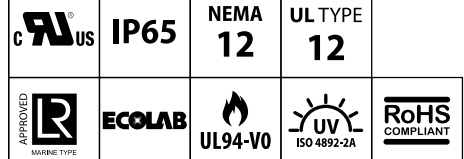
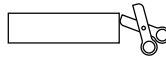
Versione TIPO 2:
1732265012 DES PM M50/12G T2

Versione colore NERO:
1732066013 DES PM M50/12B T1
1732266013 DES PM M50/12B T2

Spessore parete: 1.5 - 2.5 mm (tipo 1) / 2.8 - 4 mm (tipo 2)

Infiammabilità: UL94-V0, autoestinguente
Temperatura: -40°C ... +105°C
Proprietà: senza alogeni, senza siliceni
Materiale: elastomero termoplastico (TPE)

Apertura consigliata:
Ø50.5 mm



Codice / Code

1732065012

Descrizione / Description

DES PM M50/12G

Rev.
003

Materiale / Material

TPE

Colore / Color

Grigio

Peso / Weight (g)

-

Unità di misura / Measure units

mm

Formato / Format

A4

Scala / Scale

1:1



Data / Date
15/12/2021

Numero foglio / Sheet number

-

Numero progetto / Project number

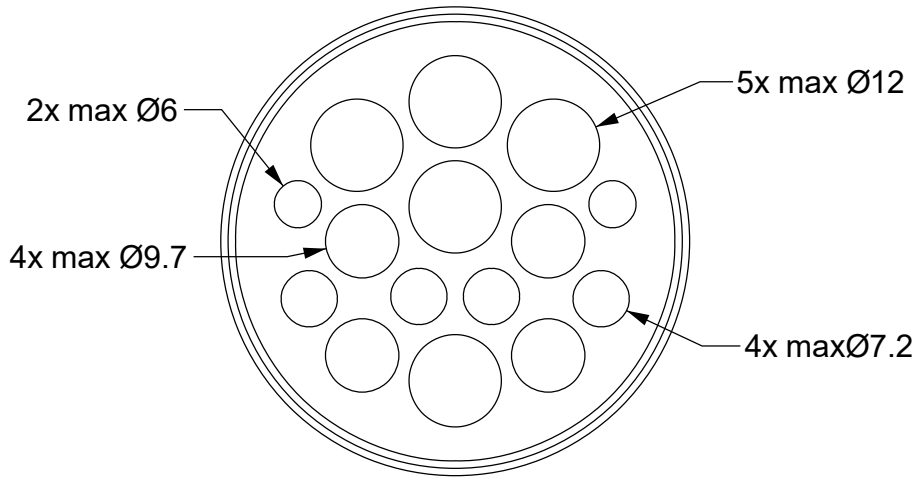
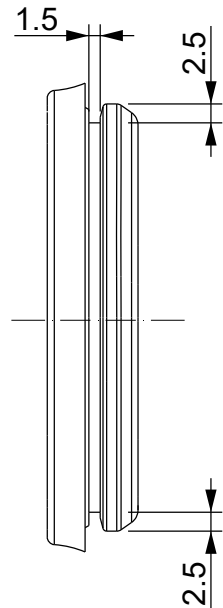
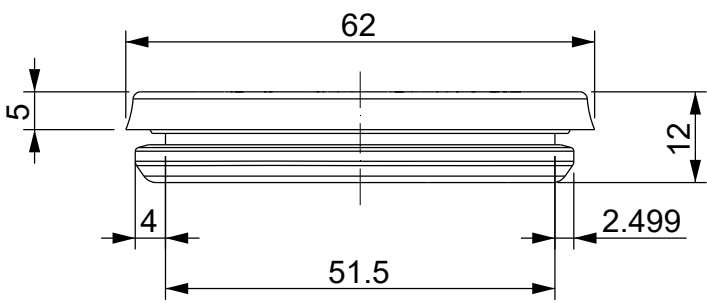
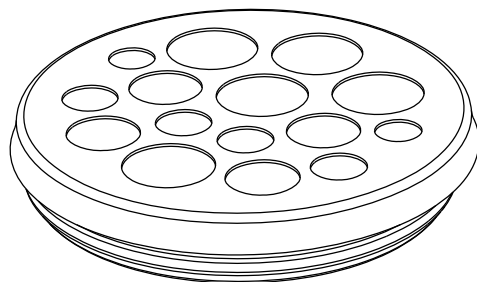
-

Disegn. / Drawn
ravezzano@detas.com

Note / Notes

-

QUESTO DISEGNO E LE SUE INFORMAZIONI SONO STRETTAMENTE RISERVATE DI PROPRIETÀ DETAS SPA. NON UTILIZZARE PER SCOPI DIVERSI DA QUELLI PER CUI SONO STATE FORNITE. DO NOT SCALE DRAWING.



Versione colore NERO:
1732066016 DES PM M50/15B

Spessore parete: 1.5 - 2.5 mm (tipo 1) / 2.8 - 4 mm (tipo 2)

Infiammabilità: UL94-V0, autoestinguente Temperatura: -40°C ... +105°C Proprietà: senza alogeni, senza siliceni Materiale: elastomero termoplastico (TPE)			Apertura consigliata: Ø50.5 mm 			IP65	NEMA 12	UL TYPE 12		
Codice / Code 1732065015			Descrizione / Description DES PM M50/15G						Rev. 003	
Materiale / Material TPE	Colore / Color Grigio	Peso / Weight (g) -	Unità di misura / Measure units mm	Formato / Format A4	Scala / Scale 1:1					
 www.detasultra.com <small>QUESTO DISEGNO E LE SUE INFORMAZIONI SONO STRETTAMENTE RISERVATE DI PROPRIETA' DETAS SPA. NON UTILIZZARE PER SCOPI DIVERSI DA QUELLI PER CUI SONO STATE FORNITE. DO NOT SCALE DRAWING.</small>			Data / Date 15/12/2021	Numero foglio / Sheet number -		Numero progetto / Project number -				
			Disegn. / Drawn ravezzano@detas.com	Note / Notes -						

A

B

C

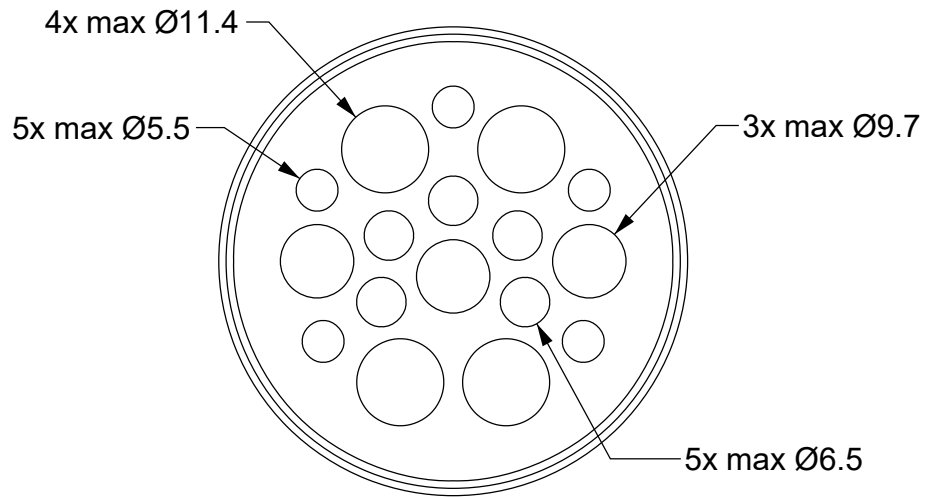
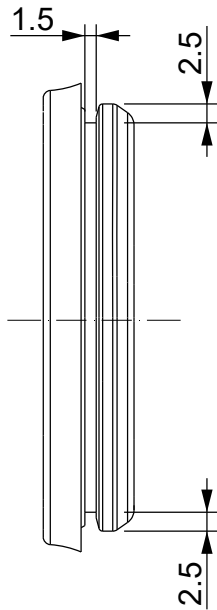
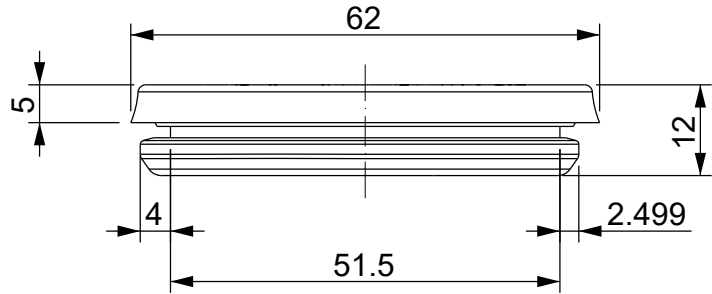
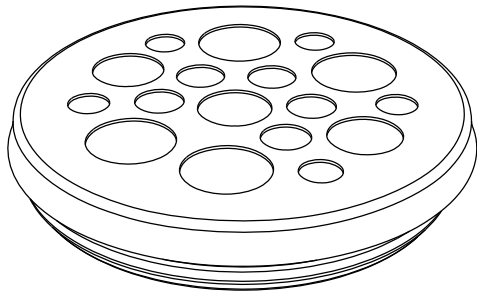
D

A

B

C

D

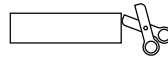


Versione colore NERO:

1732066018 DES PM M50/17B

Spessore parete: 1.5 - 2.5 mm (tipo 1) / 2.8 - 4 mm (tipo 2)

Infiammabilità: UL94-V0, autoestinguente
Temperatura: -40°C ... +105°C
Proprietà: senza alogeni, senza siliceni
Materiale: elastomero termoplastico (TPE)

Apertura consigliata:
Ø50.5 mm

IP65

NEMA
12UL TYPE
12

ECOLAB



Codice / Code

1732065017

Descrizione / Description

DES PM M50/17G

Rev.
003

Materiale / Material

TPE

Colore / Color

Grigio

Peso / Weight (g)

-

Unità di misura / Measure units

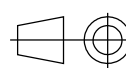
mm

Formato / Format

A4

Scala / Scale

1:1

UNI-ISO
2768-mkData / Date
15/12/2021

Numero foglio / Sheet number

-

Numero progetto / Project number

-

Disegn. / Drawn

ravezzano@detas.com

Note / Notes

-

QUESTO DISEGNO E LE SUE INFORMAZIONI SONO STRETTAMENTE RISERVATE DI PROPRIETÀ DETAS SPA. NON UTILIZZARE PER SCOPI DIVERSI DA QUELLI PER CUI SONO STATE FORNITE. DO NOT SCALE DRAWING.

A

B

C

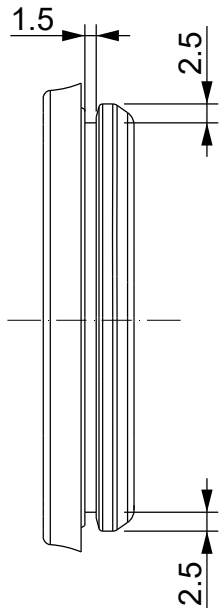
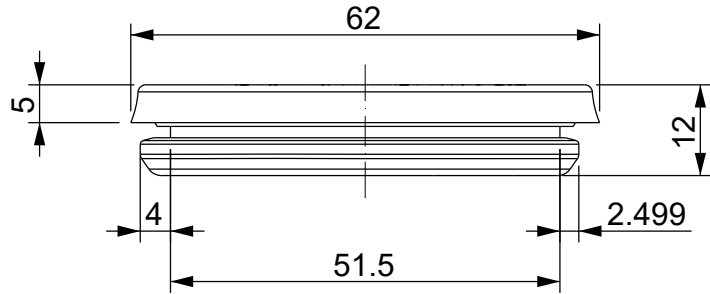
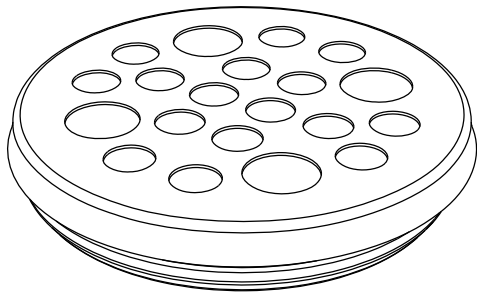
D

A

B

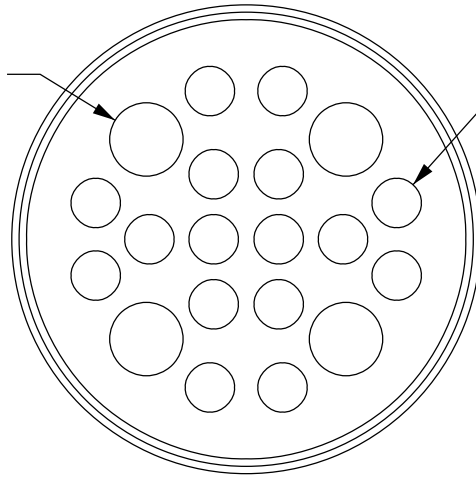
C

D



4x max Ø9.7

16x max Ø6.5

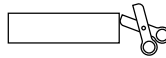


Versione colore NERO:

1732066021 DES PM M50/20B

Spessore parete: 1.5 - 2.5 mm (tipo 1) / 2.8 - 4 mm (tipo 2)

Infiammabilità: UL94-V0, autoestinguente
Temperatura: -40°C ... +105°C
Proprietà: senza alogeni, senza siliceni
Materiale: elastomero termoplastico (TPE)

Apertura consigliata:
Ø50.5 mm

IP65

NEMA
12UL TYPE
12

ECOLAB



UL94-V0

UV
ISO 4892-2ARoHS
COMPLIANT

Codice / Code

1732065020

Descrizione / Description

DES PM M50/20G

Rev.

003

Materiale / Material

TPE

Colore / Color

Grigio

Peso / Weight (g)

-

Unità di misura / Measure units

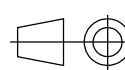
mm

Formato / Format

A4

Scala / Scale

1:1

UNI-ISO
2768-mk

Data / Date

15/12/2021

Numero foglio / Sheet number

-

Numero progetto / Project number

-

Disegn. / Drawn

ravezzano@detas.com

Note / Notes

-

QUESTO DISEGNO E LE SUE INFORMAZIONI SONO STRETTAMENTE RISERVATE DI PROPRIETÀ DETAS SPA.
 NON UTILIZZARE PER SCOPI DIVERSI DA QUELLI PER CUI SONO STATE FORNITE. DO NOT SCALE DRAWING.

A

B

C

D