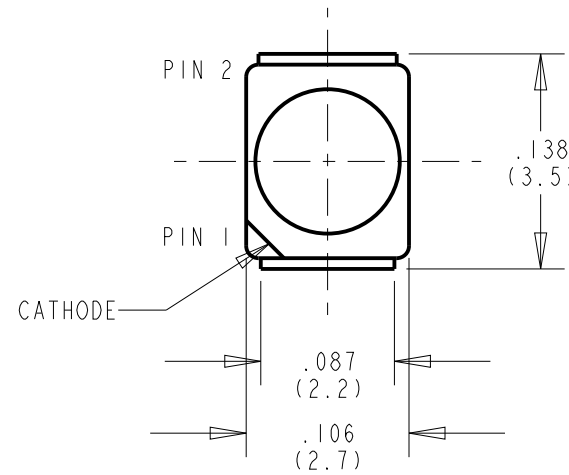
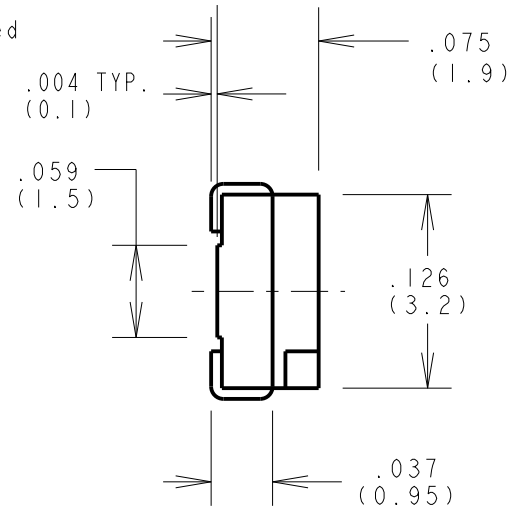
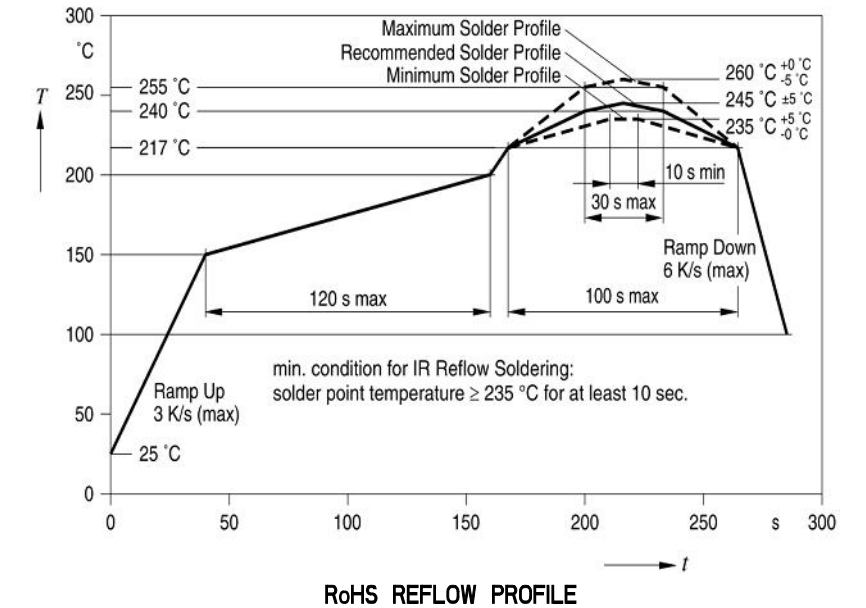


RoHS COMPLIANT 597-3001-20XF

Part Numbers with the "F" suffix ending are RoHS Compliant.
 For example: 597-3001-202F
 Reel and bag packaging are marked with "RoHS Compliant" label or equivalent markings. These parts can be used with RoHS reflow profile. Parts can be wave soldered, dip soldered or hand soldered using typical lead-free soldering process with max 260°C temp. for 5 sec.



REV	ECN NO	REVISIONS	DRN	CKD	APP	DATE
A		NEW RELEASE	WFB	JTD	N.O.	3-13-13



NOTES:

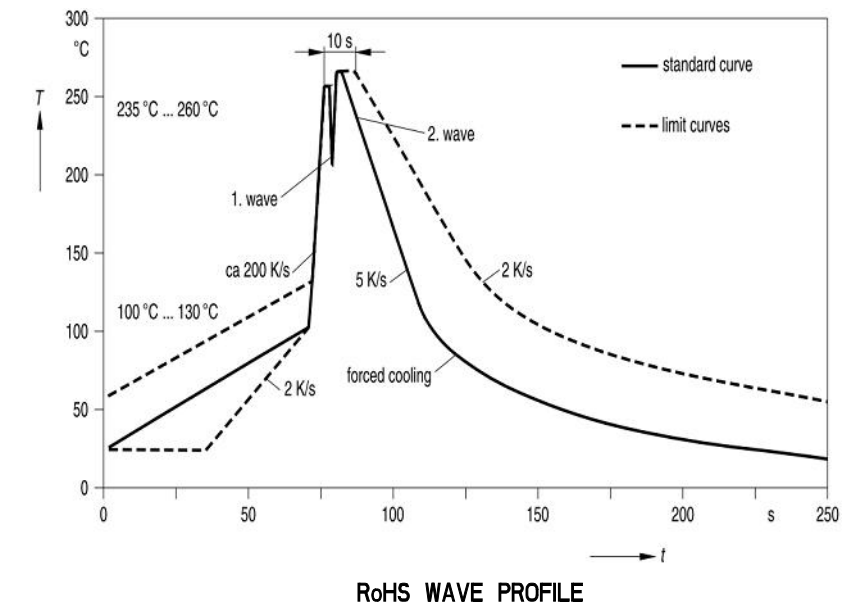
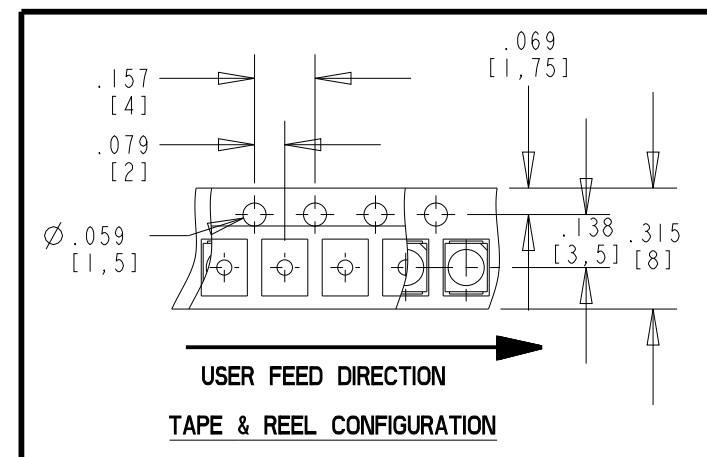
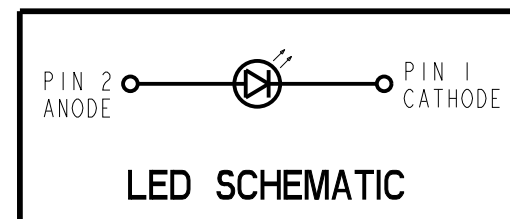
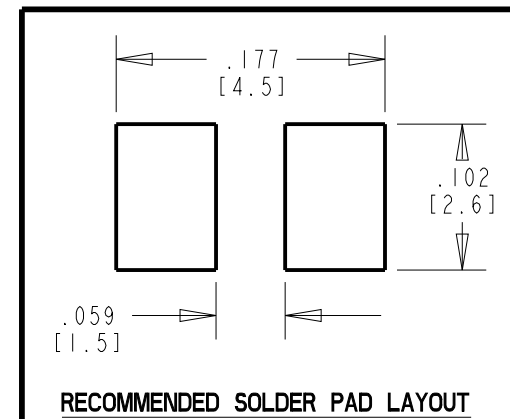
1. DIALIGHT P/N: 597-3001-202F, 597-3001-207F.
2. EPOXY COLOR: WATER CLEAR.
3. DIE: GaAsP RED LED.
4. SUFFIX -202F FOR 20-PCS ON A SAMPLE TAPE STRIP.
5. SUFFIX -207F FOR 180 mm DIA. REEL, 8 mm WIDE TAPE, PACKAGED 2000-PCS PER REEL WITH A PITCH OF 4 mm.
6. DEVICES POSITIONED ON REEL WITH CATHODE SIDE TOWARDS SPROCKET.
7. TAPE AND REEL LEDS MAY REQUIRE RE-TAPING AFTER TWELVE MONTHS.
8. PIN NUMBERS ARE FOR REFERENCE ONLY. DESIGNATION NON-EXISTENT ON PART OR REEL TAPE
9. THIS PRODUCT IS RoHS COMPLIANT. EACH REEL AND BAG IS MARKED WITH RoHS COMPLIANT LABEL (9100-117-0852-99) OR EQUIVALENT MARKINGS.

OPERATING CHARACTERISTICS AT 25 °C AMBIENT

LED CHARACTERISTICS	MIN.	TYP.	MAX.	UNITS	TEST CONDITIONS
LUMINOUS INTENSITY	4.5		18	mcd	$I_F = 10 \text{ mA}$
FORWARD VOLTAGE		2.0	2.5	V	$I_F = 10 \text{ mA}$
PEAK WAVELENGTH		635		nm	
DOMINANT WAVELENGTH		628		nm	
2 X 1/2-INTENSITY ANGLE		120		DEGREES	

ABSOLUTE MAXIMUM RATINGS AT 25 °C AMBIENT

CONTINUOUS FORWARD CURRENT	30 mA
DERATE LINEARLY FROM 60 °C	0.75 mA/°C
PEAK REVERSE VOLTAGE	12 V
OPERATING TEMPERATURE	-40 °C TO +100 °C
STORAGE TEMPERATURE	-40 °C TO +100 °C
IR REFLOW SOLDERING TEMPERATURE	260°C FOR 5 SEC



THIS DRAWING AND THE CONTENTS HEREIN ARE CONFIDENTIAL AND THE SOLE PROPERTY OF DIALIGHT. REPRODUCTION OF THIS DRAWING OR CONSTRUCTION OF ANY PARTS WITHIN THIS DRAWING ARE FORBIDDEN WITHOUT THE WRITTEN CONSENT OF DIALIGHT.		
SCALE: DRAWING SCALE ALL DIM'S IN: INCHES (MM)	DRAWING NUMBER C-17292	REV A
TOLERANCES: UNLESS OTHERWISE SPECIFIED	TITLE RED SMT PLCC-2 LED RoHS COMPLIANT	
FRACTIONS: ±1/64 DECIMALS (.XX): ±.01 DECIMALS (.XXX): ±.005 DECIMALS (.XXXX): ±.0005 ANGLES: ±1°	MATERIAL	
FINISH:	Dialight 1501 ROUTE 34 SOUTH FARMINGDALE, NJ 07727	
FSCM 83330	SHEET 1 OF 1 FAMILY TABLE:	