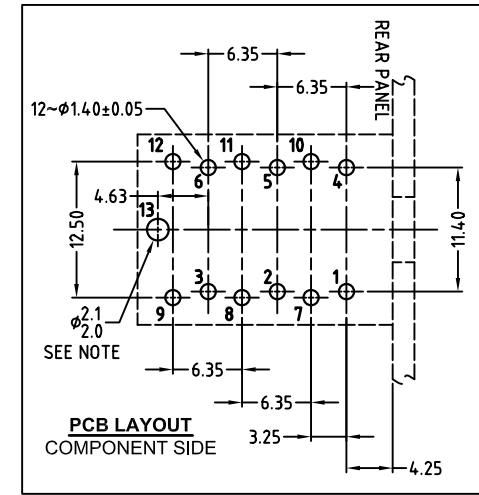
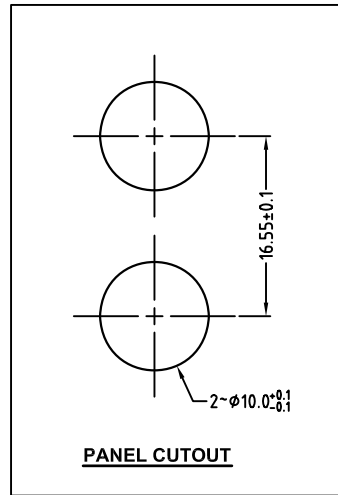
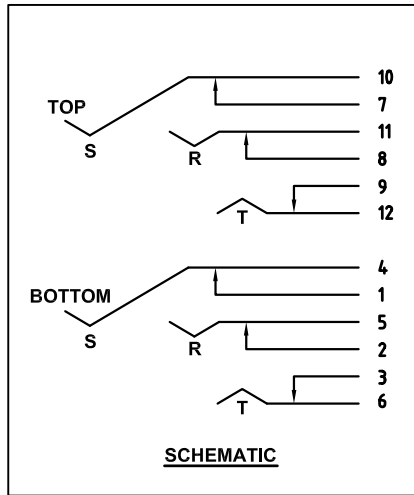
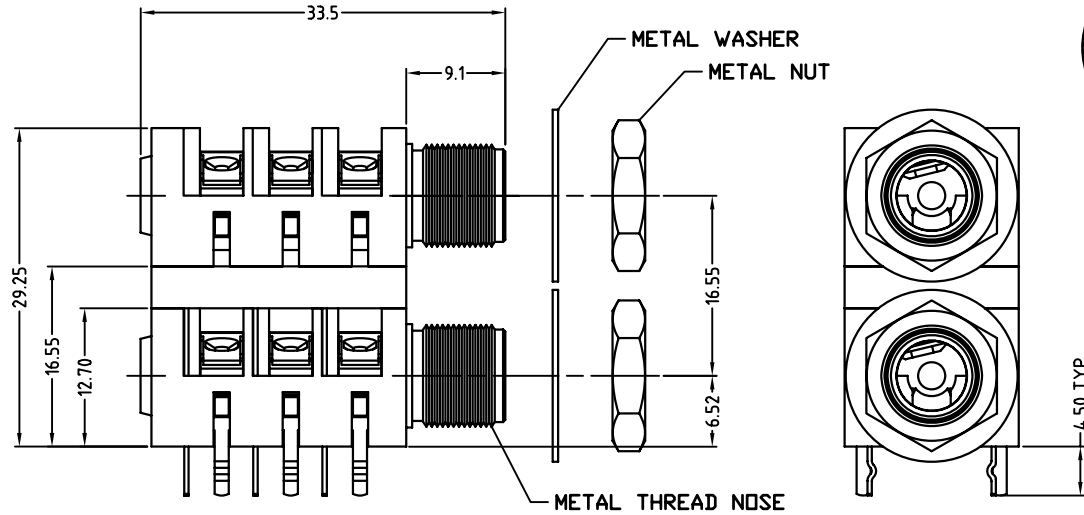
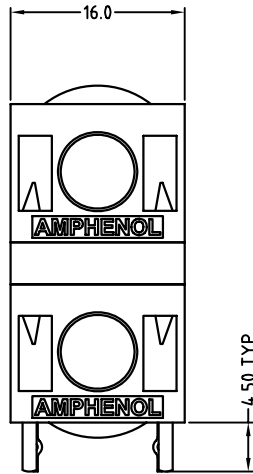


ISO VIEW
SCALE 1:1



NOTE: OPTIONAL MOUNTING HOLE FOR SELF-TAPPING M2 SCREW

| CATALOGUE P/N | NUT OPTIONS |
|---------------|-----------------------------|
| ACJS-LHDCM | NO NUT & WASHER |
| ACJS-MHDCM | METAL NUT & WASHER INCLUDED |

| | | | | | | | | | | |
|--|--------------|---|----------------------------|-------------------------|----------------|---|----------------|-----|----------|--------|
| UNLESS OTHERWISE SPECIFIED TOLERANCE TO BE | | THIS DOCUMENT IS THE PROPERTY OF AMPHENOL AUSTRALIA PTY. LTD. NO PART THEREOF MAY BE REPRODUCED AND USED WITHOUT THE PRIOR WRITTEN CONSENT OF THE OWNER | | | | 0 | FIRST ISSUE | M.H | 11-03-10 | ---- |
| LINEAR | ANGULAR | | | | | REV. | CHANGE DETAILS | BY | DATE | CHG/No |
| X ± 0.5 | X° ± 1° | CAD FILE: 55010660000220 | DRN: M.H | DATE: 11-03-10 | TITLE: | 1/4 PHONE STEREO COMPACT DUAL JACK METAL THREAD CUSTOMER DRAWING | | | | |
| X.X ± 0.2 | X°X' ± 30' | BREAK ALL SHARP EDGES AND REMOVE ALL BURRS | MATL: REFER TO COMPONENT | CKD: M.N.H | DATE: 16-10-09 | Amphenol Australia Pty Ltd, 2 Fireways Blvd, Keysborough, Vic3173 | | | | |
| X.XX ± 0.1 | X°X'X" ± 15" | DO NOT SCALE | FINISH: REFER TO COMPONENT | APP'D: P.M | DATE: 16-10-09 | DRAWING NO. 55010660-000-2 | | | | |
| DIMENSIONS IN MILLIMETRES | | THIRD ANGLE PROJECTION | SCALE: 2:1 UOS | PART No: REFER TO CHART | SIZE: A3 | SHEET 2 OF 2 | | | | |