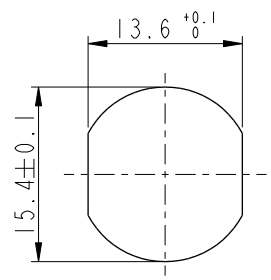


THIS DOCUMENT IS SUBJECT TO CHANGE WITHOUT NOTICE. IT IS CONFIDENTIAL AND A PROPERTY OF Amphenol LTW. DISCLOSURE TO THIRD PARTY HAS TO BE AUTHORIZED BY Amphenol LTW.

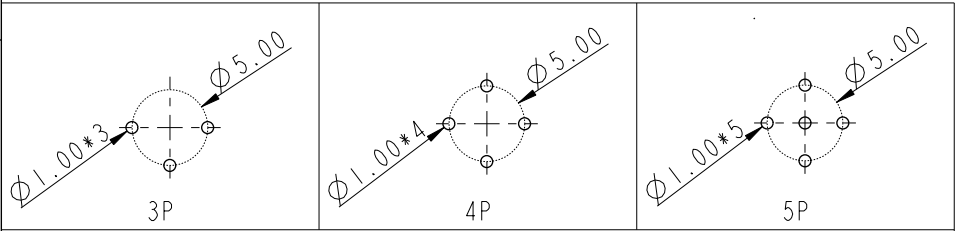
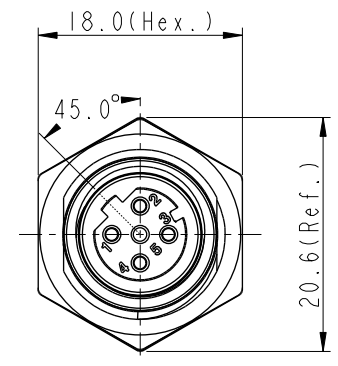
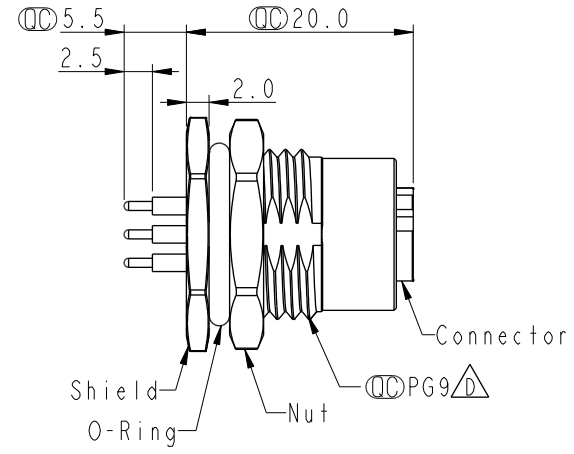
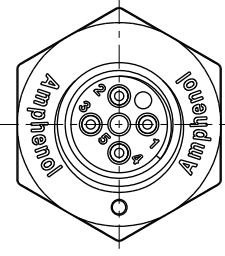
REV.	ECN NO.	DATE	SIGN	DESCRIPTION
D	C201469	2020/09/25	Ruru	X6
E	C210309	2021/02/26	Ruru	X2
F	C221973	2022/12/22	Ruru	X1



M12D-XXPFFP-SF8001

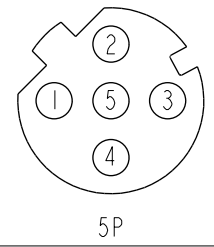
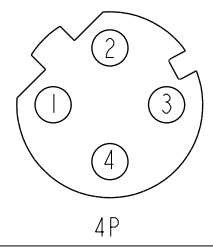
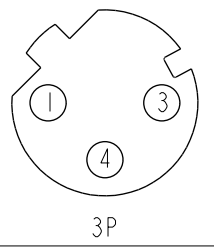
XX: No. Of Pin

Recommended Panel Cut-Out



PCB Layout

- Note:
- * RoHS Compliant
 - * \varnothing Important dimension
 - * Waterproof rate: IP68, unmated 1m/24h
IP69K, unmated
 - * Connector
Housing: Thermoplastic, Black
Pin: Copper alloy, Gold plated
O-Ring: Rubber, Green
 - * Shield: Metal
 - * Nut: Metal
 - * O-Ring: Rubber, Black
 - * For panel thickness max: 4.5mm
 - * Nut is packed separately in pe bag



Pin Assignment Front View

UNIT: mm		TITLE	N SEN, M12 D, SCREW RECEPTACLE, F, F, PCB S		
TOLERANCE	.X ±0.25 .XX ±0.1 .XXX ±0.05 ANGLES ±1°	SCALE	3:2	SIZE	A4
		REV.	F	WC-REV.	A.5
				\varnothing	Inspection item

Amphenol LTW
安費諾亮泰企業股份有限公司

ITEM NO	DRAWN BY	DATE
	Yulong_wang	2016-08-24
DWG NO	CHECKED BY	DATE
M12D-XXPFFP-SF8001	Cary	2016-08-24
CUSTOMER	APPROVED BY	DATE
ALTW	Jerry	2016-08-24