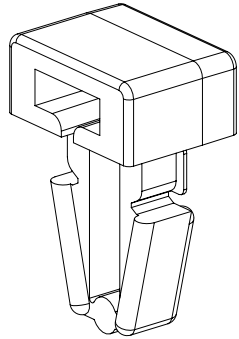
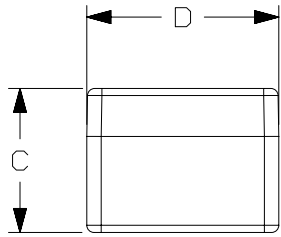


THIS COPY IS PROVIDED ON A RESTRICTED BASIS AND IS NOT TO BE USED IN ANY WAY DETRIMENTAL TO THE INTERESTS OF PANDUIT CORP.

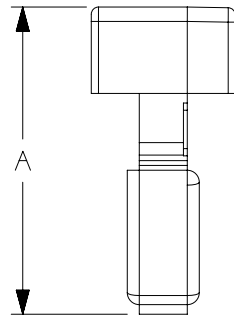
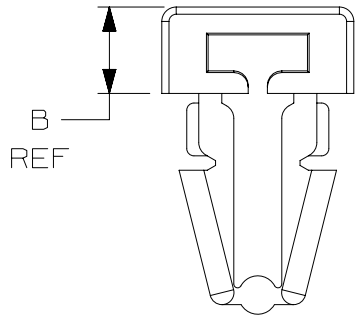


PANDUIT PART NO.	USE WITH THESE CABLE TIE CROSS-SECTIONS	DIMENSIONS				WEIGHT g/100pcs
		A	B	C	D	
PM2H25	MINIATURE INTERMEDIATE STANDARD	.62 (15.8)	.18 (4.6) REF	.30 (7.6)	.38 (9.6)	.10 (.45)



NOTES:

- SEE CURRENT PRICE SHEET FOR PART NUMBER SUFFIX DESIGNATION FOR PACKAGE SIZE, AND COLOR.
- (\* ) DIMENSIONAL VARIANCE IS POSSIBLE DUE TO MOLDING PROCESS RELATED SINK MARKS.
- APPLICATION SPECIFICATION:  
HOLE DIAMETER: .245 (6.3) - .255 (6.5)  
PANEL THICKNESS: .125 (3.2) (MAX)
4. BAG MAY CONTAIN EXTRA PIECES TO COMPENSATE FOR VARIANCE IN THE PACKAGING PROCESS. PANDUIT ASSURES MINIMUM PIECE COUNT AS STATED ON THE BAG.



REV	DATE	BY	CHK	APR	DESCRIPTION	ECN
4	12/7/2020	RVU	JADE	RMHI	ADDED NOTE 4.	GAECN05828
3	5/27/08	DJSM			CORRECTED FILE NAME.	GB0239IJ
2	5/22/08	DJSM			TABULARIZED DIMENSIONS, REMOVED WINDOW DIMENSIONS.	GB0239IJ
1	02/05/03	MSAD			.070 +/--.015 WAS .070 +/--.010 (1.8 +/--.38) (1.8 +/--.25).	GB0239IJ
R	01/10/02	LGG			INITIAL RELEASE.	GB0239IJ

TITLE <b>Cable Tie Mount Push Mount</b> CUSTOMER DRAWING					
ITEM REVISION NAME G0359710/01					
DATASET FILE NAME G0359710_DC_GB0239IJ_04					
UNLESS OTHERWISE SPECIFIED, DIMENSIONAL TOLERANCES ARE: IN [ mm ] .x ± 0.05 [ 1.3 ]      .xxx ± 0.010 [ 0.25 ] .xx ± 0.02 [ 0.5 ]      ANGLES ± 5 °					
MATERIAL: <b>NYLON 6/6</b>			DRAWING NUMBER: GB0239IJ		
DRAWN BY <b>LGG</b>	DATE <b>01/20/02</b>	CHK <b>JADE</b>	SCALE <b>5:2</b>	THIRD ANGLE PROJECTION 	
SHT 1 OF 1				SIZE <b>A</b>	

D10100DA/20