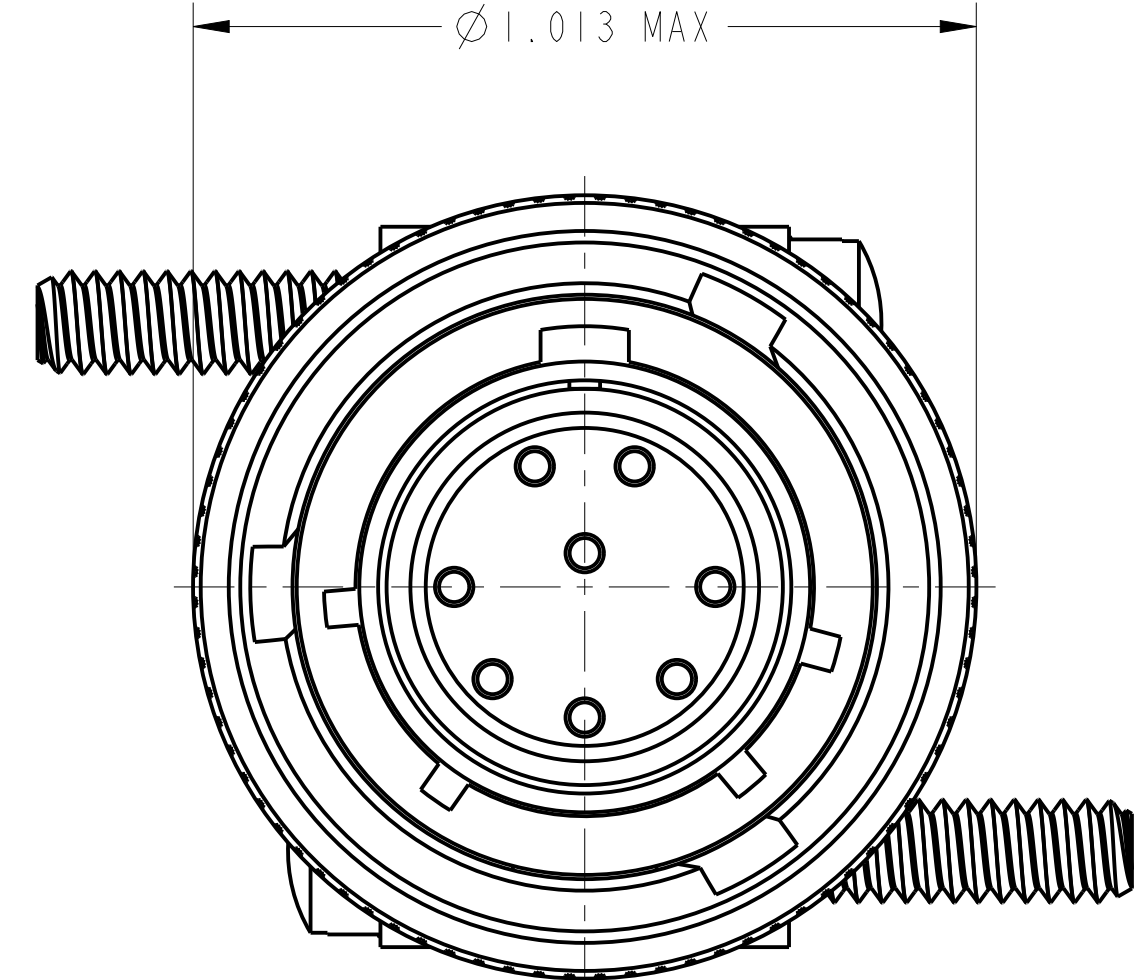
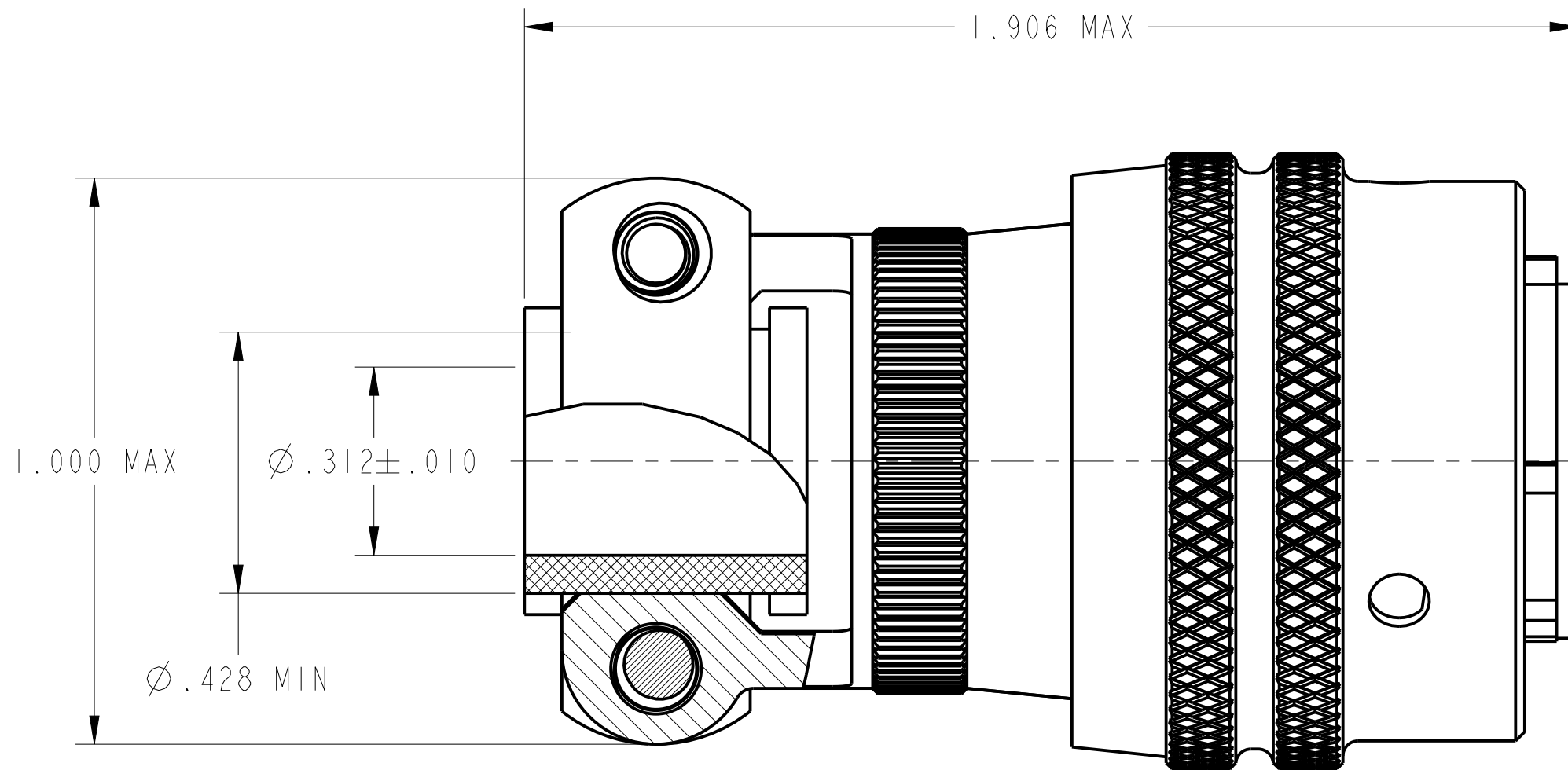


REV. PA1	SHEET 1 OF 1	DOCUMENT NO. PT06E-12-8P(072)(SR)
REVISIONS		
REV	DESCRIPTION	DATE
PA1	INITIAL RELEASE	2019-06-22

# CUSTOMER DRAWING

SOLDER WELL DATA	
CONTACT SIZE	20
WELL DIA	.046 <sup>+0.004</sup> <sub>-.000</sub>
WELL DEPTH	.125 <sup>+0.031</sup> <sub>-.000</sub>



SPECIFICATION	
CURRENT RATE	7.5 Amps
OPERATING VOLTAGE	600 VAC MAX
OPERATING TEMPERATURE	-55 °C TO 125 °C
DIELECTRIC WITHSTANDING VOLTAGE	1500V AC
INSULATION RESISTANCE	5000 MEGOHMS MIN (AT 25 °C)
NUMBER OF CONTACTS	8 PIN
CONTACT RESISTANCE	5 MILLIONHMS MAX
DURABILITY	500 CYCLES
WATERPROOF (mated condition)	IP67 CLASS
SALT SPRY	5%NaCl, 500H
VIBRATION	10-2000Hz, 196m/s <sup>2</sup>

**NOTES:**  
 THE USE OF THIS DOCUMENT IS UNLIMITED. HOWEVER, DOCUMENTS REFERENCED HEREON MAY CONTAIN LIMITED RIGHTS DATA.

N/A	PRO/ENGINEER INFORMATION
N/A	Pro/e Model Used: PT06E-12-10S.ASSEM
NEXT ASSEMBLY	Drawing Name: PT06E-12-8P-072-SR

UNLESS OTHERWISE SPECIFIED	SPECIFICATIONS	POS	QTY	PART NUMBER	DESCRIPTION	NOTE
LINEAR DIMENSIONS ARE IN INCHES TOLERANCES: .XXXX = ±.0005 ANGLES= ±2° .XXX = ±.010 .XX = ±.03 .X = ±.1 DIM. & TOL. PER ASME Y14.5M; DRM PER MIL-DTL-31000; OTHER Amphenol Sds. PER 9-3800 LEGENDS: =FLAG NOTE CALL OUT REFERENCE ONLY	MATERIAL SPEC.	APPROVALS		DATE	PARTS LIST	
	N/A	PREPARED BY Henry He	Jun-22-19	<b>AMPHENOL CORPORATION</b> <small>40-60 DELAWARE AVENUE          SIDNEY, N.Y. 13838</small>		
PROCESS SPEC.	N/A	ENGINEER IN CHARGE Sunny Qin	DESIGN MANAGER Ran Xiao	<b>CONNECTOR, ELECTRICAL, PLUG</b> <b>TYPE PT06E-12-8P(072)(SR)</b> <b>CONDUCTIVE GRAY ZINC NICKEL PLATING</b>		
		THIRD ANGLE PROJECTION		SIZE C	CAGE CODE 77820	DOCUMENT NO. PT06E-12-8P(072)(SR) REV. PA1
				SCALE: 1.0	REF:	SHEET 1 OF 1

DOCUMENT NO. PT06E-12-8P(072)(SR) SHEET 1 OF 1 REV. PA1  
 C B A

D C B A  
 REV. PA1 SHEET 1 OF 1 DOCUMENT NO. PT06E-12-8P(072)(SR)