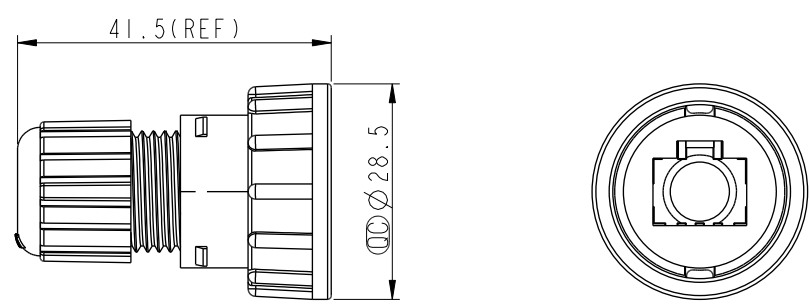
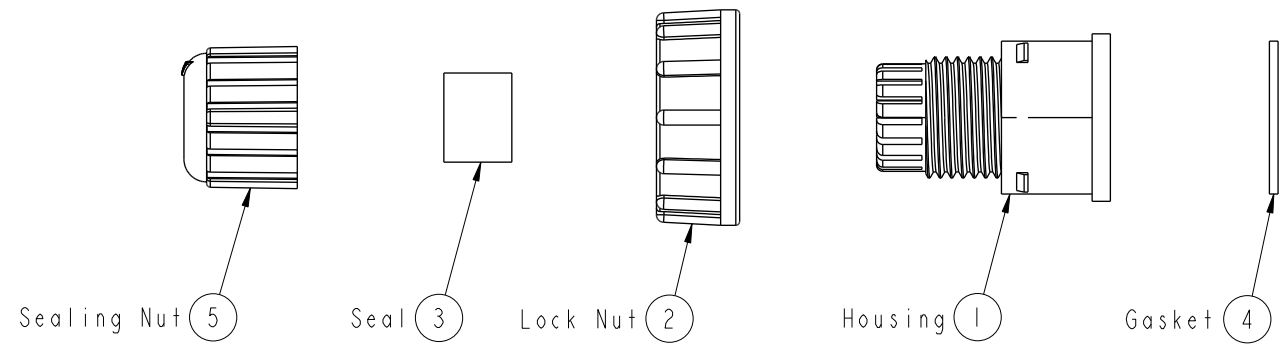


THIS DOCUMENT IS SUBJECT TO CHANGE WITHOUT NOTICE. IT IS CONFIDENTIAL AND A PROPERTY OF AMPHENOL LTW. DISCLOSURE TO THIRD PARTY HAS TO BE AUTHORIZED BY AMPHENOL LTW.

| REV. | ECN NO. | DATE | SIGN | DESCRIPTION |
|------|------------|------------|-------|-------------------------|
| B | LE31490147 | 2014/09/11 | Joyy | Change to 94V0 material |
| C | C201856 | 2020/08/05 | Vicky | △C X2 |
| D | C231296 | 2023/10/11 | Vicky | △D X1 |



- △ Note:
- * ∅ Important Dimension To Check
 - * Waterproof Rate: IP67, Mated
 - △B * Housing: Thermoplastic, Black
 - △B * Lock Nut: Thermoplastic, Black
 - △B * Gasket: Rubber, Gray
 - △B * Sealing Nut: Thermoplastic, Black
 - * Seal: Rubber, Gray
 - * Seal For Cable OD $\varnothing 4.5\text{mm} \sim \varnothing 7.5\text{mm}$
 - △D * One set unassembled in one pe bag

| | | | | |
|---|--|--|--|--------------------|
| UNIT: mm | | | TITLE RJ45 ASSEMBLY LOCK 00 M CONN M PIN | △C |
| TOLERANCE .X ±0.25 .XX ±0.1 .XXX ±0.05 ANGLES ±1° | | | SCALE 1:1 | SIZE A4 |
| | | | REV. D | WC-REV. A.5 |
| | | | | ∅: Inspection item |

Amphenol LTW
安費諾亮泰企業股份有限公司

| | | |
|------------------------------|-----------------------|--------------------|
| ITEM NO. RJ-00BMMA-LL7001 | DRAWN BY Joyy | DATE 2014-09-11 |
| DWG NO. RJ-00BMMA-LL7001 | CHECKED BY Tom | DATE 2014-09-11 |
| CUSTOMER ALTW | APPROVED BY Victor | DATE 2014-09-11 |