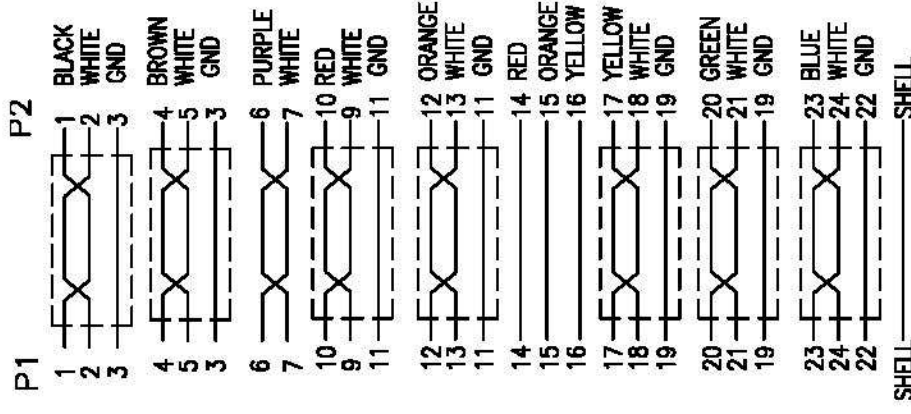


**DVI Male (DVI-D, dual link)**

**DVI Male (DVI-D, dual link)**

**NOTE:**

- 1) PRIMARY DIM: A. C. D.
- 2) DVI-DIGITAL DUAL LINK
- 3) P1&P2 DIE NO. :0H24003
- 4) ROHS & REACH COMPLIANT
- 5) 100% SHORT CIRCUIT TEST
- 6) CONDUCTION RESISTANCE:5Ω(5M ABOVE 10~20Ω)
- 7) INSULATION RESISTANCE:20MΩ
- 8) HI-POT:300V DC
- 9) SWAY TEST: PRODUCT LINE 1.5 SECONDS  
(SEMI-FINISHED PRODUCTS NOT REQUIRED)
- 10) COPPER FOIL 360° RING WELDING



3	OUTER JACKET PVC 45Pa BLACK(1101)
2	DVI 24+1/M BLACK TERMINAL G/F 1U" NICKEL PLATED SHELL
1	UL20276(28#1P+A+D)*7+28#1P+28#3C+A+B(128AM)+D OD:8.6MM BLACK(1101)

<b>SECOMP</b>	
Item no.	11.04.5556
ROLINE DVI Cable, Dual Link M/M, 7.5m, black	
DR. SAN	2015/06/16
SCALE	SHEET 1/1
UNIT	MM
SIZE	A4
REV.	A