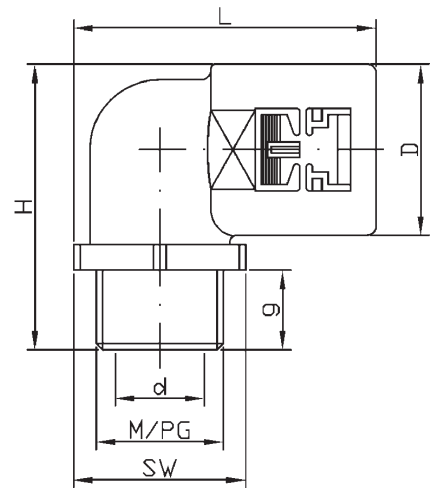
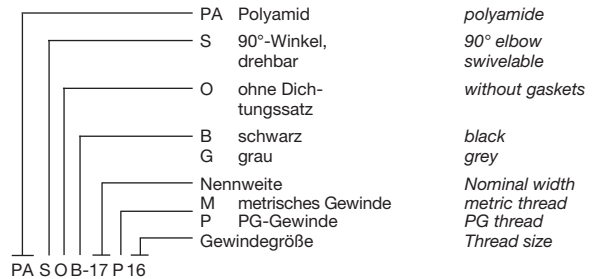


# 90°-Winkelverschraubung mit Außengewinde

## 90° Swivelable elbow

90°-Winkelverschraubung auf beliebige Abgangsrichtung einstellbar, ohne zusätzliche Kontermutter.

90° elbow can be turned in any direction, without additional nut.



### PA S O G / PA S O B, metr.

Bestell-Nr./Article no grau/grey	schwarz/black	für/for NW	M	d	g	D	L	H	SW	kg/100 St. kg/100 pcs.	(VE) St. (PU) pcs.
PA S O G-07M12	PA S O B-07M12	07	12 x 1,5	6,85	9,85	21,5	47,3	42,5	15	0,87	50
PA S O G-07M16	PA S O B-07M16	07	16 x 1,5	7,00	9,85	22,5	47,3	42,5	15	0,89	50
PA S O G-07M20	PA S O B-07M20	07	20 x 1,5	6,95	9,85	24,5	47,3	42,5	15	0,93	50
VP S R G-10M16	VP S R B-10M16	10	16 x 1,5	8,30	9,00	21,1	56,0	37,5	20		50
VP S R G-10M20	VP S R B-10M20	10	20 x 1,5	10,00	9,00	21,1	58,0	37,5	24		50
VP S R G-12M20	VP S R B-12M20	12	20 x 1,5	12,00	9,00	23,9	59,0	41,5	24		50
PA S O G-17M25	PA S O B-17M25	17	25 x 1,5	16,00	10,00	27,0	50,0	45,0	32		50
PA S O G-23M32	PA S O B-23M32	23	32 x 1,5	19,10	11,00	36,0	69,5	55,0	41	3,15	30

### PA S O G / PA S O B, PG

Bestell-Nr./Article no grau/grey	schwarz/black	für/for NW	PG	g	D	L	H	SW	kg/100 St. kg/100 pcs.	(VE) St. (PU) pcs.
PA S O G-07P07	PA S O B-07P07	07	07	8	18,0	44,0	41	15	0,79	50
PA S O G-07P09	PA S O B-07P09	07	09	10	18,5	44,5	43	15	0,81	50
PA S O G-07P11	PA S O B-07P11	07	11	10	22,0	46,0	43	15	0,91	50
PA S O G-07P13	PA S O B-07P13	07	13,5	10	24,0	47,0	43	15	0,95	50
PA S O G-17P16	PA S O B-17P16	17	16	10	27,0	49,0	45	27	1,44	50
PA S O G-23P21	PA S O B-23P21	23	21	11	36,0	65,0	55	32	2,85	30