

ACCESSORIES AND STANDS



PROFESSIONAL STANDS

RK-10A

The Dino-Lite RK-10A is a sturdy and stable high-end stand solution that can be used with all the professional Dino-Lite models.

It is constructed of resilient stainless steel and lightweight aluminum and offers a very precise fine-focus adjustment as well as a quick release function.



RK-06A

The Dino-Lite RK-06A stand is a sturdy and stable mid-range stand solution that can be used with all Dino-Lite digital microscopes. It is constructed of stainless steel and lightweight aluminum and offers precise fine-focus adjustment as well as a quick vertical release function.

 Also available in an ESD-Safe version



RK-06F

The RK-06 but with fine focus adjustment for precise focusing.

RK-06-PL

extension pole to double the height of the RK-06A stand

ACCESSORIES RK-10A & RK-06A

RK-10-VX

Vertical arm extension



RK-10-FX

Flexible arm extension



RK-10-EX

Additional horizontal arm
(included with RK-10A & RK-06A)



RK-10-PX

XY positioning arm extension



PROFESSIONAL STANDS

RK-05

The Dino-Lite RK-05 stand provides a multi-angle view with its 30° inclinable pole feature (tilt and stay). Ideal when you want to observe your sample from a different angle. The RK-05 is a lightweight, portable stand with a one-step assemble/disassemble design.



RK05F

The RK-05 but with fine focus adjustment for precise focusing.



RK-04

Robust, lightweight and compact stand design. The Dino-Lite RK-04 stand is designed with portability and convenience in mind.



RK04F

The RK-04 but with fine focus adjustment for precise focusing.



OTHER STANDS



MS53B

Heavy table top clamp-on jointed stand with a wide working range of 62-92 cm (23-36 inches). It can be easily clamped onto workstation or table top. A table base (MS52BA2) is also available.

MS08B



Compact stand including holder for the Dino-Lite.

MS-W1



Special stand for cylinder surfaces or to roll on flat surfaces.

RK-02

The RK-02 is a durable gooseneck stand. With this sturdy stand, you can easily position the Dino-Lite by bending the 60 cm long arm and adjusting the rotating head.



HOLDERS

HD-P1



Universal holder for Dino-Lite

HD-M1



Aluminium holder for Dino-Lite

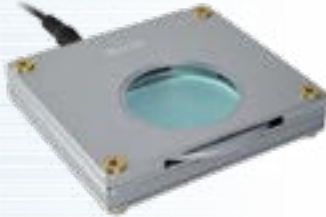
OTHER ACCESSORIES

SW-F1



The SW-F1 allows you to take a picture with a simple step from your foot.

BL-ZW1



Portable Back Light with built-in Polarizer.

N3C-A



The N3C-A coaxial light cap is useful to inspect surfaces such as metal, plastics or glass.

BL-CDW



The Dino-Lite backlight stage BL-CDW allows two different types of lighting: brightfield and darkfield.

KM-01

The KM-01 can be used to control the Dino-Lite focus wheel without touching the device. This is especially useful when the Dino-Lite needs to be isolated during use.



N3C-R

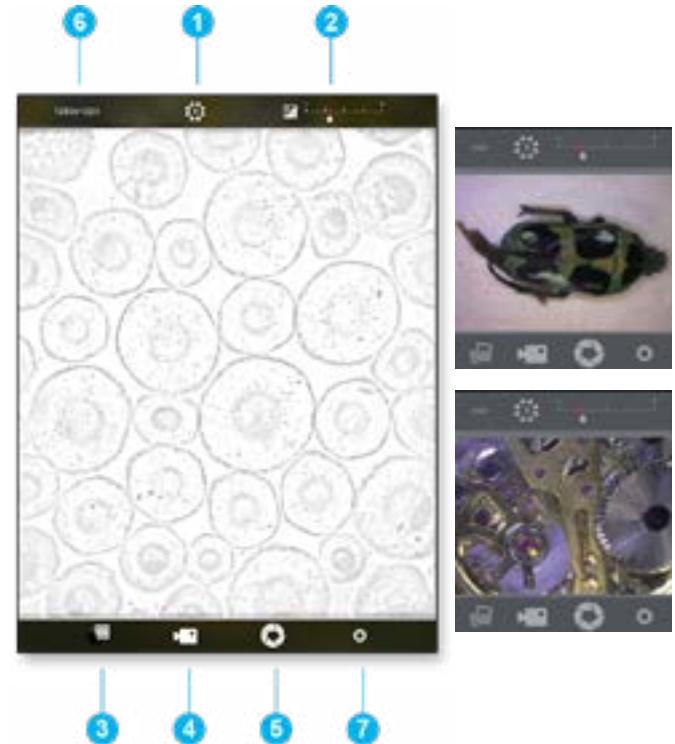
The N3C-R is a passive ring light solution that helps to reveal more details by generating shadow-less illumination.



DINO-LITE WF-10 WIFI STREAMER

Use your Dino-Lite wirelessly with an iPad, iPhone or Android phone or tablet.

DinoConnect:



- 1. LED On/Off
- 2. Exposure Control
- 3. Photos/Videos Folder
- 4. Video Recording
- 5. Photo Capture
- 6. Resolution Setting
- 7. Others

(*The WF-10 is compatible with certain models of Dino-Lite. Please consult your local reseller or Dino-Lite Europe for further information.)

Version 2019/Q4© Dino-Lite Europe/ IDCP B.V. Unauthorized use and/or duplication of this material without express and written permission from us is strictly prohibited.

Dino-Lite Europe is the importer and master distributor for the Dino-Lite products for Europe, Africa and the Middle East. Dino-Lite products are sold by hundreds of local partners, please check www.dino-lite.eu/wheretobuy for the best reseller in your region.

Dino-Lite Europe/ IDCP B.V.
Manuscriptstraat 12-14
1321 NN Almere
+31 (0) 20 6186322
info@dino-lite.eu
www.dino-lite.eu

Dino-Lite
Digital Microscope
The Industry Standard