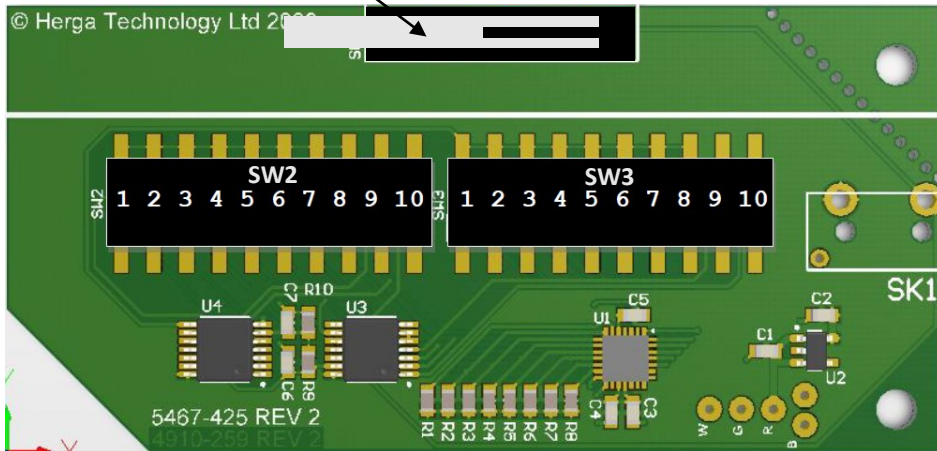


Before replacing the footswitch lid test the required keystroke function .This is done by plugging the footswitch into a USB port on the PC then pressing the lever on the microswitch SW1



### Specifications:

Power : 5V @ 25 mA  
Working temperature : 10~ 60°C  
Weight : 395g  
Moulded Glass filled nylon plastic construction  
Sealed to IPX2  
USB HID Compliant ( No software drivers required )

**Herga Technology Ltd.,  
Northern Way, Bury St. Edmunds, Suffolk, IP32 6NN  
England**

Tel +44 (0) 1284 701422 Fax +44 (0) 1284 753112  
e-mail sales@herga.com

## Installation Instructions for USB 2.0 Footswitch



The Herga USB footswitch is programmed by the user to simulate up to four simultaneous keystrokes .No software installation is required as it will be recognised by the Operating system once plugged into a USB socket .

Programming is done simply by setting small switches inside the footswitch having removed the cover. (See pages 2 and 3)

### Features:

Works with the following OS : All Windows ,Linux and Mac OS variants  
(ie No driver software needs to be installed)

CTRL , ALT , SHIFT plus one more key may be emulated simultaneously.

Third party tested USB 2.0 Compliant.

Cable length 2.5M

Contact herga if longer cables up to 5m are required.

5604-214 Issue 02 21/12/20 Page 1  
DCR:18487



## Setting the Footswitch Function

Release the two hinge screws with a screwdriver turning them a quarter turn and removing them.

The lid will then come away revealing the switches .

Find the Key (or combination of keys ) you require on the tables below and set Switch 2 or Switch 3 accordingly.

For test purposes the footswitch is supplied with the switches set to the character 'a'

Key	SW2	SW3	Key	SW2	SW3
A	3	2	1 (!)	8	2
B	6	1	2 (" )	8	3
C	5	3	3 (#)	8	4
D	3	4	4 (\$)	8	5
E	1	4	5 (%)	7	5
F	3	5	6 (^)	7	6
G	4	5	7 (&)	8	6
H	4	6	8 (*)	8	7
I	1	7	9 ( ( )	7	1
J	3	6	0 ( ) )	6	8
K	3	7			
L	3	8	<b>ESC</b>	4	2
M	5	6	` ~	4	1
N	6	2	<b>TAB</b>	2	2
O	1	8	Caps Lock	9,4	7
P	2	3	Win	4	4
Q	1	2	Space	9,4	1
R	1	5	/ ?	9,6	2
S	3	3	[ {	9,2	4
T	2	5	] }	2	7
U	1	6	: ;	9,3	4
V	5	4	~ #	9,1	3
W	1	3	. >	5	8
X	5	2	, <	5	7
Y	2	6	_ -	9,3	8
Z	5	1	= +	9,4	6
			\	7	2
<b>CTRL</b>	10		<b>Backspace</b>	9,2	2
<b>ALT</b>		10	' @	9,4	3
<b>SHIFT</b>		9	<b>Enter</b>	9,5	2

Key	SW2	SW3	Key	SW2	SW3
F1	7	3	Num Lock	9,5	1
F2	7	4	Num 1	9,3	1
F3	2	4	Num 2	9,2	3
F4	4	8	Num 3	9,3	5
F5	8	1	Num 4	9,2	1
F6	4	7	Num 5	9,1	5
F7	2	8	Num 6	9,2	6
F8	7	8	Num 7	9,1	2
F9	9,7	2	Num 8	9,1	6
F10	9,8	2	Num 9	9,3	3
F11	9,4	2	Num 0	9,3	2
F12	9,6	1	Num .	9,2	5
F13	9,6	3	Num +	9,1	7
F14	9,6	4	Num -	9,5	8
F15	9,6	5	Num *	9,5	7
F16	9,7	3	Num /	9,5	6
F17	9,7	4	Num Enter	9,5	3
F18	9,7	5			
F19	9,8	3	↑	6	5
F20	9,8	4	↓	6	7
			→	6	4
			←	6	3
<b>Print Scrn</b>	9,8	1			
<b>Scroll</b>	9,1	4			
<b>Pause</b>	9,4	5			
<b>Insert</b>	9,2	8			
<b>Home</b>	9,1	8			
<b>Page Up</b>	9,3	6	<b>Mouse</b>	<b>SW2</b>	<b>SW3</b>
<b>Delete</b>	9,7	1	Left click	2	1
<b>End</b>	9,2	7	Right Click	3	1
<b>Page Down</b>	9,3	7	Middle Click	4	3