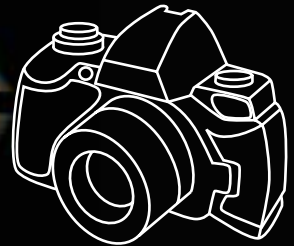
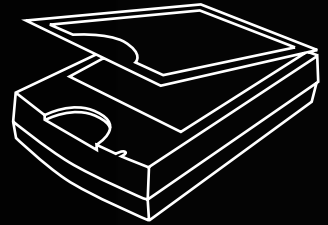


# *SilverFast*<sup>®</sup>

## *Quick Start Manual*

6



48  
Bit

**LaserSoft** Imaging<sup>™</sup>

English





## Dear SilverFast User



*SilverFastAi* is now in its seventh year after its introduction in 1995. By now *SilverFast* has received so much recognition world-wide that some already call *SilverFast* “*The Standard*” for scan software. That is a great compliment but nothing we intend to rest upon!

*SilverFast* has made professional colour scanning truly manageable and results predictable. Significant inventions have paved our way to the new powerful *SilverFast 6*, such as the unique *Unsharp-Masking* and *Focus Preview*, *Plug & Play CMYK*, the easy yet powerful *Selective*

*Colour Correction*, *NegaFix*® for optimum negative film conversion, *HiRePP*® for fastest loading of largest image files and now in *SilverFast 6* with *SC2G*®, *Intelligent Colour to Gray* conversion, *Enhanced Selective Colour Correction* with layers and masking and *SilverFastSRD*®, (*Smart Removal of Defects*) unique software based dust and scratch removal.

With *SilverFastAi 6* you will also see the advent of the first *SilverFastAi Quick-Time* movies, exemplifying the powerful functions built into *SilverFast 6* demonstrating how easy these tools can be used.

We are currently at a *threshold of unique changes* in the world. Imaging is becoming the premier and most significant technology as a *translator* between the human being's mind and the outside world. It is indeed the *form-structuring character* of the evolution, that is bringing isolated bits and pieces together into a meaningful intelligent wholeness, being recognized by us as an image.

When the ancient Veda says: “*Knowledge is structured in consciousness*,” it is where we become aware of meaningful items, which are images and thereby structuring knowledge in our consciousness. Science has recognized the *i maging character* of our brain as the source of our intelligence and the seat of consciousness. As Imaging developers we are proud at *LaserSoft Imaging* to be adding at little piece to the exciting global enfoldment of the potential of consciousness.

Karl-Heinz Zahorsky

President and Founder  
LaserSoft Imaging AG

Kiel, August 2002

## SilverFast Installation

Insert your *SilverFast* installation-CD into your CD drive. The CD will open automatically. Under “Language” select your language. A dialogue with several choices comes up.

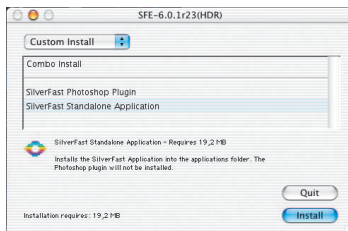
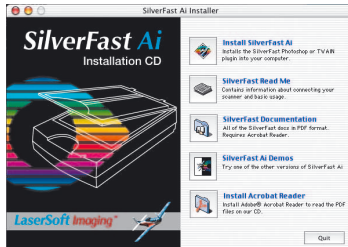
- Under “*SilverFast* Installation ...” you will define, whether you install the *SilverFast* Photoshop-Plugin (Mac and Win) or the Twain-Module (Windows only)

With “Easy Install” the *SilverFast* Photoshop-Plugin will be installed two times. First directly into Adobe Photoshop and secondly together with “*SF Launcher*”, enabling *SilverFast* to run as Stand-Alone program (Mac and Windows).

With „Custom Install” you will decide, whether you want *SilverFast* twice installed or only with “*SF Launcher*” or only for Photoshop.

For safe install please follow the recommended steps from the installer.

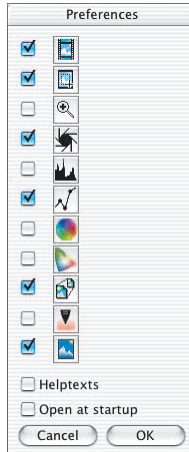
- You will find up-to-date information under “*SilverFast* ReadMe” which might not have been include at printing time of the booklet.
- “*SilverFast* Documentation” features the complete *SilverFast* manual, manuals for optional features, as well as Acrobat Reader software to view the manuals.
- “*SilverFast*.Ai Demos” is a link to our website, allowing you to try download fully funtional demos of our latest *SilverFast*.Ai versions.



## ScanPilot®

The first time you start *SilverFast*, you will be greeted by the *ScanPilot*. If you press the start-button, the scan pilot will guide you through the various tools of *SilverFast* in the recommended order. This way you'll easily get accustomed to our recommended workflow. The steps are: pre-scan, frame selection (cropping), automatic adjustment, graduation correction, size adjustment and scaling. After these steps the scan process is finished.

You can stop the *ScanPilot* any time by pressing the stop-button. At this point, you can use the *SilverFast* tools manually.



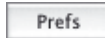
By pressing the “Prefs”-button you can expand the tools-list used by the *ScanPilot*. Click the check boxes beside the desired tool. The *ScanPilot* guides you through the professional steps to achieve best quality. You will find a tools description in this Quickstart and in the manual on CD.



Starting the *ScanPilot*



Stopping the *ScanPilot*



## SilverFast Help

Whenever you move the mouse over an icon in *SilverFast*, you will get a brief explanation at the bottom of the pre-scan window.

You can also use the question mark-icon at the upper left corner of the pre-scan window in order to access the *SilverFast* Help. This will lead you to more in-depth manuals, or short quicktime movies.

Extensive information about all functions of *SilverFast* can be found in the full manual. This manual is available in pdf-format on the *SilverFast*-CD.

The most current information about *SilverFast* can be found on our website:

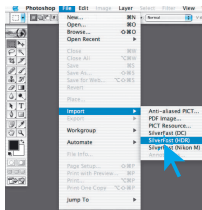
<http://www.silverfast.com/highlights/en.html>

Instructional Quicktime movies are also available there.

## Quickstart

### 1. Start *SilverFast*

Start from Photoshop: Start Photoshop and select your scanner “*SilverFast...*” under “Import” under the “File“-menu (Windows: “File“-Menu).



Start from *SF Launcher*: Start *SF Launcher* by double-clicking the application.

Under “Plugins” select the appropriate *SilverFast* Version (in this example “*SilverFastHDR*” and click “Import”. *SilverFast* will start as usual.



### 2. Serialization

The main scan dialogue comes up with the Serialization dialogue, where you input your first name, last name, company and the serial number. Be sure to input numbers without spaces and letters as capitals. Ensure the number has only zeros, not “O”-letters, inside. Click “OK” when done.

First Name:

Last Name:

Organisation:

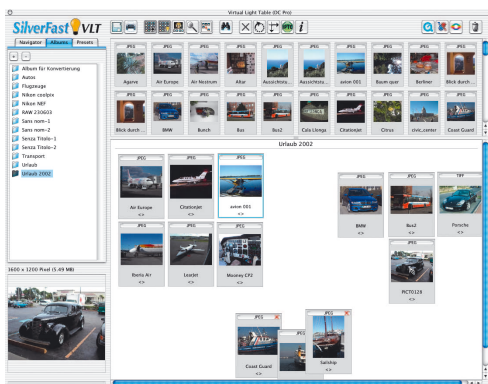
Serial number:

To work in demo mode, press 'Cancel'.

### 3. “Prescan” (*SilverFastAi*) / “Open” (*SilverFastDC*, -HDR, -PhotoCD)



If you use *SilverFastAi* connected to a scanner, click onto the “Prescan” button to launch the prescan. Adjust your frame by dragging the selection marquee over the image accordingly. Make sure the marquee frame is inside the actual image area itself.



Only if you use *SilverFastDC* for processing previously saved image files (e.g. of a digital camera), the *VLT* (virtual light table) opens after you start *SilverFast*.

Once the *VLT* is shown, you can choose the desired images file directories using the Navigator Panel. In addition to files on your computer, images from a digital camera connected to your computer can also be loaded in the *VLT*. Images can be selected and copied from the Overview work area of the *VLT* to the Album work area using the “Drag and Drop” feature. Additionally, images in the Album can be sorted, the file names can be changed, comments can be added, images can be rotated, etc....

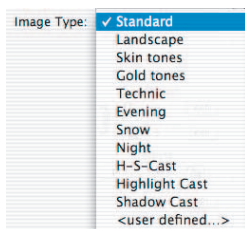
The thumbnails' height can be individually adjusted for the Overview, Album and Magnifying Glass windows. The magnifying glass window always shows the area of the image corresponding to the position of the mouse pointer. In the Album Panel, you can move and organize images in different Albums. The contents of an album or the overview window can also be printed as info sheet.

Double clicking on an image in the album will transfer you directly to the *SilverFastDC* main window. This then permits you to optimize the image using all of *SilverFast's* tools. Once the desired image corrections and enhancements are chosen, you can click on the edit button and the new optimized image file is saved back into the album. The processed image is identified with a green “LED.”

Using the “Drag and Drop” feature, you can transmit large image collections to the integrated “*JobManager*”. The “*JobManager*” in turn allows you optimize images in a very short time.

## 4

### 4. Image Type / Auto-Adjust



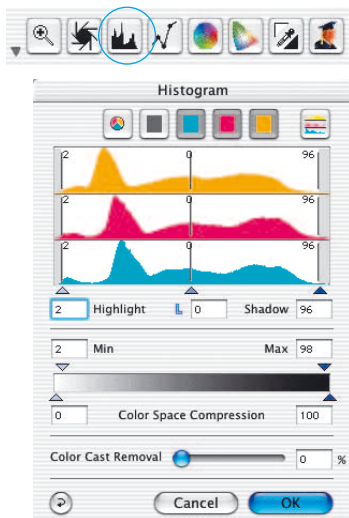
Under “Image Type”, make the appropriate selection to configure the “Auto-Adjust”, so the automatic image control knows how to optimise the image. Immediately after the selection of an Image Type, the Auto-Adjust is applied automatically (notice how your image is optimised).



If you do not change “Image Type” selection you can press the Auto-Adjust icon in the tool bar to optimise the image. You'll soon notice how highlights, shadows and midtones are automatically corrected.

If you do not change “Image Type” selection you can press the Auto-Adjust icon in the tool bar to optimise the image. You'll soon notice how highlights, shadows and midtones are automatically corrected.

## 5. Histogram



In the histogram you can change the highlights (white point), the midtones and the shadows (black point) by dragging with the mouse on the small movable triangles.

The respective values can be monitored with the input fields below and also with the gray scale bar.

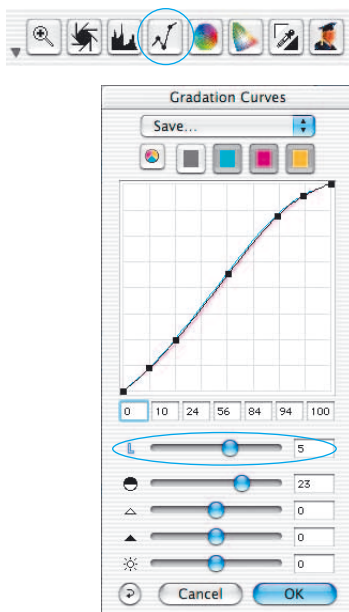
You can switch the midtone characteristic by toggling to “L” or “N” (L = logarithmic and N = linear).

Professional users can use the input fields and movable triangles “Min” and “Max” to adjust highlight- and shadow values.

The “Colour Space Compression” can also be freely adjusted with the small movable triangles.

Colour casts which may possibly be there in the image can be reduced with the slider at the bottom of the dialogue.

## 6. Correcting Brightness



If the image looks too bright or too dark you can open the “Gradation Dialogue” from the tool bar. Use the midtone slider to correct the overall brightness of your image.

Use the second slider to correct the contrast.

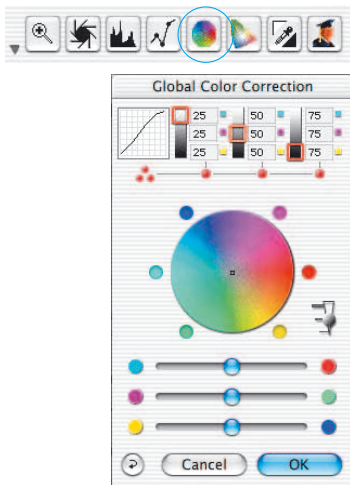
Sliders for highlights, shadows and brightness which allow further corrections, should be carefully used. Wrong settings can immediately lead to loss of tonal range, hence, to loss of image details.

Individual corrections can also be achieved by directly moving gradation points on the curve or inputting values into the input fields for gradation points accordingly.

Gradation curves can be saved as well as previously saved curves can be loaded here.

Any correction that you perform can easily be undone by typing “Command-Z” and redone by typing “Command-Z” again (“Ctrl-Z” on a Windows PC, respectively). In fact, you can toggle between the two.





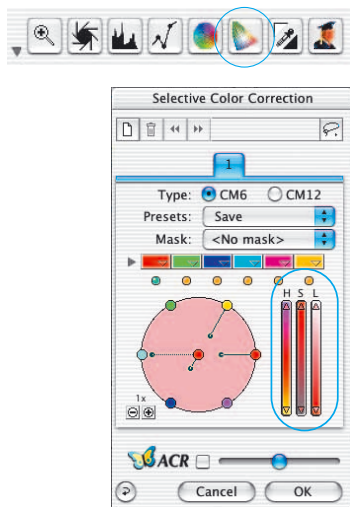
## 7. Global Colour Correction

In this dialogue, you can change the entire colour rendering of the scanned artwork.

By clicking or click dragging within the colour sphere, the colour characteristic of the scanned artwork will be moved into the selected area.

Three slider below the colour wheel do allow comfortable global corrections by moving between each of the complementary colours.

The degree of changes can be adjusted by means of the three-step slider. The lower level will produce small changes. The upper level will produce large changes.



## 8. Selective Colour Correction

Open the Selective Colour Correction from the tool bar and click into your image on the coloured object you wish to correct. SilverFast recognises the colour and sets the colour in the centre of the colour circle accordingly.

By clicking into the top or the bottom of the HSB-Controls and holding the mouse button down, you can change the Hue, Saturation or Luminance of the colour selected.

HSB-Correction allows easy colour control. You can get more sophisticated control by typing numbers into the cells of the Colour Matrix or by selecting



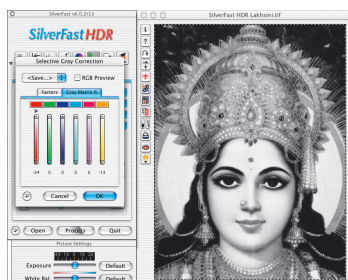
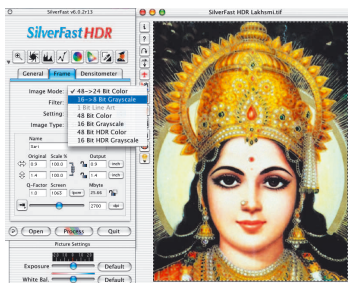
presets from the pop-up menus in the top colour patches of the matrix.

You can also use the Colour Circle to make corrections. Up to six corrections (for each of the RGBCMY colours) can be made at a time.

You can do complex corrections, only related to certain image regions, easily with layers and freely drawn masks.

“ACR” (Adaptive Colour Restoration) when checked, is a new powerful function to correct image saturation, if too much or too little automatically. The slider allows you to adjust the saturation automatic.





## 9. Selective Colour to Grey Conversion (SC2G)

SC2G serves to selectively converting primary- and secondary colours into shades of grey.

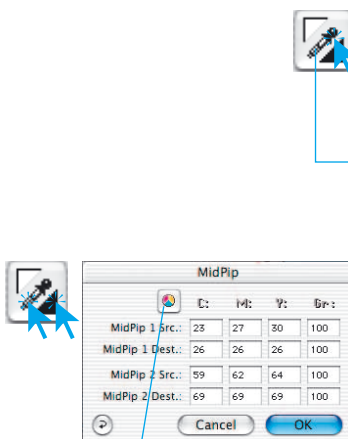
Under "Image mode" you switch from colour to grey mode. Clicking onto the button

"Selective Colour Correction" opens the SC2G-dialogue. Clicking onto a shade you want to change will select the appropriate colour in the SC2G-dialogue. Colour triangles above the colour to gray controls indicate the colour effected more visibly. Press the small top or bottom triangles on the controls. The top triangle will increase the brightness, the bottom triangle will decrease the brightness of a shade.



## 10. Multiple Neutralising Pipette (MidPip4)

MidPip4 (Advanced Colour Cast Removal) allows removal of colour casts comfortably, which e.g. result from a mixed light situation.



**CMY <> RGB Switch**  
Conversion of values measured from RGB to CMY and vice versa.

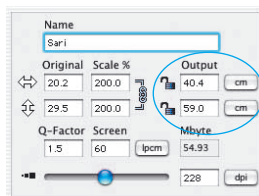
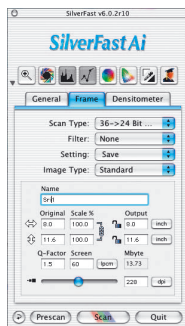


If you want to set several neutral points at once, click onto the pipette and hold the "Option"-key while setting up to four neutral points. The pipette will remain as a cursor until you either click the pipette again or you have set the fourth neutral point!

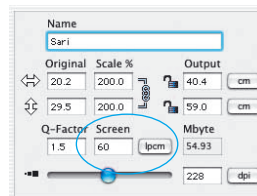
In order to fine tune a neutral point, double-click onto the pipette tool and the Midpip dialogue window will appear. The value fields show the "Before-After"-RGB- or CMY-values of all neutral points. They are fully editable. SilverFast version 6 offers the possibility of the most sophisticated colour cast corrections!

## 11. Image Dimensions

Set your image dimensions, such as output size and printing screen, as desired.

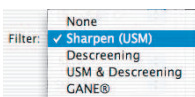


Setting the output size



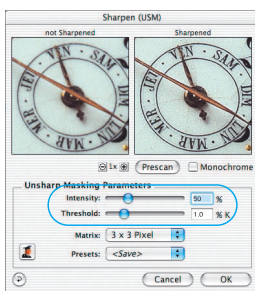
Setting the printing screen

## 12. Defining Unsharp Masking

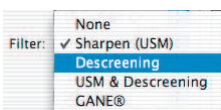


Under “Filter”, select “Unsharp Masking” to define the sharpness of your image. Since sharpness is related to image scaling and resolution, make sure you have set output size and output screen of your scan before setting Unsharp Masking.

To view the sharpness of the final scan, click on “Prescan” and click into the area of interest in your image. *SilverFast* commands the scanner to pick up the selected portion from the image to judge the sharpness effect. You can change any of the Unsharp Masking parameters and view the effect on the image immediately.



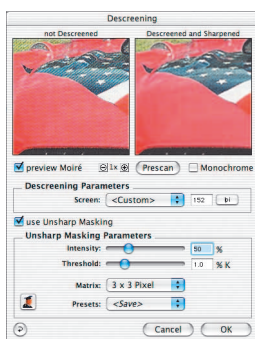
## 13. Removing the Screen from Printed Artwork



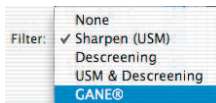
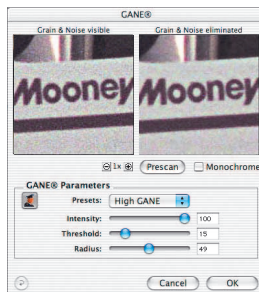
This function is only available with scanner plug-in modules, but not with *SilverFastDC*. To scan artwork done with offset printing, as for example from a magazine, the scans have to be “descreened.” First, select the function “descreen” in “Filter.”

The screen size of the artwork to be screened will appear in the opened window: either manually by number entry, or above the menu with the presets. With “Prescan” you can just the same as with Unsharp Masking, get a 1:1 preview with “Before-After-Images” and easily check the parameters set accordingly.

If you have selected “Descreening with USM”, the combined effect can be monitored.



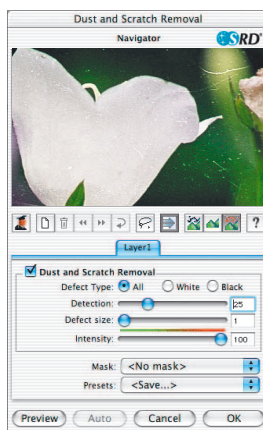
## 14. Grain- and Noise Removal (GANE)



The reduction of grain pattern and noise can be monitored in *SilverFast*'s "Before-After-Preview" and enables a secure judgement of the final results.

The intensity of the GANE filter can be easily controlled by the user with a drop-down list of presets. Additional sliders available in the expert mode enable a finer tuning to achieve the best possible result. The expert mode is only available in *SilverFast* full versions.

## 15. Dust and Scratch Removal (*SilverFast* SRD)



After starting *SilverFast* SRD click "Prescan" to generate a new preview scan with the current resolution set in order to show all artifacts.

The "Auto"-button tells *SilverFast* to find the best presets possible. The settings found can be optimised further.

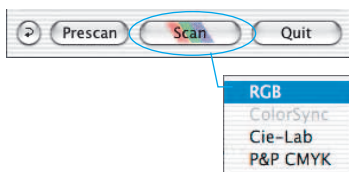
At first select "Defect Type" and switch to "artifacts highlighted"-mode. All artifacts found will be highlighted in red colour.

You can now correct the auto settings found with the sliders "Detection" and "Defect Size". You should leave "Intensity" for the time being on "100"!

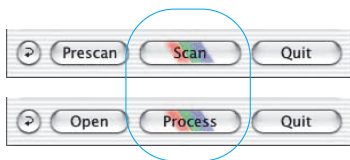
With the slider "Intensity" reduce the number of details recognized which are not artifacts (Value: < 100).

Check the overall results by selecting other image areas with the Navigator and switching the monitor modes. In order to eliminate large artifacts or scratches only in certain areas of the image, use the mask function. For complex artefacts working with "levels" is recommended. Clicking "OK" will apply the parameters set and the dialog will be closed.

## 16. Select the Colour Model



By pressing the "command" key and clicking the "Scan" button a pop-up allows you to select the output colour model (PC users click with the right mouse button on Scan RGB key): RGB, ColorSync, Cie-Lab, P&P CMYK. After the selection is done, the scan button changes accordingly. Default is "Scan RGB".



## 17. Scan / Processing

In order to start scan or processing, click on “Scan-” or. “Process”-button and the scan into the image application or to disk will start.

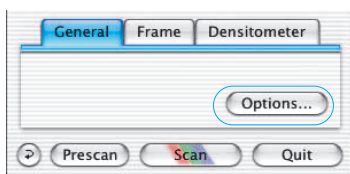
For further options such as batch scanning, look up the main manual PDF on the CD.



## 18. Reset / General Reset

In order to reset the correction within the active scan frame, click the “Reset”-button in the *SilverFast*-dialogue window.

In order to reset all *SilverFast* correction settings, press the “Shift” key and click on the “Reset-All”-button in the *SilverFast*-dialogue window.



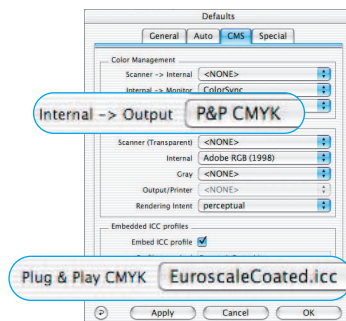
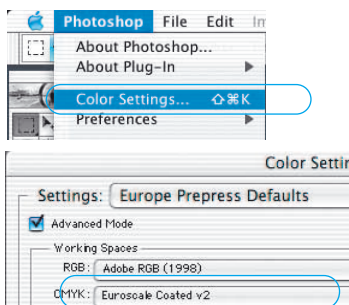
## 19. Plug&Play CMYK

If you want to use “Plug&Play CMYK” output, make sure a colour separation profile e.g. “Eurostandard coated.icc” is loaded within *SilverFast*.

If the “Plug&Play CMYK” menu choice is grey so you cannot select it, choose a separation profile under the “Plug&Play CMYK” menu in the “Options...”-dialogue window.

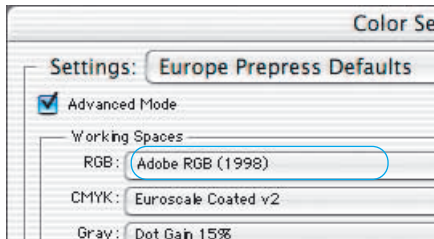
## Attention!

To work accurately, select the same “Separation profiles” or “CMYK-ICC profiles” or “Output RGB profiles for RGB printers” in Photoshop and in *SilverFast*.



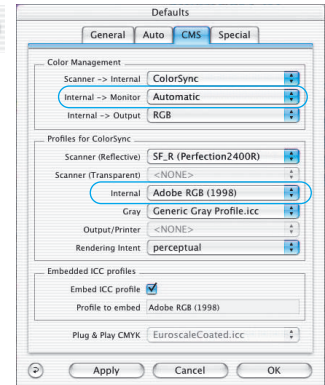
## Colour management

Basic set up for correct matching of colours between Photoshop and SilverFast. Ideally, the viewed colour of the screen image should be the identical for SilverFast and Photoshop. However, that can only happen when an identical working color palette is used in both programs. If a self defined working color palette is used, it should first be copied into the system folder containing ColorSync profiles (Windows: ICM profiles). You will find detailed information on our web-site: [www.silverfast.com](http://www.silverfast.com) and in our manual.



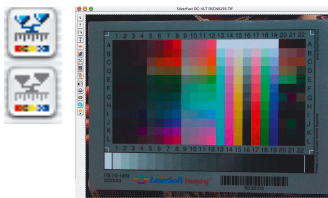
### Photoshop

The set up of a working color palette is done in "file / color set up / RGB". Here, for example, "Apple RGB". A self defined working color palette can be saved in the dialogue.



### SilverFast Ai

The set up for a working colour palette is done in "Options... / CMS (Win: ICM)" at color management / Internal>Monitor" and "Profiles for ColorSync / Internal".



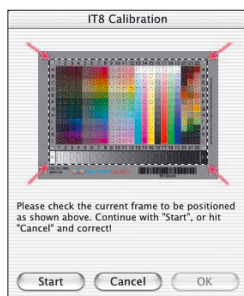
## Calibrating your scanner with SilverFast IT8 calibration

IT8 target calibration is the industry standard for calibrating input devices. Now SilverFast has integrated (optional) a professional tool for calibration and for the creation of ICC profiles to be used with Apple's ColorSync 3 or under Windows with ICM 2.0. To order this upgrade, contact *LaserSoft Imaging AG*.

SilverFast has made the process of IT8 calibration very convenient – all steps are performed automatically by the software, just follow the instructions outlined below.

- 1 Position the IT8 reference chart on your scanner bed.  
Make sure that the IT8 target is positioned straight within the normal scan area, preferably where the scan starts. Avoid those areas which are reserved for scanner internal calibration. The orientation of the target should be as shown on the right.
- 2 Click "prescan" (the scanner performs a prescan).
- 3 Now click the IT8 calibration button.





## 4 The window "IT8-calibration" pops up

The preview window and the grid will open. Position the grid in such a way, that all edges are precisely covering the IT8 target.



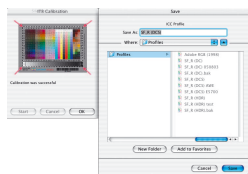
## 5 Start the calibration

If the frame is correctly set up, the calibration can commence by clicking the "Start" button. *SilverFast* will now search for the respective reference file for the chosen IT8 target.

## 6 Identifying the IT9 target and searching for the correct reference data file.

*SilverFast* locates the reference data file on its own: This usually happens very quickly and runs automatically; the IT8 target is identified by the barcode on its front. *SilverFast* then searches for the respective reference data file, and then launches the calibration.

*SilverFast* cannot find the reference data file: In case no matching reference file is found, an options dialog is opened. This may occur if the user has chosen a non *LaserSoft Imaging* IT8 target which does not contain barcodes. In this case, please locate the matching reference file manually. Make sure to choose the right file: there is one reference file for reflective and one for transparency mode. The reference data file contains the exact spectro-photometric values of your IT8 target.



## 7 Saving the ICC profile

After the calibration has been completed you will get the message "Calibration has been successful".

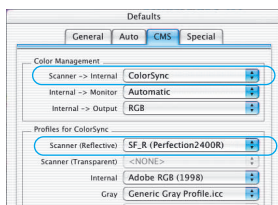
You'll then have the option to save the result of the calibration as an ICC-profile for system-wide colour management. Name and location of the profile can be selected by the user.



## 8 Calibration is now active. The IT8 calibration button is now coloured and not longer grey.

### Attention!

For a subsequent activation of the calibration, please choose the following Color Management settings:

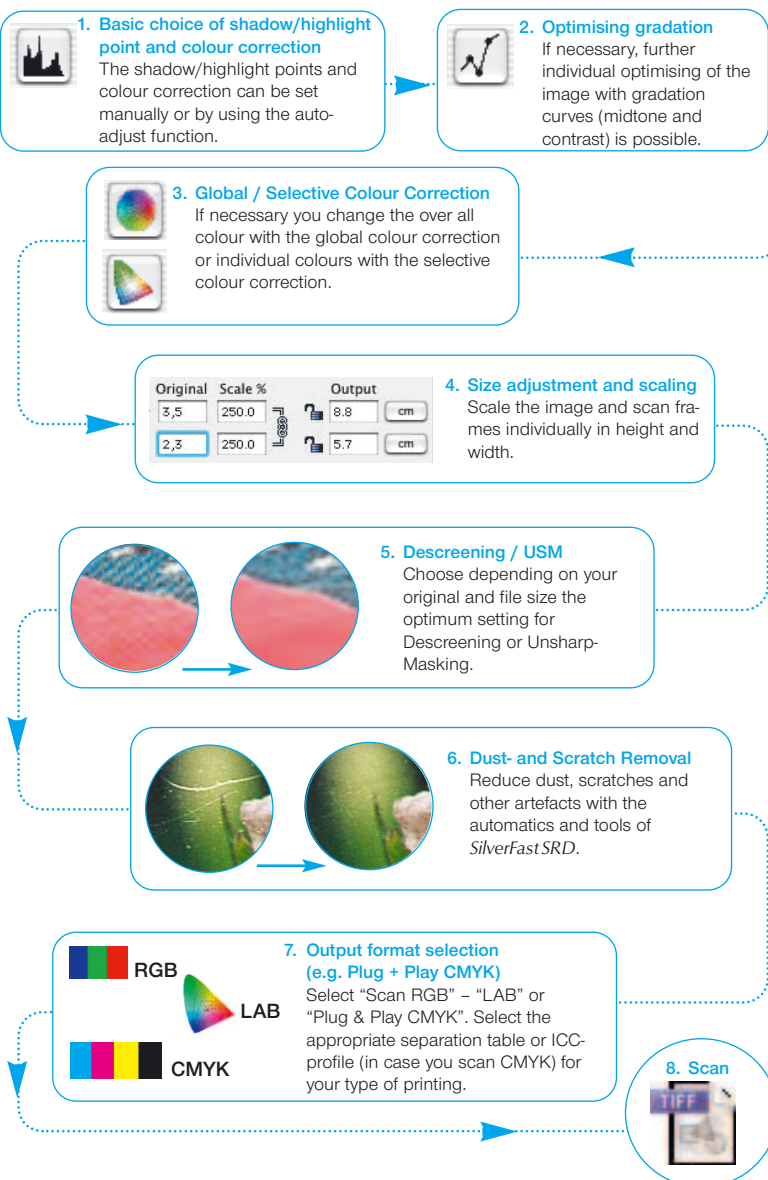


Choose the option "ColorSync"(Windows "ICM") in the "Scanner-> internal" menu. After this, choose the correct calibration profiles for both transparent and reflective images. After clicking the "OK" box of the CMS dialog, the IT8 Calibration is activated.

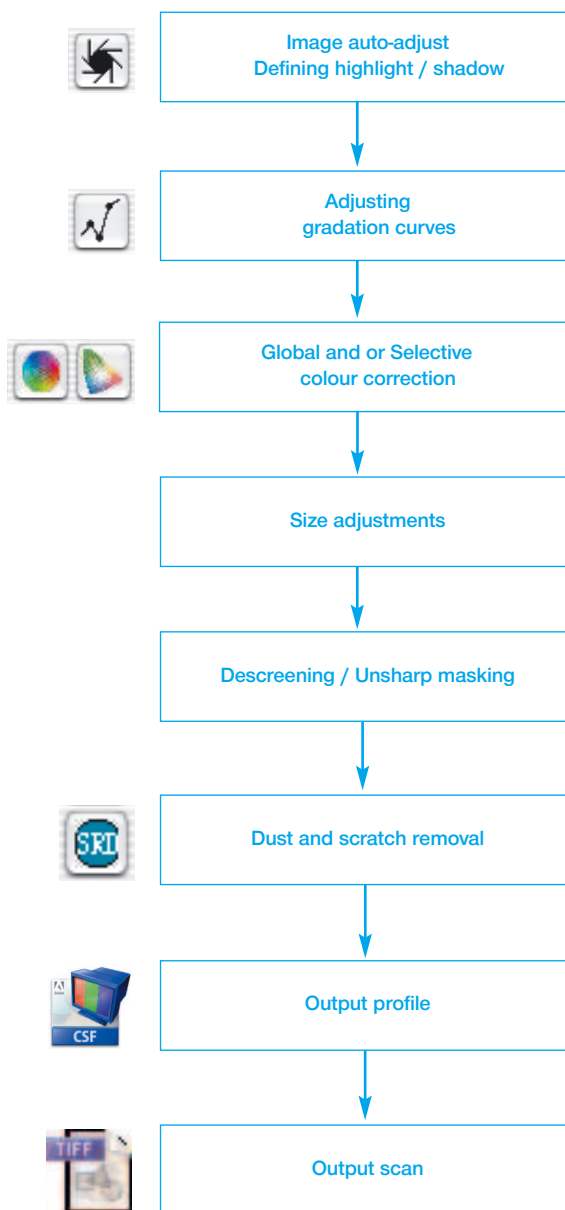


## The concept of optimising images

When optimising scanned images, using the tools in the correct order significantly influences the results that can be obtained and leads to the optimum output quality.



## Workflow of optimising images





## Options\*

Before you start working with *SilverFast*, please set important preferences under the "Options..." dialogue. These preferences will be automatically incorporated into any future scans performed.

**\* Attention:** The "default dialogue" windows differs from scanner to scanner and some features are only available for certain scanners or certain imaging software. The following parameters are set:

The brief instructions below outline the most important pre-settings. A complete explanation of all functions can be found in the general *SilverFast* manual.

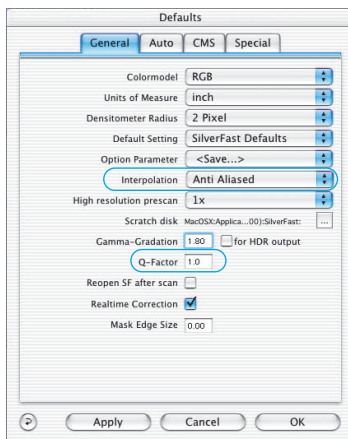
## General defaults

### • Interpolation

Switching between standard interpolation and the higher-order antialiasing interpolation.

### • Q-factor

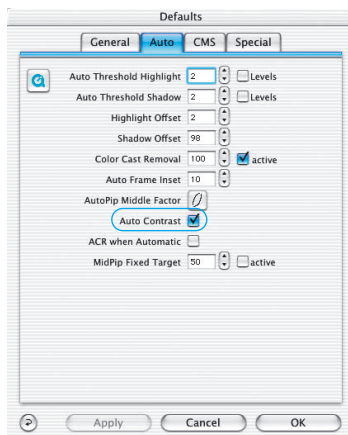
The Q-factor is the quality factor for an image. The range is from 1 to 2.5. Please refer to manual addendum (Calculating the scan resolution).

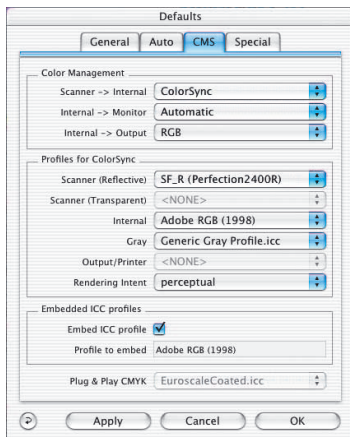


## Auto defaults\*

### • Auto Contrast

The best contrast setting of the picture viewed is automatically chosen upon activation.





## CMS (Colour management) defaults\*

### Colour Management

#### • CMS Scanner > Internal

Here the preferred model for correcting the colour deviations of the current scanner can be selected. The choice is between “none” and “ColorSync” calibration.

#### • CMS Internal > Monitor

Here the matching from the internal colour space of *SilverFast* to the current monitor is being defined. “None!” is if the user does not want any matching. “Automatic” is for Photoshop. (Please check the internal ICC profile set in *SilverFast* should be the same as the one allocated in Photoshop's internal colour space). “ColorSync” is for those applications that do not supply matching from inside the application but the user does want colour matching.

#### • CMS Internal > Output

The preferred system for defining the output colour space generation can be chosen here. Select “RGB” for no output matching. “ColorSync” if you want ColorSync to do the output matching. “Cie-LAB” if you want to generate device independent colour space. “P&P CMYK” for *SilverFast*'s own powerful separation to CMYK with Photoshop matching.

### Profiles for ColorSync

#### • Scanner (Reflective)\*

ColorSync profile for the reflective unit of the scanner.

#### • Scanner (Transparency)\*

ColorSync profile for the transparency unit of the scanner.

#### • Internal

ColorSync profile for the internal colour space.

#### • Output / Printer

ColorSync profile for the printer.

#### • Embed ICC profiles



This option enables the user to pass the image data to an application which would do automatic matching with the embedded profile. When a TIFF-file is generated from *SilverFast* the ICC-profile is embedded into the TIFF data.

### Plug + Play CMYK



The ICC-profile Plug&Play CMYK separation is chosen here.

## Keyboard Shortcuts Mac


### ScanPilot

Apply / execute current tool ..... **RETURN**  
 Scroll ..... Button  or 

### PreScan / Scan

Stop prescan / stop scan .....  +   
 Switch between colour spaces ..... **CTRL** + click on scan button



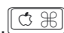
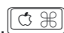
### Frames

Duplicate frame ..... **ALT** + click  
 Set frame to full scan size .....  + **A**  
 Delete frame (extended keyboard) ..... **DEL**  
 Delete frame (normal keyboard) ..... **ALT** + **BACKSPACE**  
 Frame reset ..... click on "Reset"-button

### Auto-adjust

Resetting auto-adjust ..... **ALT** + click onto 

### Highlight / shadow tools

Set highlight ..... white triangle   
 Set midton ..... pipette   
 Set shadow ..... black triangle   
 Multiple attempts with a tool ..... hold down **ALT**  
 Reset highlight / shadow ..... **ALT** +   
 Display brightest point .....  + **SHIFT**  
 Display darkest point .....  + **CONTROL**

### Masks in SilverFast SRD

Hide Mask Marquee ..... **CONTROL**  
 Darken inactive Mask area ..... **ALT** + **CONTROL**  
 Subtract from Mask ..... **ALT**  
 Add to Mask ..... **SHIFT**

## Histogram

Show result histogram ..... **[ALT]** in the histogram-dialog

## Selective colour correction

Select all colours ..... **[⌘]** + **[A]**

Select additional colour ..... **[SHIFT]** + click in prescan  
or **[SHIFT]** + click on LED below column

Show inactive mask area ..... **[⌘]** + **[ALT]**

## Reset

Reset all parameters ..... **[SHIFT]** + click on “Reset”-button

Frame reset ..... click on Reset”-button

Undo / redo last operation ..... **[⌘]** + **[Z]**

## Opening a dialog window

Zoom in preview ..... **[⌘]** + **[1]**

Image auto-adjust ..... **[⌘]** + **[2]**

Histogram dialog ..... **[⌘]** + **[3]**

Gradation dialog ..... **[⌘]** + **[4]**

Global correction ..... **[⌘]** + **[5]**

Selective colour correction ..... **[⌘]** + **[6]**

Expert dialog ..... **[⌘]** + **[8]**

Leave dialog ..... **[ESC]**

Start scan ..... **[RETURN]**

Undo / redo last operation ..... **[⌘]** + **[Z]**



Show optical scan resolution ..... **[CONTROL]**

Show scan interpolation ..... **[CONTROL]** + **[SHIFT]**



## Keyboard Shortcuts Windows

### ScanPilot

Apply / execute current tool ..... **RETURN**  
 Scroll ..... Button  or 

### PreScan / scan

Stop prescan / stop scan ..... **CONTROL** +   
 Switch between colour spaces ..... click with right mouse button on scan button





### Frames

Duplicate frame ..... **ALT** + click and move  
 Set frame to full scan size ..... **CONTROL** + **A**  
 Delete frame (extended keyboard) ..... **DEL**  
 Delete frame (normal keyboard) ..... **DELETE**  
 Frame reset ..... **ALT** + click on "Option" button

### Auto-adjust

Resetting auto-adjust ..... **ALT** + 

### Highlight / shadow tools

Set highlight ..... white triangle   
 Set midtone ..... pipette   
 Set shadow ..... black triangle   
 Multiple attempts with a tool ..... hold down **ALT**  
 Reset highlight / shadow ..... **ALT** +   
 Display brightest point ..... **CTRL** + **SHIFT**  
 Display darkest point ..... **CTRL**

### Masks in SilverFast SRD

Hide Mask Marquee ..... **CONTROL**  
 Darken inactive Mask area ..... **ALT** + **CONTROL**  
 Subtract from Mask ..... **ALT**  
 Add to Mask ..... **SHIFT**

## Histogram

Show result histogram ..... **[ALT]** in histogram-dialog

## Selective colour correction

Select all colours ..... **[CONTROL]** + **[A]**

Select additional colour ..... **[SHIFT]** + click in prescan  
or **[SHIFT]** + click on LED below column

Show inactive mask area ..... **[CONTROL]** + **[ALT]**

## Reset

Reset all parameters ..... **[SHIFT]** + click on “Option” button

Frame reset ..... **[ALT]** + click on “Option” button

Undo / redo last operation ..... **[CONTROL]** + **[Z]**

## Opening a dialog window

Zoom in preview ..... **[CONTROL]** + **[ALT]** + **[1]**

Image auto-adjust ..... **[CONTROL]** + **[ALT]** + **[2]**

Histogram dialog ..... **[CONTROL]** + **[ALT]** + **[3]**

Gradation dialog ..... **[CONTROL]** + **[ALT]** + **[4]**

Global correction ..... **[CONTROL]** + **[ALT]** + **[5]**

Selective colour correction ..... **[CONTROL]** + **[ALT]** + **[6]**

Expert dialog ..... **[CONTROL]** + **[ALT]** + **[8]**

Leave dialog ..... **[ESC]**

Start scan ..... **[RETURN]**

Undo / redo last operation ..... **[CONTROL]** + **[Z]**

Show scan resolution ..... **[CONTROL]**

Show resulting interpolated resolution ..... **[CONTROL]** + **[SHIFT]**



E

10-2003

SilverFast® und LaserSoft Imaging™ sind die eingetragenen Warenzeichen der LaserSoft Imaging AG, Deutschland. Alle erwähnten Warenzeichen sind die geschützten Warenzeichen der jeweiligen Inhaber.

SilverFast® and LaserSoft Imaging™ are registered trademarks of LaserSoft Imaging AG, Germany. All mentioned trademarks are the protected trademarks of the respective owners.

SilverFast® et LaserSoft Imaging™ sont des marques déposées de LaserSoft Imaging AG, Allemagne. Toutes les marques mentionnées sont les marques protégées des propriétaires respectifs.

SilverFast® y LaserSoft Imaging™ son marcas registradas de LaserSoft Imaging AG, Alemania. Todas las marcas mencionadas son marcas protegidas de sus respectivos propietarios.

SilverFast® e LaserSoft Imaging™ sono i marchi registrati della LaserSoft Imaging AG, Germania. Tutti i marchi che qui compaiono sono marchi protetti dei rispettivi proprietari.

SilverFast® e LaserSoft Imaging™ são marcas registradas da LaserSoft Imaging AG, Alemanha. Todas as marcas mencionadas são marcas protegidas dos respectivos proprietários.

LaserSoft Imaging AG  
Luisenweg 6-8  
24105 Kiel • Germany  
Tel.: (+49) 431-5 60 09-0  
Fax: (+49) 431-5 60 09-98  
eMail: [Info@SilverFast.de](mailto:Info@SilverFast.de)  
Internet: [www.SilverFast.de](http://www.SilverFast.de)

LaserSoft Imaging, Inc.  
P.O. Box 9343  
546 Bay Isles Road  
Longboat Key, FL-34228, USA  
Ph.: (+1) 941-383-7496  
Fax: (+1) 941-387-7574  
eMail: [info@SilverFast.com](mailto:info@SilverFast.com)  
Internet: [www.SilverFast.com](http://www.SilverFast.com)

**LaserSoft Imaging™**