

# **DPA-3051**

## **Data Adapter (USB type)**

### **User Manual**

#### **Introduction**

The Data Adapter DPA-3051 is specially made for downloading data from Digital Power Meters DPM-3232, DPM-3221 using USB 2.0 connection. It can be used to download and save as many Digital Power Meters as needed in turn. The power meters can either be not in use or being in use. In case the meter being in use, the Data Adapter can be used to monitor the real time display of voltage, current and power of connected meter. It comes with DPM application software used for retrieving, graphically displaying and saving DPM data.

#### **Precaution**

- a. This Data Adapter is designed and made for using with Manson DPM-3232 and DPM-3221 only.
- b. This Data Adapter is designed and made for indoor use only.
- c. Do not disassemble or attempt to repair the Data Adapter.
- d. Do not connect data cable to any devices other than DPM-3232, DPM-3221.
- e. Do not connect DC connector to any devices other than DPM-3232, DPM-3221.
- f. Do not connect Data Adapter to damaged DPM.
- g. Connect to PC using provided USB cable.

## Components inside box

- a. DPA-3051 Data Adapter (USB type)
- b. USB cable
- c. DC cable
- d. Data cable
- e. Application and USB driver CD



## Control



- a. USB connector
- b. Data connector
- c. DC connector

## Prepare PC before connect DPA-3051

Before connect DPA-3051 to PC. It is required to install USB driver.  
(Please refer to software manual in CDROM for detail installation steps)

### To install USB driver;

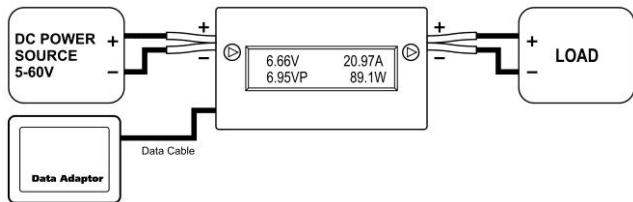
Run “<CDROM Drive>\USB Drivers 6.5 for  
Win\_XP\_S2K3\_Vista\_7\CP210xVCPInstaller.exe”

### Connect devices together

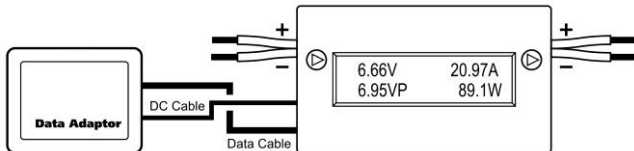
DPA should be connected to DPM before it is connected to PC. Please follow below steps to connect your DPA, DPM and PC.

#### Step 1 - Connect DPA-3051 to DPM

DPA-3051 can be used to work with DPM which either being in use or be not in use. In case DPM being in use, only connect the data cable between DPA and DPM as following diagram.

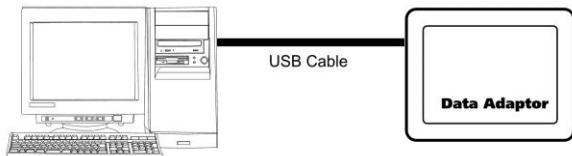


In case DPM be not in use, connect both DC cable and data cable as following diagram.

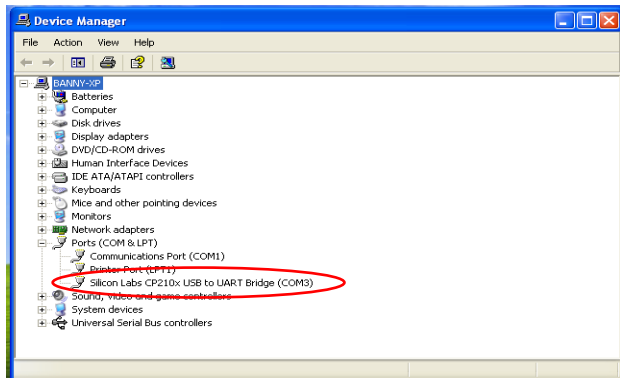


## Step 2 - Connect DPA-3051 to PC

DPA is connected to PC using USB cable come with the adapter.



When DPA is connected to Windows system with USB driver correctly installed. It will be mapped to COM port and be showed in device manager.



## Use DPM application software

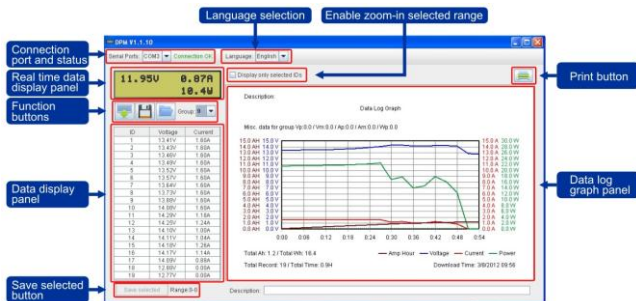
This software can be used to;

- Retrieving data from DPM
- Displaying data in graphical view
- Zoom in selected range of data
- Saving data in to CVS format file
- Print out by printer

(Please refer to software manual in CDROM for detail usage.)

## Start DPM software

Run <CDROM Drive>\dpm\dpm.bat



DPM software interface

Buttons	Function description
Serial Ports: COM3 Connection OK	Connection port selection and connection status
Language: English	Language selection
	Retrieving data from DPM
	Saving data to CSV file
	Loading data from CSV file
	Print graph to printer

<input type="button" value="Save selected"/> Rangs:10-16	Save selected data range
<input checked="" type="checkbox"/> Display only selected IDs	Click to zoom in selected data range

**\*Notes:**

Misc. Data for select group

Vp : Peak voltage value of current data group

Vm : Lowest voltage value of current data group

Ap : Peak current value of current data group

Am : Lowest current value of current data group

Wp : Peak power value of current data group

**Specifications**

<b>Connection</b>	
USB connection	USB 2.0 standard
Data connection	2.25mm phone plug
<b>Construction</b>	
Housing Material	Poly-Carbonate
Dimension & Weight	45(L)x35(W)x28(H)mm 20g
Supplied Accessories	User manual, USB cable, DC power cable, Data cable, software CD

7673-3051-0560

2012/05 REV.0