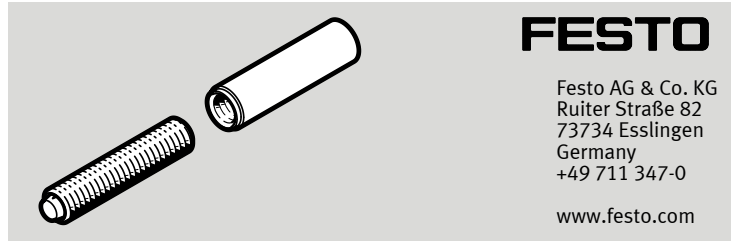


DYEF-G8/DYSS-G8

Shock absorber



Instructions | Assembly

8089707
2018-07
[8089709]



Translation of the original instructions

1 Further applicable documents

All available documents for the product → www.festo.com/pk.

Observe further applicable documents:

- Instruction manual for DGST mini slide

2 Safety

2.1 Safety instructions

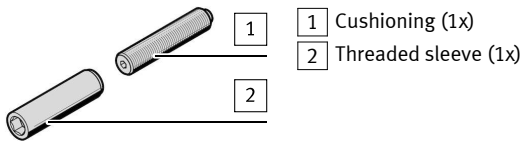
- Only assemble the product on components that are in a condition to be safely operated.
- Observe tightening torques. Unless otherwise specified, the tolerance of the tightening torques is ± 10 %.

2.2 Intended use

External cushioning of the mini slide DGST.

3 Product range overview

3.1 Included in delivery



- 1 Cushioning (1x)
- 2 Threaded sleeve (1x)

Fig. 1

3.2 Not included in the delivery

- 3 Mini slide (1x)
DGST-...-E1

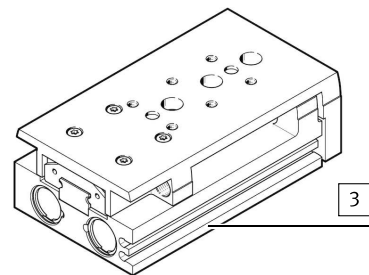


Fig. 2

4 Mounting

4.1 Assembly of shock absorber

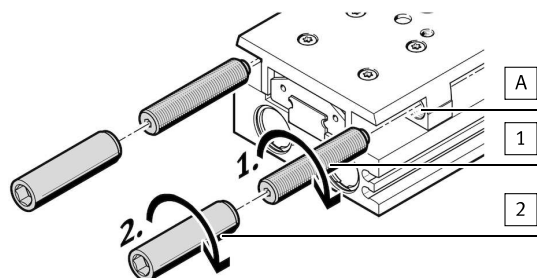


Fig. 3

1. Turn the cushioning **1** into the thread (A).
2. Turn the threaded sleeve **2** on the cushioning **1**.

4.2 Precision adjustment

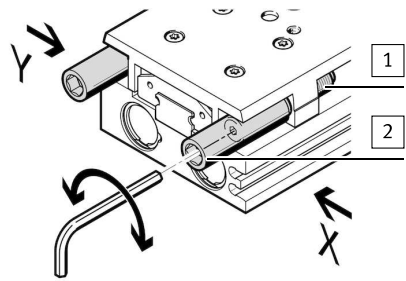


Fig. 4 Adjusting the end position

- Set the cushioning **1** to the desired end position. Comply with the minimum screwing depth L.

DGST	6	8	10	12	16	20	25
L	[mm]	1.5	2.3	2.4	2.4	2.35	2.25

Tab. 1 Extended end position: view X

DGST	6	8	10	12	16	20	25
L	[mm]	2.5	3	3	3	3.5	3.5

Tab. 2 Retracted end position: view Y

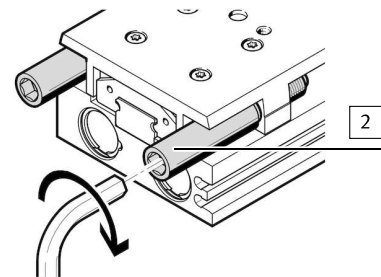


Fig. 5 Tightening the threaded sleeve

1. Vent the mini slide **3**.
2. Move the mini slide **3** into the desired end position.
3. Tighten the threaded sleeve **2**.

DYEF-G8	4	5	6	8	10	12	14
1 Cushioning	≈	1.3	1.5	2	2.5	3	4
2 Threaded sleeve	≈	3	4	5	6	8	10
	[Nm]	0.45	0.7	0.9	1.8	2.7	4.5

Tab. 3 Tightening torque DYEF-G8

DYSS-G8	2-4	3-4	4-4	5-5	7-5	8-8	10-10
1 Cushioning	≈	Slot 1x1	2	2	2.5	3	4
2 Threaded sleeve	≈	3	4	5	6	8	10
	[Nm]	0.45	0.7	0.9	1.8	2.7	4.5

Tab. 4 Tightening torque DYSS-G8

5 Test run

- Execute a test run. If the actuator strikes the end position too hard, reduce the speed of the actuator → 1 Further applicable documents.