



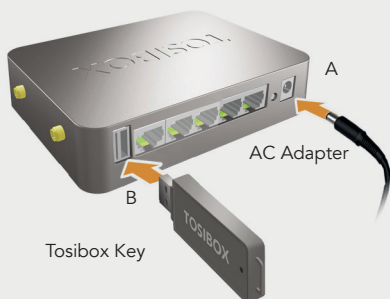
TOSIBOX®

Quick Start Guide v2.5

Copyright © Tosibox Oy, 2014

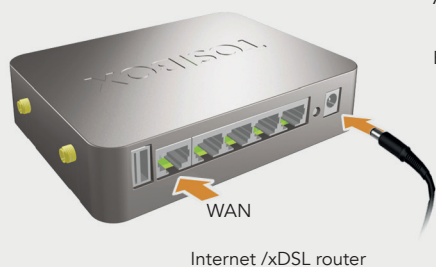
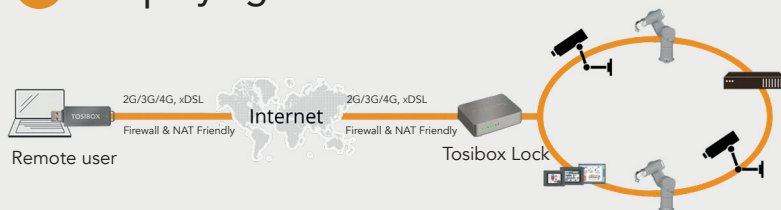
1 Serializing the Lock and Key

Tosibox Lock



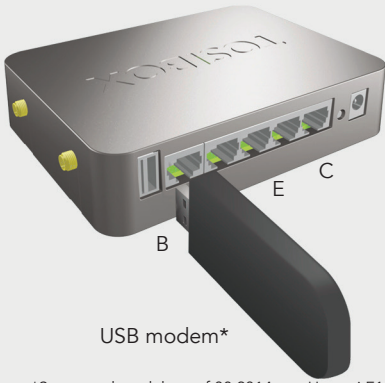
- A) Connect the AC adapter to the Lock and wait for 2 minutes.
- B) Serialize the Key to the Lock by inserting the Key into the USB port of the Lock. When the LED on the Key stops blinking, the serialization is complete.
- C) Go to **2a** if deploying into broadband networks or **2b** if deploying into mobile networks.

2a Deploying into Broadband Networks



- A) Connect an internet-connected ethernet cable to the Lock's WAN port.
- B) Plug the devices into the Lock's LAN ports (LAN 1-3 or connect wirelessly via WLAN). If the devices have static IP addresses, please see "Deploying the Lock" in the user manual.

2b Deploying into Mobile Networks



USB modem*

*Supported models as of 08.2014 are: Huawei E160, E169, E173, E176, E180, E353, E367, E372, E392, E3276, E3131, E1552 and the new Tosibox industrial modem.

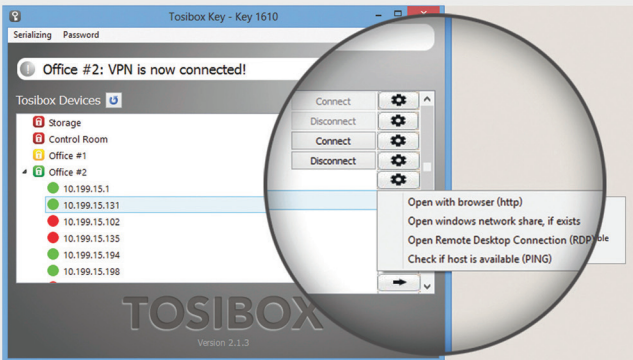
HiLink versions are not supported. For more information and latest supported modem models visit: help.tosibox.com.



- A) Disable the SIM card's PIN code query by inserting the SIM card into your mobile phone and using the settings menu. Once disabled, remove the SIM card from the phone and insert it into the USB Modem.
- B) Plug the USB modem* into the USB port of the Lock.
- C) Connect the computer to the Lock's service port with an ethernet cable.
- D) Type `http://172.17.17.17` into your browser's address field to access the Lock's user interface. Log in using "admin". The password can be found on the bottom of the Lock. Select "Network" > "3G" and enter your operator's APN name into the APN field. Click Save.
- E) Plug network devices into the Lock's LAN ports (LAN 1-3) or connect wirelessly via WLAN. See "Deploying the Lock" in the user manual for static IP configurations.

Note: Please see "Connecting the Lock to an existing network in client mode" in the Tosibox user manual (p.13) for information on deploying Locks as a DHCP client into existing networks. For other deployment configurations not contained within this guide, please see the Tosibox user manual or email us at support@tosibox.com.

3 Using the Key

- A) Insert a Tosibox Key into the USB port of your computer to install the Key software.



The Tosibox Key user interface illustrated above shows all Lock devices serialized to the Key and the network devices connected to them. For more options click  or  icon.



The Lock is connected to the Internet and the Key is connected to the Lock.



The Lock is connected to the Internet, but the Key isn't connected to the Lock.



The Lock is not connected to the Internet.

TOSIBOX®

Tosibox help



Tosibox Mobile Client



Download this guide

