

# 8006 SC 1 Zyklop Hybrid Ratchet Set, 1/2" drive, metric, 13 pieces

## The Zyklop Hybrid Ratchet, 1/2"



**EAN:** 4013288182159  
**Part number:** 05004090001  
**Article number:** 8006 SC 1

**Size:** 325x150x75 mm  
**Weight:** 2624 g  
**Country of origin:** CZ  
**Customs tariff number:** 82041100



- Switchover lever for convenient direction change
- Fine-pitched with 72 teeth for a return angle of only 5°
- Compact textile box with high robustness, low weight and volume
- Colour coding of the sockets according to size
- Smooth Twist to Unlock mechanism for a secure fit and simple removal of the sockets

Zyklop Hybrid ratchet set, 1/2" drive, metric. Including Zyklop Hybrid ratchet and Hybrid handle extension.

### Web link


[https://products.wera.de/en/zyklop\\_ratchets\\_and\\_accessories\\_the\\_zyklop\\_ratchets\\_the\\_zyklop\\_ratchets\\_1\\_2\\_the\\_zyklop\\_hybrid\\_ratchet\\_1\\_2\\_8006\\_sc\\_1.html](https://products.wera.de/en/zyklop_ratchets_and_accessories_the_zyklop_ratchets_the_zyklop_ratchets_1_2_the_zyklop_hybrid_ratchet_1_2_8006_sc_1.html)


Wera - 8006 SC 1  
05004090001 - 4013288182159


Wera Werkzeuge GmbH  
Korzter Straße 21-25  
D-42349 Wuppertal  
Tel: +49 (0)2 02 / 40 45-0  
E-Mail: [info@wera.de](mailto:info@wera.de)


The Zyklop Hybrid Ratchet, 1/2"

Set contents:

 **8006 C**  
05003780001 1 x 1/2" x 281 mm

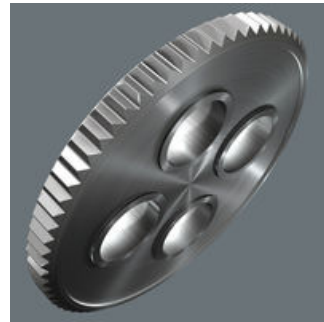
 **8797 C**  
05003781001 1 x 271 mm

 **8794 LC**  
05003638001 1 x 1/2" x 250 mm

 **8790 HMC HF**

05003730001	1 x 10 x 37 mm
05003731001	1 x 11 x 37 mm
05003732001	1 x 12 x 37 mm
05003733001	1 x 13 x 37 mm
05003734001	1 x 14 x 37 mm
05003735001	1 x 15 x 37 mm
05003736001	1 x 16 x 37 mm
05003737001	1 x 17 x 37 mm
05003738001	1 x 18 x 37 mm
05003739001	1 x 19 x 37 mm

**Low return angle**



The reversible ratchet with 72 fine-pitched teeth has a low return angle of only 5°. This short stroke allows fast and precise work in all types of installation.

**Ball lock**



The ball lock ensures sockets and accessories are securely fitted, providing increased safety during operation. A short press on the release button allows the tool to be changed quickly.

**Kraftform**



Multi-component Kraftform handle for optimum pressure and tensile loads.

**Web link**

[https://products.wera.de/en/zyklop\\_ratchets\\_and\\_accessories\\_the\\_zyklop\\_ratchets\\_the\\_zyklop\\_ratchets\\_1\\_2\\_the\\_zyklop\\_hybrid\\_ratchet\\_1\\_2\\_8006\\_sc\\_1.html](https://products.wera.de/en/zyklop_ratchets_and_accessories_the_zyklop_ratchets_the_zyklop_ratchets_1_2_the_zyklop_hybrid_ratchet_1_2_8006_sc_1.html)

Wera - 8006 SC 1  
05004090001 - 4013288182159

Wera Werkzeuge GmbH  
Korzter Straße 21-25  
D-42349 Wuppertal  
Tel: +49 (0)2 02 / 40 45-0  
E-Mail: info@wera.de

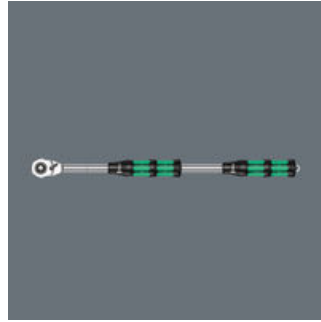
The Zyklop Hybrid Ratchet, 1/2"

Higher torque transfer



Larger overall length for higher torque transfer.

Hybrid extension



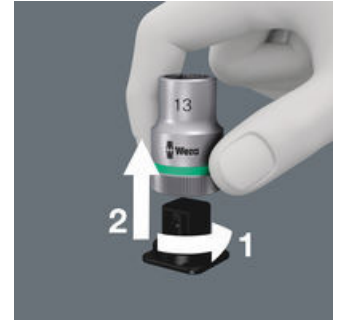
Even more torque can be applied by using the extension.

Take it easy tool finder system



Take it easy tool finder system - with profile and size colour-coding for quick and easy tool selection. Colour-coded system for hexagon drive screws (L-Keys, Zyklop bit sockets), external hex drive screws and nuts (Joker wrenches, Zyklop sockets and Zyklop bit sockets with holding function), and TORX® drive screws (L-Keys, Zyklop bit sockets).

Secure hold and easy removal



The all new smooth turning mechanism guarantees both secure and rattle-free storage, yet allows easy removal of the tool.

Web link

[https://products.wera.de/en/zyklop\\_ratchets\\_and\\_accessories\\_the\\_zyklop\\_ratchets\\_the\\_zyklop\\_ratchets\\_1\\_2\\_the\\_zyklop\\_hybrid\\_ratchet\\_1\\_2\\_8006\\_sc\\_1.html](https://products.wera.de/en/zyklop_ratchets_and_accessories_the_zyklop_ratchets_the_zyklop_ratchets_1_2_the_zyklop_hybrid_ratchet_1_2_8006_sc_1.html)

Wera - 8006 SC 1  
05004090001 - 4013288182159

Wera Werkzeuge GmbH  
Korzerter Straße 21-25  
D-42349 Wuppertal  
Tel: +49 (0)2 02 / 40 45-0  
E-Mail: [info@wera.de](mailto:info@wera.de)