

## Han® EE Push-In module, male 0,5-2,5mm<sup>2</sup>

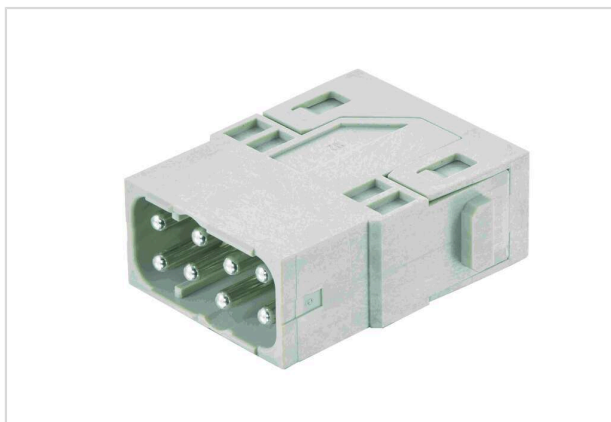


Image is for illustration purposes only. Please refer to product description.

Part number	09 14 008 5001
Specification	Han® EE Push-In module, male 0,5-2,5mm <sup>2</sup>
HARTING eCatalogue	<a href="https://b2b.harting.com/09140085001">https://b2b.harting.com/09140085001</a>

### Identification

Category	Modules
Series	Han-Modular®
Type of module	Han® EE module
Size of the module	Single module

### Version

Termination method	Push-In
Gender	Male
Number of contacts	8

### Technical characteristics

Conductor cross-section	0.5 ... 2.5 mm <sup>2</sup>
Rated current	16 A
Rated voltage	400 V
Rated impulse voltage	6 kV
Pollution degree	3
Insulation resistance	>10 <sup>10</sup> Ω
Limiting temperature	-40 ... +125 °C
Mating cycles	≥500

### Material properties

Material (insert)	Polycarbonate (PC)
Colour (insert)	RAL 7032 (pebble grey)



**Pushing Performance**  
Since 1945

## Material properties

Material flammability class acc. to UL 94	V-0
RoHS	compliant
ELV status	compliant
China RoHS	e
REACH Annex XVII substances	Not contained
REACH ANNEX XIV substances	Not contained
REACH SVHC substances	Not contained
California Proposition 65 substances	Not contained

## Specifications and approvals

Specifications	IEC 60664-1
	IEC 61984
	IEC 61373 Category 2
	IEC 60352-7

## Commercial data

Packaging size	2
Net weight	20.81 g
Country of origin	Germany
European customs tariff number	85389099
ETIM	EC000438
eCl@ss	27440217 Module for industrial connectors (power/signals)