

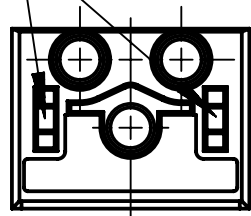
Usable with HARTING PushPull (V4) receptacle housings (please order separately):


09455950031; 09455450021; 09455450029; 09455450031

Usable crimp contacts (please order separately):

- 3x female crimp contacts 09 46 500 0404 0.75mm<sup>2</sup> (AWG 20)
- 3x female crimp contacts 09 46 500 0408 1.0mm<sup>2</sup> (AWG 18)
- 3x female crimp contacts 09 46 500 0402 1.5mm<sup>2</sup> (AWG 16-14)
- 3x female crimp contacts 09 46 500 0406 2.5mm<sup>2</sup> (AWG 12)

slot for coding pin  
09468400000



	All rights reserved Department EC PD - DE	All Dimensions in mm Original Size DIN A4		Scale 2:1	Free size tol.	Ref. Sub.
		Created by ZWAHR	Inspected by ELLERMANN	Standardisation HOFFMANN	Date 2017-11-06	State Final Release
HARTING Electronics GmbH D-32339 Espelkamp		Title HPP V4 Power insert crimp 250V/16A 3p			Doc-Key / ECM-Nr. 100216691/UGD/003/D 500000127472	
		Type TB	Number 09465003401		Rev. D	Page 1/1