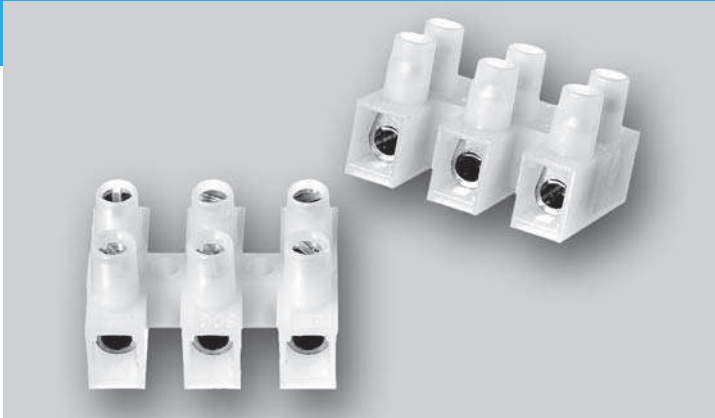


# Europa Series Terminal Blocks



## 1000

Connection: conductor size 0.5 - 6.0 mm<sup>2</sup> (with wire protector)  
conductor size 0.5 - 10.0 mm<sup>2</sup> (without wire protector)

Fixing: by screw or rivet size Ø 3.6 mm

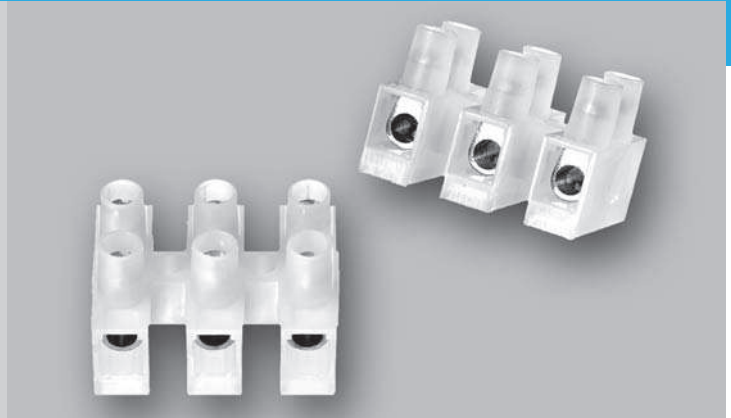
Torque screw: M3,5: ⤵ max. 0.8 Nm

Stripping length: 7.5 - 8 mm

Important approvals: VDE, UL

Accessories: slip-on fused connectors (page 81), covers (page 83), strain reliefs, marking labels (page 85)

Upon request: 7 - 11 pole, center stop MDS, printing, different polyamides (in particular glow wire to EN 60335-1), different screws



## 1000 K with Raised Base

Connection: conductor size 0.5 - 6.0 mm<sup>2</sup> (with wire protector)  
conductor size 0.5 - 10.0 mm<sup>2</sup> (without wire protector)

Fixing: by screw or rivet size Ø 3.6 mm

Torque screw: M3,5: ⤵ max. 0.8 Nm

Stripping length: 7.5 - 8 mm

Important approvals: VDE, UL

Accessories: slip-on fused connectors (page 81), covers (page 83), strain reliefs, marking labels (page 85)

Upon request: 7 - 11 pole, center stop MDS, printing, different polyamides (in particular glow wire to EN 60335-1), different screws

Description	Item	Order Number	PU	Description	Item	Order Number	PU
<b>with Wire Protectors</b>				<b>with Wire Protectors</b>			
1 pole	1000/ 1 DS	125301	500	1 pole	1000 K/ 1 DS	125701	500
2 pole	1000/ 2 DS	125302	1000	2 pole	1000 K/ 2 DS	125702	1000
3 pole	1000/ 3 DS	125303	400	3 pole	1000 K/ 3 DS	125703	400
4 pole	1000/ 4 DS	125304	500	4 pole	1000 K/ 4 DS	125704	500
5 pole	1000/ 5 DS	125305	400	5 pole	1000 K/ 5 DS	125705	350
6 pole	1000/ 6 DS	125306	300	6 pole	1000 K/ 6 DS	125706	250
12 pole	1000/12 DS	125312	25	12 pole	1000 K/12 DS	125712	25
<b>without Wire Protectors</b>				<b>without Wire Protectors</b>			
1 pole	1000/ 1	125201	500	1 pole	1000 K/ 1	125601	500
2 pole	1000/ 2	125202	1000	2 pole	1000 K/ 2	125602	1000
3 pole	1000/ 3	125203	400	3 pole	1000 K/ 3	125603	400
4 pole	1000/ 4	125204	500	4 pole	1000 K/ 4	125604	500
5 pole	1000/ 5	125205	400	5 pole	1000 K/ 5	125605	350
6 pole	1000/ 6	125206	300	6 pole	1000 K/ 6	125606	250
12 pole	1000/12	125212	25	12 pole	1000 K/12	125612	25

