

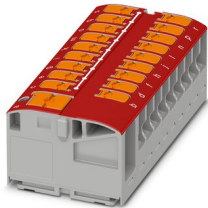
Distribution block - PTVFIX 6/18X2,5 RD



1019615

<https://www.phoenixcontact.com/pc/products/1019615>

Please be informed that the data shown in this PDF document is generated from our Online Catalog. Please find the complete data in the user documentation. Our General Terms of Use for Downloads are valid.



Distribution block, nom. voltage: 450 V, nominal current: 24 A, connection method: Push-in connection, Load contact, Rated cross section: 2.5 mm², cross section: 0.14 mm² - 4 mm², Line contact, Rated cross section: 6 mm², cross section: 0.5 mm² - 10 mm², mounting type: for snapping onto a DIN rail adapter, Direct mounting with flange, Free-hanging, color: red

Your advantages

- Flexible use, thanks to DIN rail mounting, direct mounting or adhesive mounting
- Clear wiring, thanks to eleven different color variants
- Time-saving conductor connection, thanks to tool-free Push-in direct connection technology
- Time savings of up to 80 %, thanks to ready-to-mount blocks without manual bridging
- Space savings of up to 50 % on the DIN rail, thanks to transverse mounting

Commercial Data

Item number	1019615
Packing unit	10 pc
Minimum order quantity	10 pc
Product Key	BEA224
GTIN	4055626506470
Weight per Piece (including packing)	34.8 g
Weight per Piece (excluding packing)	31.429 g
Customs tariff number	85369010
Country of origin	PL

Distribution block - PTVFIX 6/18X2,5 RD



1019615

<https://www.phoenixcontact.com/pc/products/1019615>

Technical Data

Product properties

Product type	Distributor terminal block
Number of positions	1
Number of connections	19
Number of rows	1

Insulation characteristics

Overvoltage category	III
Degree of pollution	3

Electrical properties

Rated surge voltage	8 kV
Maximum power dissipation for nominal condition	0.77 W

Connection data

Service Entrance	yes
Number of connections per level	19
Nominal cross section	2.5 mm ²

Load contact

Stripping length	8 mm ... 10 mm
Internal cylindrical gage	A3
	B3
Connection in acc. with standard	IEC 60998-2-2
Conductor cross section solid	0.14 mm ² ... 4 mm ²
Cross section AWG	26 ... 12 (converted acc. to IEC)
Conductor cross section flexible	0.14 mm ² ... 2.5 mm ²
Conductor cross section, flexible [AWG]	26 ... 14 (converted acc. to IEC)
Flexible conductor cross section flexible (ferrule, w/o plastic sleeve)	0.14 mm ² ... 2.5 mm ²
Flexible conductor cross section (ferrule with plastic sleeve)	0.14 mm ² ... 2.5 mm ²
Conductor cross-section flexible (2 conductors with the same cross-section, with TWIN ferrule and plastic sleeve)	0.5 mm ²
Nominal current	24 A
Maximum load current	32 A (with 4 mm ² conductor cross section)
Maximum total current	57 A (with 10 mm ² conductor cross section)
Nominal voltage	450 V
Nominal cross section	2.5 mm ²

Line contact

Stripping length	10 mm ... 12 mm
Internal cylindrical gage	A5
	B4

Distribution block - PTVFIX 6/18X2,5 RD



1019615

<https://www.phoenixcontact.com/pc/products/1019615>

Conductor cross section solid	0.5 mm ² ... 10 mm ²
Cross section AWG	20 ... 8 (converted acc. to IEC)
Conductor cross section flexible	0.5 mm ² ... 6 mm ²
Conductor cross section, flexible [AWG]	20 ... 10 (converted acc. to IEC)
Flexible conductor cross section flexible (ferrule, w/o plastic sleeve)	0.5 mm ² ... 6 mm ²
Flexible conductor cross section (ferrule with plastic sleeve)	0.5 mm ² ... 6 mm ²
Conductor cross-section flexible (2 conductors with the same cross-section, with TWIN ferrule and plastic sleeve)	0.5 mm ² ... 1.5 mm ²
Nominal current	41 A (with 6 mm ² conductor cross section)
Maximum load current	57 A (with 10 mm ² conductor cross section)
Nominal cross section	6 mm ²

Load contact Connection cross sections directly pluggable

Conductor cross section solid	0.34 mm ² ... 4 mm ²
Conductor cross section, solid [AWG]	22 ... 18 (converted acc. to IEC)
Flexible conductor cross section flexible (ferrule, w/o plastic sleeve)	0.5 mm ² ... 2.5 mm ²
Flexible conductor cross section (ferrule with plastic sleeve)	0.34 mm ² ... 2.5 mm ²

Line contact Connection cross sections directly pluggable

Conductor cross section solid	1 mm ² ... 10 mm ²
Conductor cross section, solid [AWG]	18 ... 8 (converted acc. to IEC)
Flexible conductor cross section flexible (ferrule, w/o plastic sleeve)	1 mm ² ... 6 mm ²
Flexible conductor cross section (ferrule with plastic sleeve)	1 mm ² ... 6 mm ²

Dimensions

Width	56.9 mm
Height	21.7 mm
Length	28.6 mm

Material specifications

Color	red
Flammability rating according to UL 94	V0
Insulating material group	I
Insulating material	PA
Static insulating material application in cold	-60 °C
Temperature index of insulation material (DIN EN 60216-1 (VDE 0304-21))	125 °C
Relative insulation material temperature index (Elec., UL 746 B)	130 °C

Mechanical properties

Mechanical data

Open side panel	No
-----------------	----

Distribution block - PTVFIX 6/18X2,5 RD



1019615

<https://www.phoenixcontact.com/pc/products/1019615>

Environmental and real-life conditions

Ambient conditions

Ambient temperature (operation)	-60 °C ... 105 °C (max. short-term operating temperature RTI Elec.)
Ambient temperature (storage/transport)	-25 °C ... 60 °C (for a short time, not exceeding 24 h, -60 °C to +70 °C)
Ambient temperature (assembly)	-5 °C ... 70 °C
Ambient temperature (actuation)	-5 °C ... 70 °C
Permissible humidity (storage/transport)	30 % ... 70 %

Standards and regulations

Connection in acc. with standard	IEC 60998-2-2
----------------------------------	---------------

Mounting

Mounting type	for snapping onto a DIN rail adapter
	Direct mounting with flange
	Free-hanging

Distribution block - PTVFIX 6/18X2,5 RD

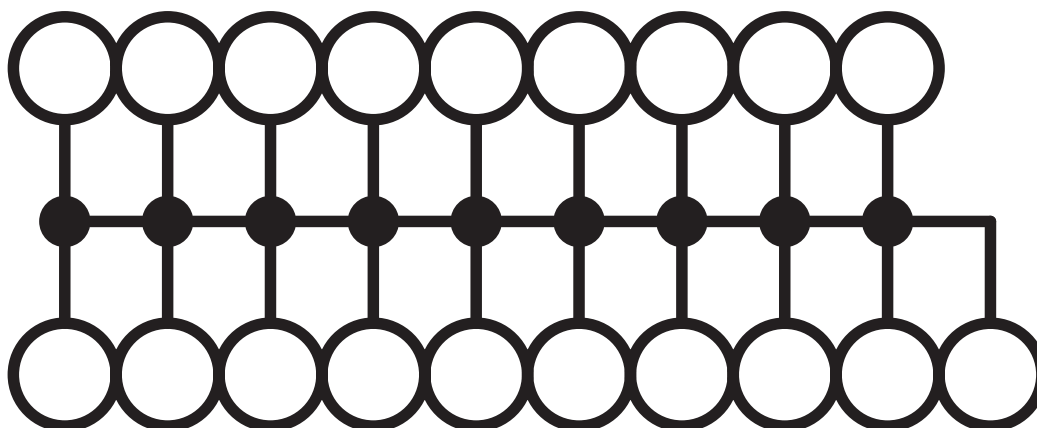


1019615

<https://www.phoenixcontact.com/pc/products/1019615>

Drawings

Circuit diagram



Distribution block - PTVFIX 6/18X2,5 RD



1019615

<https://www.phoenixcontact.com/pc/products/1019615>

Approvals

 **CSA**
Approval ID: 158887

 **cULus Recognized**
Approval ID: E60425

Distribution block - PTVFIX 6/18X2,5 RD



1019615

<https://www.phoenixcontact.com/pc/products/1019615>

Classifications

ECLASS

ECLASS-11.0

27141120

ETIM

ETIM 8.0

EC000897

UNSPSC

UNSPSC 21.0

39121400

Distribution block - PTVFIX 6/18X2,5 RD



1019615

<https://www.phoenixcontact.com/pc/products/1019615>

Environmental Product Compliance

China RoHS	Environmentally friendly use period: unlimited = EFUP-e
	No hazardous substances above threshold values

Distribution block - PTVFIX 6/18X2,5 RD

1019615

<https://www.phoenixcontact.com/pc/products/1019615>

Accessories

Plug-in bridge

Plug-in bridge - FBS 2-5 - 3030161

<https://www.phoenixcontact.com/pc/products/3030161>



Plug-in bridge, pitch: 5.2 mm, color: red

Plug-in bridge

Plug-in bridge - FBS 2-5 GN - 3032143

<https://www.phoenixcontact.com/pc/products/3032143>



Plug-in bridge, pitch: 5.2 mm, color: green

Distribution block - PTVFIX 6/18X2,5 RD

1019615

<https://www.phoenixcontact.com/pc/products/1019615>

Plug-in bridge

Plug-in bridge - FBS 2-5 BU - 3036877

<https://www.phoenixcontact.com/pc/products/3036877>



Plug-in bridge, pitch: 5.2 mm, color: blue

Plug-in bridge

Plug-in bridge - FBS 2-5 GY - 3038969

<https://www.phoenixcontact.com/pc/products/3038969>



Plug-in bridge, pitch: 5.2 mm, color: gray

Distribution block - PTVFIX 6/18X2,5 RD

1019615

<https://www.phoenixcontact.com/pc/products/1019615>

DIN rail adapter

DIN rail adapter - PTFIX-NS35 - 3274054

<https://www.phoenixcontact.com/pc/products/3274054>

DIN rail adapter, length: 58.1 mm, width: 28.6 mm, height: 11 mm, color: gray



DIN rail adapter

DIN rail adapter - PTFIX-NS35A - 3274056

<https://www.phoenixcontact.com/pc/products/3274056>

DIN rail adapter, length: 45.7 mm, width: 10.3 mm, height: 11.9 mm, color: gray



Distribution block - PTVFIX 6/18X2,5 RD

1019615

<https://www.phoenixcontact.com/pc/products/1019615>

DIN rail adapter

DIN rail adapter - PTFIX-NS35A-FIX - 3274057

<https://www.phoenixcontact.com/pc/products/3274057>

DIN rail adapter, with end stop function, length: 45.7 mm, width: 10.3 mm, height: 12 mm, color: gray

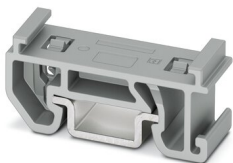


DIN rail adapter

DIN rail adapter - PTFIX-NS15A - 3274058

<https://www.phoenixcontact.com/pc/products/3274058>

DIN rail adapter, length: 28.6 mm, width: 10.3 mm, height: 10.8 mm, color: gray



Distribution block - PTVFIX 6/18X2,5 RD

1019615

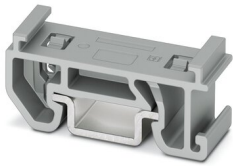
<https://www.phoenixcontact.com/pc/products/1019615>

DIN rail adapter

DIN rail adapter - PTFIX-NS15A-FIX - 3274059

<https://www.phoenixcontact.com/pc/products/3274059>

DIN rail adapter, with end stop function, length: 28.6 mm, width: 10.3 mm, height: 10.8 mm, color: gray



Flange

Flange - PTFIX-F - 3274060

<https://www.phoenixcontact.com/pc/products/3274060>

Flange, with screw-on fixing, length: 28.6 mm, width: 8.6 mm, height: 21.7 mm, color: gray



Distribution block - PTVFIX 6/18X2,5 RD

1019615

<https://www.phoenixcontact.com/pc/products/1019615>

Marker strip

Marker strip - TML (EX3,8)R - 0801837

<https://www.phoenixcontact.com/pc/products/0801837>



Marker strip, Roll, white, unlabeled, can be labeled with: THERMOMARK E.300 (D)/600 (D), THERMOMARK ROLL 2.0, THERMOMARK ROLL, THERMOMARK ROLL X1, THERMOMARK ROLLMASTER 300/600, THERMOMARK X1.2, mounting type: adhesive, for terminal block width: 30000 mm, lettering field size: 30000 x 3.8 mm, Number of individual labels: 12

Marker strip

Marker strip - TML (104X3,8)R - 0801833

<https://www.phoenixcontact.com/pc/products/0801833>



Marker strip, Roll, white, unlabeled, can be labeled with: THERMOMARK E.300 (D)/600 (D), THERMOMARK ROLL 2.0, THERMOMARK ROLL, THERMOMARK ROLL X1, THERMOMARK ROLLMASTER 300/600, THERMOMARK X1.2, mounting type: adhesive, for terminal block width: 104 mm, lettering field size: 104 x 3.8 mm, Number of individual labels: 2500

Distribution block - PTVFIX 6/18X2,5 RD

1019615

<https://www.phoenixcontact.com/pc/products/1019615>

Marker strip

Marker strip - TML (104X2,8)R - 0801832

<https://www.phoenixcontact.com/pc/products/0801832>



Marker strip, Roll, white, unlabeled, can be labeled with: THERMOMARK E.300 (D)/600 (D), THERMOMARK ROLL 2.0, THERMOMARK ROLL, THERMOMARK ROLL X1, THERMOMARK ROLLMASTER 300/600, THERMOMARK X1.2, mounting type: adhesive, for terminal block width: 104 mm, lettering field size: 104 x 2.8 mm, Number of individual labels: 2500

Marker strip

Marker strip - TML (EX2,8)R - 0801836

<https://www.phoenixcontact.com/pc/products/0801836>



Marker strip, Roll, white, unlabeled, can be labeled with: THERMOMARK E.300 (D)/600 (D), THERMOMARK ROLL 2.0, THERMOMARK ROLL, THERMOMARK ROLL X1, THERMOMARK ROLLMASTER 300/600, THERMOMARK X1.2, mounting type: adhesive, for terminal block width: 30000 mm, lettering field size: 30000 x 2.8 mm, Number of individual labels: 14

Distribution block - PTVFIX 6/18X2,5 RD

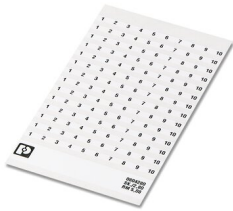
1019615

<https://www.phoenixcontact.com/pc/products/1019615>

Marker card

Marker card - SK 2,8 REEL P5,2 WH CUS - 8199986

<https://www.phoenixcontact.com/pc/products/8199986>



Marker card, can be ordered: by card, white, labeled according to customer specifications, mounting type: adhesive, for terminal block width: 5.2 mm, lettering field size: continuous x 2.8 mm

Marker card

Marker card - SK 3,8 REEL P5,2 WH CUS - 8199989

<https://www.phoenixcontact.com/pc/products/8199989>



Marker card, can be ordered: by card, white, labeled according to customer specifications, mounting type: adhesive, for terminal block width: 5.2 mm, lettering field size: continuous x 3.8 mm

Distribution block - PTVFIX 6/18X2,5 RD



1019615

<https://www.phoenixcontact.com/pc/products/1019615>

Marker for terminal blocks

Marker for terminal blocks - US-TML (104X3,8) - 0830768

<https://www.phoenixcontact.com/pc/products/0830768>



Marker for terminal blocks, Card, white, unlabeled, can be labeled with: BLUEMARK ID COLOR, BLUEMARK ID, THERMOMARK PRIME, THERMOMARK CARD 2.0, THERMOMARK CARD, mounting type: adhesive, lettering field size: 104 x 3.8 mm, Number of individual labels: 22

Marker for terminal blocks

Marker for terminal blocks - US-TML (104X2,8) - 0830767

<https://www.phoenixcontact.com/pc/products/0830767>



Marker for terminal blocks, Card, white, unlabeled, can be labeled with: BLUEMARK ID COLOR, BLUEMARK ID, THERMOMARK PRIME, THERMOMARK CARD 2.0, THERMOMARK CARD, mounting type: adhesive, lettering field size: 104 x 2.8 mm, Number of individual labels: 26

Distribution block - PTVFIX 6/18X2,5 RD



1019615

<https://www.phoenixcontact.com/pc/products/1019615>

Marker card

Marker card - SK U/3,8 WH:UNBEDRUCKT - 0803906

<https://www.phoenixcontact.com/pc/products/0803906>



Marker card, Sheet, white, unlabeled, can be labeled with: PLOTMARK, CMS-P1-PLOTTER, Office printing systems, mounting type: adhesive, for terminal block width: 210 mm, lettering field size: 186 x 3.8 mm, Number of individual labels: 1440

Marker card

Marker card - SK U/2,8 WH:UNBEDRUCKT - 0803883

<https://www.phoenixcontact.com/pc/products/0803883>



Marker card, Sheet, white, unlabeled, can be labeled with: PLOTMARK, CMS-P1-PLOTTER, Office printing systems, mounting type: adhesive, for terminal block width: 210 mm, lettering field size: 186 x 2.8 mm, Number of individual labels: 3600

Distribution block - PTVFIX 6/18X2,5 RD



1019615

<https://www.phoenixcontact.com/pc/products/1019615>

Label

Label - MM-TML (EX3,8)R C1 WH/BK - 1092026

<https://www.phoenixcontact.com/pc/products/1092026>



Label, Roll, white/black, unlabeled, can be labeled with: THERMOFOX, THERMOMARK GO, THERMOMARK GO.K, mounting type: adhesive, lettering field size: continuous x 2.8 mm

Phoenix Contact 2022 © - all rights reserved

<https://www.phoenixcontact.com>

PHOENIX CONTACT GmbH & Co. KG

Flachsmarktstraße 8

D-32825 Blomberg

+49 (0) 5235-3 00

info@phoenixcontact.com