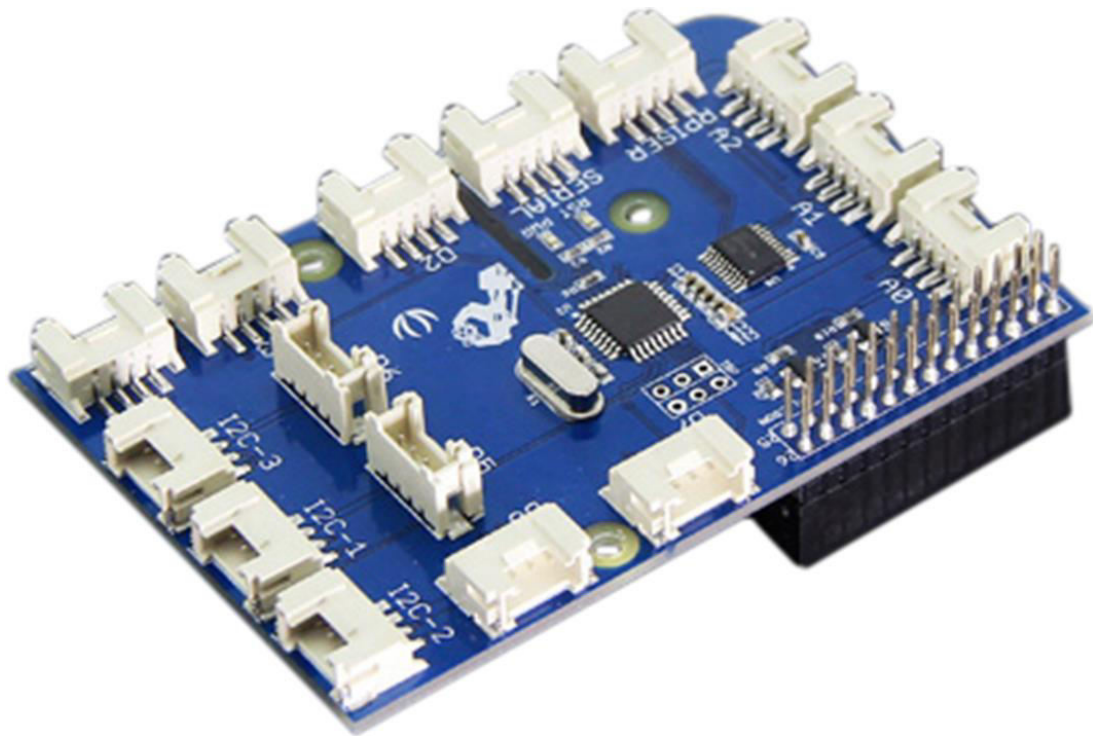




**seeed** studio  
The IoT Hardware Enabler

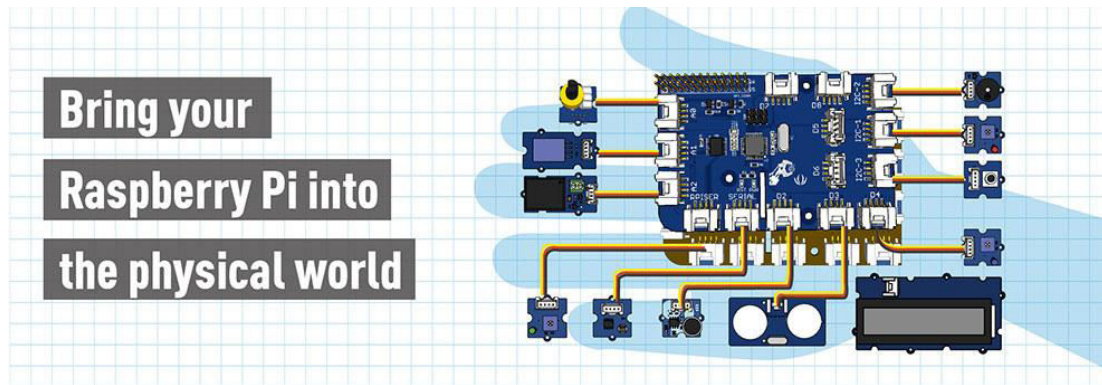


**GrovePi+**

**GrovePi+**  
The bridge  
Between  
Raspberry Pi &  
Grove family

Web enables your world!





### **What is GrovePi+**

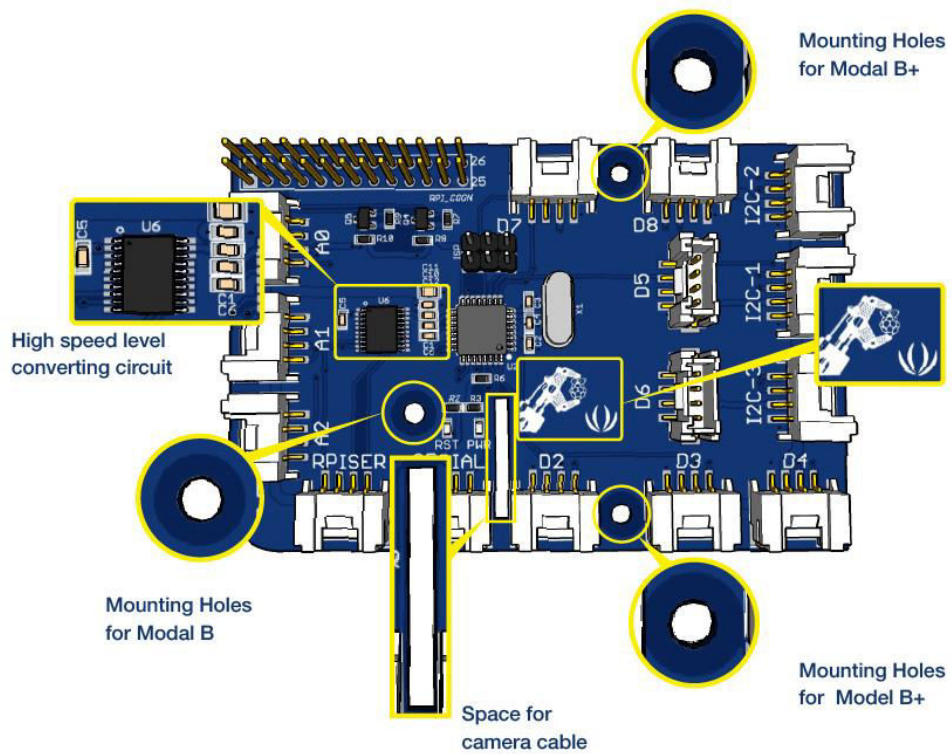
GrovePi+ is add-on board with 15 Grove 4-pin interfaces that brings Grove sensors to the Raspberry Pi. It is the newest version compatible with Raspberry Pi model B/B+/A+/2/3 perfectly.

GrovePi+ is an easy-to-use and modular system for hardware hacking with the Raspberry Pi, no need for soldering or breadboards: plug in your Grove sensors and start programming directly. Grove is an easy to use collection of more than 100 inexpensive plug-and-play modules that sense and control the physical world. By connecting Grove Sensors to Raspberry Pi, it empowers your Pi in the physical world. With hundreds of sensors to choose from Grove families, the possibilities for interaction are endless.

**NOTE: The Raspberry Pi board is not included.**

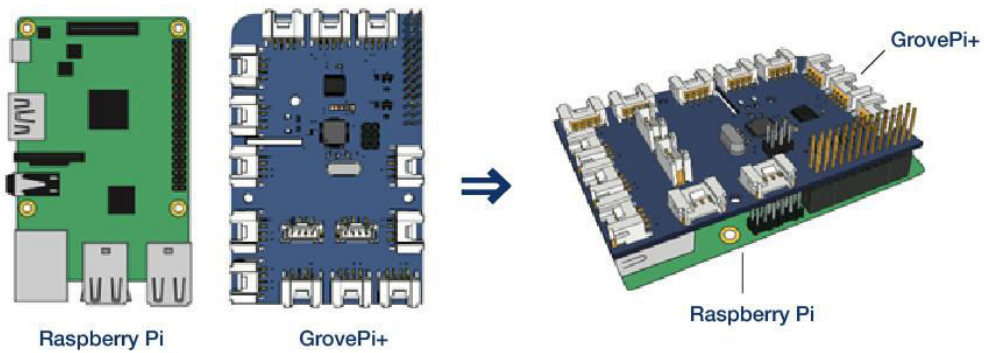
### **What is New**

- Compatible with Raspberry Pi model B/B+/A+/2/3 perfectly
- Faster SPI and higher reliability UART connections
- Easier to assemble camera cables and LCD cables
- Simplified procedures of firmware update



### How to use

- Step 1 - Slip the GrovePi+ board over your Raspberry Pi
- Step 2 - Connect the Grove modules to the GrovePi+ board
- Step 3 - Upload your program to Raspberry Pi
- Step 4 - Begin taking in the world data



### Technical details

Dimensions	88mm x58mm x23mm
Weight	G.W 51g
Battery	Exclude
Grove header Vcc output Voltage	5Vdc

### Part List

Grove Pi+	1
-----------	---

### ECCN/HTS

HSCODE	8517709000
USHSCODE	8517700000
UPC	841454100034
ROHS	1