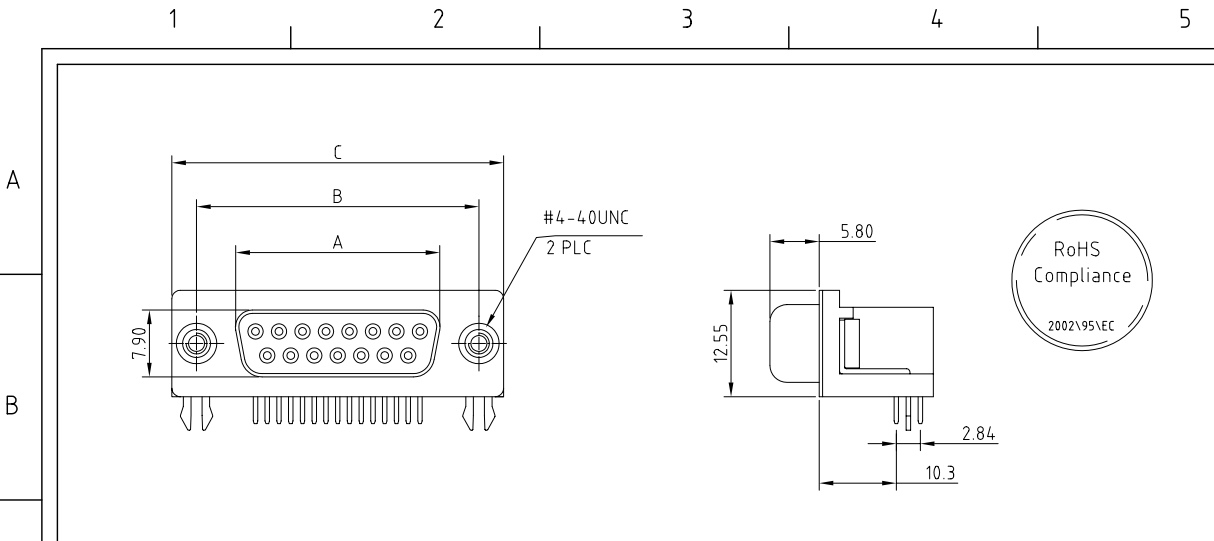
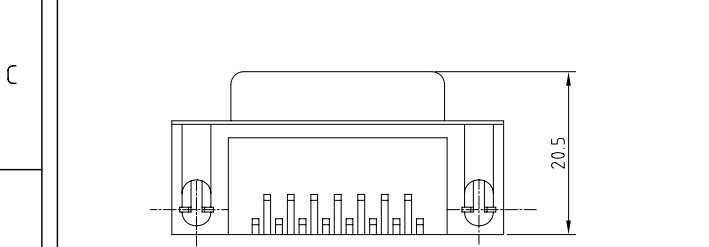


RevNo		Date	Signature	Checked
-------	--	------	-----------	---------



1 0 3 X X F X X X - - - 4 - L F

D-Sub 90D							
Typ	09	15	25	37			
		Female	8.Nickel	9.Tin	11.Gold		
	1.White	3.Black	4.Yellow	6.Green	9.Blue	10.PC99	1.Full
	Vacant:No Screw			S:4.8			L:5.8
	Vacant:No Accessories			V0.Coalescent Nut H=5.8			V.Lock Screw.
	VI.With Screw.			VII.Additional Screw.			
	Vacant:Default 1u'			3.3u'			5.5u'
				6.10u'			7.15u'
							8.30u'



Note

No.	A	B	C
09	16.33	24.99	30.81
15	24.66	33.32	39.14
25	38.38	47.04	53.04
37	54.83	63.50	69.32

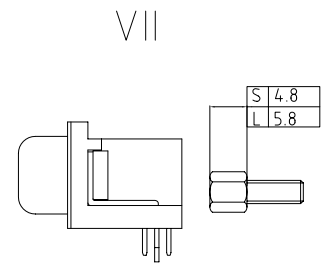
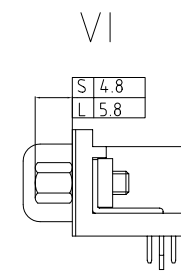
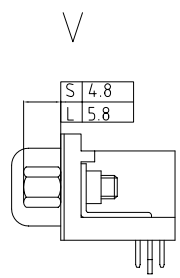
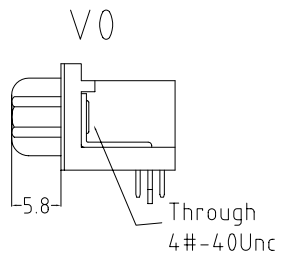
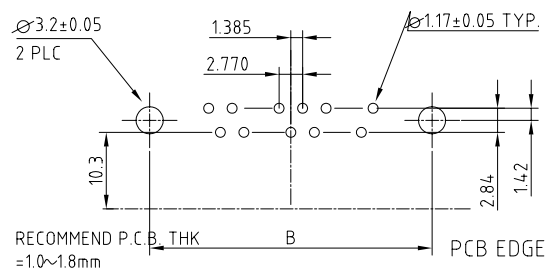
ELECTRICAL CHARACTERISTICS

Contact Current Rating:3Amperes.
 Dielectric Withstanding Voltage:AC 500V at sea level.
 Insulation Resistance:1000Megohms Min.
 Contact Resistance:30Milliohms Max.
 Operation Temperature : -55°C to +105°C.

Material

Contact :Copper Alloy.
 Insulator:PBT. (UL94-V0)
 Shell: SPCC.
 Z-Piece: Copper Alloy.
 Screw: Copper Alloy.
 Rivet: Copper Alloy. or Zinc.

Recommend PCB Layout



DRAW.BY	LinHaiFong	DATE	2005-10-10	UNIT	MM	TOLERANCE UNSPECIFIED	X ±0.30 .XX ±0.25 .XXX ±0.150	Ang. ±2°
APPVL.BY		VERSION	A	SCALE		DWG.No.	F:/XX/ / +	

Chin Shong
 Enterprise CO., LTD.

ITEM	D-SUB Female 90D-DIP /9.4
PART No.	
CUSTOMER	