

Industrial Ethernet Switch - FL SWITCH 1016N



1085255

<https://www.phoenixcontact.com/pc/products/1085255>

Please be informed that the data shown in this PDF document is generated from our Online Catalog. Please find the complete data in the user documentation. Our General Terms of Use for Downloads are valid.



Narrow Ethernet switch, sixteen RJ45 ports with 10/100 Mbps on all ports, automatic data transmission speed detection, autocrossing function, and QoS

Your advantages

- QoS-prioritized (Quality of Service) messages
- RJ45 ports support a transmission speed of 10/100 Mbps
- Local diagnostic indicators with LEDs
- PROFINET PTCP filter for reliable communication on PROFINET networks
- Enhanced traffic prioritization for automation protocols
- Energy-efficient Ethernet in accord. with IEEE 802.3az
- PROFINET Conformance Class A for real-time data exchange
- Auto negotiation and autocrossing detection simplifies installation and setup

Commercial Data

Item number	1085255
Packing unit	1 pc
Minimum order quantity	1 pc
Product Key	DNN116
GTIN	4055626835037
Weight per Piece (including packing)	350 g
Weight per Piece (excluding packing)	266 g
Customs tariff number	85176200
Country of origin	TW

Industrial Ethernet Switch - FL SWITCH 1016N



1085255

<https://www.phoenixcontact.com/pc/products/1085255>

Technical Data

Dimensions

Width	40 mm
Height	140.4 mm
Depth	92.4 mm

Notes

Utilization restriction

EMC note	EMC: class A product, see manufacturer's declaration in the download area
----------	---

Material specifications

Housing material	Polycarbonate fiber reinforced
------------------	--------------------------------

Mounting

Mounting type	DIN rail mounting
---------------	-------------------

Interfaces

Ethernet (RJ45)

Number of interfaces	16
Connection method	RJ45
Note on the connection method	Auto negotiation and autocrossing
Transmission speed	10/100 Mbps
Transmission physics	Ethernet in RJ45 twisted pair
Transmission length	100 m (per segment)
Signal LEDs	Data receive, link status
No. of channels	16 (RJ45 ports)

Product properties

Product type	Switch
MTTF	63.7 Years (MIL-HDBK-217F standard, temperature 25°C, operating cycle 100%)
	729 Years (SN 29500 standard, temperature 25°C, operating cycle 21%)
	639 Years (Telcordia standard, 25°C temperature, 21% operating cycle (5 days a week, 8 hours a day))

Switch functions

Basic functions	Unmanaged switch
	Autonegotiation
	Store and Forward switching mode
PROFINET conformance class	Conformance-Class A
MAC address table	8k

Industrial Ethernet Switch - FL SWITCH 1016N



1085255

<https://www.phoenixcontact.com/pc/products/1085255>

Status and diagnostic indicators	LEDs: U _S , link and activity per port
Additional functions	100 BASE-TX/100BASE-FX (IEEE 802.3u)
	Quality of Service (QoS) prioritization (IEEE 802.1p)
	Energy-efficient Ethernet (IEEE 802.3az)
	10Base-T (IEEE 802.3)

Security functions

Basic functions	Unmanaged switch
	Autonegotiation
	Store and Forward switching mode

Electrical properties

Transmission medium	Copper
---------------------	--------

Supply

Supply voltage	24 V
	24 V AC (50/60 Hz)
Supply voltage range	9 V DC ... 32 V DC
	18 V AC ... 30 V AC (50/60 Hz)
Power supply connection	Via COMBICON, max. conductor cross section 2.5 mm ²
Residual ripple	3.6 V _{PP} (within the permitted voltage range)
Max. current consumption	266 mA (at 9 V DC)
Typical current consumption	68 mA (at 24 V DC)

Connection data

Connection method	Push-in spring connection
Conductor cross section, rigid	0.2 mm ² ... 2.5 mm ²
Conductor cross section flexible, with ferrule without plastic sleeve	0.25 mm ² ... 2.5 mm ²
Stripping length	10 mm

Ambient conditions

Degree of protection	IP30
Ambient temperature (operation)	-10 °C ... 60 °C
Ambient temperature (storage/transport)	-40 °C ... 85 °C
Altitude	2000 m (maximum)
Permissible humidity (operation)	5 % ... 95 % (non-condensing)
Permissible humidity (storage/transport)	5 % ... 95 % (non-condensing)
Shock (operation)	30g (EN 60068-2-27)
Vibration (operation)	in acc. with IEC 60068-2-6: 5g, 150 Hz
Air pressure (operation)	79 kPa ... 108 kPa up to 2000 m above mean sea level (Without derating)
Air pressure (storage/transport)	79 kPa ... 108 kPa up to 2000 m above mean sea level (Without derating)

Approval data

Industrial Ethernet Switch - FL SWITCH 1016N



1085255

<https://www.phoenixcontact.com/pc/products/1085255>

Conformity/Approvals

Conformance	CE-compliant
UL, USA / Canada	UL 61010-1, UL 61010-2-201 Class I, Div. 2, Groups A, B, C, D, T4 Class I, Zone 2, Group IIC, T4

EMC data

Conformance with EMC directives	EN 61000-6-2 EN 61000-4-2 (ESD) Criterion B
	EN 61000-6-2 EN 61000-4-3 (electromagnetic fields) Criterion A
	EN 61000-6-2 EN 61000-4-4 (EFT burst) Criterion A
	EN 61000-6-2 EN 61000-4-5 (surge) Criterion B
	EN 61000-6-2 EN 61000-4-6 (line noise immunity) Criterion A
	EN 61000-6-2 EN 61000-4-8 (electromagnetic fields) Criterion A
	EN 61000-6-2 Class A
Electromagnetic compatibility	Conformance with EMC Directive 2014/30/EU
Noise emission	EN 61000-6-4:2007 + A1:2011
Noise immunity	EN 61000-6-2:2005

LED signaling

Status display	LEDs: U _S , link and activity per port
----------------	---


Industrial Ethernet Switch - FL SWITCH 1016N





1085255

<https://www.phoenixcontact.com/pc/products/1085255>

Approvals


 IECEE CB Scheme Approval ID: DK-91138-UL				
	Nominal Voltage U_N	Nominal Current I_N	Cross Section AWG	Cross Section mm^2
			-	-


 EAC Approval ID: RU *-DE.A*08.B.00731

 IECEE CB Scheme Approval ID: DK-91246-UL				
	Nominal Voltage U_N	Nominal Current I_N	Cross Section AWG	Cross Section mm^2
			-	-

 UL Listed Approval ID: FILE E 140403
--


 cUL Listed Approval ID: FILE E 140403

 KC Approval ID: R-R-PCK-1085255

 cUL Listed Approval ID: FILE E 238705

 UL Listed Approval ID: FILE E 238705
--

 cUL Listed Approval ID: FILE E 196811

 UL Listed Approval ID: FILE E 196811
--

cULus Listed

Industrial Ethernet Switch - FL SWITCH 1016N

1085255

<https://www.phoenixcontact.com/pc/products/1085255>



Industrial Ethernet Switch - FL SWITCH 1016N



1085255

<https://www.phoenixcontact.com/pc/products/1085255>

Classifications

ECLASS

ECLASS-9.0	19170106
ECLASS-10.0.1	19170402
ECLASS-11.0	19170402

ETIM

ETIM 8.0	EC000734
----------	----------

UNSPSC

UNSPSC 21.0	43222600
-------------	----------

Industrial Ethernet Switch - FL SWITCH 1016N



1085255

<https://www.phoenixcontact.com/pc/products/1085255>

Environmental Product Compliance

REACH SVHC

Lead 7439-92-1

1085255

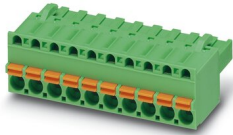
<https://www.phoenixcontact.com/pc/products/1085255>

Accessories

PCB connector

PCB connector - FKCT 2,5/ 3-ST KMGY BD:US,GND - 1087544

<https://www.phoenixcontact.com/pc/products/1087544>

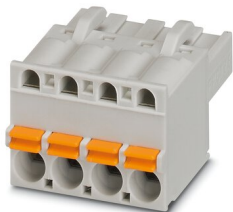


PCB connector, nominal cross section: 2.5 mm², color: light grey, nominal current: 12 A, rated voltage (III/2): 320 V, contact surface: Tin, type of contact: Female connector, number of rows: 1, number of positions: 3, product range: FKCT 2,5/..-ST, pitch: 5 mm, connection method: Push-in spring connection, conductor/PCB connection direction: 0 °, locking clip: - Locking clip, plug-in system: COMBICON MSTB 2,5, locking: without, mounting: without, type of packaging: packed in cardboard

PCB connector

PCB connector - FKCT 2,5/ 3-ST KMGY - 1998263

<https://www.phoenixcontact.com/pc/products/1998263>



PCB connector, nominal cross section: 2.5 mm², color: light grey, nominal current: 12 A, rated voltage (III/2): 320 V, contact surface: Tin, type of contact: Female connector, number of potentials: 3, number of rows: 1, number of positions: 3, number of connections: 3, product range: FKCT 2,5/..-ST, pitch: 5 mm, connection method: Push-in spring connection, conductor/PCB connection direction: 0 °, locking clip: - Locking clip, plug-in system: COMBICON MSTB 2,5, locking: without, mounting: without, type of packaging: packed in cardboard

Industrial Ethernet Switch - FL SWITCH 1016N

1085255

<https://www.phoenixcontact.com/pc/products/1085255>

Mounting plate

Mounting plate - FL PANEL ADAPTER 40 - 1085486

<https://www.phoenixcontact.com/pc/products/1085486>



The FL PANEL ADAPTER 40 is designed to allow products 40 mm wide to be mounted flush to a panel, in any orientation.

Mounting plate

Mounting plate - FL DIN-RAIL ADAPTER 40 - 1085484

<https://www.phoenixcontact.com/pc/products/1085484>



The FL DIN-RAIL ADAPTER 40 is designed to allow products 40 mm wide to be mounted flush to a standard 35 mm DIN rail, in any orientation.

Industrial Ethernet Switch - FL SWITCH 1016N



1085255

<https://www.phoenixcontact.com/pc/products/1085255>

Surge protection device

Surge protection device - DT-LAN-CAT.6+ - 2881007

<https://www.phoenixcontact.com/pc/products/2881007>



Surge protection in accordance with Class E_A (CAT6_A), for Gigabit Ethernet (up to 10 Gbps), token ring, FDDI/CDDI, ISDN, and DS1. Suitable for Power over Ethernet (PoE++ / 4PPoE) "Mode A" and "Mode B". RJ45 attachment plug with separate grounding cable and ground connection snap-on foot for NS 35 DIN rails.

Patch cable

Patch cable - FL CAT5 PATCH 0,5 - 2832263

<https://www.phoenixcontact.com/pc/products/2832263>



Patch cable, CAT5, assembled, 0.5 m

Industrial Ethernet Switch - FL SWITCH 1016N



1085255

<https://www.phoenixcontact.com/pc/products/1085255>

Patch cable

Patch cable - FL CAT5 PATCH 1,0 - 2832276

<https://www.phoenixcontact.com/pc/products/2832276>

Patch cable, CAT5, assembled, 1 m



Patch cable

Patch cable - FL CAT5 PATCH 2,0 - 2832289

<https://www.phoenixcontact.com/pc/products/2832289>

Patch cable, CAT5, assembled, 2 m



Industrial Ethernet Switch - FL SWITCH 1016N



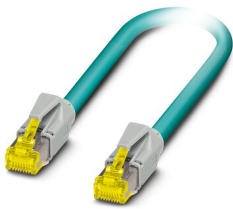
1085255

<https://www.phoenixcontact.com/pc/products/1085255>

Patch cable

Patch cable - NBC-R4AC-R4AC-IE8A/.../... - 1411854

<https://www.phoenixcontact.com/pc/products/1411854>

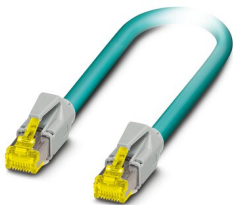


Patch cable, degree of protection: IP20, number of positions: 8, 10 Gbps, CAT6_A, cable outlet: straight, Ethernet

Patch cable

Patch cable - NBC-R4AC/10G-R4AC/10G-94F/2,0 - 1408360

<https://www.phoenixcontact.com/pc/products/1408360>



Patch cable, CAT6_A, 4-pair, shielded, connection not crossed (line), assembled at both ends with RJ45/IP20 connectors, outer sheath material: PUR, length: 2.0 m

Industrial Ethernet Switch - FL SWITCH 1016N



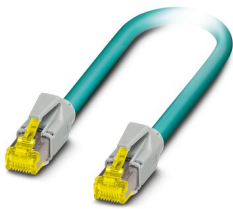
1085255

<https://www.phoenixcontact.com/pc/products/1085255>

Patch cable

Patch cable - NBC-R4AC/10G-R4AC/10G-94F/3,0 - 1408365

<https://www.phoenixcontact.com/pc/products/1408365>

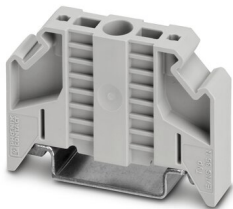


Patch cable, CAT6_A, 4-pair, shielded, connection not crossed (line), assembled at both ends with RJ45/IP20 connectors, outer sheath material: PUR, length: 3.0 m

End clamp

End clamp - E/NS 35 N - 0800886

<https://www.phoenixcontact.com/pc/products/0800886>



End clamp, width: 9.5 mm, color: gray

Industrial Ethernet Switch - FL SWITCH 1016N

1085255

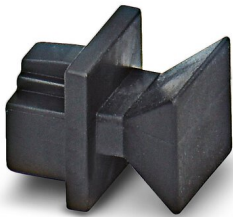
<https://www.phoenixcontact.com/pc/products/1085255>



Dust protection

Dust protection - FL RJ45 PROTECT CAP - 2832991

<https://www.phoenixcontact.com/pc/products/2832991>



Dust protection caps for RJ45 socket

Phoenix Contact 2022 © - all rights reserved

<https://www.phoenixcontact.com>

PHOENIX CONTACT GmbH & Co. KG

Flachsmarktstraße 8

D-32825 Blomberg

+49 (0) 5235-3 00

info@phoenixcontact.com