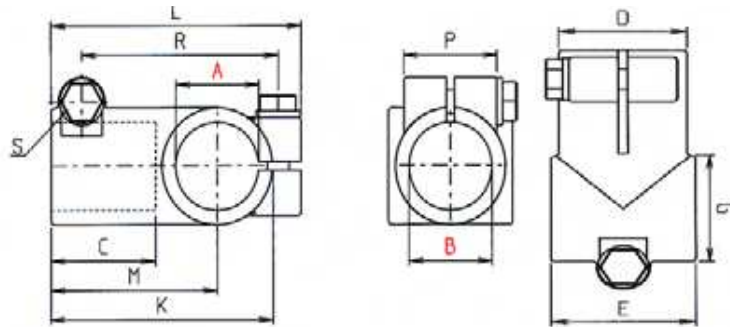


Industrial Clamps



W Angle Clamps



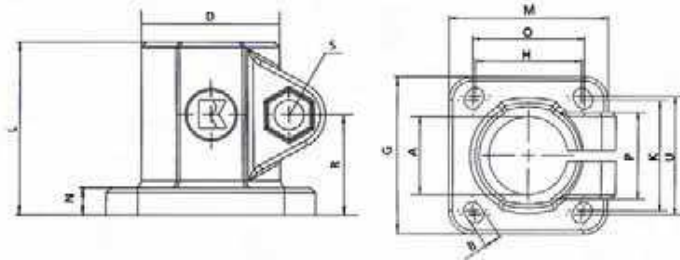
Code Number	Part Number	Type	Inches		Millimeters												m [g]
			A†	B†	C	D	E	G	K	L	M	P	R	S			
Inch clamps available in USA, Canada and Mexico only	RAA.0505	W	.500"	.500"	28	26	32	26	56	66	43	23	49	M6x20	97		
	RAA.0707	W	.750"	.750"	28	26	32	26	56	66	43	23	49	M6x20	75		
	RAA.1010	W	1.00"	1.00"	40	40	45	40	80	93	60	33	72.5	M8x25	240		
	RAA.1212	W	1.25"	1.25"	40	40	45	40	80	93	60	33	72.5	M8x25	192		
	RAA.1515	W	1.50"	1.50"	60	56	60	56	117	134	88	40	108	M10x30	623		
	RAA.2020	W	2.00"	2.00"	65	66	70	66	136	149	98	45	123	M10x35	710		

Dimensions in Millimeters

113 000 000	RAA.0030	W 30	30.10	30.10	40	40	45	40	80	93	60	33	72.5	M8x25	192
115 000 000	RAA.0050	W 50	50.22	50.22	65	66	70	66	136	149	98	45	123	M10x35	710

† = Tube Hole

FS Base Clamps



Code Number	Part Number	Type	Inches		Millimeters												m [g]
			A†	B†	D	G	H**	K**	L	M	N	O	P	R	S	U	
Inch clamps available in USA, Canada and Mexico only	RBC.0500	FS	.500"	.500"	25	42	30	30	37	42	5	-	23	21.0	M6x20	28	65
	RBC.0600	FS	.625"	.625"	25	42	30	30	37	42	5	-	23	21.0	M6x20	28	57
	RBC.0700	FS	.750"	.750"	25	42	30	30	37	42	5	-	23	31.0	M6x20	28	52
	RBC.1000	FS	1.00"	1.00"	40	60	40	45	50	60	8	42	33	29.0	M8x25	42	164
	RBC.1200	FS	1.25"	1.25"	40	60	40	45	50	60	8	42	33	29.0	M8x25	42	137
	RBC.1500	FS	1.50"	1.50"	56	90	60	60	70	90	10	64	40	40.0	M10x30	64	450
RBC.2000	FS	2.00"	2.00"	66	105	74	74	85	105	14	80	45	49.5	M10x35	80	603	

Dimensions in Millimeters

131 200 000	RBC.0012	FS 12	12.1	5.5	25	42	30	30	37	42	5	-	23	21	M6x20	28	65
131 400 000	RBC.0014	FS 14	14.1	5.5	25	42	30	30	37	42	5	-	23	21	M6x20	28	61
131 600 000	RBC.0016	FS 16	16.1	5.5	25	42	30	30	37	42	5	-	23	21	M6x20	28	57
131 800 000	RBC.0018	FS 18	18.1	5.5	25	42	30	30	37	42	5	-	23	21	M6x20	28	52
132 000 000	RBC.0020	FS 20	20.1	6.5	40	60	40	45	50	60	8	42	33	29	M8x25	42	186
132 500 000	RBC.0025	FS 25	25.1	6.5	40	60	40	45	50	60	8	42	33	29	M8x25	42	164
133 000 000	RBC.0030	FS 30	30.1	6.5	40	60	40	45	50	60	8	42	33	29	M8x25	42	137
133 500 000	RBC.0035	FS 35	35.17	8.5	56	90	60	60	70	90	10	64	40	40	M10x30	64	450
134 000 000	RBC.0040	FS 40	40.17	8.5	56	90	60	60	70	90	10	64	40	40	M10x30	64	385
135 000 000	RBC.0050	FS 50	50.22	10.50	66	105	74	74	85	105	14	80	45	49.5	M10x35	80	603
136 000 000	RBC.0060	FS 60	60.27	10.50	80	110	80	80	100	120	15	89	58	57.5	M12x45	89	935

† = Tube Hole

**Type 20-30, 40, 50, 60 with slotted hole