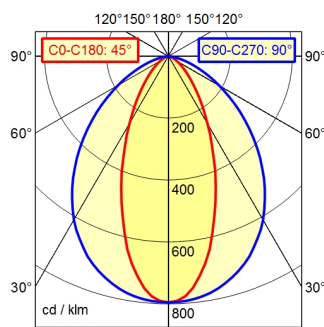




RSFM 4/0,05 P25-1

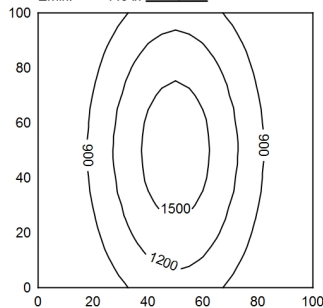
A60 | 100.0%

Φ: 2330 lm



100 x 100 cm Φ: 2330 lm

Em: 985 lx
Emax: 1640 lx
Emin: 445 lx



light source
work equipment
connected load
power consumption
luminous flux
luminous efficiency
light distribution
beam angle
colour temperature
colour temperatur
color rendering index (CRI)
chromaticity tolerance LED
glare control
luminance (L65)
unified glare rating (4H 8H)
system of protection
class of protection
technology
operation
housing
cover
mains lead
design
fastening
dimension
special features

LED
without
20-28V, DC
env. 21.5 W
approx. 2.330 lm
approx. 106 lm/W
direct, narrow-angled beam
40°/90°
neutral white
approx. 5.000 K
>= 80
< 4 SDCM
without
<= 56000 cd/m²
<= 22/31
IP 67
III
switchable
external
aluminium; anodised; aluminium coloured
anodised
screen, clear
built-in plug; RSFM 4/0,05 P25-1
mounted version
L-angle; clamp
A=715 mm
angle of illumination 40°