

## Data sheet

### W-DAT Line PoE Access Point 300 Mbit/s flush mounted without cover plug

Page 1/5

P/N

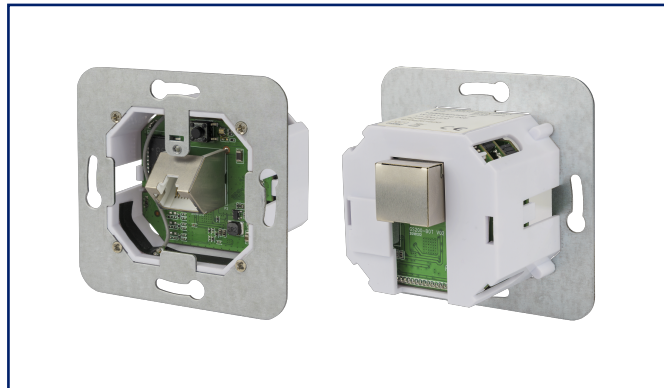
13005AP300-E

EAN 4251394630847

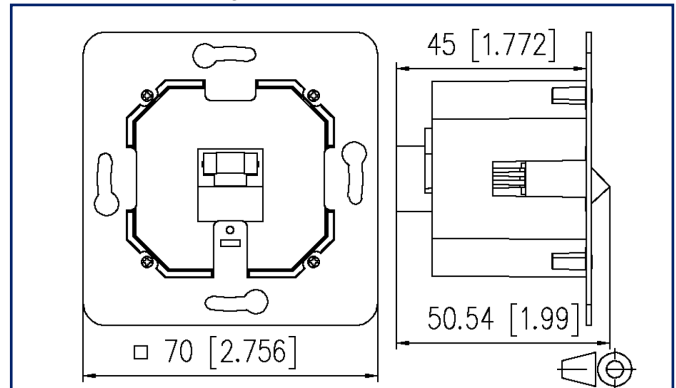
2023/08/01

Version: K

## Illustrations



Dimensional drawing



See enlarged drawings at the end of document

## Product specification

- for the planned new construction with simple installation of a UP0 access point in electronic flush-mounted socket
- with the included flat patch cord plug+play connection to a C6<sub>A</sub>modul 270°
- network infrastructure can be tested in advance
- 1x uplink port RJ45 (1000 Mbit/s) for connection to a PoE switch according to IEEE 802.3af
- 1x RJ45 port (1000 Mbit/s) for connection with network-connected end devices (laptop, PC, etc.)
- 1x WLAN function in the 2.4 GHz band (IEEE 802.11n/ max. 300 Mbit/s) for connection with end devices (laptop, smartphone, etc.)
- Reset key for reset to factory settings
- Router/DHCP server required
- runs as a DHCP client (plug+play solution)
- compatible with design-central units of switch lines
- reference list of possible flush-mounted sockets available online
- METZ CONNECT WLAN app for simple commissioning and configuration is available on Android and on iOS, free in the relevant store

## W-DAT Line PoE Access Point 300 Mbit/s flush mounted without cover plug

P/N  
13005AP300-E  
EAN 4251394630847  
2023/08/01  
Version: K

### Technical Data

#### General Data

Transmission rate	max. 300 Mbit/s
Frequency band	2.4 GHz
Managed	yes
Protocol	IEEE 802.11 b/g/n
Encoding	WPA2
Ethernet	yes
Number of ports 10/100/1000 Mbps LAN	1
Bridge function	yes
Power over Ethernet	yes
Color	Other
Dimensions	
Dimension (W x H x D)	70 mm x 70 mm x 50.54 mm
Dimension (W x H x D)	2.756 in. x 2.756 in. x 1.99 in.
Built-in	yes
Flush-mounted installation	yes
Power supply	IEEE 802.3af (PoE)

#### Connections/interfaces

Connector technology interface 1	RJ45-jack
Connector technology interface 2	RJ45-jack

#### Electrical characteristics

Power consumption (max.)	5.5 W
Power consumption	Power consumption at an average transmission rate of 25 Mbit/s and 10 mW RF output power: 3.5 W typical Power consumption at an average transmission rate of 25 Mbit/s and 100 mW RF output power: 4.5 W typical

#### Environmental conditions

Temperature (min. - max.)	
Temperature - Operating °C	0 °C - 40 °C
Temperature - Operating °F	32 °F - 104 °F

# P | Cabling

Data sheet

Page 3/5

## W-DAT Line PoE Access Point 300 Mbit/s flush mounted without cover plug

P/N

13005AP300-E

EAN 4251394630847

2023/08/01

Version: K

### Technical Data

#### Environmental conditions

Temperature (min. - max.)

Temperature - Storage °C -25 °C - 70 °C

Temperature - Storage °F -13 °F - 158 °F

#### Classifications

ETIM 5.0 EC000816

ETIM 6.0 EC000816

ETIM 7.0 EC000816

ETIM 8.0 EC000816

ETIM 9.0 EC000816

#### General information

Service

Service requests are answered from Monday to Friday during regular business hours.

Service W-DAT Line  
Phone +49 7702 533-159  
servicewdat@metz-connect.com

# P | Cabling

Data sheet

Page 4/5

## W-DAT Line PoE Access Point 300 Mbit/s flush mounted without cover plug

P/N

13005AP300-E

EAN 4251394630847

2023/08/01

Version: K

### Accessories

P/N	Designation
13005SG4P1E1S-E	W-DAT Line EPOS G-4P1E1S, 4 x PoE, 1 x Uplink RJ45, 1 x Uplink SFP
13005SG8P2E-E	W-DAT Line EPOS G-8P2E, 8 x PoE, 2 x Uplink RJ45
13005SG8P2S-E	W-DAT Line EPOS G-8P2S, 8 x PoE, 2 x Uplink SFP
130B12-DNV	C6 <sub>A</sub> modul 270° jack DNV
130B12-E	C6 <sub>A</sub> modul 270° jack
816718-0101-I	Cover plate 80 x 80 mm pearl white, E-DAT C6
816718-0102-I	Cover plate 80 x 80 mm pure white, E-DAT C6
816718-0127-I	Cover plate 80 x 80 mm, traffic white, E-DAT C6
820466-0102-I	Cover plate 80.5 x 151.5 mm 2-fold pearl white, E-DAT C6
860056-02-I	Central plate 50 x 50 mm 1 port, pure white, E-DAT C6
860056-27-I	Central plate 50 x 50 mm 1 port, traffic white, E-DAT C6
860056-I	Central plate 50 x 50 mm 1 port, pearl white, E-DAT C6

# P | Cabling

Data sheet

Page 5/5

## W-DAT Line PoE Access Point 300 Mbit/s flush mounted without cover plug

P/N

13005AP300-E

EAN 4251394630847

2023/08/01

Version: K

### Illustrations

Dimensional drawing

