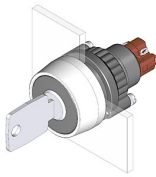


# EAO – Your Expert Partner for Human Machine Interfaces

## 14-141.025K2 - Keylock switch actuator 2 positions

### 14-141.025K2 - Keylock switch actuator 2 positions



*Attention: The preview is based on a sample product. This can differ from your current configuration.*

#### Mounting

Mounting cut-out Design  $\varnothing$  22,3 mm raised

#### Front

Front shape round  
Front dimension  $\varnothing$  29 mm  
Front bezel colour natural anodized  
Front bezel material Aluminium

#### Other Attributes

Weight 0,029 kg

#### Operating-/Indication part

Switching angle 42° right

#### IP-Rating

Front protection IP65

#### Connection Method

Terminal Solder

#### Actuator

Switching action Rest(a) - Momentary

#### Switching element

Rotary positions 2  
Switching system Snap-action switching element  
Switching current 5 A  
Contacts 1 NC + 1 NO  
Contact material  
Switching voltage 250 V AC

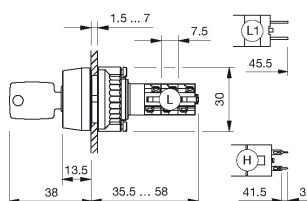
#### Function

Keylock switch

# EAO – Your Expert Partner for Human Machine Interfaces

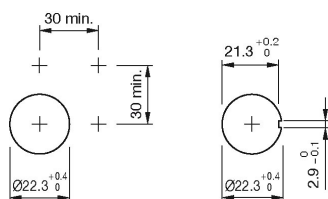
## 14-141.025K2 - Keylock switch actuator 2 positions

### Dimensions

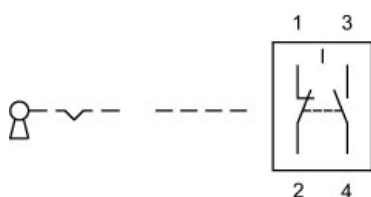


L = Solder terminal

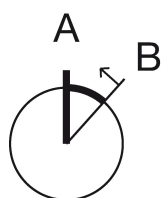
### Mounting cut-outs



### Wiring diagram



### Switching positions



### Additional information

Lock numbers 1001, lock type KABA

Two keys are supplied with each keylock switch.

Optional lock numbers on request

The colour of anodized aluminium parts can vary due to technical production reasons

### Legend

Contacts: NC = Normally closed, NO = Normally open

Switching action: A = Rest, B = Momentary