

ACT20M-RTI-CO-EOLP-S**Weidmüller Interfaces GmbH & Co. KG**

Postfach 3030

32760 Detmold

Tel. +49 5231 14-0

Fax. +49 5231 14-2083

info@weidmueller.com

www.weidmueller.com

Product image**ACT20M: The slim solution**

- Safe and space-saving (6 mm) isolation and conversion
- Quick installation of the power supply unit using the CH20M mounting rail bus
- Easy configuration via DIP switch or FDT/DTM software
- Extensive approvals such as ATEX, IECEX, GL, DNV
- High interference resistance

General ordering data

Version	Passive isolator, Without galvanic isolation, Input : Temperature, PT100, Output : 4-20 mA
Order No.	1435610000
Type	ACT20M-RTI-CO-EOLP-S
GTIN (EAN)	4050118240528
Qty.	1 pc(s).

ACT20M-RTI-CO-EOLP-S

Weidmüller Interfaces GmbH & Co. KG

Postfach 3030

32760 Detmold

Tel. +49 5231 14-0

Fax. +49 5231 14-2083

info@weidmueller.com

www.weidmueller.com

Technical data

Dimensions and weights

Depth	114.3 mm	Depth (inches)	4.5 inch
Height	112.5 mm	Height (inches)	4.429 inch
Width	6.1 mm	Width (inches)	0.24 inch
Net weight	80 g		

Temperatures

Storage temperature	-40 °C...85 °C	Humidity	40 °C / 93 % rel. humidity, no condensation
---------------------	----------------	----------	--

Probability of failure

SIL in compliance with IEC 61508	None	MTBF	227 Years
----------------------------------	------	------	-----------

Input

Influence of the sensor cable resistance	< 0.002 Ω/Ω	Input measurement range	PT100 -200...+850 °C
Line resistance in measuring circuit	50 Ω @ RTD (Pt100), 10 kΩ @ TC (J, K)	Number of inputs	1
Sensor	PT100 (2-/3-/4- wire)	Temperature input range	Configurable, PT100: -200...+850 °C, min. measurement range 10 °C (RTD)

Output

Load impedance current	≤ 600 Ω	Number of outputs	1
Output current	4...20 mA, loop-powered	Supply voltage (output)	16,8 V...31,2 V
Type	passive, connected control must be active	Wire break detection	Yes, Configurable, 3.5 mA / 23 mA / none
load impedance voltage	≥ 10 kΩ		

General data

Accuracy	absolute accuracy: < ±0.1 % of the measurement range, Basic accuracy: < ±0.2 °C	
Cold-junction compensation error	±(2.0 °C + 0.4 °C x Δt) Δt = inside temperature - ambient temperature	
Configuration	DIP switch	
Delivery state	Output: 4...20 mA (loop) // Sensor error detection: enabled // Output error level: downscale // Noise suppression: 50 Hz // Step response time: < 30 ms // Start temperature: -200 °C // End temperature: 0 °C	
Delivery state	Setting parameters	Output
	Configuration	4...20 mA (loop)
	Setting parameters	Sensor error detection
	Configuration	enabled
	Setting parameters	Output error level
	Configuration	downscale
	Setting parameters	Noise suppression
	Configuration	50 Hz
	Setting parameters	Step response time
	Configuration	< 30 ms
Galvanic isolation	Setting parameters	Start temperature
	Configuration	-200 °C
	Setting parameters	End temperature
	Configuration	0 °C
Long-term drift	Without isolation 0	

Creation date February 21, 2023 2:26:19 PM CET

Catalogue status 18.02.2023 / We reserve the right to make technical changes.

ACT20M-RTI-CO-EOLP-S

Weidmüller Interfaces GmbH & Co. KG

Postfach 3030

32760 Detmold

Tel. +49 5231 14-0

Fax. +49 5231 14-2083

info@weidmueller.com

www.weidmueller.com

Technical data

Power consumption, max.	0.8 W	
Power consumption, typ.	0.48 W	
Rail	TS 35	
Step response time	Configurable, ≤ 30 ms, < 300 ms	www.weidmueller.com
Temperature coefficient	RTD (PT100) ≤ 0.01 % of the measurement range/°C or 0.02 °C/°C	
Type of connection	Screw connection	
Voltage supply	Output loop powered, 6...35 V	

Insulation coordination

EMC standards	IEC 61326-1, NE 21	Galvanic isolation	Without isolation
Pollution severity	2		

Data for Ex applications (ATEX)

Installation location	Device installed in safe area, zone 2	Marking	II 3 G Ex nA IIC T4 Gc
-----------------------	---------------------------------------	---------	------------------------

Connection data

Type of connection	Screw connection	Tightening torque, min.	0.4 Nm
Tightening torque, max.	0.6 Nm	Clamping range, rated connection	2.5 mm ²
Clamping range, min.	0.5 mm ²	Clamping range, max.	2.5 mm ²
Wire connection cross section AWG, min.	AWG 30	Wire connection cross section AWG, max.	AWG 14

EMC conformity and approvals

EMC standards	IEC 61326-1, NE 21	Standards	IEC 61010-1
---------------	--------------------	-----------	-------------

Classifications

ETIM 6.0	EC002919	ETIM 7.0	EC002919
ETIM 8.0	EC002919	ECLASS 9.0	27-21-01-29
ECLASS 9.1	27-21-01-29	ECLASS 10.0	27-21-01-29
ECLASS 11.0	27-21-01-29	ECLASS 12.0	27-21-01-29

Environmental Product Compliance

REACH SVHC	Lead 7439-92-1
SCIP	2f6dd957-421a-46db-a0c2-cf1609156924

Important note

Product information	<p>The ACT20M-RTCI-CO-OLP-S passive configurable temperature transducer isolates and converts analogue signals. An analogue RTD (Type Pt100) or TC (Type J, K) input signal is linearly converted into an analogue output signal and galvanically isolated. Power is supplied through the output measurement circuit (output-loop powered).</p> <p>The ACT20M-RTI-CO-EOLP-S passive configurable temperature transducer does not have any galvanic isolation and has no TC input.</p>
---------------------	---

ACT20M-RTI-CO-EOLP-S

Weidmüller Interfaces GmbH & Co. KG

Postfach 3030

32760 Detmold

Tel. +49 5231 14-0

Fax. +49 5231 14-2083

info@weidmueller.com

Technical data

Approvals

Approvals



ROHS	Conform
UL File Number Search	UL Website
Certificate no. (cULus)	E337701

Downloads

Approval/Certificate/Document of Conformity	DNV-GL certificate FM certificate IECEX certificate ATEX certificate Declaration of Conformity
Engineering Data	CAD data – STEP
Engineering Data	WSCAD
Software	Runtime Software – DIP switch configuration tool
User Documentation	instruction sheet
Catalogues	Catalogues in PDF-format
Brochures	

ACT20M-RTI-CO-EOLP-S

Weidmüller Interfaces GmbH & Co. KG

Postfach 3030

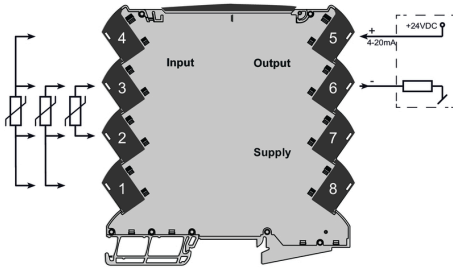
32760 Detmold

Tel. +49 5231 14-0

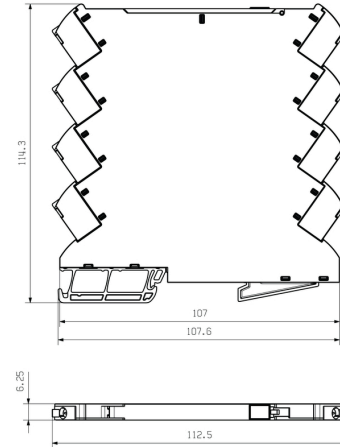
Fax. +49 5231 14-2083

Drawings

Connection diagram



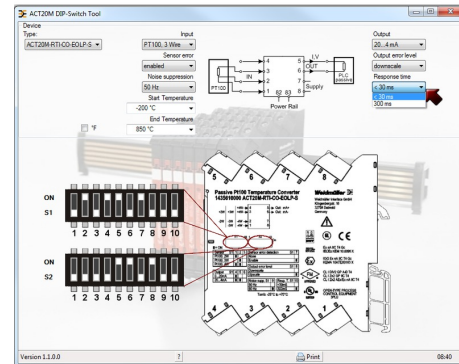
Dimensional drawing info@weidmueller.com



DIP switch setting

	S1	Temperature range [°C]				PT100: -200...+850 °C			
		Min.	S2	Max.	S2	Min.	S2	Max.	S2
RTI & TC sensor type	1/200								
P1100-2 wire	1								
P1100-3 wire	1								
P1100-4 wire	1								
Output	1/150								
4...20 mA	1								
20...4 mA	1								
Sensor error detection	7								
none	1								
enabled	1								
Output error level	3								
dynamic	1								
static	1								
Noise suppression	3								
50 Hz	1								
60 Hz	1								
Response time	1/8								
4...20 ms	1								
500 ms	1								

example for DIP switch setting (with ACT20M tool software)



example for DIP switch setting (with ACT20M tool software)