

D-Sub

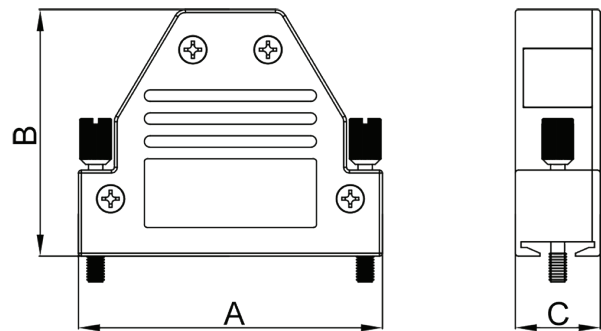
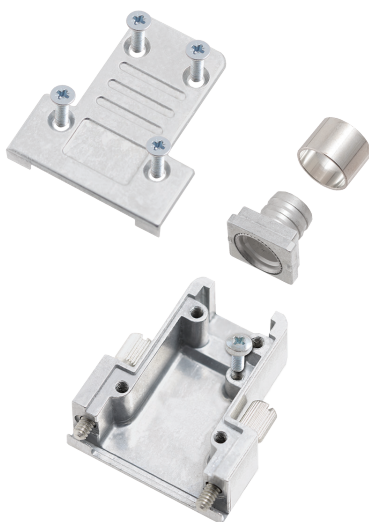
TECHNICAL SPECIFICATIONS

Material: Zinc, Nickel Plated
 Operating Temperature: -25°C to +90°C
 Cable Entry: 9-way: Top Entry
 15-way: Top Entry
 25-way: Side-Top-Side Entry
 Cable O.D.:
 Jackscrews: UNC 4-40



Features:

- Available in sizes 9-15-25-37-50
- Excellent EMI Shielding
- Re-openable
- Ferrules are sold separately



Size DCRP	Dim A	Dim B	Dim C
9-way	32,0	38,0	14,8
15-way	40,0	35,0	14,8
25-way	53,0	43,0	14,8
37-way	70,0	43,0	14,8
50-way	67,5	43,0	17,4

Ordering information:

Size:	P/N - Kitted:	Product Code:
9-way	1520-0301-01	DCRP09-K
15-way	1520-0301-02	DCRP15-K
25-way	1520-0301-03	DCRP25-K
37-way	1520-0301-04	DCRP37-K
50-way	1520-0301-05	DCRP50-K



TECHNICAL SPECIFICATIONS

Material: Zinc Body + Hard Brass, Nickel Plated

Operating Temperature: -40°C to +120°C



Ordering information:

Name:	P/N :	Product Code:	Info:
Crimp Flange	1599-0010-01	CF 9-37	3,0 - 4,0 mm
Crimp Flange	1599-0010-02	CF 9-37	3,5 - 4,5 mm
Crimp Flange	1599-0010-03	CF 9-37	4,0 - 5,0 mm
Crimp Flange	1599-0010-04	CF 9-37	4,5 - 5,5 mm
Crimp Flange	1599-0010-05	CF 9-37	5,0 - 6,0 mm
Crimp Flange	1599-0010-06	CF 9-37	5,5 - 6,5 mm
Crimp Flange	1599-0010-07	CF 9-37	6,0 - 7,0 mm
Crimp Flange	1599-0010-08	CF 9-37	6,5 - 7,5 mm
Crimp Flange	1599-0010-09	CF 9-37	7,0 - 8,0 mm
Crimp Flange	1599-0010-10	CF 9-37	7,6 - 8,5 mm
Crimp Flange	1599-0010-11	CF 9-37	8,0 - 9,0 mm
Crimp Flange	1599-0010-12	CF 9-37	8,5 - 9,5 mm
Crimp Flange	1599-0010-13	CF 9-37	9,0 - 10,0 mm

Name:	P/N :	Product Code:	Info:
Crimp Flange	1599-0010-23	CF 50	4,0 - 5,0 mm
Crimp Flange	1599-0010-24	CF 50	4,5 - 5,5 mm
Crimp Flange	1599-0010-25	CF 50	5,0 - 6,0 mm
Crimp Flange	1599-0010-26	CF 50	5,5 - 6,5 mm
Crimp Flange	1599-0010-27	CF 50	6,0 - 7,0 mm
Crimp Flange	1599-0010-28	CF 50	6,5 - 7,5 mm
Crimp Flange	1599-0010-29	CF 50	7,0 - 8,0 mm
Crimp Flange	1599-0010-30	CF 50	7,6 - 8,5 mm
Crimp Flange	1599-0010-31	CF 50	8,0 - 9,0 mm
Crimp Flange	1599-0010-32	CF 50	8,5 - 9,5 mm
Crimp Flange	1599-0010-33	CF 50	9,0 - 10,0 mm
Crimp Flange	1599-0010-34	CF 50	9,5 - 10,5 mm
Crimp Flange	1599-0010-35	CF 50	10,0 - 11,0 mm
Crimp Flange	1599-0010-36	CF 50	10,5 - 11,5 mm
Crimp Flange	1599-0010-37	CF 50	11,0 - 12,0 mm



TECHNICAL SPECIFICATIONS

Material: Brass, Nickel Plated

Operating Temperature: -40°C to +120°C



Ordering information:

Name:	P/N :	Product Code:	Info:
Crimp Sleeve	1599-0011-01	CS 9-50	5,0 - 6,0 mm
Crimp Sleeve	1599-0011-02	CS 9-50	5,5 - 6,5 mm
Crimp Sleeve	1599-0011-03	CS 9-50	6,0 - 7,0 mm
Crimp Sleeve	1599-0011-04	CS 9-50	6,5 - 7,5 mm
Crimp Sleeve	1599-0011-05	CS 9-50	7,0 - 8,0 mm
Crimp Sleeve	1599-0011-06	CS 9-50	7,5 - 8,5 mm
Crimp Sleeve	1599-0011-07	CS 9-50	8,0 - 9,0 mm
Crimp Sleeve	1599-0011-08	CS 9-50	8,5 - 9,5 mm
Crimp Sleeve	1599-0011-09	CS 9-50	9,0 - 10,0 mm
Crimp Sleeve	1599-0011-10	CS 9-50	9,5 - 10,5 mm
Crimp Sleeve	1599-0011-11	CS 9-50	10,0 - 11,0 mm
Crimp Sleeve	1599-0011-12	CS 9-50	10,5 - 11,5 mm
Crimp Sleeve	1599-0011-13	CS 9-50	11,0 - 12,0 mm
Crimp Sleeve	1599-0011-14	CS 9-50	11,5 - 12,5 mm
Crimp Sleeve	1599-0011-15	CS 9-50	12,0 - 13,0 mm
Crimp Sleeve	1599-0011-16	CS 9-50	12,5 - 13,5 mm
Crimp Sleeve	1599-0011-17	CS 9-50	13,0 - 14,0 mm
Crimp Sleeve	1599-0011-18	CS 9-50	13,7 - 15,0 mm
Crimp Sleeve	1599-0011-19	CS 9-50	14,0 - 15,0 mm
Crimp Sleeve	1599-0011-20	CS 9-50	14,5 - 15,5 mm
Crimp Sleeve	1599-0011-21	CS 9-50	16,0 - 17,0 mm