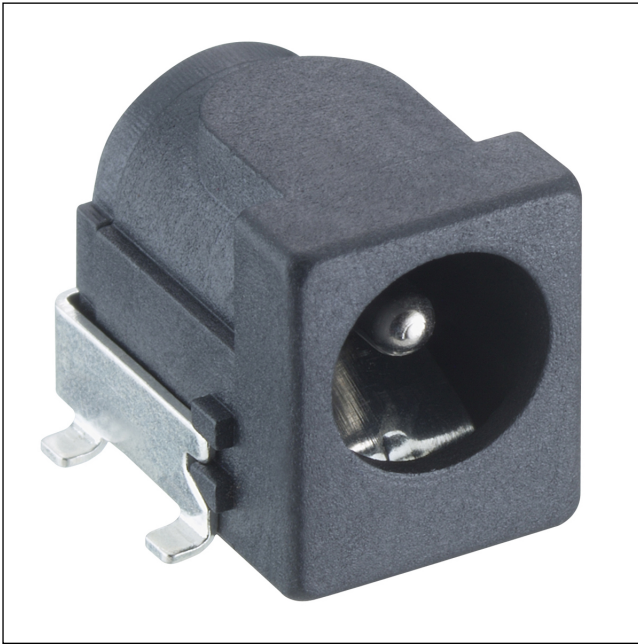


16

1613 30

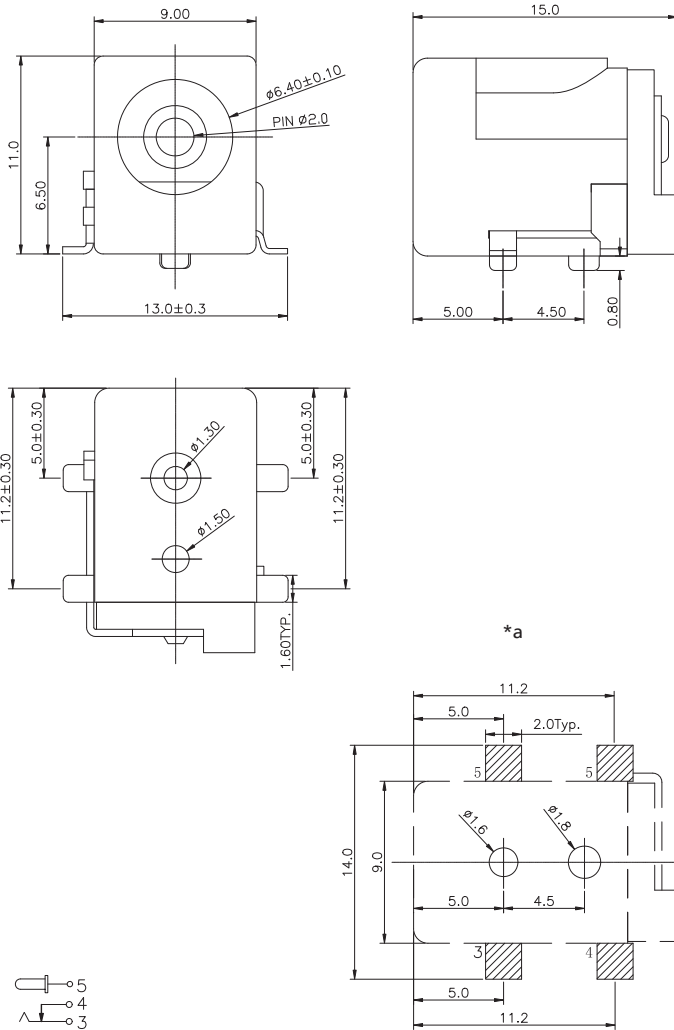
Power supply connectors



Power supply chassis socket, angular version, with break contact, for printed circuit boards, surface mounting technology (SMT)

16

1613 30



Environmental conditions

Temperature range -25 °C/+85 °C

Materials

Insulating body PA, V-0 according to UL94
Contact CuZn/CuSn, silver-plated/nickel-plated

Mechanical data

Diameter opening 6,5 mm
Diameter center pin 2,0 mm
Mating cycles 5000
Insertion force 3–30 N¹
Withdrawal force 3–30 N¹

¹ measured with a gauge plug

Electrical data (at T_{amb} 20 °C)

Contact resistance ≤ 30 mΩ
Rated current 3 A
Rated voltage 24 V
Rated impulse voltage 500 V/60 s
Insulation resistance ≥ 100 MΩ

Associated products

Counterparts
 ☞ 1633 02 ☞ 1633 03 ☞ NES/J 21
 ☞ NES/J 21 W ☞ NES/J 210 ☞ XNES/J 210

*a printed circuit board layout, components side view

16

1613 30

Designation	Pole Number	PU (Pieces)	MDQ (Pieces)
1613 30 VP3	2	250	250

Packaging:

on reel