

## Fixing frame - EV-T2SF-EM - 1627637

Please be informed that the data shown in this PDF Document is generated from our Online Catalog. Please find the complete data in the user's documentation. Our General Terms of Use for Downloads are valid (<http://phoenixcontact.com/download>)




Fixing frame for Infrastructure Socket Outlet, Type 2, IEC 62196-2, Thread: M5 (supplied as standard)

### Product Description

Fixing frame for Infrastructure Socket Outlet

### Key Commercial Data

Packing unit	1
GTIN	 4 055626 346106
GTIN	4055626346106
Custom tariff number	85389099

### Technical data

#### Product definition

Product type	Fixing frame for Infrastructure Socket Outlet
Type	Front hinged cover screw connection
Standards/regulations	IEC 62196-2
Charging standard	Type 2
Charging mode	Mode 3, Case B
Type of charging current	AC

#### Dimensions

Height	77.4 mm
Width	77.2 mm
Depth	11.5 mm
Bore dimensions	60 mm x 60 mm

# Fixing frame - EV-T2SF-EM - 1627637

## Technical data

### Ambient conditions

Ambient temperature (operation)	-30 °C ... 50 °C
Ambient temperature (storage/transport)	-40 °C ... 80 °C

### Mounting

Possible mounting positions	Front mounting, screwed on the front
Mounting hole diameter	< 7.00 mm (Elongated hole, for spacing see hole pattern)
Required mounting screws	M5 (supplied as standard)

### Design

Design line	Easy Mount
Housing color	black
Customer variations	On request

### Material

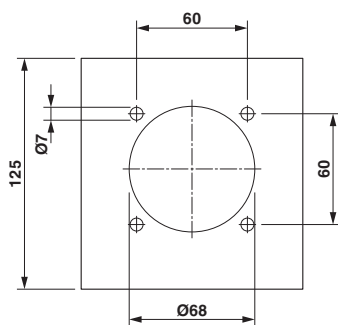
Material	Plastic
----------	---------

### Environmental Product Compliance

China RoHS	Environmentally friendly use period: unlimited = EFUP-e
	No hazardous substances above threshold values

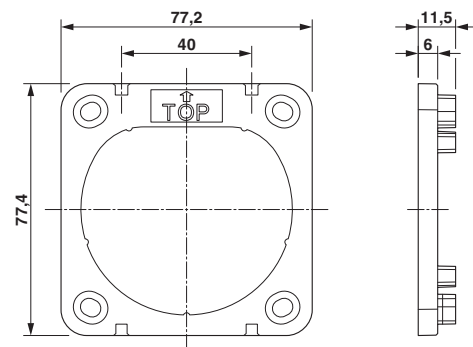
## Drawings

Dimensional drawing



Hole image

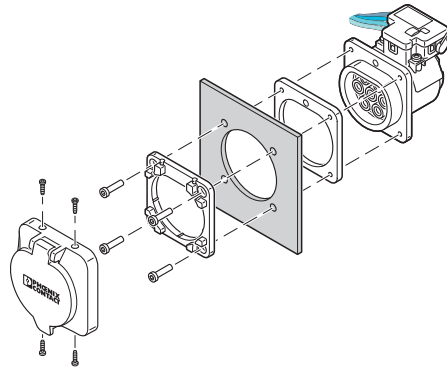
Dimensional drawing



Dimensional drawing

## Fixing frame - EV-T2SF-EM - 1627637

Schematic diagram



Rear mounting with front hinged cover screw connection

The screw connection for a hinged cover (EV-T2SC-EM) from the accessories range only supports front mounting with a corresponding fixing frame (EV-T2SF-EM). The panel thickness must not exceed 5 mm. The sealing frame that is slid on from the rear must contact the housing wall flush with the flat side and must completely surround the Infrastructure Socket Outlet.

### Classifications

#### eCl@ss

eCl@ss 4.0	272607xx
eCl@ss 4.1	27260701
eCl@ss 5.0	27260701
eCl@ss 5.1	27059110
eCl@ss 6.0	27279220
eCl@ss 7.0	27061801
eCl@ss 8.0	27059290
eCl@ss 9.0	27144792

#### ETIM

ETIM 2.0	EC000241
ETIM 3.0	EC002061
ETIM 4.0	EC002061
ETIM 5.0	EC002839
ETIM 6.0	EC002839

#### UNSPSC

UNSPSC 6.01	30211923
UNSPSC 7.0901	39121522
UNSPSC 11	39121522
UNSPSC 12.01	39121522
UNSPSC 13.2	39121522

## Fixing frame - EV-T2SF-EM - 1627637

### Accessories

#### Accessories

#### Infrastructure socket outlet

##### Socket Outlet - EV-T2M3SE12-3AC32A-0,7M6,0E14 - 1627693



Infrastructure Socket Outlet for charging electric vehicles with alternating current (AC), compatible with Infrastructure Plugs, Type 2, IEC 62196-2, 32 A / 480 V (AC), 12 V Locking actuator, Single wires, Length: 0.7 m, Screw connection of a hinged cover: Only possible on the front, Optimized insertion and withdrawal forces

---

##### Socket Outlet - EV-T2M3SE12-3AC32A-0,7M6,0E12 - 1627633



Infrastructure Socket Outlet for charging electric vehicles with alternating current (AC), compatible with Infrastructure Plugs, Type 2, IEC 62196-2, 32 A / 480 V (AC), 12 V Locking actuator, Single wires, Length: 0.7 m, Screw connection of a hinged cover: Only possible on the front

---

#### Protective cover

##### Protective covers - EV-T2SC-EM - 1627635



Self-closing hinged cover for Infrastructure Socket Outlet, Type 2, IEC 62196-2, Thread: Torx screw 30 x 12 (supplied as standard)