

1

2

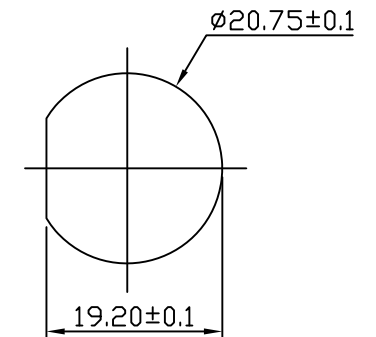
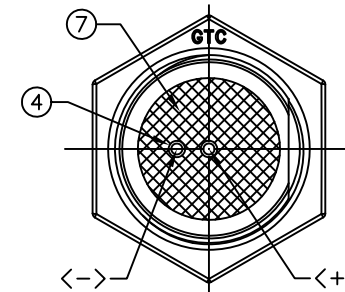
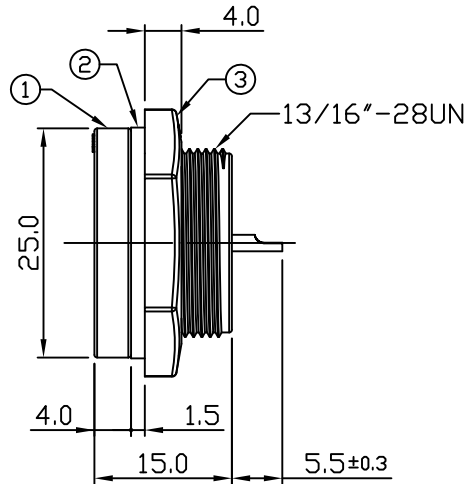
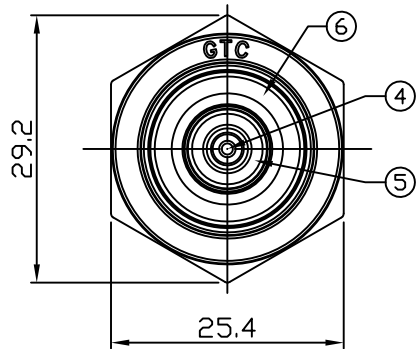
3

4

Notes: (Unless Otherwise Specified)

- 1. Waterproof Rate : IP67
- 2. Recommend Panel Thickness: 0.8 To 4.0 mm.
- 3. Recommend Torque: 14~15 Kgf-cm.
- 4. DWV: 500 Vrms
- 5. Rated Voltage: 30V AC/DC
- 6. Insulation Resistance: 100 MΩ MIN.
- 7. RoHS Compliant.

| REV | ECN# | DESCRIPTION OF REVISION | DRAW BY DATE | CHECK BY DATE | APPROVE BY DATE |
|-----|------|-------------------------|------------------|-------------------|-----------------|
| 01 | | PRELIMINARY | Hank 12/13/17 | Lucas 12/13/17 | Ray 12/13/17 |



Recommend Panel Cut-Out

| Item | Part Name | Material / Finish | Q'ty |
|------|--------------|-----------------------------------|------|
| 7 | Glue | Epoxy Color: Black | |
| 6 | Metal Ring | SUS430 Finish: - | 1 |
| 5 | Contact Ring | Copper Alloy Finish: Au Plated | 1 |
| 4 | Contacts | Copper Alloy Finish: Au Plated | 2 |
| 3 | Hex Nut | Thermoplastic Color: Black | 1 |
| 2 | Gasket | Silicone Color: Black | 1 |
| 1 | Housing | Thermoplastic Color: Black | 1 |

| TITLE | | | | | | Mating Part: 176-0896 | | REV. 01 | |
|--|------|-------|---------------|----------------|----------------|-------------------------|-----------------------------|---------|-------|
| Magnetic 5A 2 Contacts rotating 360 degrees Panel Solder | | | | | | | | | |
| | B | 1:1 | Hank 12/13/17 | Lucas 12/13/17 | Ray 12/13/17 | X.X ± 0.5 X.XX ± 0.2 | X.XXX ± 0.05 ANGLES ± 1° | mm | 1/1 |
| THIRD ANGLE PROJECTION | SIZE | SCALE | DRAW / DATE | CHECK / DATE | APPROVE / DATE | TOLERANCES | | UNIT | SHEET |

Part No.
176-0897

1

2

3

4